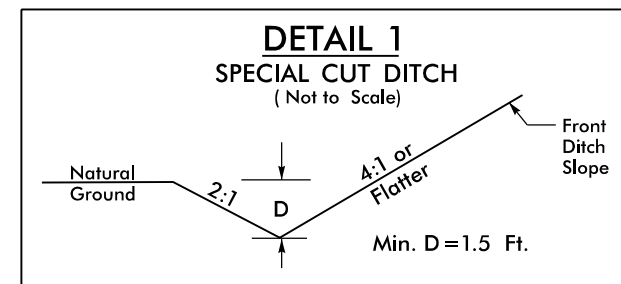
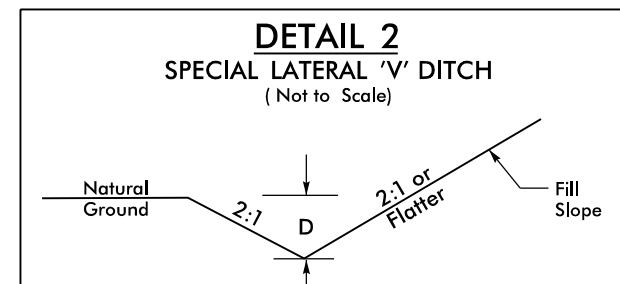


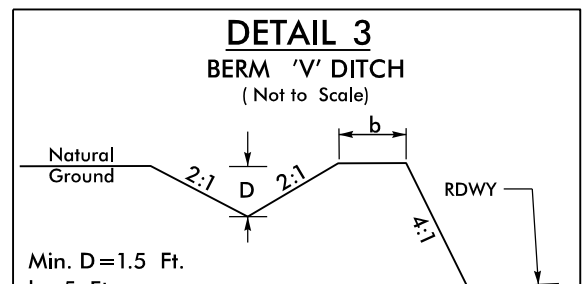
PROJECT REFERENCE NO. R-5725	SHEET NO. 4
ROADWAY DESIGN 5/3/2023 ENGINEER	HYDRAULICS 5/4/2023 ENGINEER
DOCUMENT NOT CONSIDERED FINAL UNLESS ALL SIGNATURES COMPLETED	



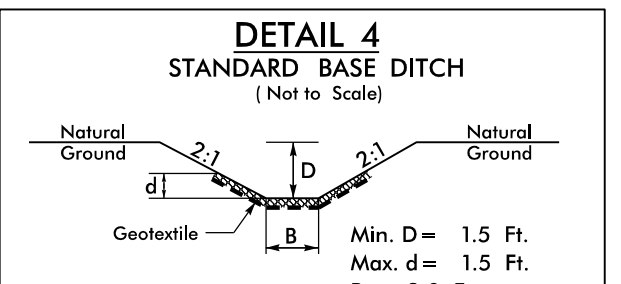
FROM STA. 11+28 TO STA. 13+00 -LI- RT
FROM STA. 12+50 TO STA. 17+00 -LI- LT
FROM STA. 18+00 TO STA. 18+39 -LI- RT



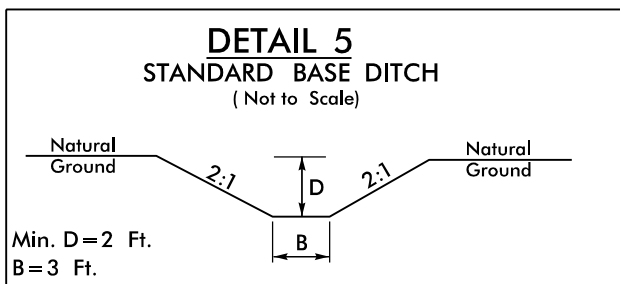
FROM STA. 17+00 TO STA. 18+32 -LI- LT
FROM STA. 18+39 TO STA. 18+50 -LI- RT



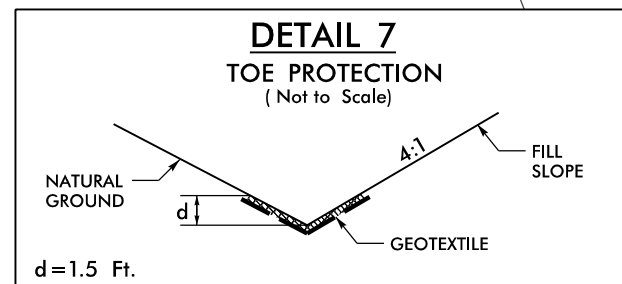
FROM STA. 17+25 TO STA. 18+39 -LI- RT



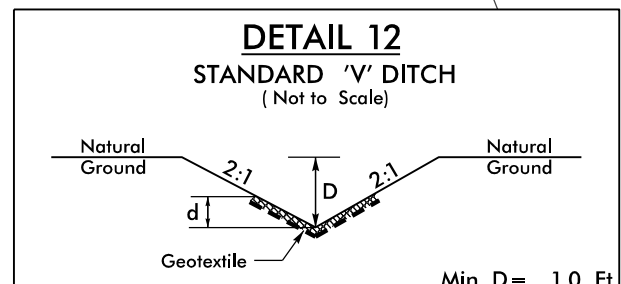
FROM STA. 18+27 TO 18+39 -LI- RT
Type of Liner = Class B Rip Rap



FROM STA. 17+94 TO STA. 18+32 -LI- LT
Type of Liner = Class B Rip Rap



FROM STA. 18+50 TO STA. 20+00 -LI- RT
Type of Liner = Class B Rip Rap



FROM STA. 18+31 TO STA. 18+64 -LI- LT
Type of Liner = Class B Rip Rap

-LI-
PI Sta 13+11.43
 $\Delta = 0^{\circ} 29' 23.8''$ (LT)
 $D = 0^{\circ} 04' 43.2''$
 $L = 622.85'$
 $T = 311.43'$
 $R = 72,838.42'$
 $S_e = NC$
Runoff = 60'

A. P. STAFFORD & PAULINE STAFFORD
DB 1364 PG 418
PB 14 PG 30

1
A. P. STAFFORD & PAULINE STAFFORD
DB 1175 PG 638
PB 14 PG 30

2
DAVID F. LINVILLE
DB 7089 PG 540
PB 28 PG 3

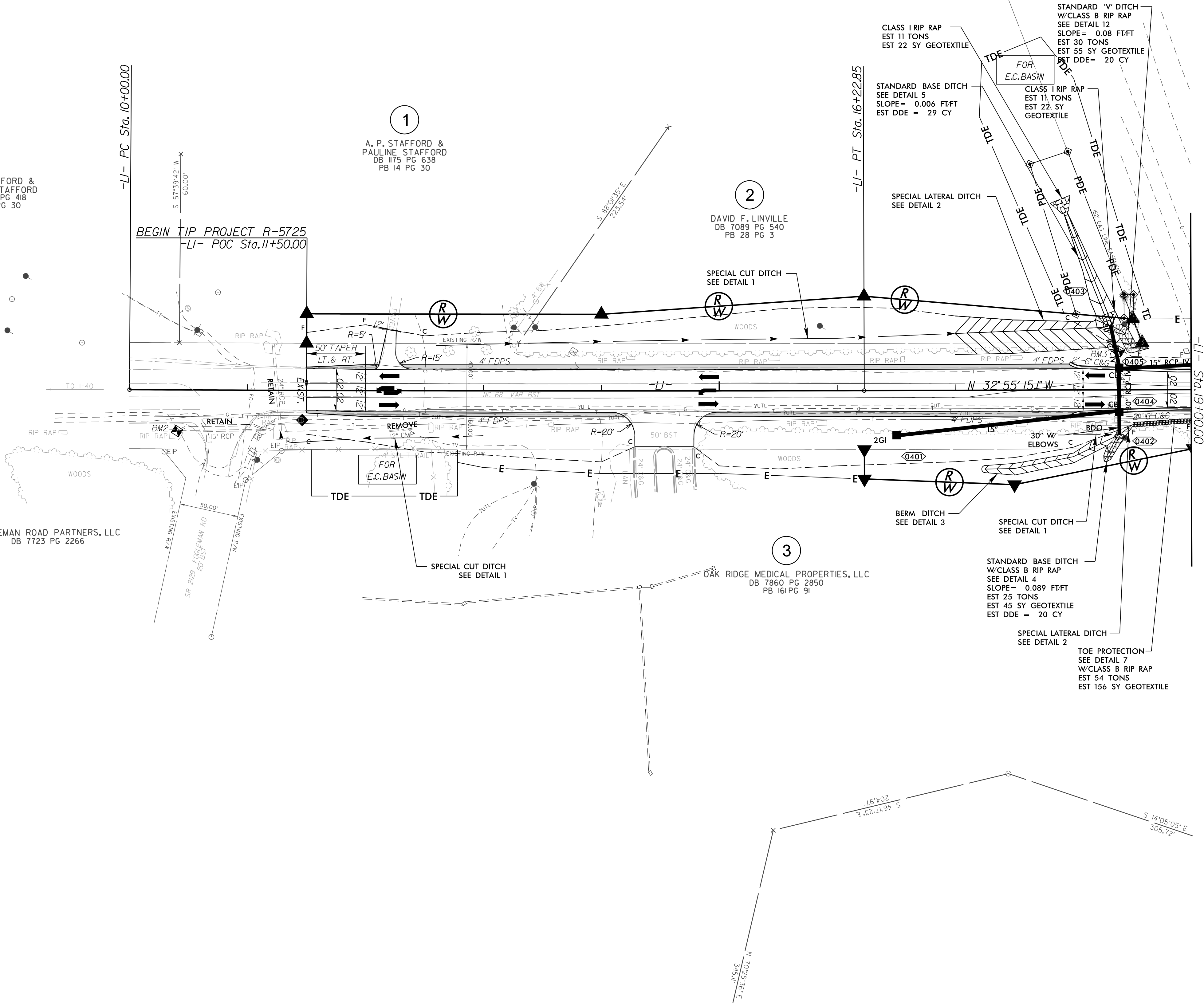
3
OAK RIDGE MEDICAL PROPERTIES, LLC
DB 7860 PG 2850
PB 161 PG 91

-LI- PC Sta. 10+00.00

BEGIN TIP PROJECT R-5725
-LI- POC Sta. 11+50.00

-LI- PT Sta. 16+22.85

MATCHLINE TO SHEET 5
-LI- Sta. 19+00.00



- PROP SIDEWALK REMOVAL
- PROP PAVEMENT REMOVAL
- PROP MONOLITHIC ISLAND
- PROP CONC SIDEWALK
- PROP PAVED SHOULDER
- FOR -LI- PROFILE, SEE SHEET 9

REVISIONS

5/14/23

5/3/2023 R5725_Rd.dwg 04.dgn
USER: mskenzie