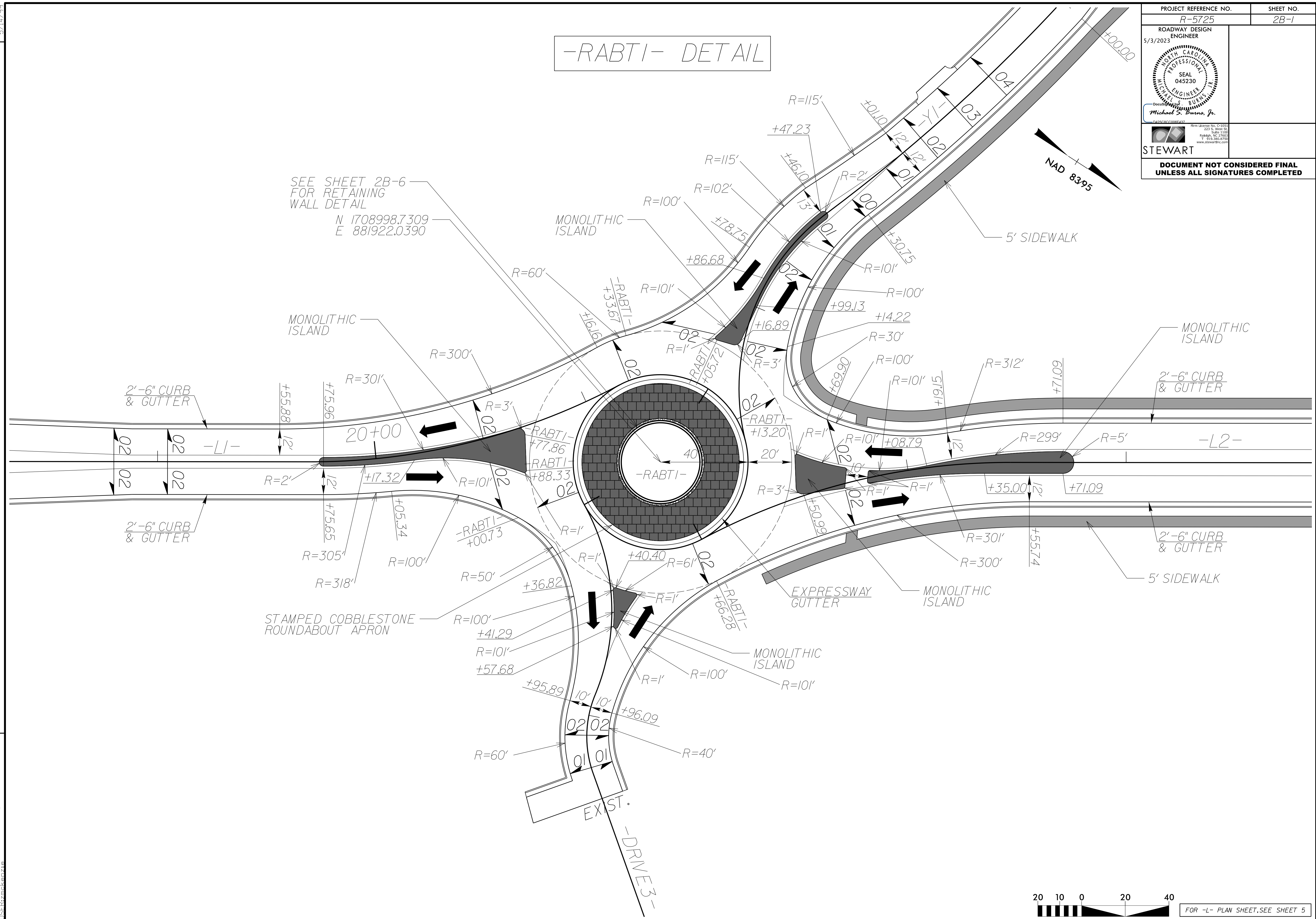


-RABTI- DETAIL

PROJECT REFERENCE NO. R-5725	SHEET NO. 2B-1
ROADWAY DESIGN ENGINEER	
5/3/2023	
DOCUMENT NOT CONSIDERED FINAL UNLESS ALL SIGNATURES COMPLETED	



SEE SHEET 2B-6
FOR RETAINING
WALL DETAIL
N 1708998.7309
E 881922.0390

2'-6" CURB
& GUTTER

2'-6" CURB
& GUTTER

2'-6" CURB
& GUTTER

2'-6" CURB
& GUTTER

STAMPED COBBLESTONE
ROUNDABOUT APRON

EXPRESSWAY
GUTTER

5' SIDEWALK

5' SIDEWALK

EXIST.
-DRIVE 3-



FOR -L- PLAN SHEET, SEE SHEET 5

REVISIONS

5/14/99

5/3/2023 R5725_Rd4_esh2B-1.dgn
USF102626216