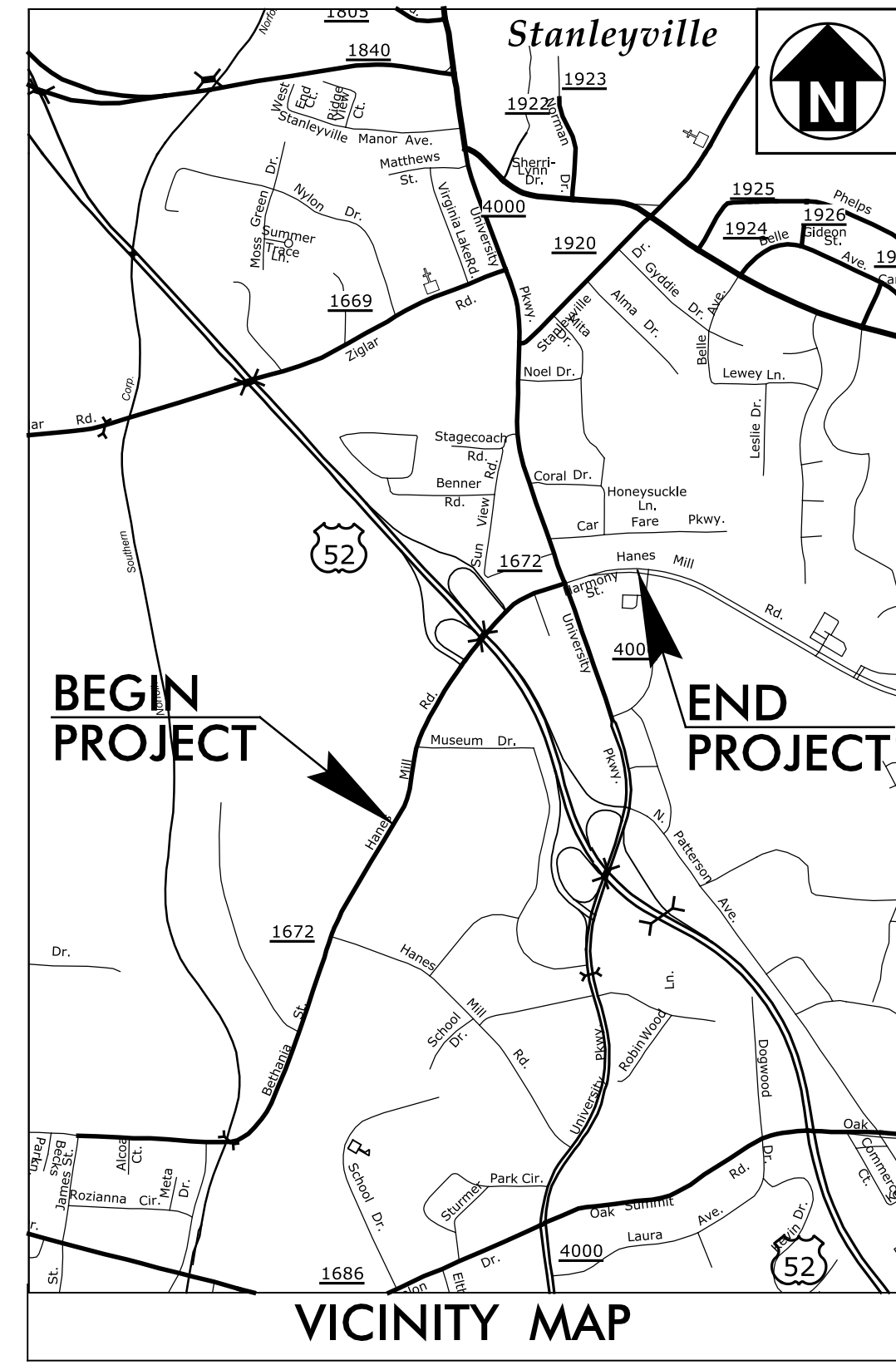


09/08/99  
 2:19:52 PM  
 T:\Projects\Hatch\_Mott\_MacDonald\U-2729\CADD\U-2729\_rdy\_tsh\_Ub0.dgn  
 white

**CONTRACT: U-2729**

See Sheet 1A For Index of Sheets



STATE OF NORTH CAROLINA  
DIVISION OF HIGHWAYS

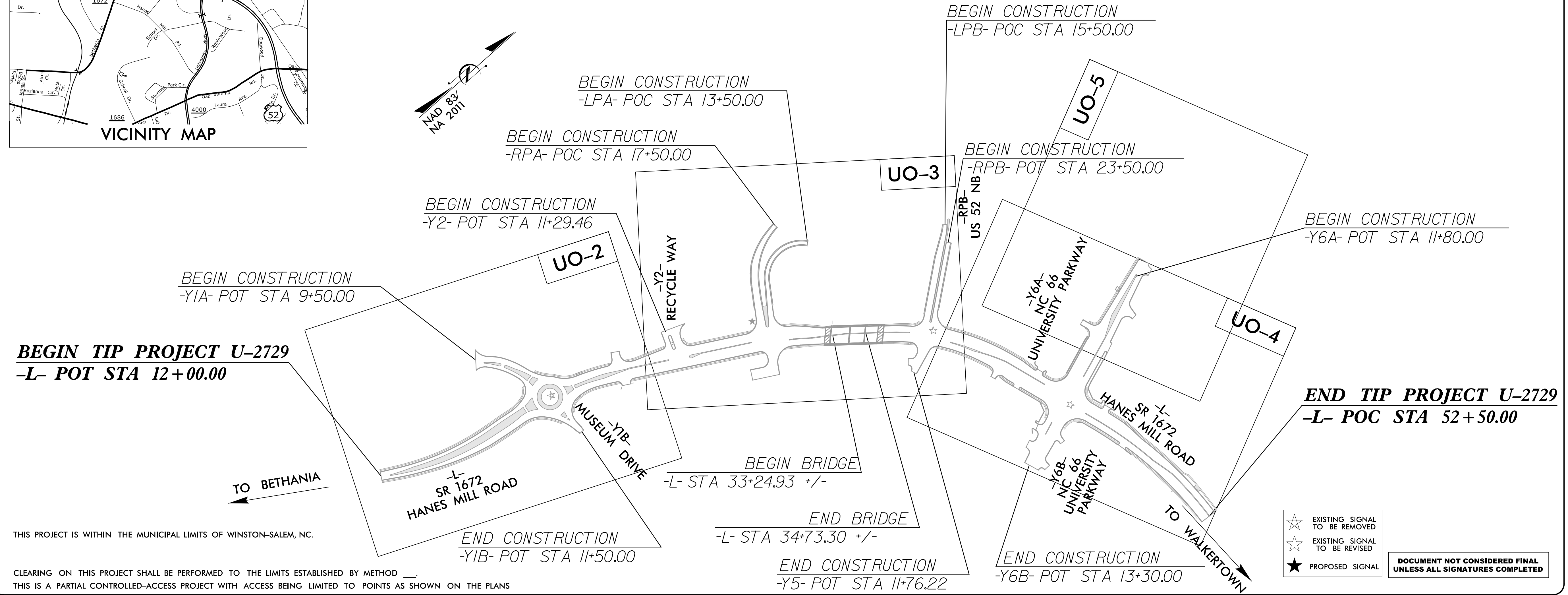
**UTILITIES BY OTHERS  
FORSYTH COUNTY**

**LOCATION: SR 1672 (HANES MILL ROAD) FROM MUSEUM DRIVE TO SR 4000 (UNIVERSITY PARKWAY) IN WINSTON-SALEM**

**TYPE OF WORK: UTILITY BY OTHERS RELOCATION**

T.I.P. NO.	SHEET NO.
U-2729	UO-1

**NOTE:**  
ALL UTILITY WORK SHOWN ON THIS SHEET IS DONE BY OTHERS. NO PAYMENT WILL BE MADE TO THE CONTRACTOR FOR UTILITY WORK SHOWN ON THIS SHEET.



**BEGIN TIP PROJECT U-2729**  
-L- POT STA 12+00.00

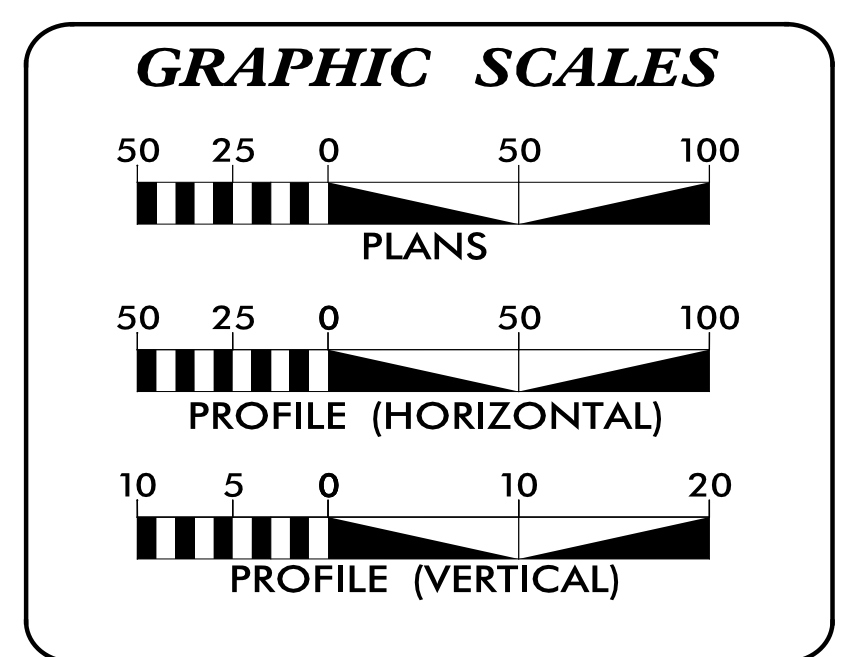
**END TIP PROJECT U-2729**  
-L- POC STA 52+50.00

THIS PROJECT IS WITHIN THE MUNICIPAL LIMITS OF WINSTON-SALEM, NC.

CLEARING ON THIS PROJECT SHALL BE PERFORMED TO THE LIMITS ESTABLISHED BY METHOD \_\_\_\_.  
THIS IS A PARTIAL CONTROLLED-ACCESS PROJECT WITH ACCESS BEING LIMITED TO POINTS AS SHOWN ON THE PLANS

- ☆ EXISTING SIGNAL TO BE REMOVED
- ☆ EXISTING SIGNAL TO BE REVISED
- ★ PROPOSED SIGNAL

DOCUMENT NOT CONSIDERED FINAL  
UNLESS ALL SIGNATURES COMPLETED



**INDEX OF SHEETS**

SHEET NO.:	DESCRIPTION:
UO-1	TITLE SHEET
UO-2 THROUGH UO-5	UBO PLAN SHEETS

**UTILITY OWNERS WITH CONFLICTS**

(A) POWER - DUKE ENERGY CAROLINAS
(B) TELEPHONE - AT&T
(C) COMMUNICATIONS - MCI / VERIZON
(D) COMMUNICATIONS - LEVEL 3
(E) COMMUNICATIONS - SEGRA
(F) COMMUNICATIONS - WINDSTREAM
(G) GAS - PIEDMONT NATURAL GAS
(H) CATV - SPECTRUM

PREPARED IN THE OFFICE OF:

**Wooten**

120 North Boylan Avenue • Raleigh, NC 27603-1423  
(919) 828-0531 • thewootencompany.com  
License Number: F-0115

WEBB WHITE	UTILITY PROJECT MANAGER
WEBB WHITE	PROJECT UTILITY COORDINATOR

**DIVISION OF HIGHWAYS  
UTILITIES UNIT**

1555 MAIL SERVICES CENTER  
RALEIGH, NC 27699-1555  
PHONE (919) 707-6690  
FAX (919) 250-4151

AL BLANTON, PE, PLS	TEAM LEAD
CONNIE JAMES, PE	PROJECT MANAGER
R. DAVID TRANTHAM	DIV. 9 UTILITY ENGINEER
JOSH McMAHAN	DIV. 9 UTILITY COORDINATOR

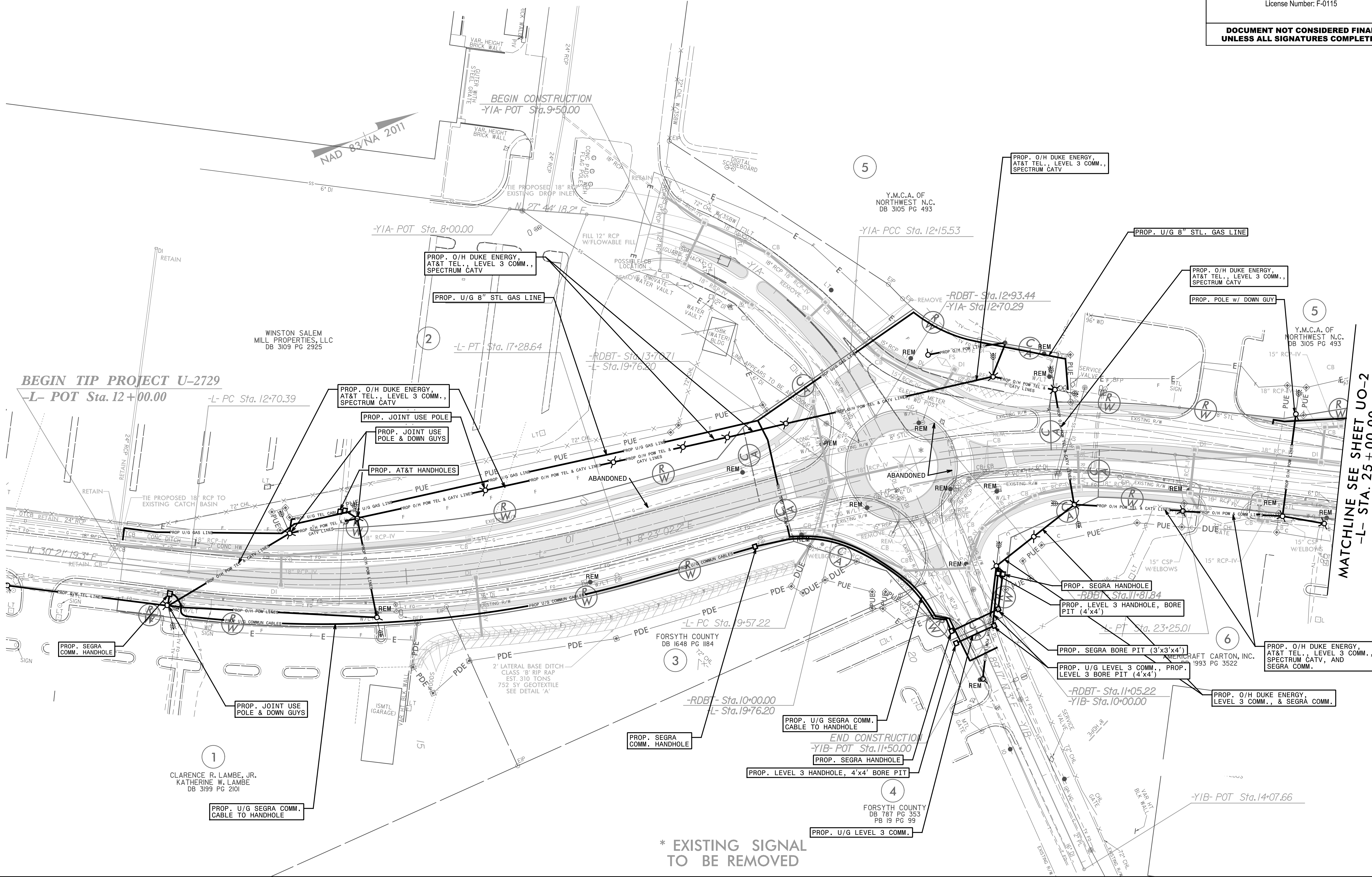
**NOTE:**  
ALL PROPOSED UTILITY WORK SHOWN ON THIS SHEET WILL BE DONE BY OTHERS

SEE SHEET 2B-1 FOR INTERSECTION DETAILS  
SEE SHEET 2B-5 THRU 2B-8 FOR ISLAND DETAILS

-L- SEE PROFILE SHEET 7  
-YIA- SEE PROFILE SHEET 8  
-YIB- SEE PROFILE SHEET 8  
-RDBT- SEE PROFILE SHEET 12

8/17/99  
8/17/99

REVISIONS



I:\06\34 AM\Projects\Hatch\_Matt\MacDonald-3160\1\U-2729\CADD\U-2729\_rdy-uti\_ub0.dgn

1  
CLARENCE R. LAMBE, JR.  
KATHERINE W. LAMBE  
DB 3199 PG 2101

PROP. U/G SEGRA COMM. CABLE TO HANDHOLE

PROP. O/H DUKE ENERGY, AT&T TEL., LEVEL 3 COMM., SPECTRUM CATV

PROP. JOINT USE POLE

PROP. JOINT USE POLE & DOWN GUYS

PROP. AT&T HANDHOLES

PROP. U/G 8" STL GAS LINE

PROP. O/H DUKE ENERGY, AT&T TEL., LEVEL 3 COMM., SPECTRUM CATV

PROP. SEGRA COMM. HANDHOLE

3  
FORSYTH COUNTY  
DB 1648 PG 184

\* EXISTING SIGNAL TO BE REMOVED

PROP. U/G SEGRA COMM. CABLE TO HANDHOLE

PROP. LEVEL 3 HANDHOLE, 4'x4' BORE PIT

4  
FORSYTH COUNTY  
DB 787 PG 353  
PB 19 PG 99

5  
Y.M.C.A. OF NORTHWEST N.C.  
DB 3105 PG 493

PROP. O/H DUKE ENERGY, AT&T TEL., LEVEL 3 COMM., SPECTRUM CATV

PROP. SEGRA HANDHOLE

PROP. LEVEL 3 HANDHOLE, BORE PIT (4'x4')

PROP. SEGRA BORE PIT (3'x3'x4')

PROP. U/G LEVEL 3 COMM., PROP. LEVEL 3 BORE PIT (4'x4')

-RDBT- Sta. 11+05.22  
-YIB- Sta. 10+00.00

PROP. O/H DUKE ENERGY, AT&T TEL., LEVEL 3 COMM., SPECTRUM CATV, AND SEGRA COMM.

-YIB- POT Sta. 14+07.66

PROP. O/H DUKE ENERGY, AT&T TEL., LEVEL 3 COMM., SPECTRUM CATV

PROP. POLE W/ DOWN GUY

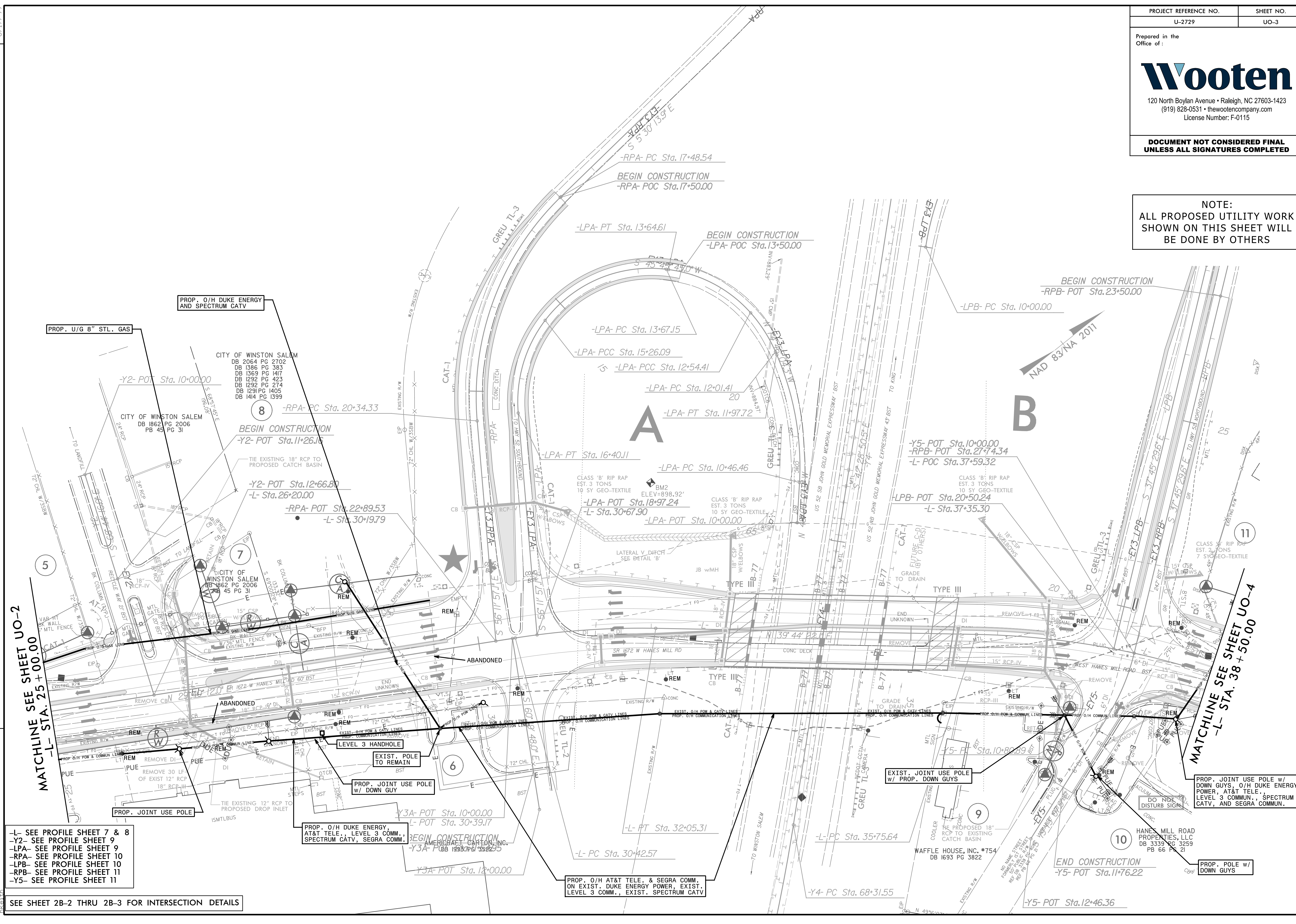
5  
Y.M.C.A. OF NORTHWEST N.C.  
DB 3105 PG 493

MATCHLINE SEE SHEET UO-2  
-L- STA. 25+00.00

6  
AERIALCRAFT CARTON, INC.  
1993 PG 3522

**NOTE:**  
ALL PROPOSED UTILITY WORK SHOWN ON THIS SHEET WILL BE DONE BY OTHERS

REVISIONS  
 8/17/99  
 I:\Projects\Hatch\_Mott\_MacDonald\3160\U-2729\CADD\U-2729\_rdu-utl\_UO.dgn  
 10/7/08 AM  
 I:\Projects\Hatch\_Mott\_MacDonald\3160\U-2729\CADD\U-2729\_rdu-utl\_UO.dgn



-L- SEE PROFILE SHEET 7 & 8  
 -Y2- SEE PROFILE SHEET 9  
 -LPA- SEE PROFILE SHEET 9  
 -RPA- SEE PROFILE SHEET 10  
 -LPB- SEE PROFILE SHEET 10  
 -RPB- SEE PROFILE SHEET 11  
 -Y5- SEE PROFILE SHEET 11

SEE SHEET 2B-2 THRU 2B-3 FOR INTERSECTION DETAILS

PROP. O/H DUKE ENERGY,  
 AT&T TELE., LEVEL 3 COMM.,  
 SPECTRUM CATV, SEGRA COMM.

PROP. O/H AT&T TELE. & SEGRA COMM.  
 ON EXIST. DUKE ENERGY POWER, EXIST.  
 LEVEL 3 COMM., EXIST. SPECTRUM CATV

EXIST. JOINT USE POLE  
 W/ PROP. DOWN GUYS

PROP. JOINT USE POLE W/  
 DOWN GUYS, O/H DUKE ENERGY  
 POWER, AT&T TELE.,  
 LEVEL 3 COMM., SPECTRUM  
 CATV, AND SEGRA COMM.

PROP. POLE W/  
 DOWN GUYS

MATCHLINE SEE SHEET UO-2  
 -L- STA. 25+00.00

MATCHLINE SEE SHEET UO-4  
 -L- STA. 38+50.00

Prepared in the Office of:



120 North Boylan Avenue • Raleigh, NC 27603-1423  
 (919) 828-0531 • thewootencompany.com  
 License Number: F-0115

**DOCUMENT NOT CONSIDERED FINAL  
 UNLESS ALL SIGNATURES COMPLETED**

**MATCHLINE SEE SHEET UO-5  
 -Y6A- STA. 16+00.00**

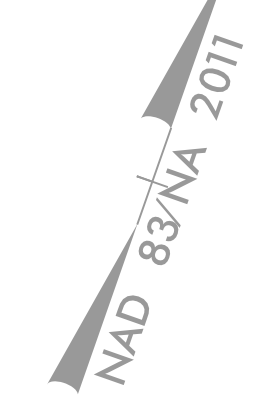
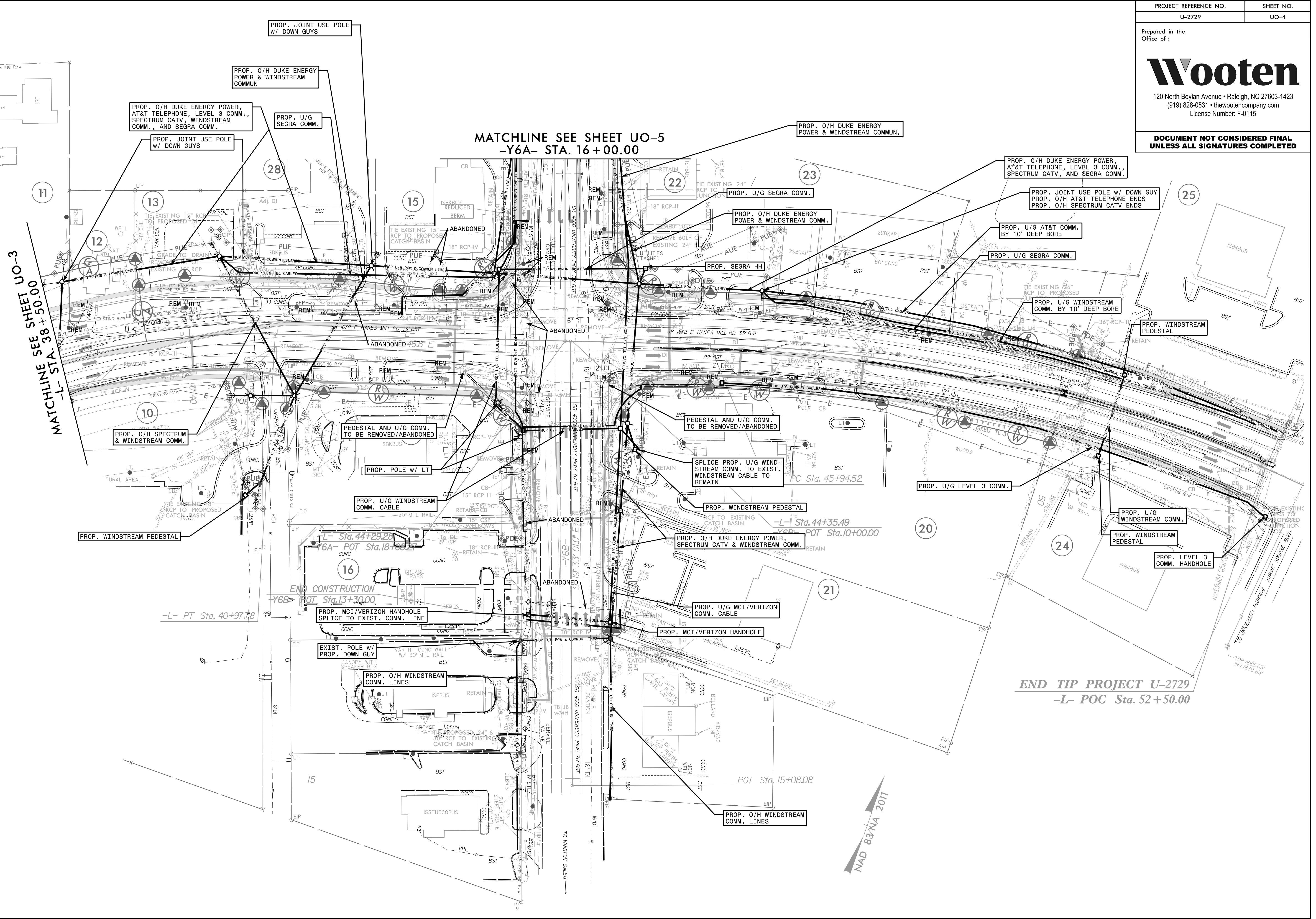
MATCHLINE SEE SHEET UO-3  
 -L- STA. 38+50.00

**END TIP PROJECT U-2729  
 -L- POC Sta. 52+50.00**

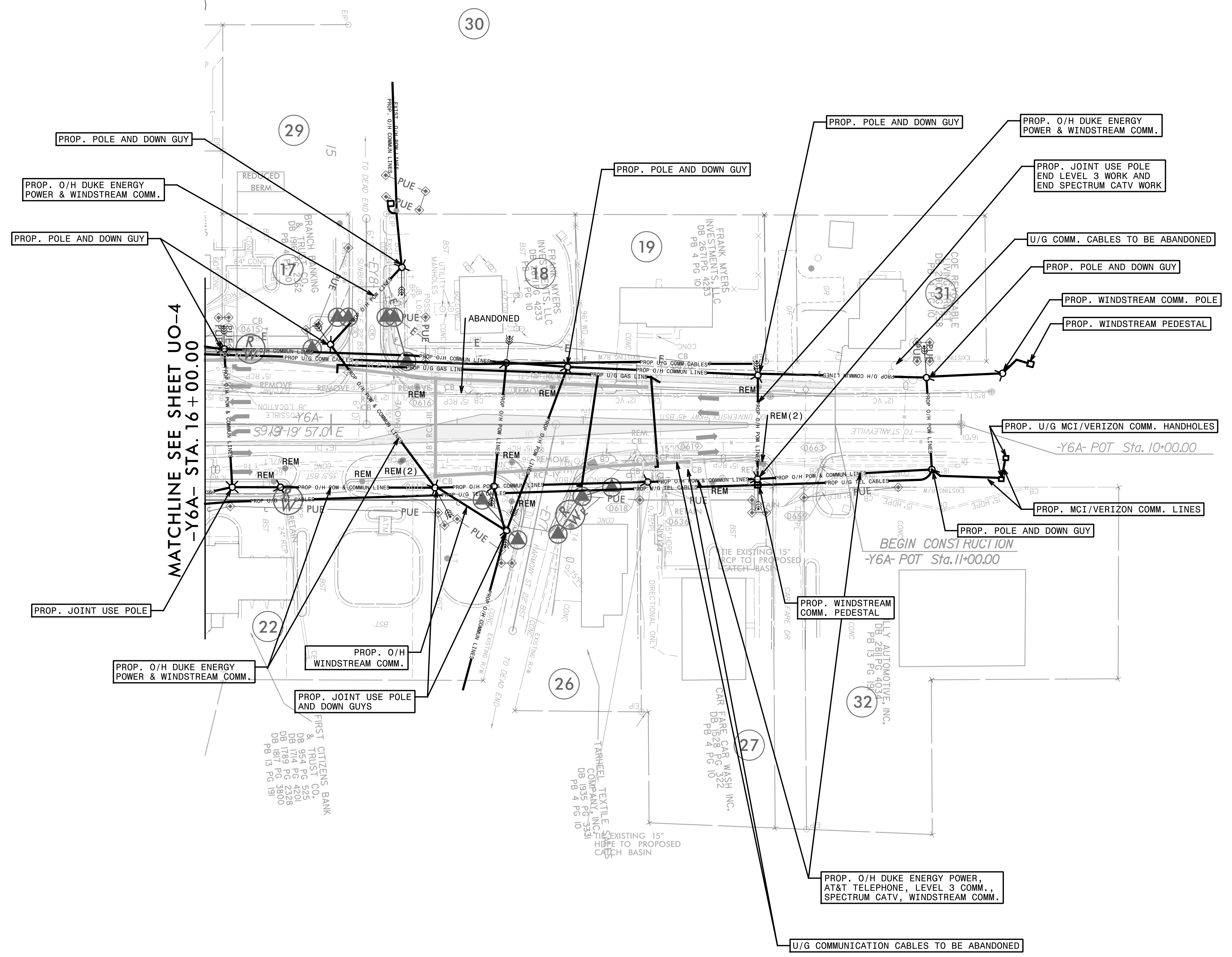
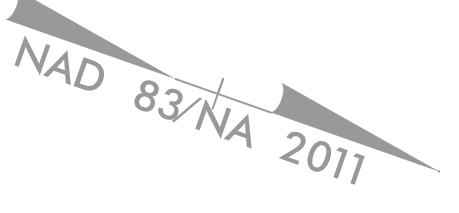
REVISIONS

8/17/99

3:07:16 PM  
 I:\projects\Hatch\_McCormick\2729\CADD\UO-4.dgn



NOTE:  
ALL PROPOSED UTILITY WORK  
SHOWN ON THIS SHEET WILL  
BE DONE BY OTHERS



REVISIONS

8/17/99

I:\05\I\AM  
Projects\Hatch\_Mott\_MacDonald-3160\1\U-2729\CADD\U2729\_r.dwg-utl\_Ub0.dgn