


**STATE OF NORTH CAROLINA
DEPARTMENT OF TRANSPORTATION**

**SIGNING PLAN
FORSYTH COUNTY**

**LOCATION: SR 1672 (HANES MILL ROAD) FROM MUSEUM DRIVE TO
NC 66 (UNIVERSITY PARKWAY) IN WINSTON-SALEM**

PROJECT REFERENCE NO. U-2729	SHEET NO. SIGN-1
APPROVED: _____	
DATE: _____	
SEAL	
	
DOCUMENT NOT CONSIDERED FINAL UNLESS ALL SIGNATURES COMPLETED	

T.I.P.: U-2729

ROADWAY STANDARD DRAWING

THE FOLLOWING ROADWAY STANDARDS AS APPEAR IN "ROADWAY STANDARD DRAWINGS" - PROJECT SERVICES UNIT - N.C. DEPARTMENT OF TRANSPORTATION - RALEIGH, N.C., DATED JANUARY 2018 ARE APPLICABLE TO THIS PROJECT AND BY REFERENCE HEREBY ARE CONSIDERED A PART OF THESE PLANS:

STD. NO.	TITLE
901.10	TYPE 'A' SIGNS
901.20	TYPE 'B' SIGNS
901.50	ARROWS AND SHIELDS
901.60	RIVET SPACING FOR OVERLAYED SIGNS
901.70	SIGN STRINGERS AND SUPPORT SPACING
901.80	SIGN MOUNTING DETAILS - FOR TYPE A AND TYPE B SIGNS
903.10	GROUND MOUNTED SIGN SUPPORTS
904.10	ORIENTATION OF GROUND MOUNTED SIGNS
904.20	SECONDARY SIGN MOUNTING
904.30	SUPPLEMENTAL SIGN MOUNTING
904.50	MOUNTING OF TYPE 'D', 'E' AND 'F' SIGNS ON 'U' CHANNEL POSTS
910.40	SINGLE/TWO LANE ROUNDABOUT WITH PEDESTRIAN
910.50	SIGNING FOR SPEED REDUCTION ZONE

PROJECT NOTES

- DISPOSAL OF SIGN SYSTEM, U-CHANNEL
- DISPOSAL OF SUPPORT, U-CHANNEL
- DISPOSAL OF SUPPORT, STEEL BEAM
- RELOCATE SIGN, TYPE A (GROUND MOUNTED)
- RELOCATE SIGN, TYPE B (GROUND MOUNTED)
- RELOCATE SIGN, TYPE E
- DISPOSAL OF SIGN SYSTEM, STEEL BEAM
- TO BE RELOCATED BY OTHERS

GENERAL NOTES

- SIGNS FURNISHED BY STATE
- CONFIRM IN WRITING AT LEAST 4 MONTHS IN ADVANCE, THE ACTUAL DATE THE DEPARTMENT FURNISHED SIGNS WILL BE REQUIRED.
- ALL TYPE 'D' SIGNS SHALL BE MOUNTED ON TWO U-CHANNEL POSTS UNLESS OTHERWISE INDICATED ON THE PLANS.
- IF REMOVAL OR RELOCATION OF SIGNS ON PRIVATE STREET (NON-STATE MAINTAINED) IS REQUIRED DUE TO CONSTRUCTION, THE CONTRACTOR SHALL INFORM THE ENGINEER. THE WORK WILL BE COMPLETED BY OTHERS.
- WHEN NOT STATIONED OR DIMENSIONED ON PLANS, ALL 'E' AND 'F' SIGNS SHALL BE FIELD LOCATED BY THE ENGINEER
- ALL EXISTING SIGNS ON "U" CHANNEL POST WITHIN THE PROJECT LIMITS SHALL BE REMOVED AND DISPOSED OF UNLESS OTHERWISE NOTED ON PLANS.
- WHEN EXISTING SIGNS ARE REMOVED AND INSTALLED ON NEW SUPPORTS, THE RE-ERECTION SHALL IMMEDIATELY FOLLOW THE REMOVAL.
- THE BACKGROUND FOR TYPE E & F SIGNS SHALL BE TYPE C REFLECTIVE SHEETING.
- DO NOT BEGIN FABRICATION FOR TYPES A & B SIGNS MOUNTED ON OVERHEAD STRUCTURES OR STEEL SUPPORTS UNTIL "S" DIMENSIONS HAVE BEEN FIELD VERIFIED.
- SEE ROADWAY PLANS FOR GUARD/GUIDE RAIL DETAILS.

SUMMARY OF QUANTITIES

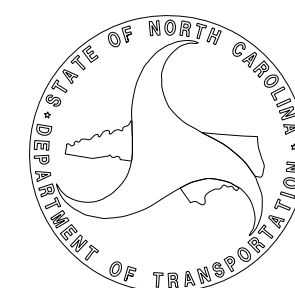
ITEM NO.	DESC. NO.	SECT. NO.	ITEM DESCRIPTION	QUANTITY	UNIT
4048000000	902		REINFORCED CONCRETE SIGN FOUNDATION	4	C.Y.
4054000000	902		PLAIN CONCRETE SIGN FOUNDATION	2	C.Y.
4060000000	903		SUPPORTS, BREAKAWAY STEEL BEAM	3114	LB.
4066000000	903		SUPPORTS, SIMPLE STEEL BEAM	1850	LB.
4072000000	903		SUPPORTS, 3 LB. STEEL U-CHANNEL	1450	L.F.
4096000000	904		SIGN ERECTION, TYPE D	2	EA.
4102000000	904		SIGN ERECTION, TYPE E	76	EA.
4108000000	904		SIGN ERECTION, TYPE F	4	EA.
4110000000	904		SIGN ERECTION, TYPE A (GROUND MOUNTED)	10	EA.
4110000000	904		SIGN ERECTION, TYPE B (GROUND MOUNTED)	2	EA.
4116100000	904		SIGN ERECTION, RELOCATE SIGN TYPE A (GROUND MOUNTED)	5	EA.
4116100000	904		SIGN ERECTION, RELOCATE SIGN TYPE B (GROUND MOUNTED)	2	EA.
4116100000	904		SIGN ERECTION, RELOCATE SIGN TYPE E	7	EA.
4138000000	907		DISPOSAL OF SUPPORT, STEEL BEAM	7	EA.
4152000000	907		DISPOSAL OF SIGN SYSTEM, STEEL BEAM	1	EA.
4155000000	907		DISPOSAL OF SIGN SYSTEM, U-CHANNEL	50	EA.
4192000000	907		DISPOSAL OF SUPPORT, U-CHANNEL	7	EA.

INDEX

SHEET NO.	DESCRIPTION
SIGN-1	TITLE SHEET
SIGN-1A-1D	REVISED ROADWAY STANDARD DRAWINGS
SIGN-2	TYPE "A" & "B" SIGN SUPPORT INFORMATION
SIGN-3 - 3A	SIGN DESIGNS
SIGN-4	TYPE "E" AND "F" SIGNS
SIGN-5 - 7A	SIGNING PLAN SHEETS

PLAN SUBMITTED TO:

CONNIE JAMES, PE - DIVISION PROJECT ENGINEER



PLAN PREPARED BY: MOTT MACDONALD

DAVID W BISSETTE, PE PRINCIPAL PROJECT MANAGER
SAM COLEMAN, PE PROJECT ENGINEER

PLANS PREPARED FOR THE NCDOT BY:
M MOTT MACDONALD I & E, LLC
1101 HAYNES STREET, SUITE 101
RALEIGH, NC 27604
M MOTT MACDONALD
NC LICENSE NO. F-0669

CONTRACT:



DOCUMENT NOT CONSIDERED FINAL UNLESS ALL SIGNATURES COMPLETED

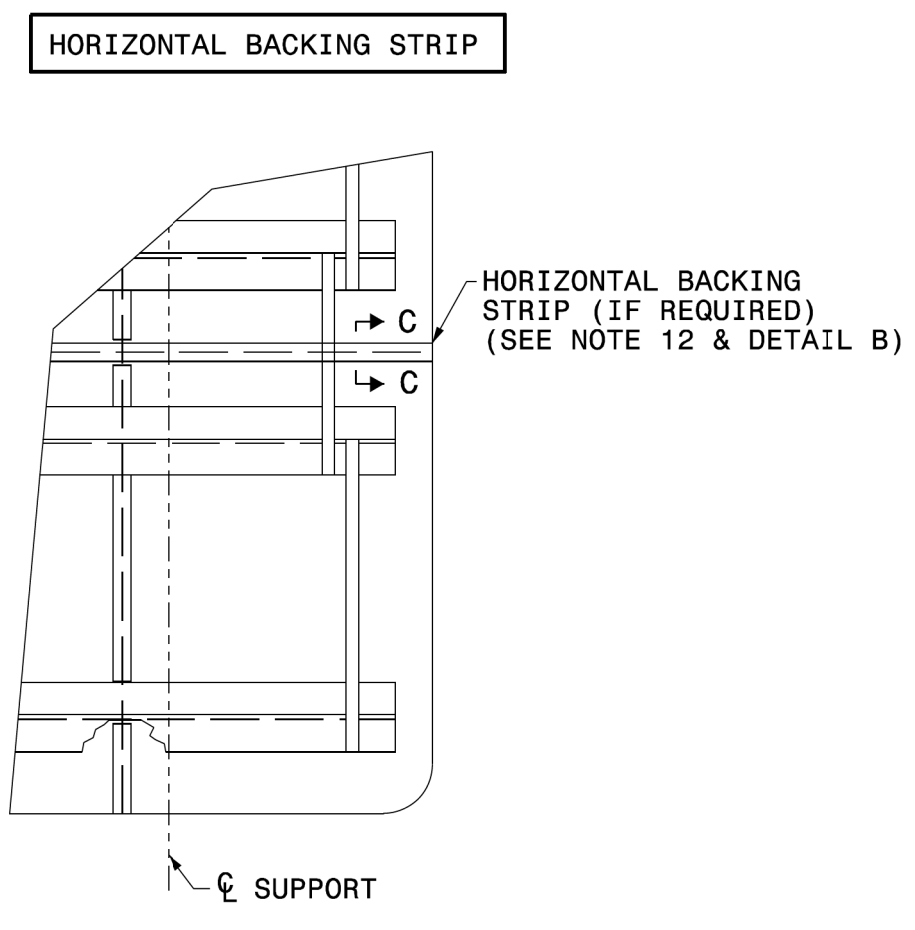
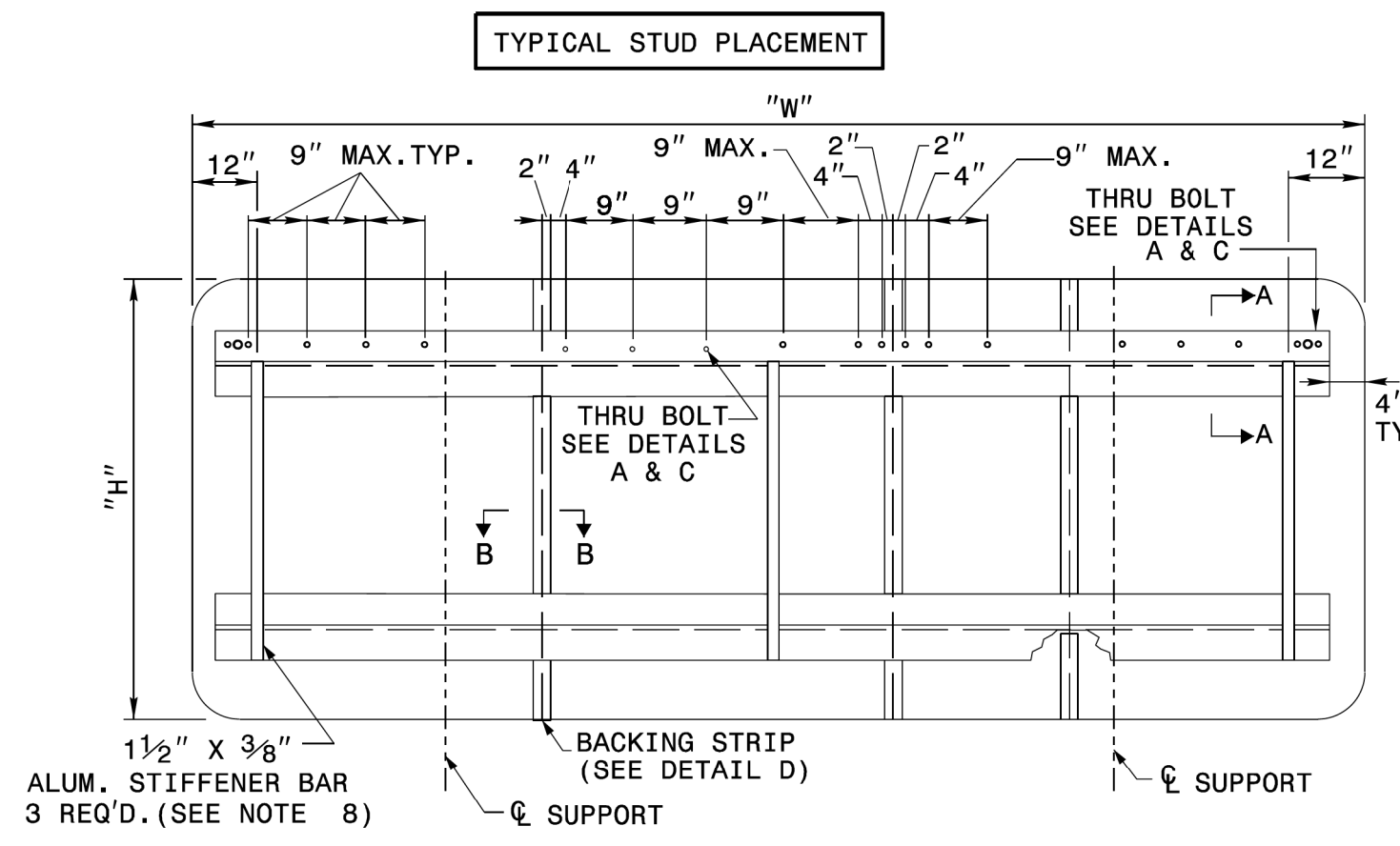
TIP NO.	SHEET NO.
DocuSigned by:	
<i>Matthew V. Springer</i>	
APPROVED:	3/21/2019
DATE:	BC60F8E8B584403...
SEAL	

STATE OF NORTH CAROLINA
DEPT. OF TRANSPORTATION
DIVISION OF HIGHWAYS
RALEIGH, N.C.

2-19

ENGLISH DETAIL DRAWING FOR
TYPE 'A' SIGNS
WELED STUD CONSTRUCTION

SHEET 1 OF 2
901D10



- NOTES:
1. USE THE NUMBER AND SIZE OF SUPPORTS SHOWN ON THE SUPPORT CHART IN PROJECT PLANS.
 2. FABRICATE SIGN PANEL SECTIONS WITH SHEETS 4'-0" WIDE. WHEN FABRICATING SIGNS WHICH ARE NOT MULTIPLES OF 4'-0" IN WIDTH, DO NOT CUT MORE THAN TWO SHEETS TO LESS THAN 4'-0" IN WIDTH. THESE PANELS SHALL NOT BE LESS THAN 1'-0" IN WIDTH.
 3. SEE NCDOT STANDARD SPECIFICATIONS FOR ROADS AND STRUCTURES, FOR TYPE OF MATERIAL TO BE USED FOR SIGN PANELS, HANGER ASSEMBLIES, AND SUPPORTS.
 4. USE GALVANIZED STEEL FOR BACKING PLATES AND MOUNTING BOLTS.
 5. SEE ROADWAY STANDARD 904.20 WHEN TYPE "B" SECONDARY SIGN MOUNTING IS REQUIRED.
 6. DETAILS FOR TYPE "A" SECONDARY SIGNS SHALL BE THE SAME AS FOR TYPE "A" SIGNS.
 7. THE VERTICAL DIMENSION BETWEEN PRIMARY AND SECONDARY SIGNS IS TWO (2) INCHES.
 8. ADJUST STIFFENERS TO AVOID CONFLICT WITH SUPPORTS.
 9. SEE ROADWAY STANDARD 901.70 FOR SUPPORT AND "Z" BAR SPACING.
 10. FABRICATE SIGNS TALLER THAN 12'-0" AS TWO SEPARATE SIGNS WITH A HORIZONTAL SPLICE. LOCATE STRINGERS ON EACH SECTION OF THE SIGN BY THE SIGN STRINGER CHART. (SEE ROADWAY STANDARD 901.70)
 11. FABRICATE SIGNS TALLER THAN 12'-0" BUT SHORTER THAN 14'-6" WITH A HORIZONTAL SPLICE LOCATED 7'-0" FROM BOTTOM OF SIGN.
 12. FABRICATE SIGNS 14'-6" TALL AND TALLER WITH A HORIZONTAL SPLICE. LOCATE THE SPLICE AT LEAST HALF OF THE SIGN HEIGHT FROM THE BOTTOM AND AT LEAST 7'-0" FROM THE TOP.
 13. THERE SHALL ONLY BE A 1/8" GAP BETWEEN THE VERTICAL BACKING STRIP AND THE "Z" BAR.
 14. SEE ROADWAY STANDARD 901.80 FOR DETAILS SHOWING SIGN MOUNTING TO SUPPORTS.
 15. PLACE NYLON WASHER UNDER HEAD OF 3/8" THRU BOLTS.
 16. FABRICATE EACH SIGN WITH 3/8" DIA. THRU BOLT, 4" FROM EACH END OF EACH "Z" BAR THRU SIGN PANEL AND "Z" BAR. SEE DETAILS A & C.
 17. FABRICATE EACH SIGN WITH 3/8" DIA. THRU BOLT CENTERED IN EACH PANEL THRU THE TOP AND BOTTOM "Z" BAR. CENTERED THRU BOLT REQUIRED IN END PANELS GREATER THAN 2'-0" WIDE. SEE DETAILS A & C.
 18. THRU BOLTS WILL HAVE A MINIMUM 1/16" TO MAXIMUM 1/8" GAP

STATE OF NORTH CAROLINA
DEPT. OF TRANSPORTATION
DIVISION OF HIGHWAYS
RALEIGH, N.C.

2-19

ENGLISH DETAIL DRAWING FOR
TYPE 'A' SIGNS
WELED STUD CONSTRUCTION

SHEET 1 OF 2
901D10

REVISED SIGNING ROADWAY STANDARD DRAWING

REVISED ROADWAY STANDARD DRAWING



DOCUMENT NOT CONSIDERED FINAL
UNLESS ALL SIGNATURES COMPLETED

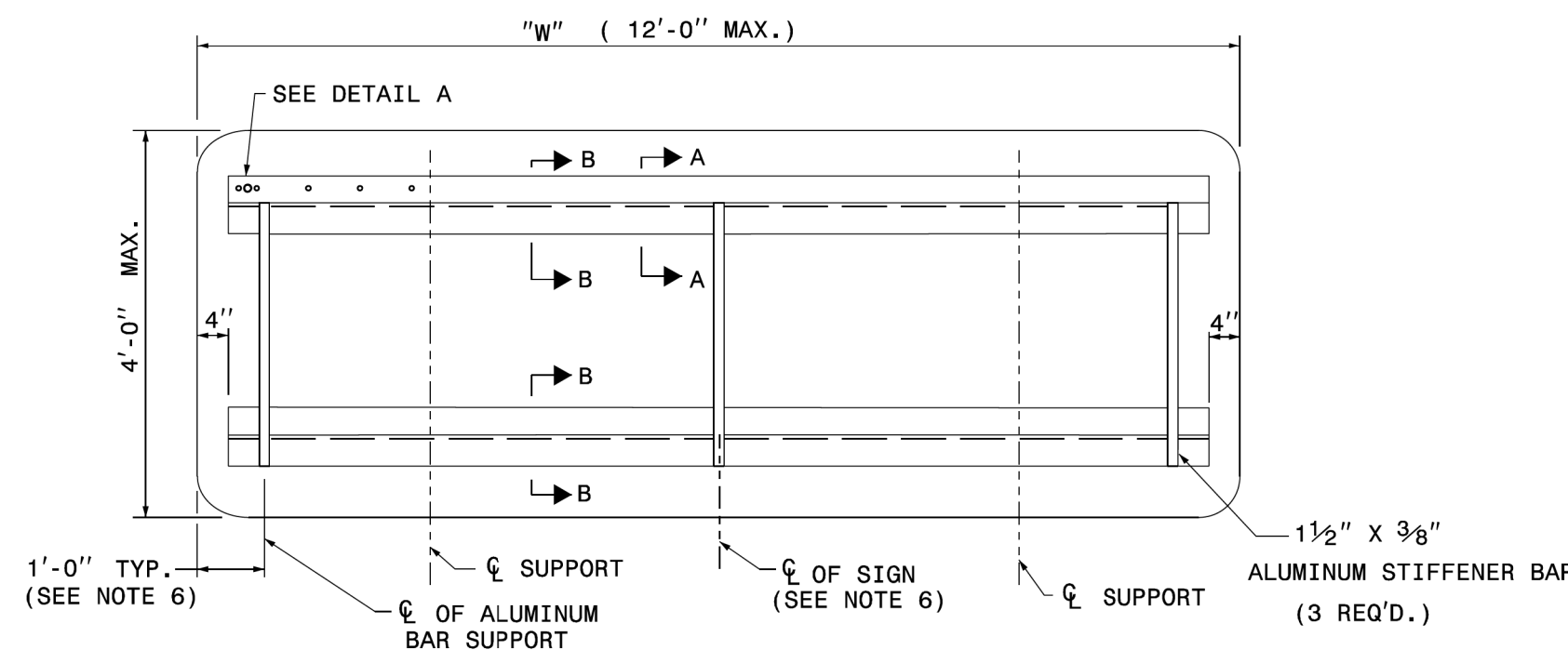
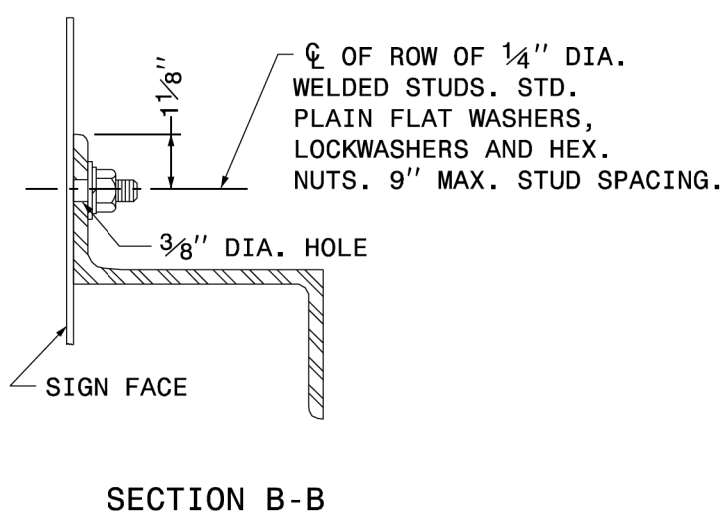
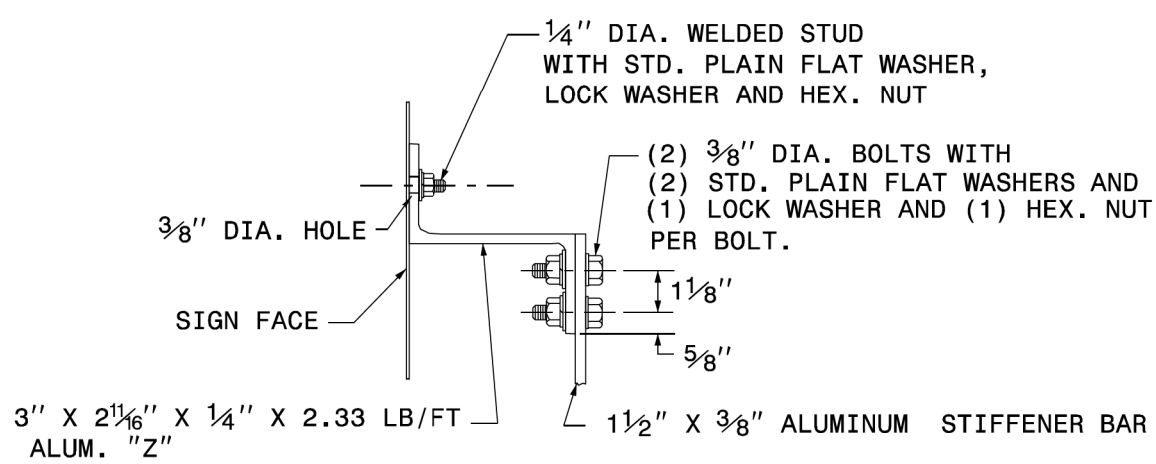
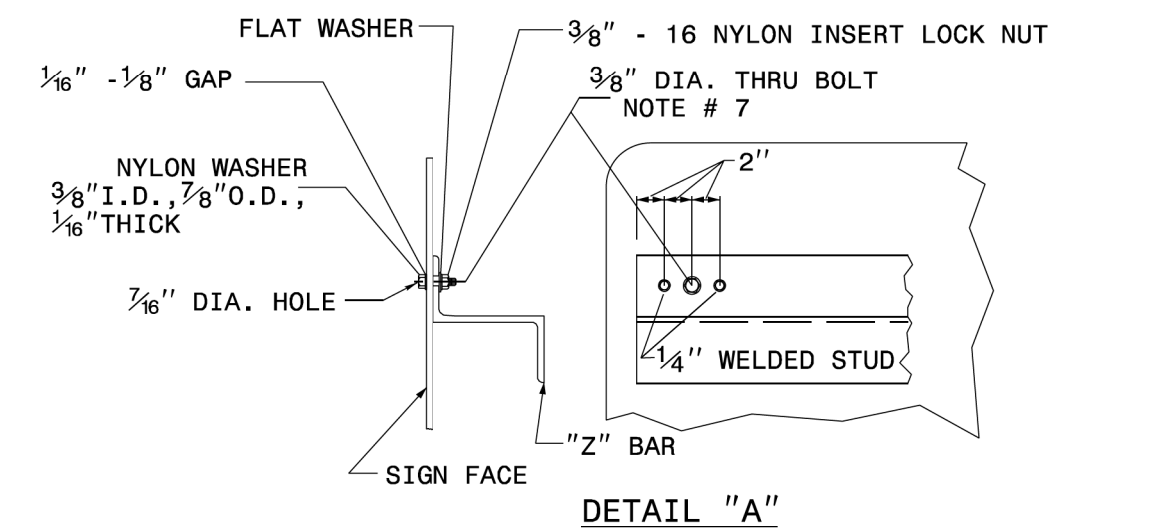
TIP NO. SHEET NO.
DocuSigned by:
APPROVED: *Matthew V. Spring*
DATE: 3/21/2019
SEAL

STATE OF NORTH CAROLINA
DEPT. OF TRANSPORTATION
DIVISION OF HIGHWAYS
RALEIGH, N.C.
2-19

ENGLISH DETAIL DRAWING FOR
TYPE 'B' SIGNS
WELED STUD CONSTRUCTION
SHEET 1 OF 1
901D20

STATE OF NORTH CAROLINA
DEPT. OF TRANSPORTATION
DIVISION OF HIGHWAYS
RALEIGH, N.C.
2-19

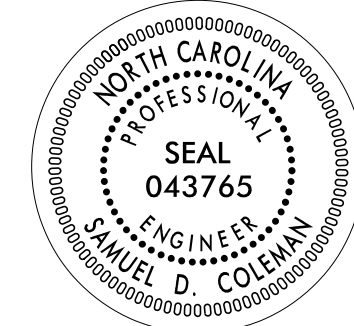
ENGLISH DETAIL DRAWING FOR
TYPE 'B' SIGNS
WELED STUD CONSTRUCTION
SHEET 1 OF 1
901D20



- NOTES:
1. USE NUMBER AND SIZE OF SUPPORTS SHOWN ON SUPPORT CHART IN PROJECT PLAN SHEETS.
 2. SEE NCDOT STANDARD SPECIFICATIONS FOR ROADS AND STRUCTURES FOR THE TYPE OF MATERIAL TO BE USED FOR SIGN PANELS, HANGER ASSEMBLIES AND SUPPORTS.
 3. FURNISH ALL MOUNTING HARDWARE.
 4. USE GALVANIZED STEEL FOR BACKING PLATES AND MOUNTING BOLTS.
 5. THE VERTICAL DIMENSION BETWEEN PRIMARY AND SECONDARY SIGNS IS TWO (2) INCHES.
 6. ADJUST STIFFENERS TO AVOID CONFLICT WITH SUPPORTS.
 7. FABRICATE EACH SIGN WITH A 3/8" DIA. BOLT 4" FROM EACH END OF EACH "Z" BAR THRU SIGN PANEL AND "Z" BAR.
 8. SEE ROADWAY STANDARD 901.70 FOR SUPPORT AND "Z" BAR SPACING.
 9. SEE ROADWAY STANDARD 901.80 FOR DETAILS SHOWING SIGN MOUNTING TO SUPPORTS.
 10. PLACE NYLON WASHER UNDER HEAD OF 3/8" THRU BOLT.
 11. THRU BOLTS WILL HAVE A MINIMUM 1/16" TO MAXIMUM 1/8" GAP.

REVISED SIGNING
ROADWAY STANDARD DRAWING

REVISED
ROADWAY STANDARD DRAWING



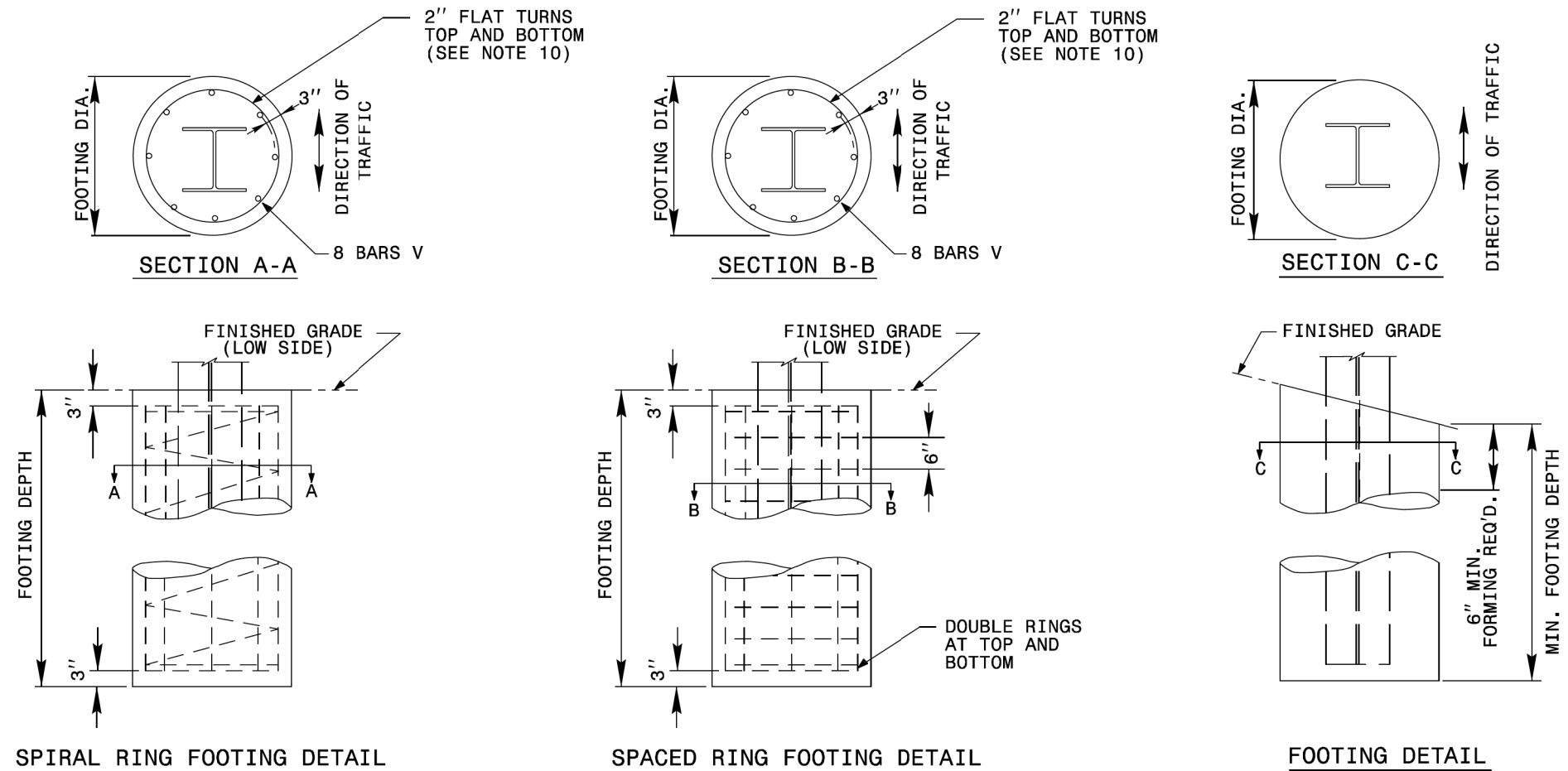
TIP NO.	SHEET NO.
DocuSigned by:	
<i>Matthew U. Springs</i>	
APPROVED:	5/26/2020
DATE:	5/26/2020
SEAL	

STATE OF NORTH CAROLINA
DEPT. OF TRANSPORTATION
DIVISION OF HIGHWAYS
RALEIGH, N.C.

ENGLISH DETAIL DRAWING FOR
GROUND MOUNTED SIGN SUPPORTS

SHEET 2 OF 3
903D10

BEAM SHAPE	SLIP BASE PLATE DATA							KEEPER PLATE DATA							HINGE CONNECTION DATA							BREAK AWAY SUPPORT WEIGHT CONSTANT LBS.				
	BOLT SIZE	A ₁	B ₁	C ₁	D ₁	E ₁	T ₁	R ₁	A ₂	B ₂	C ₂	D ₂	E ₂	T ₂	BOLT SIZE	F	G	H	I	J	K		L	R ₃	T ₃	
S3X5.7	1/2"DIA.X 3/4"	7"	4"	1"	3/4"	2 1/2"	1"	8/32"	7"	4"	1"	3/4"	2 1/2"	8/32"	28 GAUGE	1/2"DIA.X1 3/4"	2 1/4"	3 1/2"	4"	1 1/2"	1"	1 1/2"	2"	8/32"	3 8"	18
S4X7.7	1/2"DIA.X 3/4"	8"	4"	1"	3/4"	2 1/2"	1"	8/32"	8"	4"	1"	3/4"	2 1/2"	8/32"	28 GAUGE	1/2"DIA.X1 3/4"	2 5/8"	3 1/2"	4"	1 1/2"	1"	1 1/2"	2"	8/32"	3 8"	20
W6X9	1/2"DIA.X 3/4"	10"	5"	1"	3/4"	3 1/2"	1"	8/32"	10"	5"	1"	3/4"	3 1/2"	8/32"	28 GAUGE	1/2"DIA.X1 3/4"	4"	3 1/2"	4"	3/4"	1"	1 1/2"	2"	8/32"	3 8"	32
W6X12	5/8"DIA.X 4"	11"	5"	1 1/4"	7/8"	3 1/4"	1 1/4"	11/32"	11"	5"	1 1/4"	7/8"	3 1/4"	11/32"	28 GAUGE	5/8"DIA.X 2"	4"	4"	4 1/2"	3/4"	1 1/8"	5/8"	2 1/4"	11/32"	3 8"	39
W6X16	5/8"DIA.X 4 1/2"	12"	6"	1 1/4"	7/8"	4 1/4"	1 1/2"	11/32"	12"	6"	1 1/4"	7/8"	4 1/4"	11/32"	28 GAUGE	5/8"DIA.X2 1/4"	4"	4"	4 1/2"	3/4"	1 1/8"	5/8"	2 1/4"	11/32"	3 8"	47
W8X18	5/8"DIA.X 4 1/2"	13 1/2"	6 1/2"	1 1/4"	7/8"	4 3/4"	1 1/2"	11/32"	13 1/2"	6 1/2"	1 1/4"	7/8"	4 3/4"	11/32"	28 GAUGE	5/8"DIA.X2 1/4"	5 1/4"	4"	4 1/2"	1"	1 1/8"	5/8"	2 1/4"	11/32"	3 8"	70
W8X21	3/4"DIA.X 4 1/2"	14"	7"	1 1/2"	1"	5"	1 1/2"	13/32"	14"	7"	1 1/2"	1"	5"	13/32"	28 GAUGE	3/4"DIA.X2 1/2"	5 1/4"	6"	7"	1"	1 3/4"	3/4"	3 1/2"	13/32"	3 8"	73
W10X22	3/4"DIA.X 4 1/2"	16"	8"	1 1/2"	1"	6"	1 1/2"	13/32"	16"	8"	1 1/2"	1"	6"	13/32"	28 GAUGE	3/4"DIA.X2 1/2"	5 3/4"	6"	7"	1"	1 3/4"	3/4"	3 1/2"	13/32"	3 8"	119
W10X26	3/4"DIA.X 5 1/2"	16 1/2"	8"	1 1/2"	1"	6"	1 3/4"	13/32"	16 1/2"	8"	1 1/2"	1"	6"	13/32"	28 GAUGE	3/4"DIA.X2 3/4"	5 3/4"	6"	7"	1"	1 3/4"	3/4"	3 1/2"	13/32"	5 8"	140
W12X26	3/4"DIA.X 5 1/2"	18 1/2"	9"	1 1/2"	1"	7"	1 3/4"	13/32"	18 1/2"	9"	1 1/2"	1"	7"	13/32"	28 GAUGE	3/4"DIA.X2 3/4"	6 1/2"	6"	7"	1"	1 3/4"	3/4"	3 1/2"	13/32"	5 8"	176
W14X30	1"DIA.X 6"	22"	9"	2"	1 1/2"	6"	2"	1 1/2"	22"	9"	2"	1 1/2"	6"	1 1/2"	28 GAUGE	1"DIA.X 3"	6 3/4"	7"	8"	1 1/4"	2"	1"	4"	1 1/2"	5 8"	205
W16X31	1"DIA.X 6"	24"	9"	2"	1 1/2"	6"	2"	1 1/2"	24"	9"	2"	1 1/2"	6"	1 1/2"	28 GAUGE	1"DIA.X 3"	5 1/2"	7"	8"	1 1/4"	2"	1"	4"	1 1/2"	3 8"	223
W18X35	1"DIA.X 6"	25"	9"	2"	1 1/2"	6"	2"	1 1/2"	25"	9"	2"	1 1/2"	6"	1 1/2"	28 GAUGE	1"DIA.X 3"	6"	7"	8"	1 1/4"	2"	1"	4"	1 1/2"	3 8"	243
W18X40	1"DIA.X 6 1/2"	26"	9"	2"	1 1/2"	6"	2 1/4"	1 1/2"	26"	9"	2"	1 1/2"	6"	1 1/2"	28 GAUGE	1"DIA.X3 1/2"	6"	7"	8"	1 1/4"	2"	1"	4"	1 1/2"	3 8"	278
W21X44	1"DIA.X 7"	29"	9"	2"	1 1/2"	6"	2 1/2"	1 1/2"	29"	9"	2"	1 1/2"	6"	1 1/2"	28 GAUGE	1"DIA.X3 1/2"	6 1/2"	7"	8"	1 1/4"	2"	1"	4"	1 1/2"	3 8"	310



FOUNDATION DATA *			
FOOTING DIAMETER	REINFORCEMENT	SPIRAL BAR	SPACED BAR
1'-6"	8 # 6 BARS	#3 BAR, 6" PITCH	#3 BAR, 6" SPACE
2'	8 # 7 BARS	#3 BAR, 6" PITCH	#3 BAR, 6" SPACE
2'-6"	8 # 9 BARS	#3 BAR, 6" PITCH	#3 BAR, 6" SPACE
3'	8 # 11 BARS	#3 BAR, 6" PITCH	#3 BAR, 6" SPACE
3'-6"	8 # 12 BARS	#3 BAR, 6" PITCH	#3 BAR, 6" SPACE
4'	8 # 14 BARS	#3 BAR, 6" PITCH	#3 BAR, 6" SPACE

* FOUNDATION DIMENSIONS ARE SHOWN IN PLANS

STATE OF NORTH CAROLINA
DEPT. OF TRANSPORTATION
DIVISION OF HIGHWAYS
RALEIGH, N.C.

ENGLISH DETAIL DRAWING FOR
GROUND MOUNTED SIGN SUPPORTS

SHEET 2 OF 3
903D10

**REVISED SIGNING
ROADWAY STANDARD DRAWING**

**REVISED
ROADWAY STANDARD DRAWING**



DOCUMENT NOT CONSIDERED FINAL
UNLESS ALL SIGNATURES COMPLETED

TIP NO. SHEET NO.

DocuSign by: *Matthew V. Springer*

APPROVED: 6/23/2021

DATE: 6/23/2021

SEAL

STATE OF NORTH CAROLINA
DEPT. OF TRANSPORTATION
DIVISION OF HIGHWAYS
RALEIGH, N.C.

6-21

ENGLISH DETAIL DRAWING FOR
MOUNTING OF
TYPE 'D', 'E', AND 'F' SIGNS
ON 'U' CHANNEL POSTS

SHEET 1 OF 2
904D50

FRAMING AND CROSS-BRACING DETAILS
TYPE "F" SIGNS

FRAMING AND CROSS BRACE DETAILS
FOR COMBINATION TYPE "D" & "E" SIGNS
WIDE SIDE OF CROSS BRACE GOES TO BACK OF SIGN

FRAMING AND CROSS BRACE DETAILS
FOR COMBINATION TYPE "D" & "E" SIGNS
WIDE SIDE OF FLANGE TO BACK OF "F" SIGN

NOTES:

- ERECT TYPE "D", "E", AND "F" SIGNS ON FREEWAYS WITH THE NEAR EDGE OF THE SIGN 20 FT. FROM THE TRAVEL LANE. ERECT ALL OTHER "D", "E", AND "F" SIGNS WITH THE NEAR EDGE OF THE SIGN AT THE EDGE OF THE SHOULDER BREAK (6 FT. MINIMUM CLEARANCE, 12 FT. DESIRABLE, FROM THE EDGE OF TRAVEL LANE), OR AS DIMENSIONED ON PLAN SHEETS.
- ERECT TYPE "D", "E", AND "F" SIGNS WITH THE BOTTOM OF SIGN ASSEMBLY AT LEAST 7 FT. ABOVE THE EDGE OF THE TRAVEL LANE ON ROADS WITH 2 OR MORE LANES IN THE SAME DIRECTION AND AT LEAST 5 FT. ON OTHER ROUTES. THE VERTICAL CLEARANCE IS 7 FT. WHERE REQUIRED FOR PEDESTRIAN TRAFFIC AND/OR PARKED VEHICLES.
- THE VERTICAL DIMENSION BETWEEN MOUNTING HOLE CENTERS ON ALL TYPES "D", "E", AND "F" SIGNS IS 30" MAXIMUM. THE VERTICAL AND HORIZONTAL DIMENSIONS BETWEEN MOUNTING HOLES IS TO THE WHOLE INCH. EACH SIGN PANEL HAS A MINIMUM OF 2 BOLTS PER SUPPORT.
- ATTACH SIGN W/ 5/16" HEX HEAD BOLT, NYLON WASHER, SHIM, FLAT WASHER, LOCK WASHER, HEX NUT NO BUCKLING OF THE SIGN WILL BE PERMITTED. SEE ASSEMBLY DETAIL SHEET# 2 OF 904.50.
- FURNISH AND INSTALL CROSS-BRACING AS SHOWN IN DETAIL. PAINT ENDS OF CROSS BRACES W/ APPROVED. ZINC PAINT
- INSTALL POST AND CROSS-BRACING WITH THE WIDE SIDE OF THE FLANGE TOWARD THE BACK OF SIGN(S) FOR COMBINATION TYPE "D" AND "F" SIGNS.
- THE SHIELD HEIGHTS IN THESE ASSEMBLIES CAN NOT BE LARGER THAN 24".
- IF SIGN ASSEMBLIES REQUIRE MORE THAN TWO U-CHANNEL SUPPORTS, THE SUPPORTS SHALL BE PLACED A MINIMUM OF 4 FT. BETWEEN POSTS. NO MORE THAN TWO POSTS SHALL FALL WITHIN 7 FT. PATH, OR THE SIGN ASSEMBLY MUST BE PLACED BEHIND BARRIER PROTECTION.

TYPICAL SIGN SHAPES AND COMBINATIONS

STATE OF NORTH CAROLINA
DEPT. OF TRANSPORTATION
DIVISION OF HIGHWAYS
RALEIGH, N.C.

6-21

ENGLISH DETAIL DRAWING FOR
MOUNTING OF
TYPE 'D', 'E', AND 'F' SIGNS
ON 'U' CHANNEL POSTS

SHEET 1 OF 2
904D50

REVISED SIGNING
ROADWAY STANDARD DRAWING

REVISED
ROADWAY STANDARD DRAWING

3/14/2023
G:\308350_DDC\2\RC-U-2729\TrafficControl\Signing\CADD\Signing Layout Plans\U-2729_Sgn_SGN_ID.dgn
User:DL85144

S:\AS\Standards Group\Standards and Drawings\Drawings\2018 Standard Drawings\Division 9 Final\0904.50_sgn_sht101_channel_post_6-21.dgn
User:dstokes

TIP NO. U-2729	SHEET NO. SIGN-2
APPROVED: _____	
DATE: _____	
SEAL	
DOCUMENT NOT CONSIDERED FINAL UNLESS ALL SIGNATURES COMPLETED	

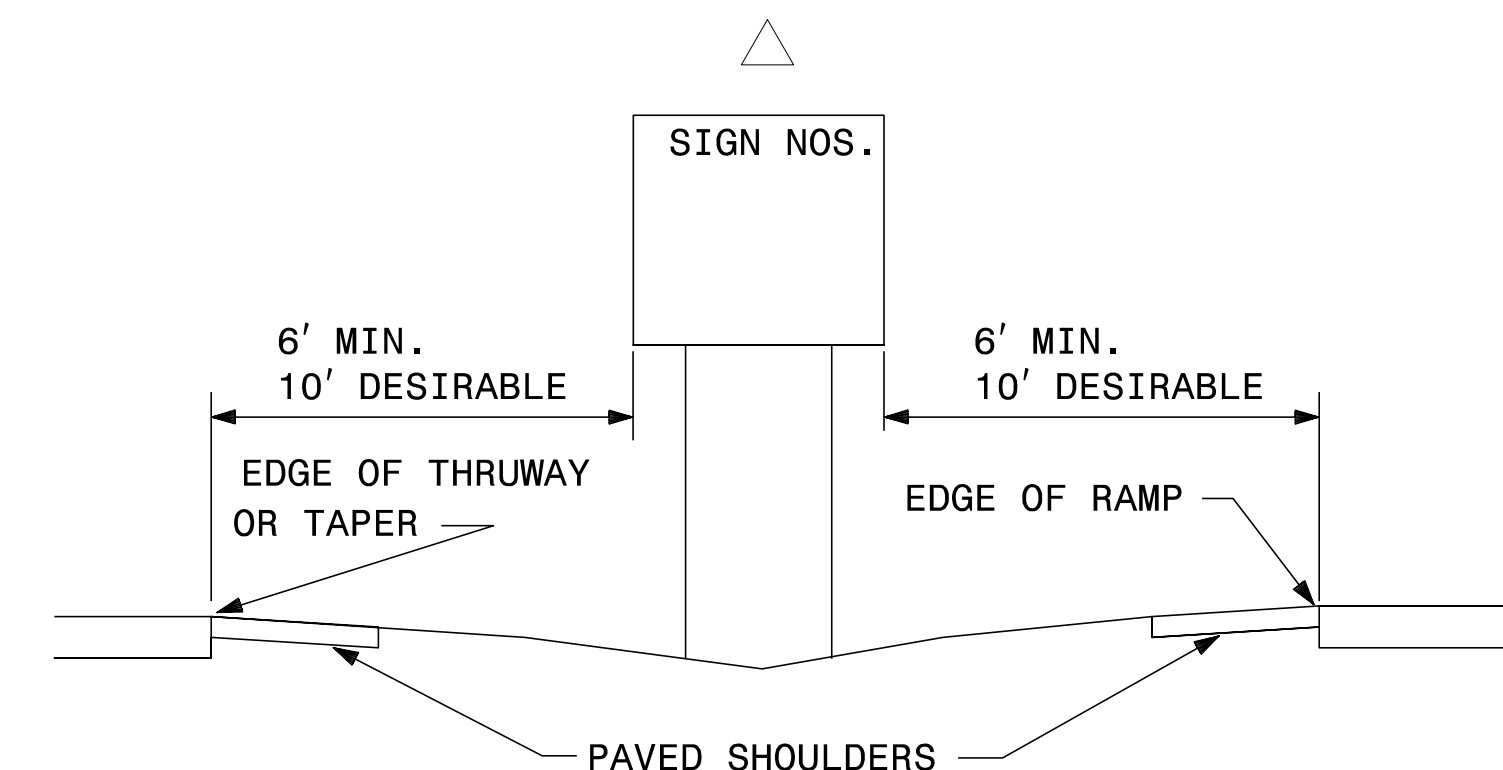
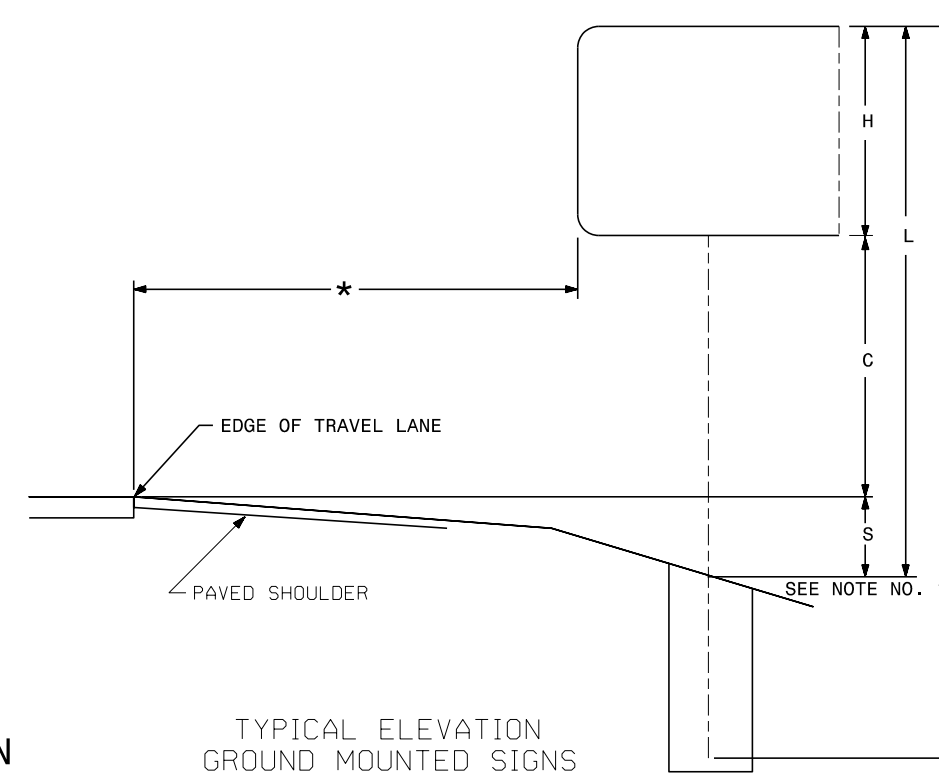
Version: 3.1 Posted: 6/2/2017

NUMBER	SIGN			ROADWAY STATION	NUMBER OF SUPPORTS	BEAM SECTION	SUPPORT TYPE BA or S	OMNI COUPLER	ATTACHMENT METHOD	MOUNTING METHOD	HORIZONTAL CLEARANCE* (ft.)	SUPPORT SPACING	LENGTH (ft)			LEFT SUPPORT (ft)			CENTER SUPPORT (ft)			RIGHT SUPPORT (ft)			SUPPORT WEIGHTS		FOOTINGS				FIELD VERIFIED SEE NOTE 2 (mm/dd/yy)		
	TYPE	SIZE (in.)											SNS HT "H"	MTG HT "C"	EMBED-MENT	S	L	LENGTH	S	L	LENGTH	S	L	LENGTH	B/A (lbs.)	SIMPLE (lbs.)	DIAMETER (ft.)	DEPTH (ft.)	REINFORCED (c.y.)	PLAIN (c.y.)			
		w	x																													h	
101	A	102	x	102	-L- Sta 29+00	2	W6x9	BA	N/A	N/A	N/A	13.00	4.98	8.50	7.00	3.0	0.11	15.61	18.61	0.00	0.00	0.00	1.36	16.86	19.86	410.23	0	1.5	3.5	0.46	0.00	_____	
102	A	96	x	54	-L- Sta 36+50	2	S3x5.7	BA	N/A	N/A	N/A	13.00	4.69	4.50	7.00	2.5	0.11	11.61	14.11	0.00	0.00	0.00	1.29	12.79	15.29	203.58	0	1.0	3	0.00	0.17	_____	
103	A	96	x	102	-L- Sta 39+00	2	W6x9	BA	N/A	N/A	N/A	13.00	4.69	8.50	7.00	3.0	0.19	15.69	18.69	0.00	0.00	0.00	1.76	17.26	20.26	414.55	0	1.5	3.5	0.46	0.00	_____	
104	A	102	x	54	-L- Sta 32+00	2	S4x7.7	S	N/A	N/A	N/A	18.00	4.98	4.50	7.00	3.0	2.16	13.66	16.66	0.00	0.00	0.00	4.65	16.15	19.15	0.00	275.737	1.0	3.5	0.00	0.20	_____	
105A	B	132	x	30	-Y4- Sta 67+00	2	W6x16	S	N/A	1-R	N/A	28.00	9.96	7.00	11.50	4.0	-1.89	16.61	20.61	0.00	0.00	0.00	-7.30	11.20	15.20	0.00	572.96	1.5	4.5	0.59	0.00	_____	
105B	A	204	x	84																													
901	B	90	x	48	-RPA- Sta. 20+00	2	S3x5.7	BA	N/A	N/A	N/A	18.00	4.40	4.00	7.00	2.5	0.00	11.00	13.50	0.00	0.00	0.00	1.53	12.53	15.03	198.62	0	1.0	3	0.00	0.17	_____	
902	A	90	x	72	-RPA- Sta. 18+50	2	S4x7.7	BA	N/A	N/A	N/A	18.00	4.40	6.00	7.00	3.0	2.22	15.22	18.22	0.00	0.00	0.00	4.43	17.43	20.43	337.61	0	1.0	3.5	0.00	0.20	_____	
903	A	90	x	96	-RPA- Sta. 17+00	2	W6x12	BA	N/A	N/A	N/A	18.00	4.40	8.00	7.00	3.0	2.57	17.57	20.57	0.00	0.00	0.00	4.75	19.75	22.75	597.84	0	1.5	3.5	0.46	0.00	_____	
904A	A	180	x	138	-Y4- Sta. 65+34	2	W8x18	S	N/A	N/A	N/A	31.00	8.79	13.50	7.00	4.5	2.50	23.00	27.50	0.00	0.00	0.00	3.11	23.61	28.11	0.00	1000.98	2.0	5	1.16	0.00	_____	
904B	B	72	x	24																													
905	B	90	x	48	-RPB- Sta. 25+00	2	S3x5.7	BA	N/A	N/A	N/A	18.00	4.40	4.00	7.00	2.5	1.32	12.32	14.82	0.00	0.00	0.00	2.42	13.42	15.92	211.22	0	1.0	3	0.00	0.17	_____	
906	A	90	x	72	-RPB- Sta. 23+50	2	S4x7.7	BA	N/A	N/A	N/A	18.00	4.40	6.00	7.00	3.0	1.34	14.34	17.34	0.00	0.00	0.00	2.45	15.45	18.45	315.58	0	1.0	3.5	0.00	0.20	_____	
907	A	90	x	96	-RPB- Sta. 22+00	2	W6x9	BA	N/A	N/A	N/A	18.00	4.40	8.00	7.00	3.0	1.75	16.75	19.75	0.00	0.00	0.00	2.28	17.28	20.28	424.27	0	1.5	3.5	0.46	0.00	_____	

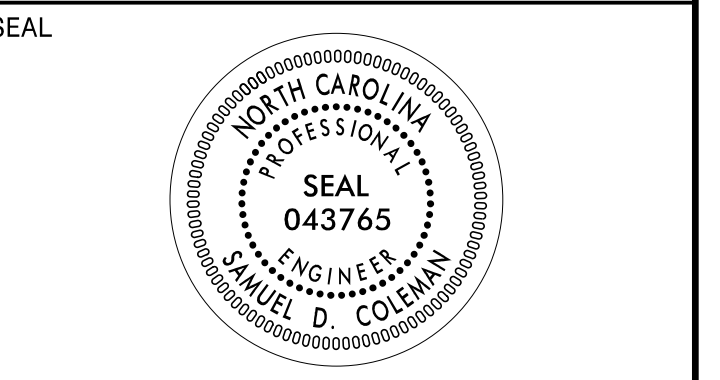
TOTAL	3113.50	TOTAL	1849.68	TOTAL	3.59	TOTAL	1.13
USE:	3114.00	USE:	1850.00	USE:	4.00	USE:	2.00

NOTES

- DIMENSION "S" REPRESENTS AN INCREASE (+), OR A DECREASE (-) IN POLE LENGTH, RELATIVE TO THE ELEVATION OF THE EDGE OF TRAVEL LANE.
- FIELD VERIFICATIONS SHALL BE REQUIRED FOR ALL SUPPORTS, SEE (*) ARTICLE 903-3. FABRICATORS SHALL BE AISC CERTIFIED IN CATEGORY 1, SEE (*) ARTICLE 1072-1. (*) = N.C.D.O.T. STANDARD SPECIFICATIONS FOR ROADS AND STRUCTURES
- PLAN LOCATIONS FOR EXISTING UTILITIES ARE BASED ON THE BEST AVAILABLE INFORMATION AND, THEREFORE MAY NOT BE PRECISELY ACCURATE. THEREFORE, IT IS INCUMBENT UPON THE CONTRACTOR TO DETERMINE THE EXACT LOCATION OF UTILITIES BEFORE BEGINNING WORK IN A LOCATION.



TYPE "A" AND TYPE "B" SIGN SUPPORT INFORMATION



DOCUMENT NOT CONSIDERED FINAL UNLESS ALL SIGNATURES COMPLETED

SIGN NUMBER: 101 BACKG COLOR: Green / Green
TYPE: A COPY COLOR: White
QUANTITY: 1

SYMBOL	X	Y	WID	HT
M1_4	28	71.5	24	24
AR_Type A	12	70.3	8	12.6
AR_Type A	9.5	22.1	8	12.6
M1_4	30.1	21	24	24

TOTAL AREA: 72.3 Sq.Ft.
BORDER TYPE: FLUSH
RECESS: 0"
WIDTH: 1"
RADII: 6"
NO. Z BARS: 3
LENGTH: 94.0
MAT'L: 0.125" (3.2 mm) ALUMINUM

DESIGN BY: S COLEMAN CHECKED BY: _____ Aug 28, 2019
PROJECT ID: U-2729 LOCATION: WINSTON-SALEM DIV: 9

Spacing Factor is 1 unless specified otherwise

LETTER POSITIONS

Letter spacings are to start of next letter

	N	O	R	T	H																Series/Size	Text Length
	60	6.5	1.2	6.4	5.5	4.9	12														E 2000	30
		M	o	u	n	t	A	i	r	y											D 2000	56.9
	30.6	7.7	6.1	6.3	5.5	3.2	8	7.8	2.9	3.4	6	14.6								E 2000	30.4	
		S	o	u	t	h															D 2000	46.9
	62.1	6.5	1.2	6.4	5.9	5.5	4.9	9.5												E 2000	30.4	
		L	e	x	i	n	g	t	o	n											D 2000	46.9
	37.9	5.7	5	7	2.9	5.9	5.7	3.8	6.2	4.7	17.3									E 2000	30.4	

FILENAME: U-2729 Sign Designs NORTH CAROLINA D.O.T. SIGN DETAIL

SIGN NUMBER: 103 BACKG COLOR: Green / Green
TYPE: A COPY COLOR: White
QUANTITY: 1

SYMBOL	X	Y	WID	HT
M1_4	24.8	71.6	24	24
AR_Type A	8.8	70.3	8	12.6
M1_4	6.7	21.1	24	24
AR_Type A	76.7	22.1	8	12.6

TOTAL AREA: 68.0 Sq.Ft.
BORDER TYPE: FLUSH
RECESS: 0"
WIDTH: 1"
RADII: 6"
NO. Z BARS: 3
LENGTH: 88.0
MAT'L: 0.125" (3.2 mm) ALUMINUM

DESIGN BY: S COLEMAN CHECKED BY: _____ Aug 28, 2019
PROJECT ID: U-2729 LOCATION: WINSTON-SALEM DIV: 9

Spacing Factor is 1 unless specified otherwise

LETTER POSITIONS

Letter spacings are to start of next letter

	S	O	U	T	H																Series/Size	Text Length
	56.8	6.5	1.2	6.4	5.9	5.5	4.9	8.8													E 2000	30.4
		L	e	x	i	n	g	t	o	n											D 2000	46.9
	32.6	5.7	5	7	2.9	5.9	5.7	3.8	6.2	4.7	16.6									E 2000	30	
		N	o	r	t	h															D 2000	56.9
	38.7	6.5	1.2	6.4	5.5	5.5	4.9	27.3												E 2000	30	
		M	o	u	n	t	A	i	r	y											D 2000	56.9
	9.3	7.7	6.1	6.3	5.5	3.2	8	7.8	2.9	3.4	6	29.9								E 2000	30.4	

FILENAME: U-2729 Sign Designs NORTH CAROLINA D.O.T. SIGN DETAIL

SIGN NUMBER: 104 BACKG COLOR: Green
TYPE: B COPY COLOR: White
QUANTITY: 1

SYMBOL	X	Y	WID	HT
M1_4	9.5	22.3	24	24
AR_Type A	79.9	23.3	8	12.6

TOTAL AREA: 38.3 Sq.Ft.
BORDER TYPE: FLUSH
RECESS: 0"
WIDTH: 1"
RADII: 6"
NO. Z BARS: 2
LENGTH: 94.0
MAT'L: 0.125" (3.2 mm) ALUMINUM

DESIGN BY: S COLEMAN CHECKED BY: _____ Aug 28, 2019
PROJECT ID: U-2729 LOCATION: WINSTON-SALEM DIV: 9

Spacing Factor is 1 unless specified otherwise

LETTER POSITIONS

Letter spacings are to start of next letter

	S	O	U	T	H																Series/Size	Text Length
	41.5	6.5	1.2	6.4	5.9	5.5	4.9	30.1													E 2000	30.4
		L	e	x	i	n	g	t	o	n											D 2000	46.9
	17.3	5.7	5	7	2.9	5.9	5.7	3.8	6.2	4.7	37.9									E 2000	30.4	

FILENAME: U-2729 Sign Designs NORTH CAROLINA D.O.T. SIGN DETAIL

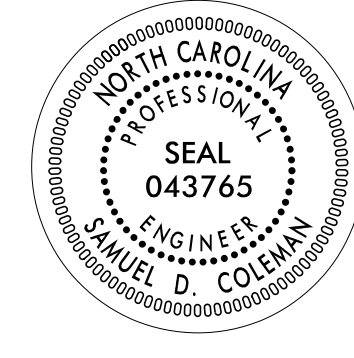
3/14/2023 3:30:35 PM G:\303350_DDC\2\NRC-U-2729\TrafficControl\Signing\CADD\Signing\Layout Plans\U-2729_Sgn-SGN_3.dgn User:COL85144

SIGN DESIGNS

APPROVED: _____

DATE: _____

SEAL



**DOCUMENT NOT CONSIDERED FINAL
UNLESS ALL SIGNATURES COMPLETED**

SIGN NUMBER: 102 TYPE: B QUANTITY: 1 SIGN WIDTH: 8'-0" HEIGHT: 4'-6" TOTAL AREA: 36.0 Sq.Ft. BORDER TYPE: FLUSH RECESS: 0" WIDTH: 1" RADII: 6" NO. Z BARS: 2 LENGTH: 88.0	BACKG COLOR: Green COPY COLOR: White SYMBOL X Y WID HT AR_Type A 6.7 23.3 8 12.6 M1_4 27.3 22.3 24 24	DESIGN BY: S COLEMAN PROJECT ID: U-2729 LOCATION: WINSTON-SALEM CHECKED BY: Aug 28, 2019 DIV: 9
--	---	--

USE NOTES: 1,2,3

- Legend and border(except those that are colored black) shall be direct applied Grade C sheeting.
- Background shall be Grade C reflective sheeting.
- Shields; A, B, and C type arrows shall be on 0.032" (0.8mm) aluminum with Grade C reflective sheeting and demountable.
- Bottom panel shall be yellow Grade C sheeting. Legend shall be direct applied black non-reflective sheeting. Arrow shall be on 0.032" aluminum, black non-reflective sheeting an demountable. Yellow panel is:

LETTER POSITIONS

Letter spacings are to start of next letter

	N	O	R	T	H																Series/Size Text Length
	59.3	6.5	1.2	6.4	5.5	5.5	4.9	6.7													E 2000 30
	M	o	u	n	t	A	i	r	y												D 2000 56.9
	29.9	7.7	6.1	6.3	5.5	3.2	8	7.8	2.9	3.4	6	9.3									

FILENAME: U-2729 Sign Designs NORTH CAROLINA D.O.T. SIGN DETAIL

SIGN NUMBER: 301 TYPE: D QUANTITY: 1 SIGN WIDTH: 4'-6" HEIGHT: 4'-0" TOTAL AREA: 18.0 Sq.Ft. BORDER TYPE: FLUSH RECESS: 0" WIDTH: 1" RADII: 3" NO. Z BARS: 0 LENGTH: 0	BACKG COLOR: Green COPY COLOR: White SYMBOL X Y WID HT M1_4 15 17.3 24 24	DESIGN BY: S COLEMAN PROJECT ID: U-2729 LOCATION: WINSTON-SALEM CHECKED BY: Aug 07, 2019 DIV: 9
---	--	--

USE NOTES: 1,2

- Legend and border(except those that are colored black) shall be direct applied Grade C sheeting.
- Background shall be Grade C reflective sheeting.

LETTER POSITIONS

Letter spacings are to start of next letter

	K	E	E	P	L	E	F	T													Series/Size Text Length
	6	5.2	4.7	4.7	4.1	6	4.6	4.7	4.1	3.7	6										D 2000 41.9

FILENAME: U-2729 Sign Designs NORTH CAROLINA D.O.T. SIGN DETAIL

SIGN NUMBER: 302 TYPE: D QUANTITY: 1 SIGN WIDTH: 4'-6" HEIGHT: 4'-0" TOTAL AREA: 18.0 Sq.Ft. BORDER TYPE: FLUSH RECESS: 0" WIDTH: 1" RADII: 3" NO. Z BARS: 0 LENGTH: 0	BACKG COLOR: Green COPY COLOR: White SYMBOL X Y WID HT M1_4 15 17.3 24 24	DESIGN BY: S COLEMAN PROJECT ID: U-2729 LOCATION: WINSTON-SALEM CHECKED BY: Aug 07, 2019 DIV: 9
---	--	--

USE NOTES: 1,2

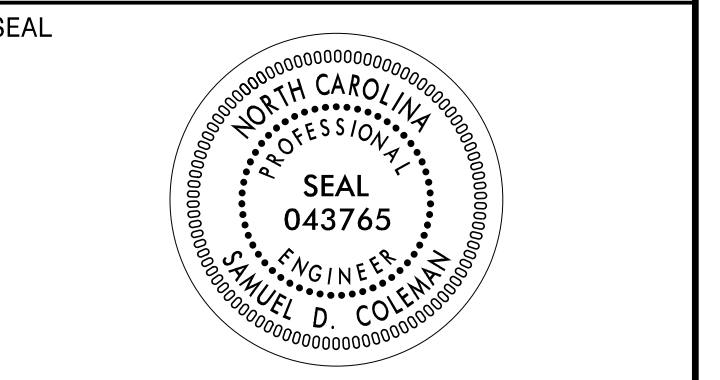
- Legend and border(except those that are colored black) shall be direct applied Grade C sheeting.
- Background shall be Grade C reflective sheeting.

LETTER POSITIONS

Letter spacings are to start of next letter

	K	E	E	P	R	I	G	H	T												Series/Size Text Length
	4.6	5.2	4.7	4.7	4.1	4.5	5.1	2.3	5.4	5	3.7	4.6									D 2000 44.8

FILENAME: U-2729 Sign Designs NORTH CAROLINA D.O.T. SIGN DETAIL



**DOCUMENT NOT CONSIDERED FINAL
 UNLESS ALL SIGNATURES COMPLETED**

SIGN NUMBER: 105B TYPE: A QUANTITY: 1 SIGN WIDTH: 17'-0" HEIGHT: 7'-0" TOTAL AREA: 119.0 Sq.Ft. BORDER TYPE: FLUSH RECESS: 0" WIDTH: 2" RADII: 11" NO. Z BARS: 2 LENGTH: 196.0	BACKG COLOR: Green COPY COLOR: White <table border="1"> <tr> <th>SYMBOL</th> <th>X</th> <th>Y</th> <th>WID</th> <th>HT</th> </tr> <tr> <td>AR_Type A</td> <td>88.2</td> <td>14.2</td> <td>22.2</td> <td>35</td> </tr> </table> MAT'L: 0.125" (3.2 mm) ALUMINUM	SYMBOL	X	Y	WID	HT	AR_Type A	88.2	14.2	22.2	35	DESIGN BY: S COLEMAN PROJECT ID: U-2729 CHECKED BY: LOCATION: WINSTON-SALEM Nov 14, 2022 DIV: 9
SYMBOL	X	Y	WID	HT								
AR_Type A	88.2	14.2	22.2	35								

USE NOTES: 1,2,3

- Legend and border (except those that are colored black) shall be direct applied Grade C sheeting.
- Background shall be Grade C reflective sheeting.
- Shields; A, B, and C type arrows shall be on 0.032" (0.8mm) aluminum with Grade C reflective sheeting and demountable.
- Bottom panel shall be yellow Grade C sheeting. Legend shall be direct applied black non-reflective sheeting. Arrow shall be on 0.032" aluminum, black non-reflective sheeting and demountable. Yellow panel is:

Spacing Factor is 1 unless specified otherwise

Letter positions													Series/Size
Letter spacings are to start of next letter													Text Length
	H	a	n	e	s	M	i	l	l	R	d		EM 2000
	14.6	17	17	15.5	13.8	20.3	9.6	9.6	3.2	16	15.8	10.6	14.6
													174.9

FILENAME: U-2729 Sign Designs NORTH CAROLINA D.O.T. SIGN DETAIL

SIGN NUMBER: 105A TYPE: B QUANTITY: 1 SIGN WIDTH: 11'-0" HEIGHT: 2'-6" TOTAL AREA: 27.5 Sq.Ft. BORDER TYPE: FLUSH RECESS: 0" WIDTH: 2" RADII: 3" NO. Z BARS: 2 LENGTH: 124.0	BACKG COLOR: Green COPY COLOR: White <table border="1"> <tr> <th>SYMBOL</th> <th>X</th> <th>Y</th> <th>WID</th> <th>HT</th> </tr> </table> MAT'L: 0.125" (3.2 mm) ALUMINUM	SYMBOL	X	Y	WID	HT	DESIGN BY: S COLEMAN PROJECT ID: U-2729 CHECKED BY: LOCATION: WINSTON-SALEM Nov 15, 2022 DIV: 9
SYMBOL	X	Y	WID	HT			

USE NOTES: 1,2

- Legend and border (except those that are colored black) shall be direct applied Grade C sheeting.
- Background shall be Grade C reflective sheeting.
- Shields; A, B, and C type arrows shall be on 0.032" (0.8mm) aluminum with Grade C reflective sheeting and demountable.
- Bottom panel shall be yellow Grade C sheeting. Legend shall be direct applied black non-reflective sheeting. Arrow shall be on 0.032" aluminum, black non-reflective sheeting and demountable. Yellow panel is:

Spacing Factor for the word "EXIT" is 1.2
 Spacing Factor is 1 unless specified otherwise


Letter positions													Series/Size
Letter spacings are to start of next letter													Text Length
	E	X	I	T									E 2000
	28.7	9.2	11.1	7.5	71.7								31.6
													E 2000
													28

FILENAME: U-2729 Sign Designs NORTH CAROLINA D.O.T. SIGN DETAIL

3/14/2023
 G:\308350_DDC\2\NRC-U-2729\TrafficControl\Signing\CADD\Signing Layout Plans\U-2729_Sgn-SGN_3b.dgn
 User:COL85144

SIGN DESIGNS

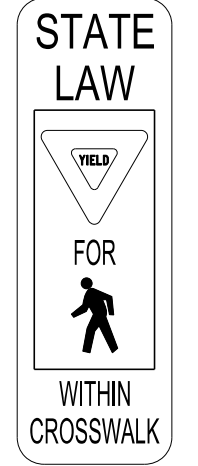
401 QUANTITY REQ'D 8



36" X 36"
W11-2

ONE "U" POST PER SIGN

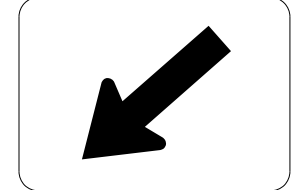
402 QUANTITY REQ'D 4



12" X 36"
R1-6

MOUNTED BACK TO BACK IN 2 INSTALLATIONS
ONE "U" POST PER SIGN

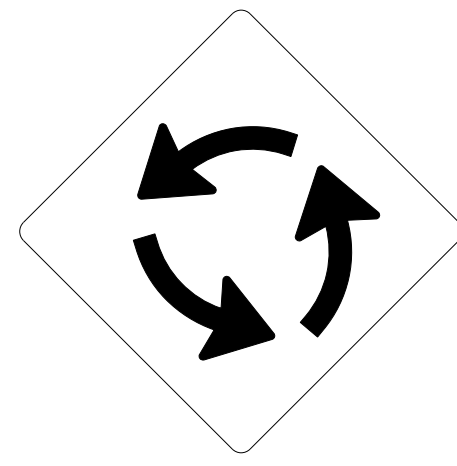
403 QUANTITY REQ'D 8



24" X 12"
W16-7L

MOUNTED BELOW SIGN 401 IN 8 INSTALLATIONS

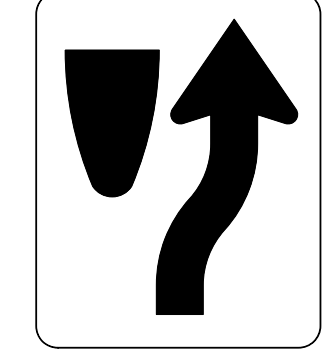
404 QUANTITY REQ'D 3



30" X 30"
W2-6

ONE "U" POST PER SIGN

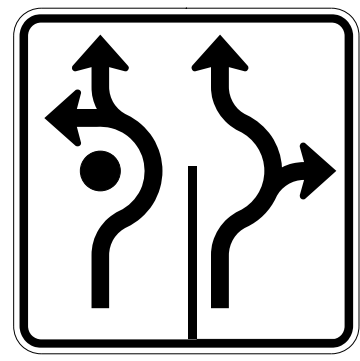
405 QUANTITY REQ'D 14



18" X 30"
R4-7c

ONE "U" POST PER SIGN

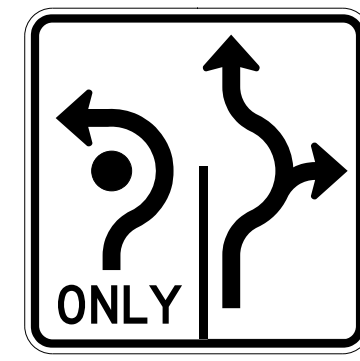
406 QUANTITY REQ'D 1



36" X 36"
R3-8

ONE "U" POST PER SIGN

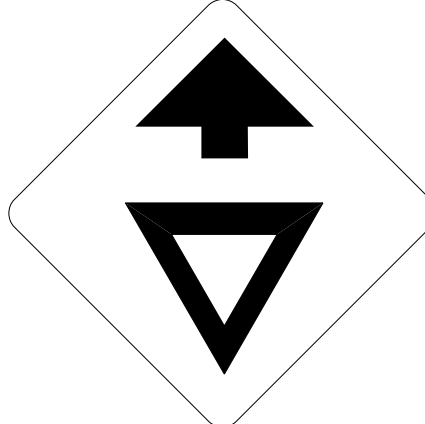
407 QUANTITY REQ'D 1



36" X 36"
R3-8

ONE "U" POST PER SIGN

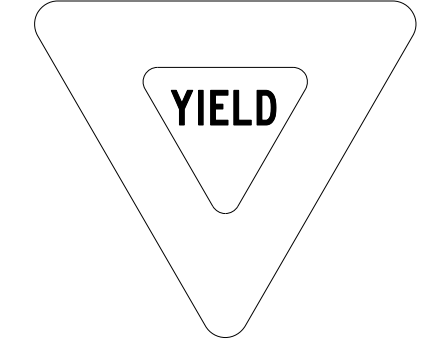
408 QUANTITY REQ'D 3



30" X 30"
W3-2

ONE "U" POST PER SIGN

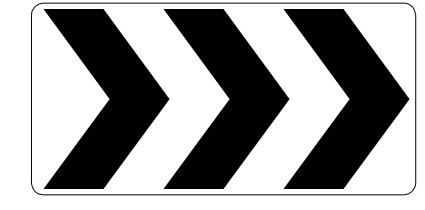
409 QUANTITY REQ'D 8



36" X 36" X 36"
R1-2

ONE "U" POST PER SIGN


410 QUANTITY REQ'D 4



48" X 24"
R6-4A

ONE "U" POST PER SIGN


411 QUANTITY REQ'D 1



36" X 36"
R3-7

ONE "U" POST PER SIGN


412 QUANTITY REQ'D 1



30" X 36"
R2-1

ONE "U" POST PER SIGN


413 QUANTITY REQ'D 2



36" X 36"
R5-1

ONE "U" POST PER SIGN


414 QUANTITY REQ'D 4



36" X 24"
R5-1A

ONE "U" POST PER SIGN


415 QUANTITY REQ'D 6



54" X 18"
R6-1

MOUNTED ABOVE 418 IN 1 INSTALLATION
MOUNTED BACK TO BACK IN 2 INSTALLATIONS
TWO "U" POSTS PER SIGN


416 QUANTITY REQ'D 1



36" X 36"
W3-5

ONE "U" POST PER SIGN

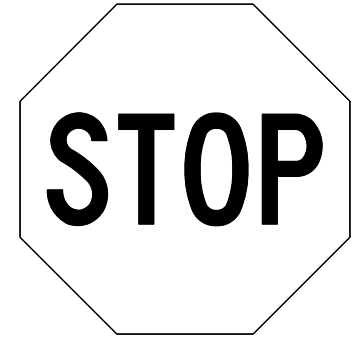
417 QUANTITY REQ'D 3



30" X 36"
R2-1

ONE "U" POST PER SIGN

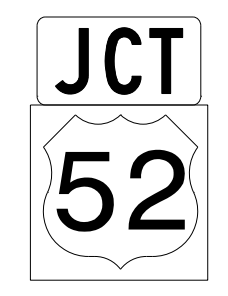
418 QUANTITY REQ'D 4



30" X 30"
R1-1

ONE "U" POST PER SIGN

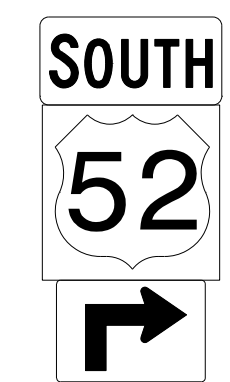
501 503



1 - 21" X 15"
1 - 24" X 24"

ONE "U" POST PER SIGN


502



1 - 24" X 12"
1 - 24" X 24"
1 - 21" X 15"

ONE "U" POST PER SIGN

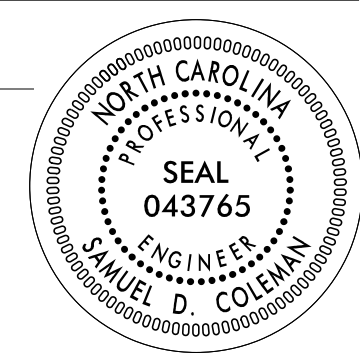
504



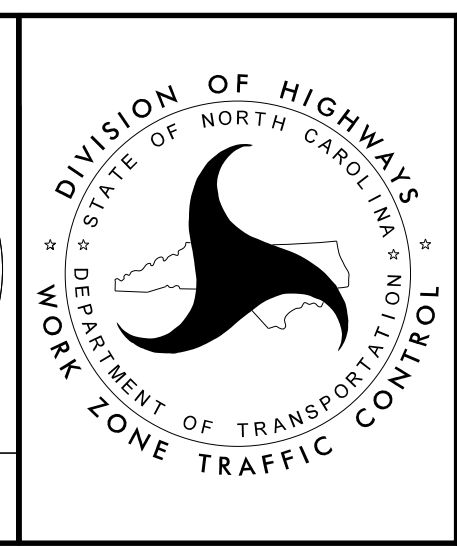
1 - 24" X 12"
1 - 24" X 24"
1 - 21" X 15"

ONE "U" POST PER SIGN

APPROVED: _____
 DATE: _____



**DOCUMENT NOT CONSIDERED FINAL
UNLESS ALL SIGNATURES COMPLETED**

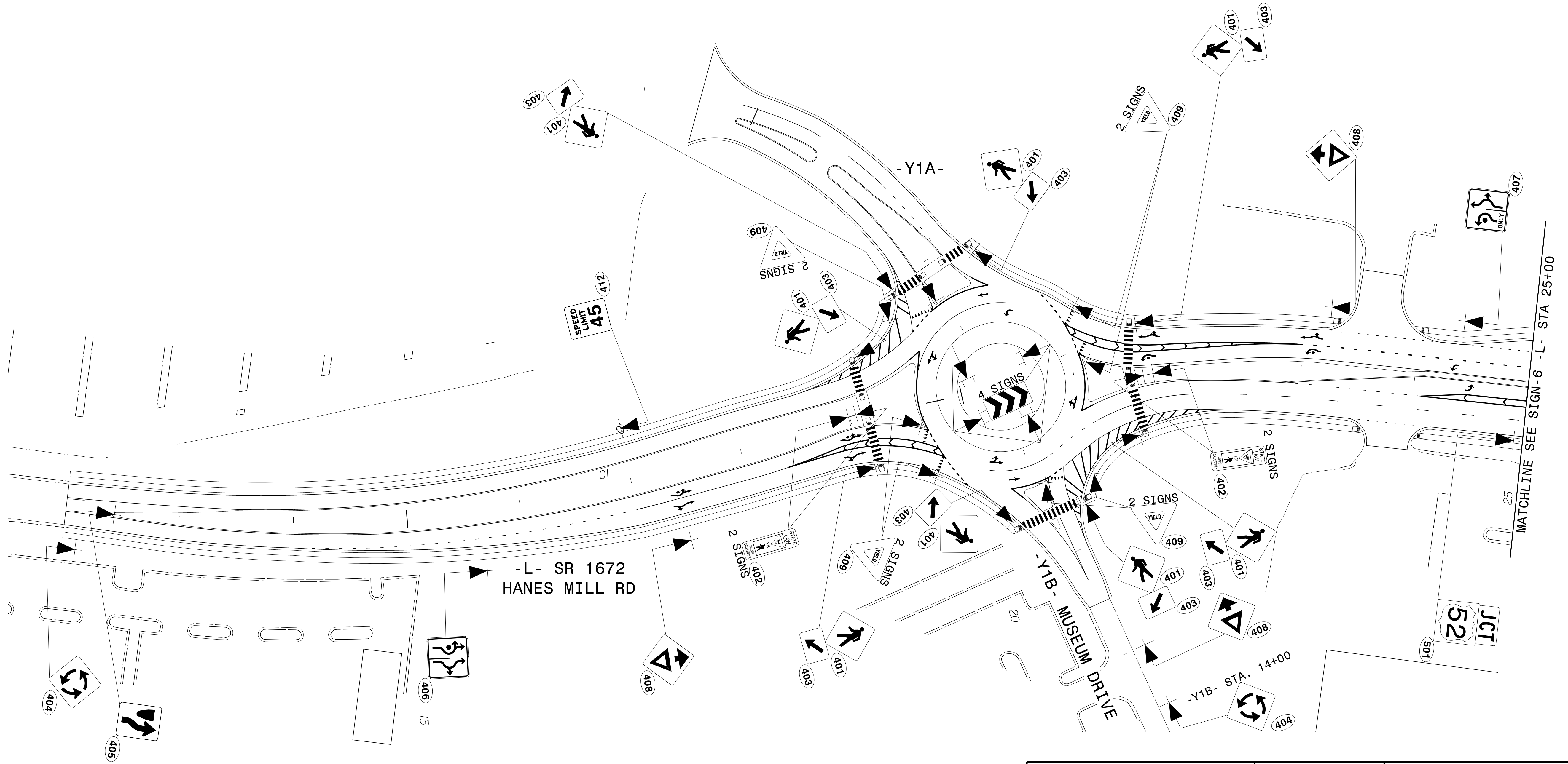
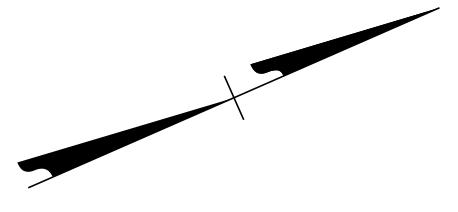


TYPE "E" AND "F" SIGNS

PROJ. REFERENCE NO.	SHEET NO.
U-2729	SIGN-5

PLANS PREPARED FOR THE NCDOT BY:

M MOTT MACDONALD I & E, LLC
 1101 HAYNES STREET, SUITE 101
 RALEIGH, NC 27604
M MOTT MACDONALD
 NC LICENSE NO. F-0669



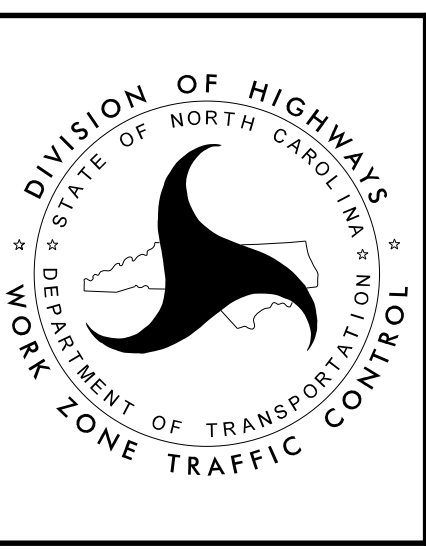
3/14/2023
 G:\308350_DDC\2\ARC-U-2729\TrafficControl\Signing\CADD\Signing Layout Plans\U-2729_Sgn_SGN_5.dgn
 User:COL85144

APPROVED: _____

DATE: _____

SEAL
 043765
 ENGINEER
 SAMUEL D. COLEMAN

**DOCUMENT NOT CONSIDERED FINAL
UNLESS ALL SIGNATURES COMPLETED**

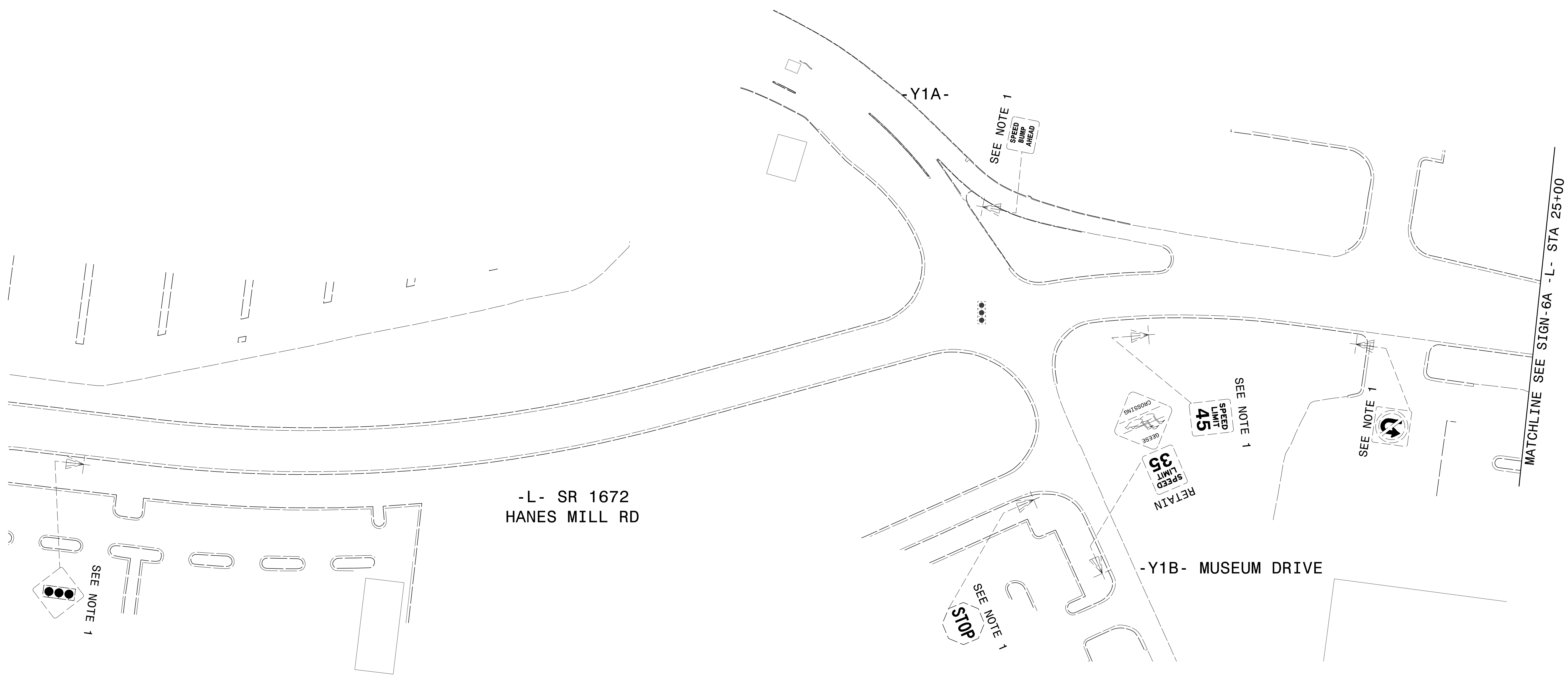
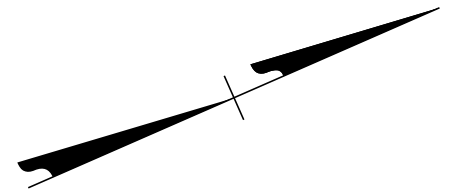


SIGNING DETAIL SHEET

PROJ. REFERENCE NO.	SHEET NO.
U-2729	SIGN-5A

PLANS PREPARED FOR THE NCDOT BY:

M MOTT MACDONALD I & E, LLC
 1101 HAYNES STREET, SUITE 101
 RALEIGH, NC 27604
M MOTT MACDONALD
 NC LICENSE NO. F-0669



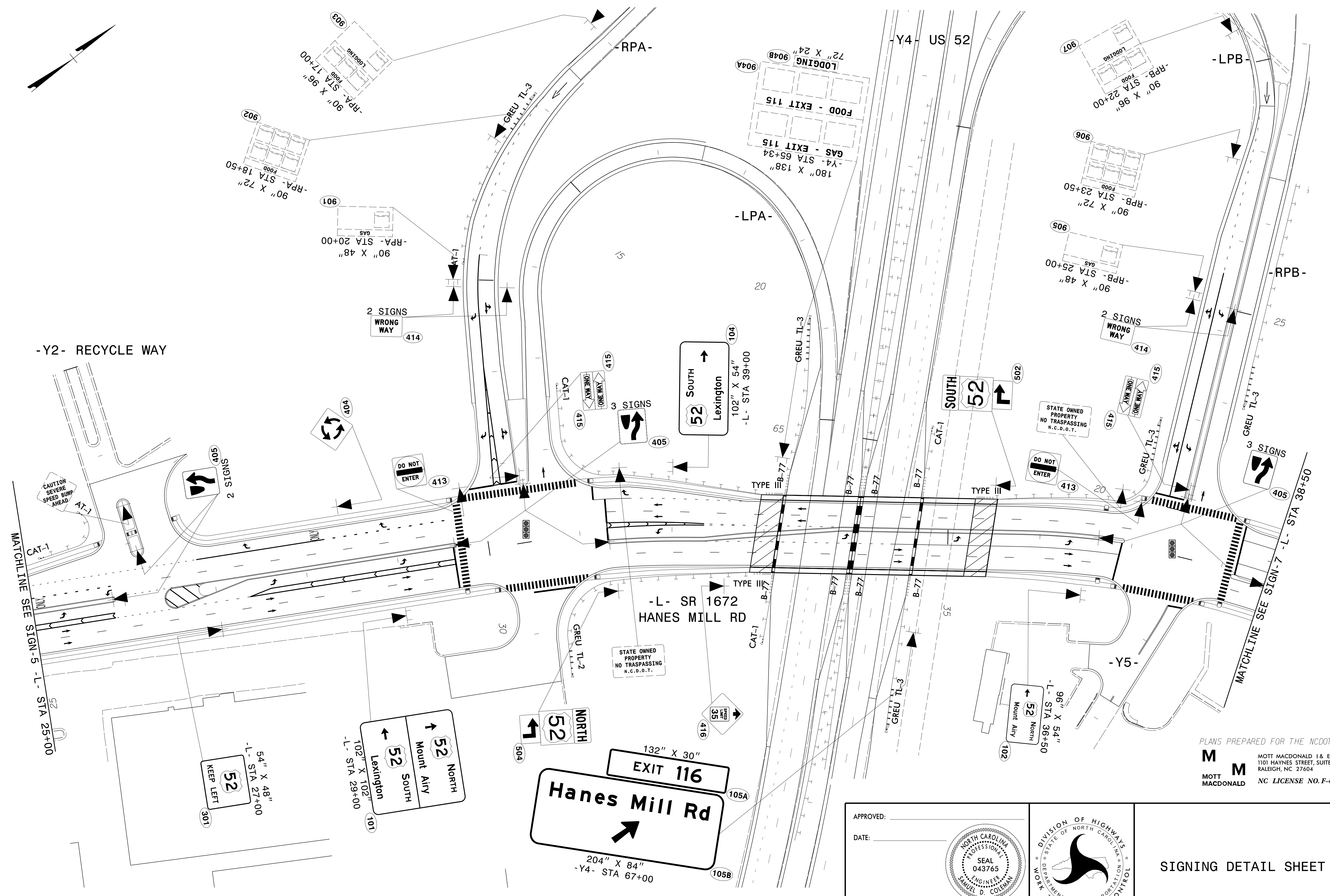
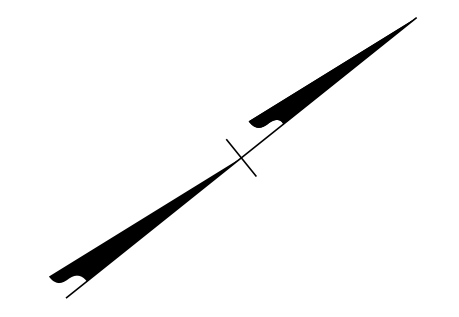
3/14/2023
 G:\308350_DDC\2\ARC-U-2729\TrafficControl\Signing\CADD\Signing Layout Plans\U-2729_Sgn_SGN_5a.dgn
 User:COL85144

APPROVED: _____
 DATE: _____

**DOCUMENT NOT CONSIDERED FINAL
 UNLESS ALL SIGNATURES COMPLETED**



**EXISTING SIGNING
 DETAIL SHEET**



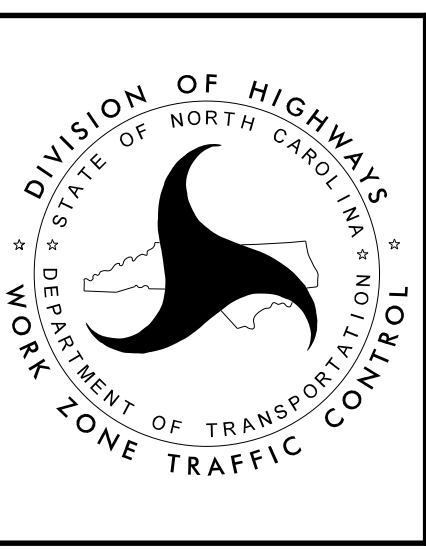
3/14/2023
 G:\308350_DDC\2\ARC-U-2729\TrafficControl\Signing\CADD\Signing Layout Plans\U-2729_Sgn_SGN.6.dgn
 User:COL8514

PLANS PREPARED FOR THE NCDOT BY:
M M
 MOTT MACDONALD
 MOTT MACDONALD 1 & E, LLC
 1101 HAYNES STREET, SUITE 101
 RALEIGH, NC 27604
 NC LICENSE NO. F-0669

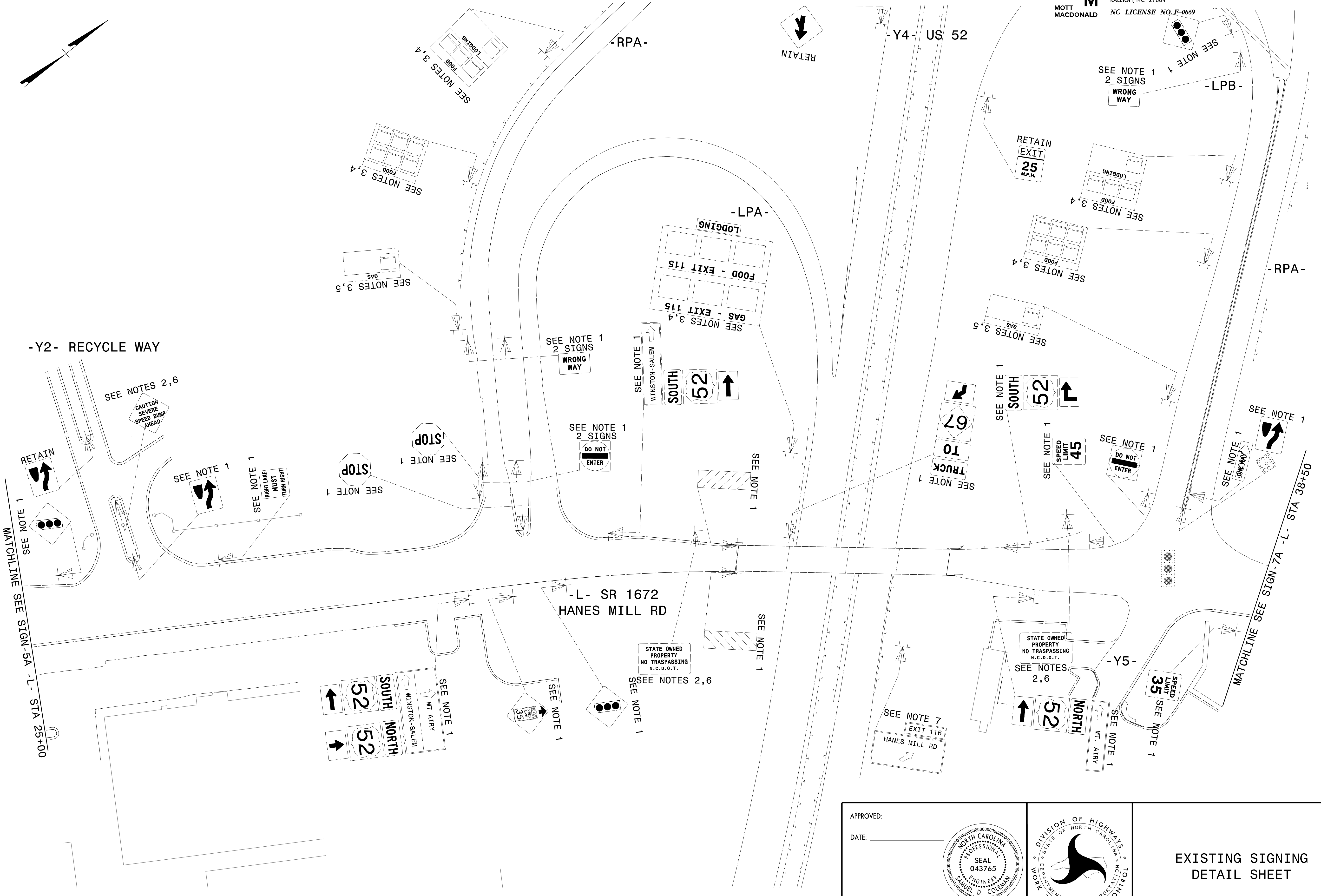
APPROVED: _____

DATE: _____

**DOCUMENT NOT CONSIDERED FINAL
UNLESS ALL SIGNATURES COMPLETED**



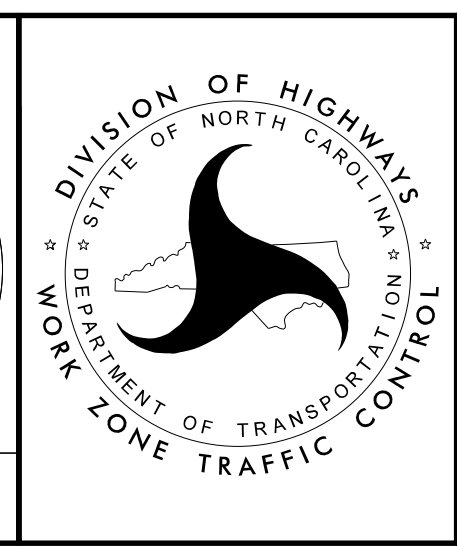
SIGNING DETAIL SHEET



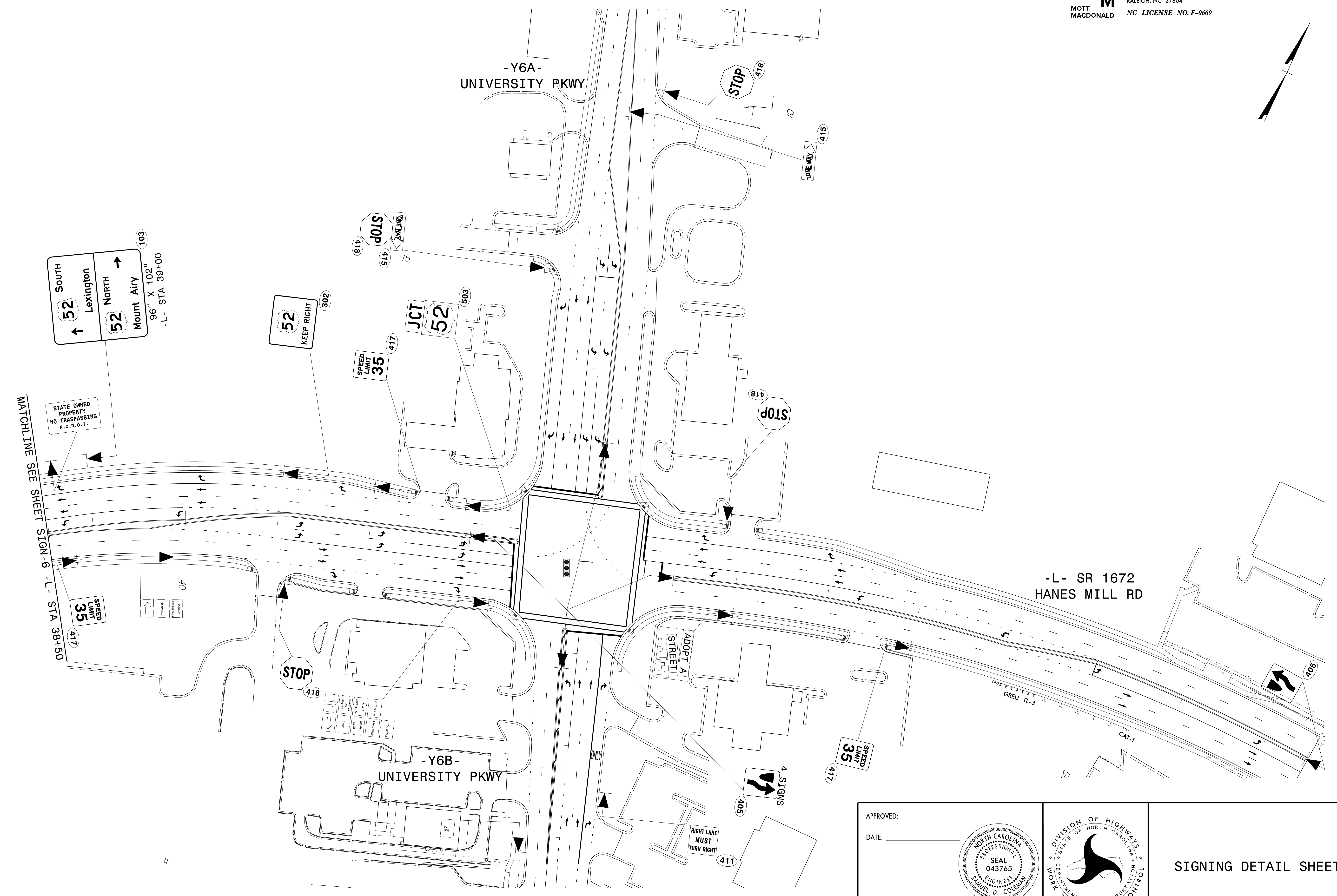
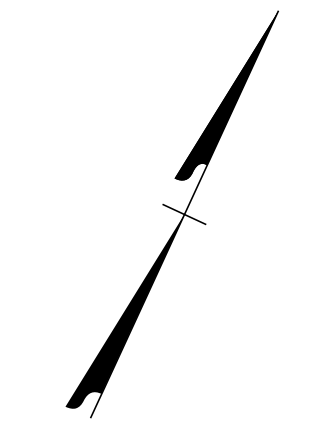
3/14/2023
 G:\308350_DDC\2\ARC-U-2729\TrafficControl\CADD\Signing Layout Plans\U-2729_Sgn_SGN-6A.dgn
 User:COL85144

APPROVED: _____
 DATE: _____

**DOCUMENT NOT CONSIDERED FINAL
 UNLESS ALL SIGNATURES COMPLETED**



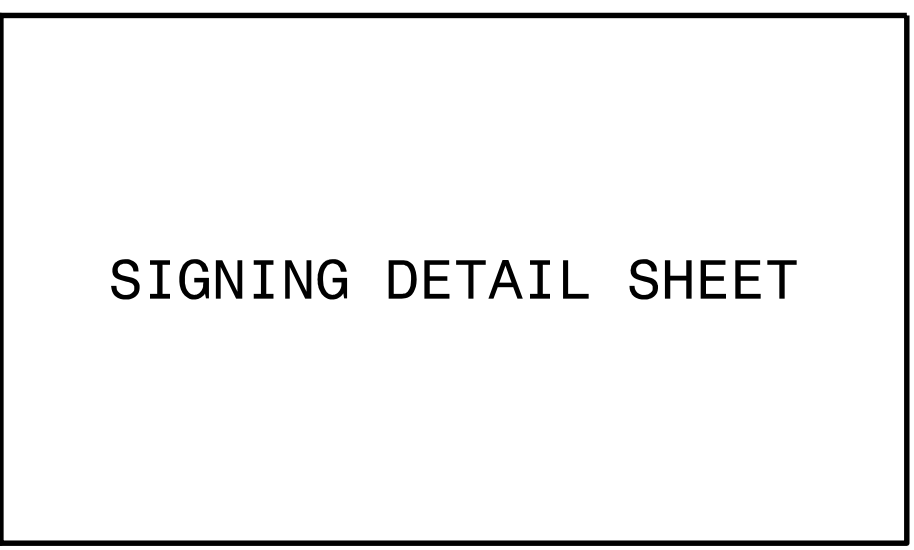
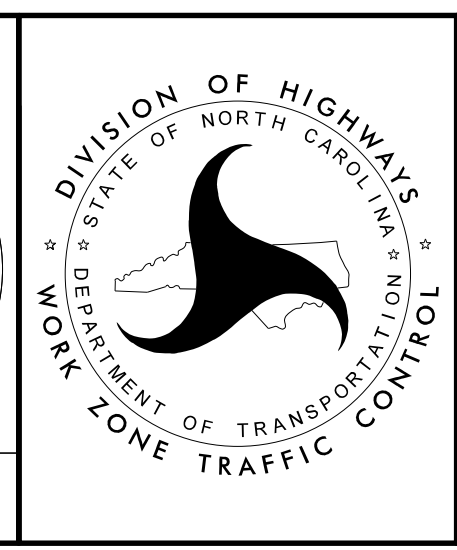
**EXISTING SIGNING
 DETAIL SHEET**



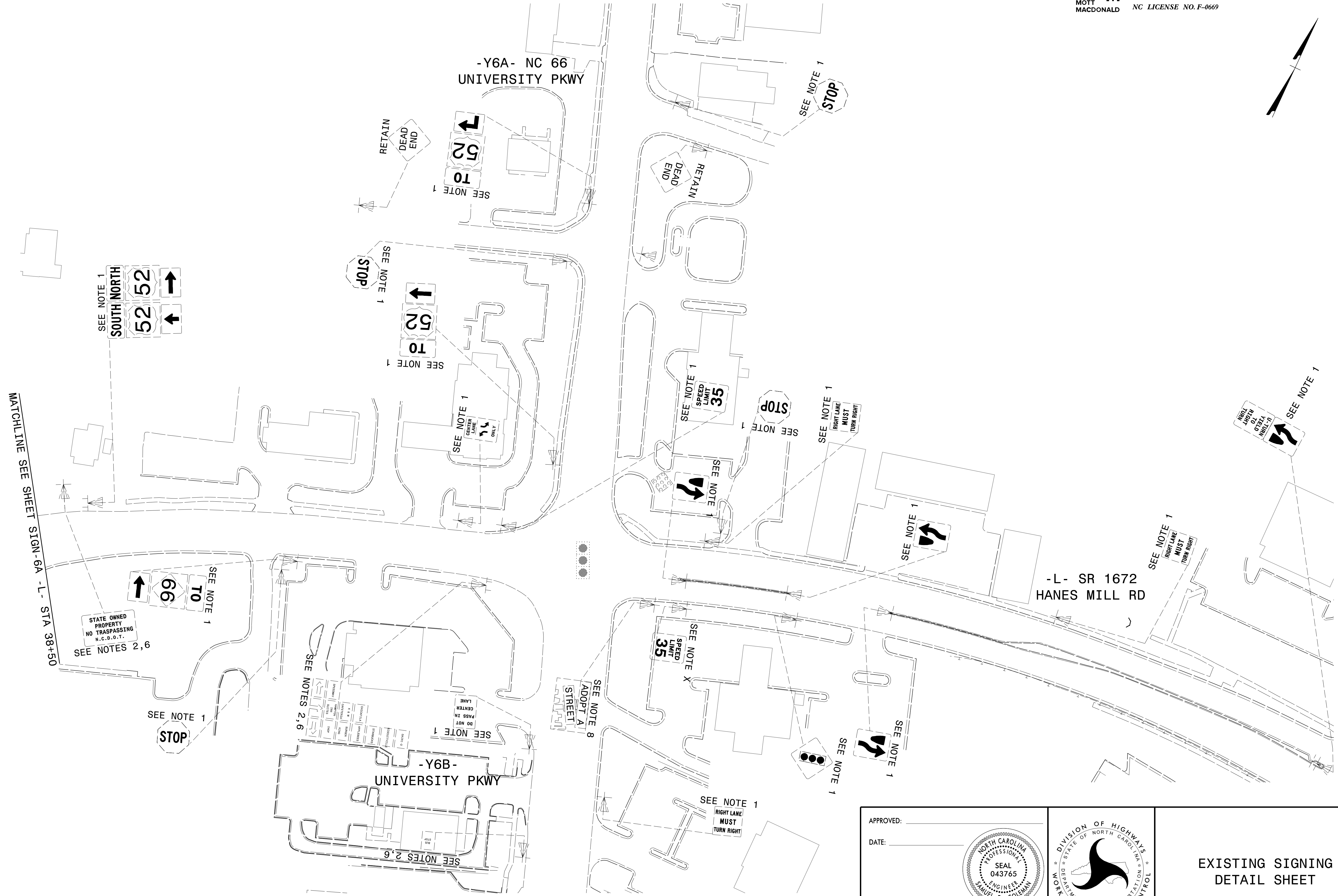
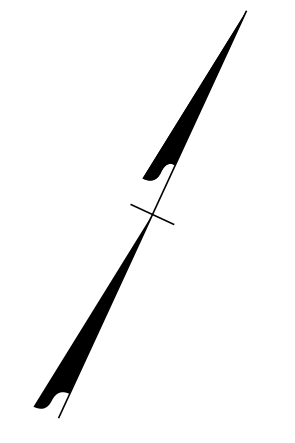
3/14/2023
 G:\308350_DDC\2\ARC-U-2729\TrafficControl\Signing\CADD\Signing Layout Plans\U-2729_Sgn_SGN_7.dgn
 User:COL8514

APPROVED: _____
 DATE: _____

**DOCUMENT NOT CONSIDERED FINAL
 UNLESS ALL SIGNATURES COMPLETED**



SIGNING DETAIL SHEET



3/14/2023
 G:\308350_DDC\2\ARC-U-2729\TrafficControl\Signing\CADD\Signing Layout Plans\U-2729_Sgn_SGN_7a.dgn
 User:COL85144

APPROVED: _____
 DATE: _____

**DOCUMENT NOT CONSIDERED FINAL
 UNLESS ALL SIGNATURES COMPLETED**



**EXISTING SIGNING
 DETAIL SHEET**