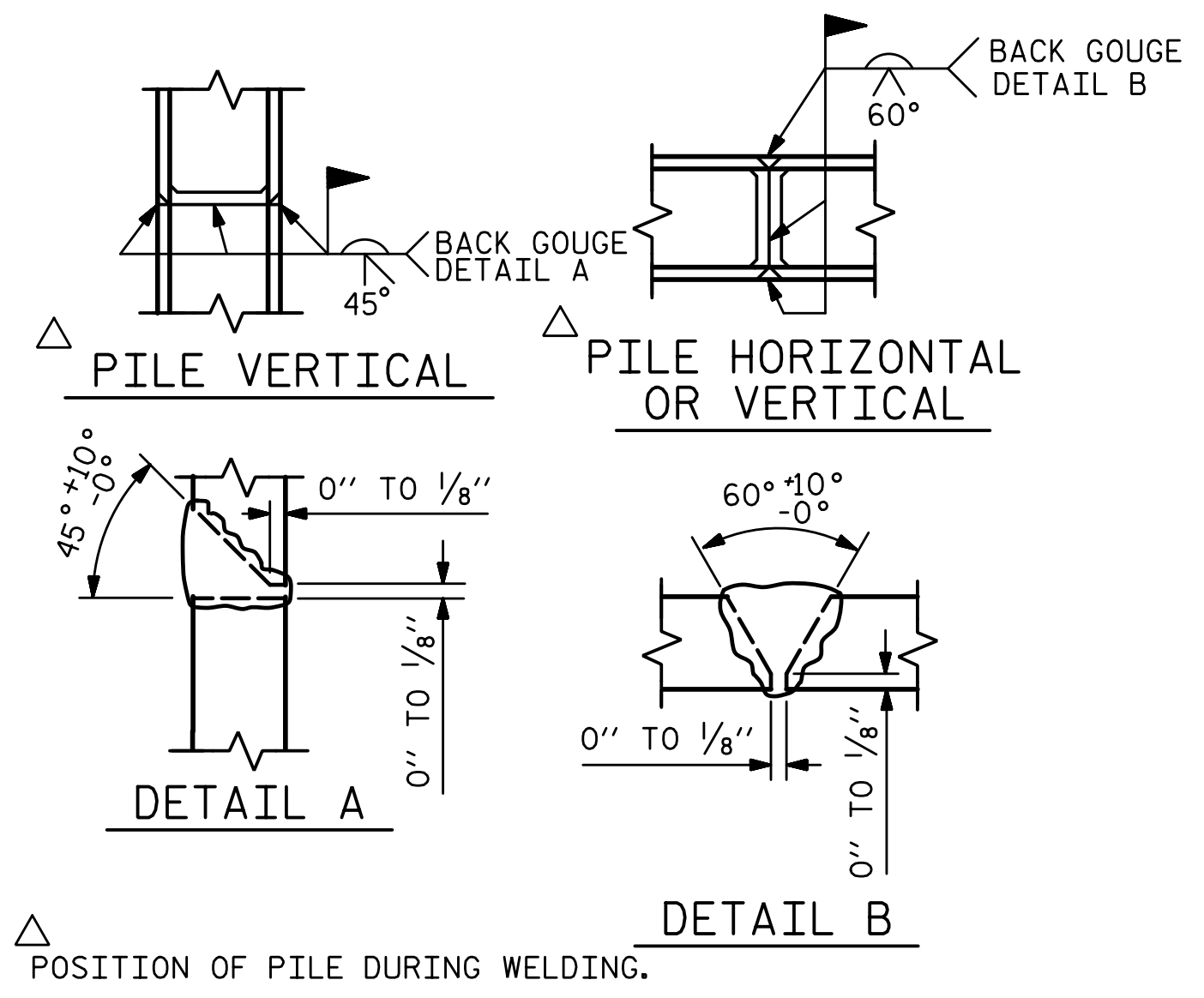
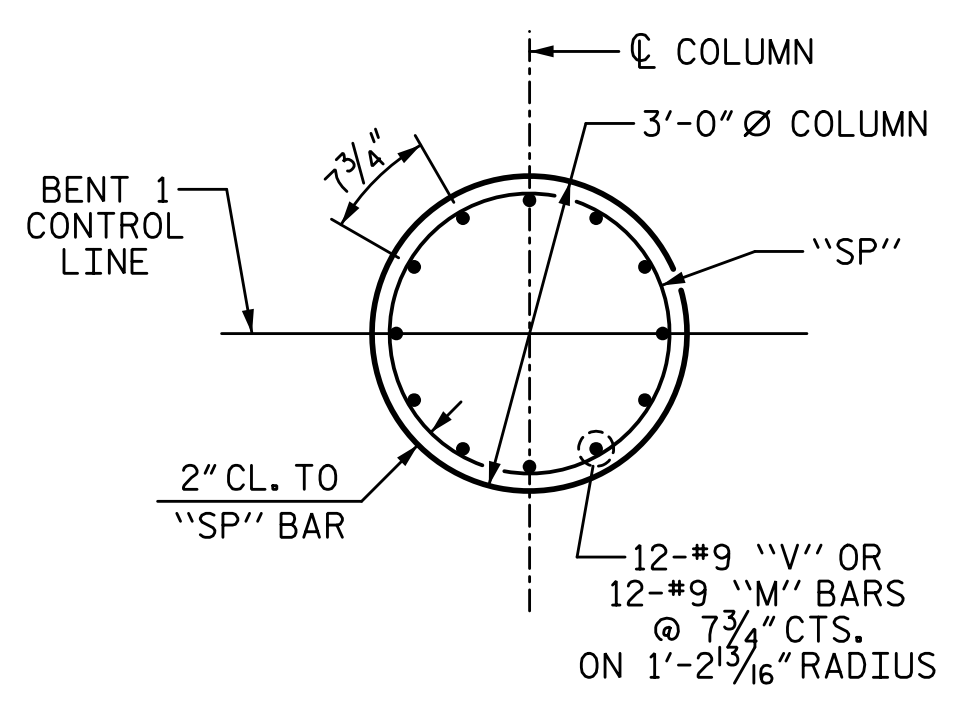


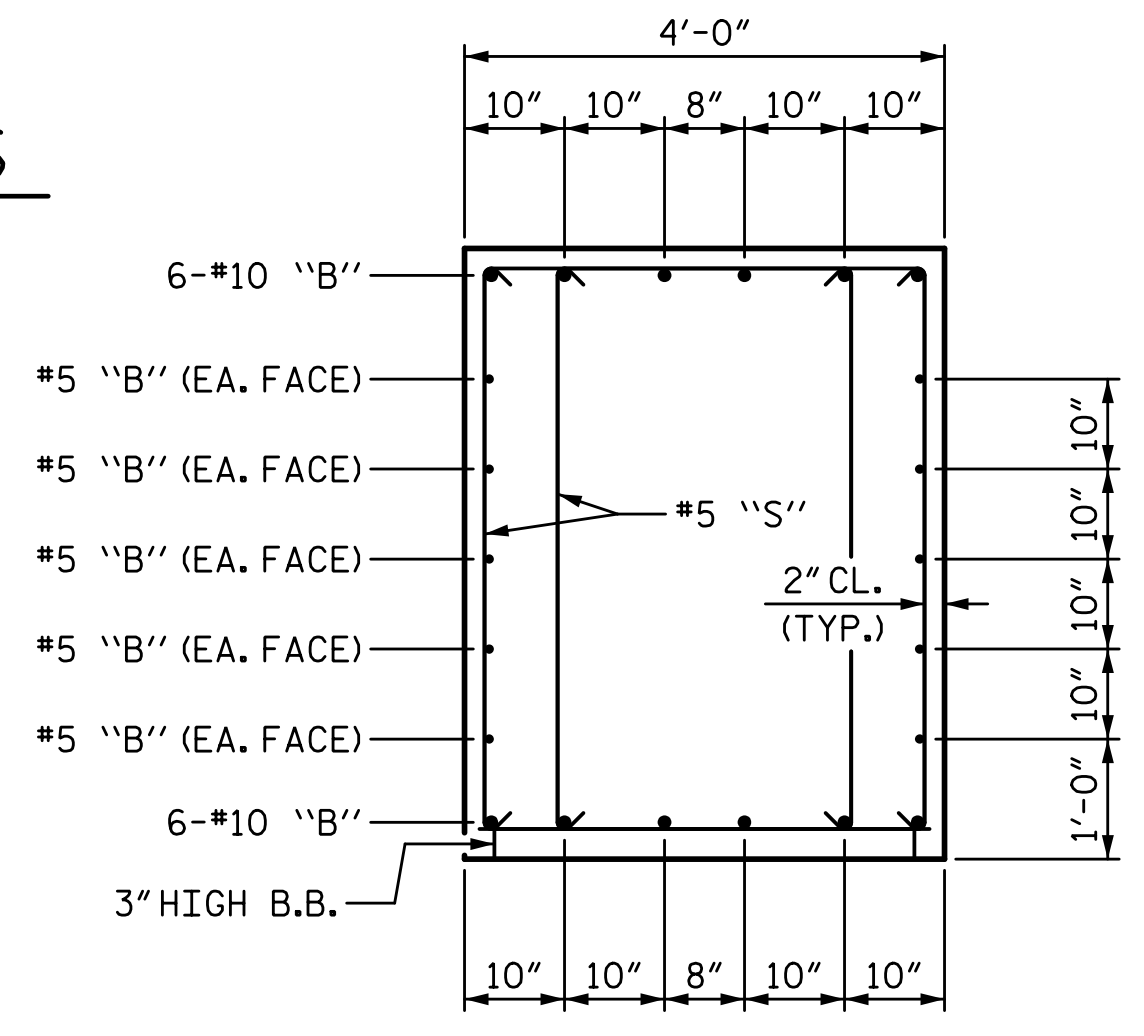
4/6/2023 12:02:08 PM P:\Raleigh\Projects\2018\Division 9 (Mott MacDonald)\U-2729\Structures\Drawings\Final\U2729\_SMU-B1\_330290.dgn



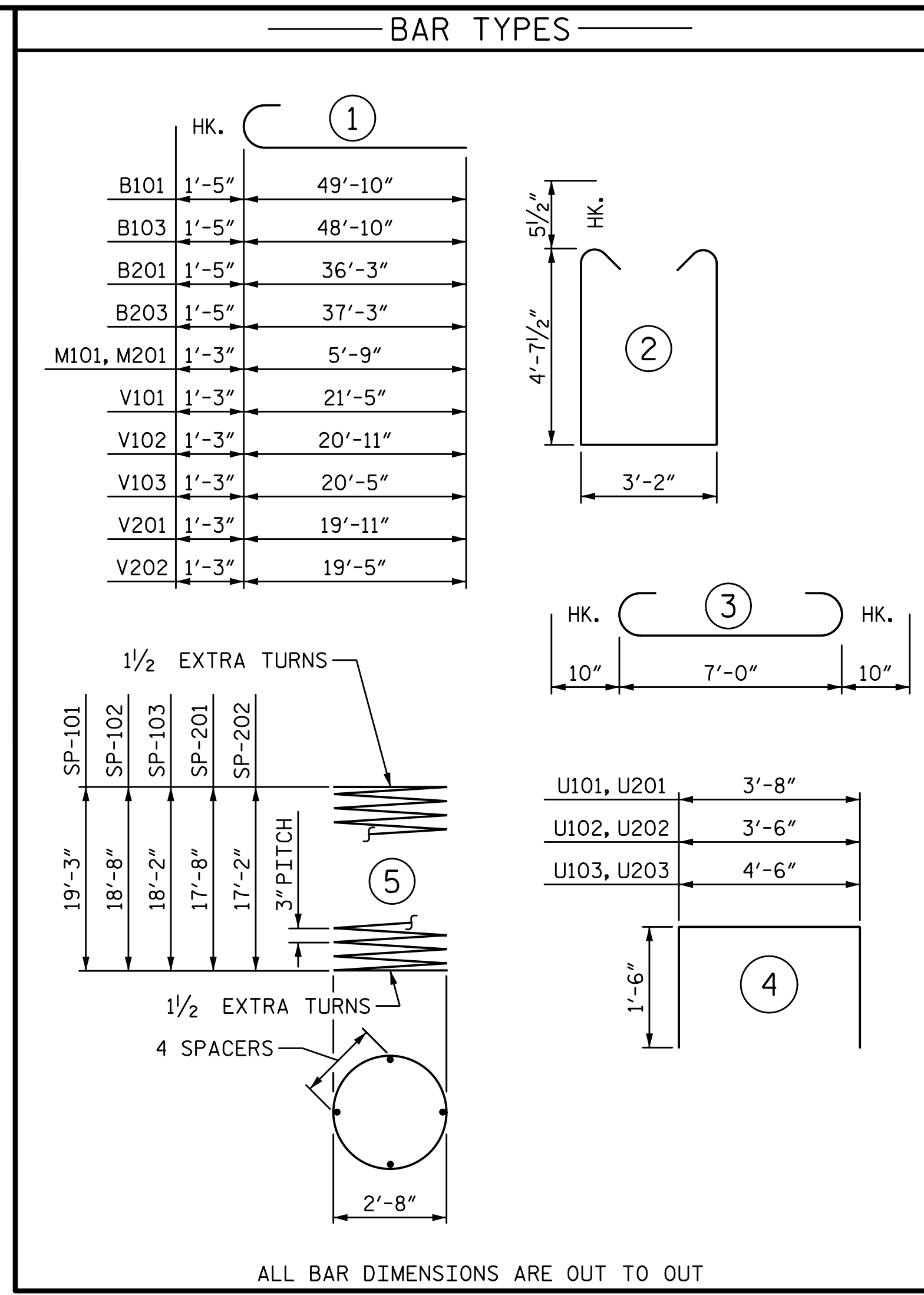
**PILE SPLICING DETAILS**



**PLAN OF COLUMN**

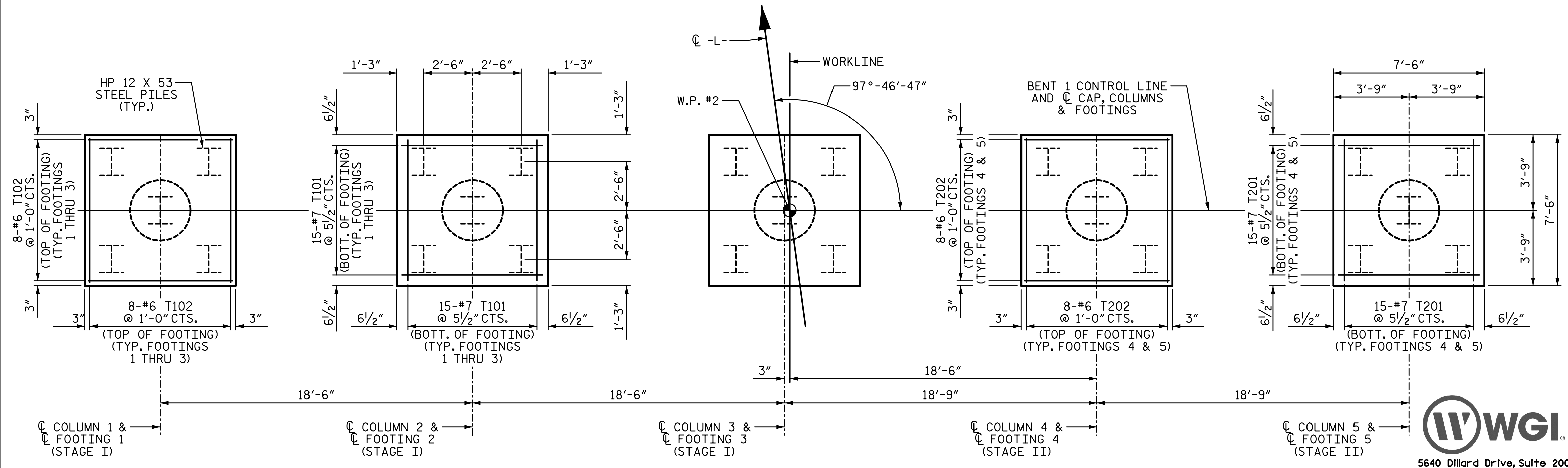


**SECTION A-A**



BILL OF MATERIAL													
BENT 1													
STAGE I						STAGE II							
BAR	NO.	SIZE	TYPE	LENGTH	WEIGHT	BAR	NO.	SIZE	TYPE	LENGTH	WEIGHT		
B101	6	#10		51'-3"	1323	B201	6	#10		37'-8"	972		
B102	20	#5	STR	27'-1"	565	B202	10	#5	STR	37'-1"	387		
B103	6	#10		50'-3"	1297	B203	6	#10		38'-8"	998		
B104	6	#4	STR	4'-2"	17	B204	6	#4	STR	4'-1"	16		
B105	30	#4	STR	5'-10"	117	B205	24	#4	STR	4'-3"	68		
M101	36	#9		7'-0"	857	M201	24	#9		7'-0"	571		
S101	86	#5		13'-4"	1196	S201	76	#5		13'-4"	1057		
T101	90	#7		8'-8"	1594	T201	60	#7		8'-8"	1063		
T102	48	#6	STR	7'-0"	505	T202	32	#6	STR	7'-0"	336		
U101	59	#4		6'-8"	263	U201	45	#4		6'-8"	200		
U102	5	#4		6'-6"	22	U202	5	#4		6'-6"	22		
U103	4	#4		7'-6"	20	U203	4	#4		7'-6"	20		
V101	12	#9		22'-8"	925	V201	12	#9		21'-2"	864		
V102	12	#9		22'-2"	904	V202	12	#9		20'-8"	843		
V103	12	#9		21'-8"	884								
SP-101	1	*		660'-1"	441	SP-201	1	*		610'-7"	408		
SP-102	1	*		643'-7"	430	SP-202	1	*		594'-1"	397		
SP-103	1	*		627'-1"	419								
REINFORCING STEEL					10489 LB	REINFORCING STEEL					7417 LB		
SPIRAL COL. REINF. STEEL					1290 LB	SPIRAL COL. REINF. STEEL					805 LB		
CLASS "A" CONCRETE BREAKDOWN						CLASS "A" CONCRETE BREAKDOWN							
POUR 1 (FOOTINGS)						17.8 CY	POUR 1 (FOOTINGS)						11.9 CY
POUR 2 (COLUMNS)						14.5 CY	POUR 2 (COLUMNS)						9.0 CY
POUR 3 (CAP)						36.7 CY	POUR 3 (CAP)						29.0 CY
TOTAL						69.0 CY	TOTAL						49.9 CY
HP 12 X 53 STEEL PILES							HP 12 X 53 STEEL PILES						
NO. 15						1050 LF	NO. 10						700 LF
PILE DRIVING EQUIPMENT SETUP							PILE DRIVING EQUIPMENT SETUP						
HP 14 X 73 STEEL PILES						15 EA	HP 14 X 73 STEEL PILES						10 EA

\* THE "SP" SPIRAL REINFORCING STEEL SHALL BE W20 OR D-20 COLD DRAWN WIRE OR #4 PLAIN OR DEFORMED BAR.



**PLAN OF FOOTINGS**

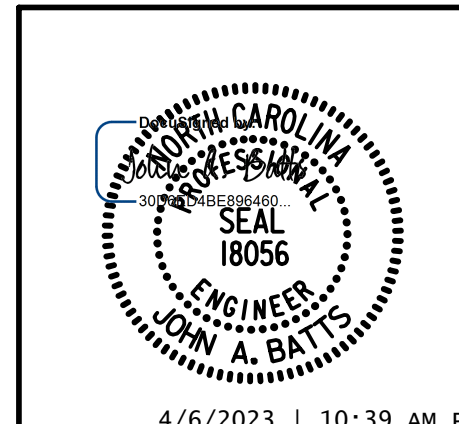
(PILE PLACEMENT AND DIMENSIONS ARE TYPICAL FOR EACH FOOTING)  
(REINFORCING STEEL IS TYPICAL FOR EACH FOOTING, EACH STAGE)

PROJECT NO. U-2729  
FORSYTH COUNTY  
 STATION: 33+99.11 -L-

SHEET 3 OF 3

STATE OF NORTH CAROLINA  
 DEPARTMENT OF TRANSPORTATION  
 RALEIGH  
 SUBSTRUCTURE

**BENT 1**



**W.W.G.I.**  
 5640 Dillard Drive, Suite 200  
 Cary, NC 27518  
 LICENSURE NO. C-4434

DRAWN BY: T. BANKOVICH DATE: 9-22  
 CHECKED BY: T.J. BEACH DATE: 9-22  
 DESIGN ENGINEER OF RECORD: J.A. BATTS DATE: 9-22

REVISIONS				SHEET NO.	
NO.	BY:	DATE:	NO.	BY:	DATE:
1			3		
2			4		

TOTAL SHEETS: 59

**DOCUMENT NOT CONSIDERED FINAL UNLESS ALL SIGNATURES COMPLETED**