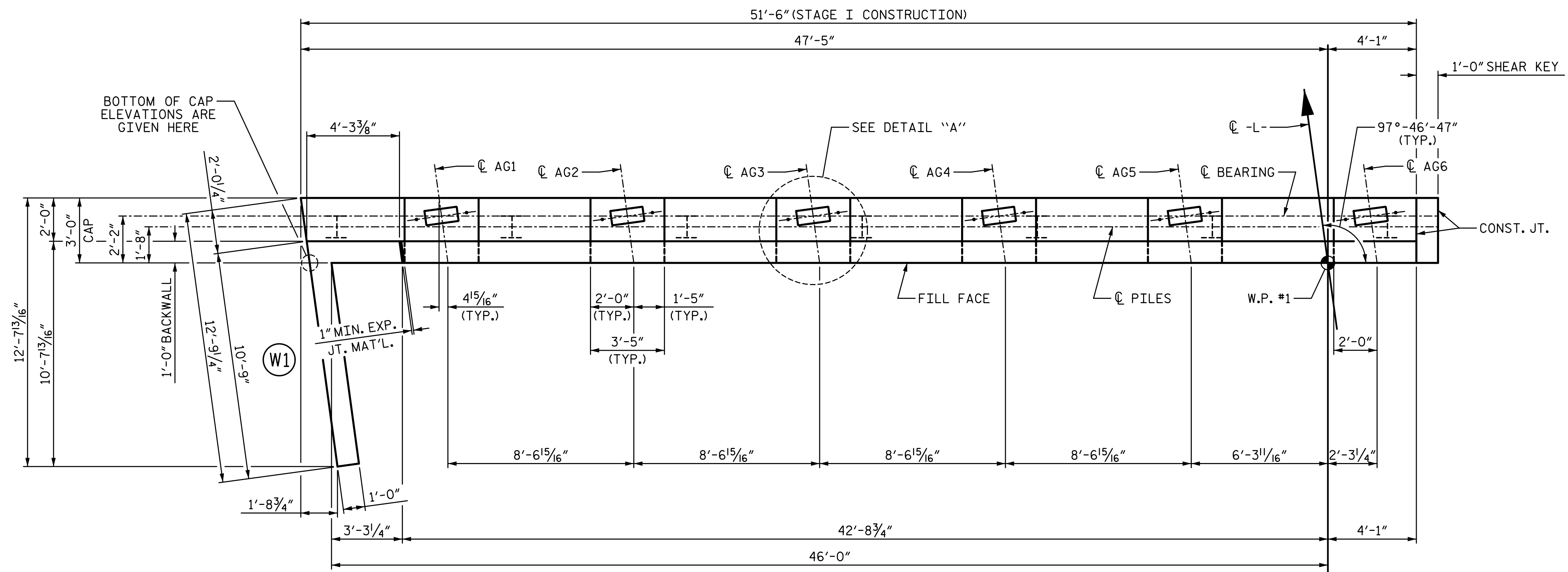


4/6/2023 12:02:06 PMP:\P\Projects\2018\Division 9 (Mott MacDonald)\U-2729\Structures\Drawings\Final\U2729\_SMU-E1\_330290.dgn

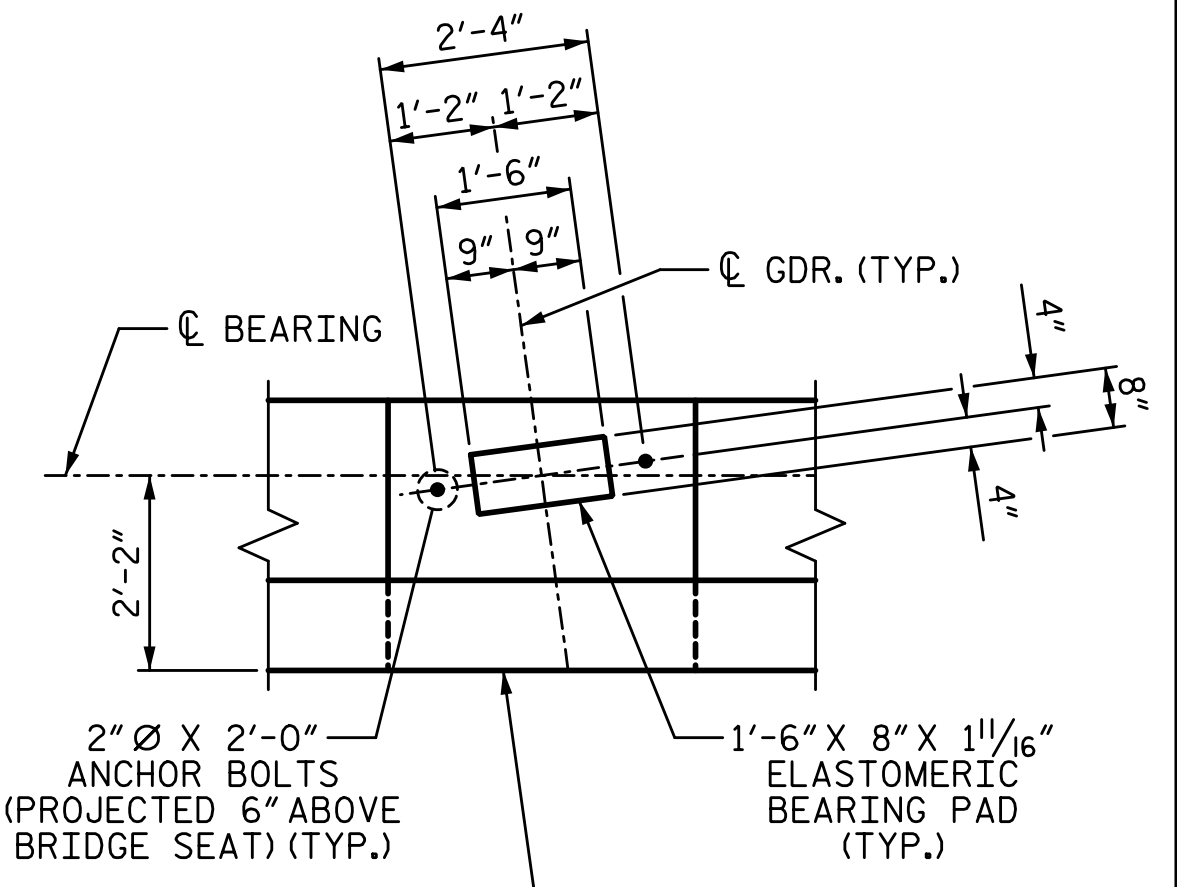


**PLAN**

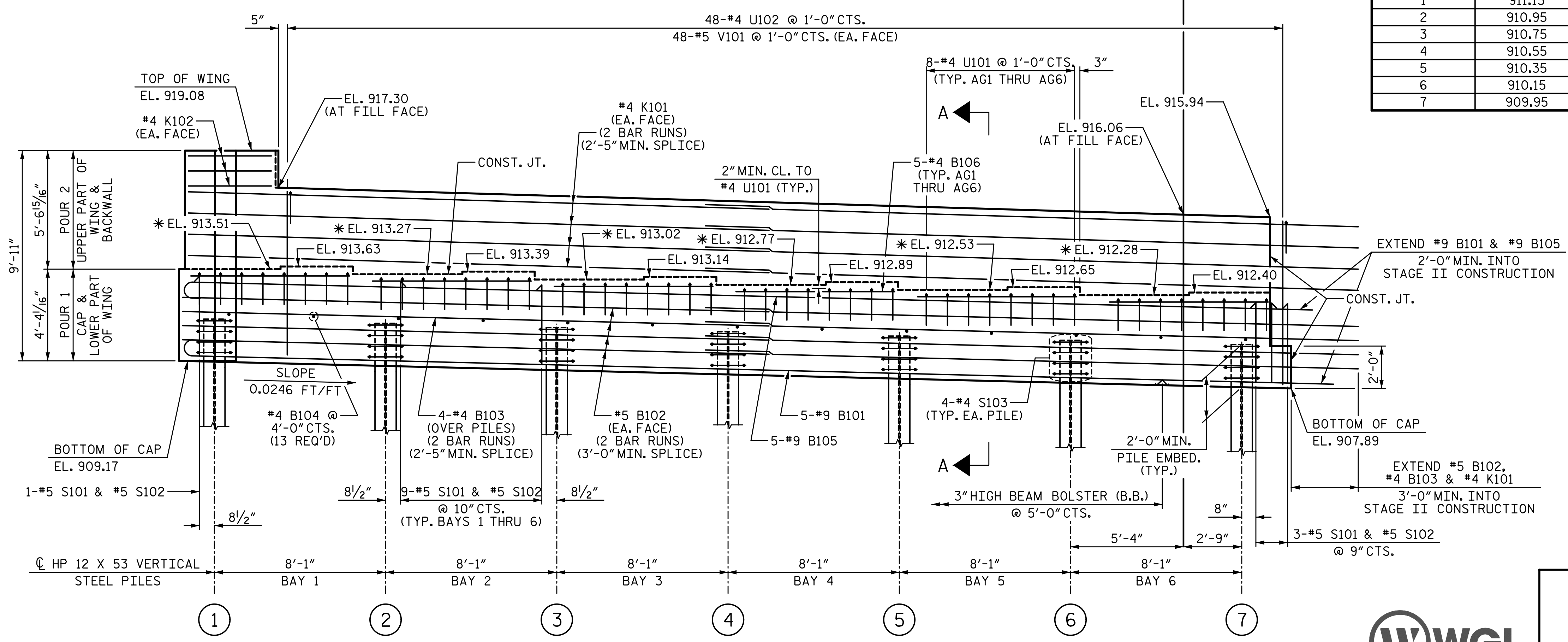
**NOTES:**

- STIRRUPS AND "U" BARS IN CAP MAY BE SHIFTED AS NECESSARY TO CLEAR ANCHOR BOLTS.
- MECHANICAL COUPLERS SHALL BE USED TO JOIN THE #9 "B" BARS IN STAGE I WITH THE #9 "B" BARS IN STAGE II. THE LOCATION OF THE COUPLERS SHALL BE STAGGERED ON ALTERNATING BARS BY 1 FOOT AND THE STAGE I BARS SHALL BE CUT ACCORDINGLY TO ALLOW A MINIMUM OF 1'-0" AND A MAXIMUM OF 2'-0" EXTENSION INTO STAGE II CONSTRUCTION.
- FOR MECHANICAL COUPLERS, SEE MECHANICAL BUTT SPLICE FOR REINFORCING STEEL IN STANDARD SPECIFICATIONS.
- THE CONTRACTOR'S ATTENTION IS CALLED TO THE FACT THAT THE LENGTHS OF THE #9 "B" BARS IN THE STAGED CONSTRUCTION JOINT MAY NEED TO BE ADJUSTED DUE TO THE TYPE OF MECHANICAL BUTT SPLICE CHOSEN BY THE CONTRACTOR. NO ADDITIONAL PAYMENT WILL BE MADE FOR ANY ADJUSTMENTS.
- FOR SECTION A-A, SEE SHEET 4 OF 4.
- \*FOR LOCATION OF ELEVATIONS BETWEEN BRIDGE SEAT BUILD-UPS SEE SECTION A-A, SEE SHEET 4 OF 4.
- BACKWALL SHALL BE PLACED BEFORE APPLYING THE EPOXY PROTECTIVE COATING.
- THE TOP SURFACE AREAS OF THE END BENT CAPS SHALL BE CURED IN ACCORDANCE WITH THE STANDARD SPECIFICATIONS EXPECT THE MEMBRANE CURING COMPOUND METHOD SHALL NOT BE USED.
- THE TOP SURFACE OF THE CAP EXCEPT THE BRIDGE SEAT BUILDUPS SHALL BE SLOPED TRANSVERSELY FROM THE FILL FACE TO THE BACK FACE AT THE RATE OF 2%.
- SEE GENERAL DRAWING "FOUNDATION LAYOUT" FOR ADDITIONAL NOTES FOR DRIVING PILES.

TOP OF PILE ELEVATIONS	
PILE	ELEVATION
1	911.15
2	910.95
3	910.75
4	910.55
5	910.35
6	910.15
7	909.95



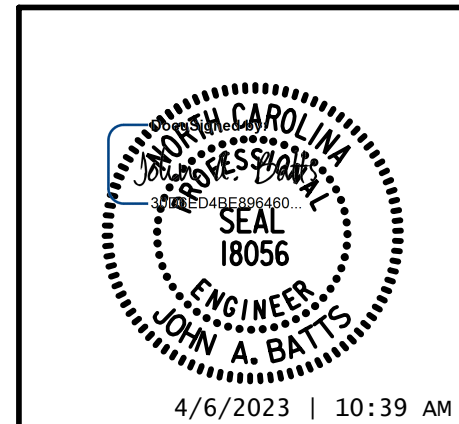
**DETAIL "A"**  
(TYP. EA. GIRDER)



**ELEVATION**

PROJECT NO. U-2729  
 FORSYTH COUNTY  
 STATION: 33+99.11 -L-  
 SHEET 1 OF 4

STATE OF NORTH CAROLINA  
 DEPARTMENT OF TRANSPORTATION  
 RALEIGH  
 SUBSTRUCTURE  
 END BENT 1  
 STAGE I



DRAWN BY: T. BANKOVICH DATE: 9-22  
 CHECKED BY: T.J. BEACH DATE: 9-22  
 DESIGN ENGINEER OF RECORD: J.A. BATTS DATE: 9-22

REVISIONS				SHEET NO.	
NO.	BY:	DATE:	NO.	BY:	DATE:
1			3		
2			4		

SHEET NO. S-41  
TOTAL SHEETS 59

LICENSURE NO. C-4434  
**DOCUMENT NOT CONSIDERED FINAL UNLESS ALL SIGNATURES COMPLETED**