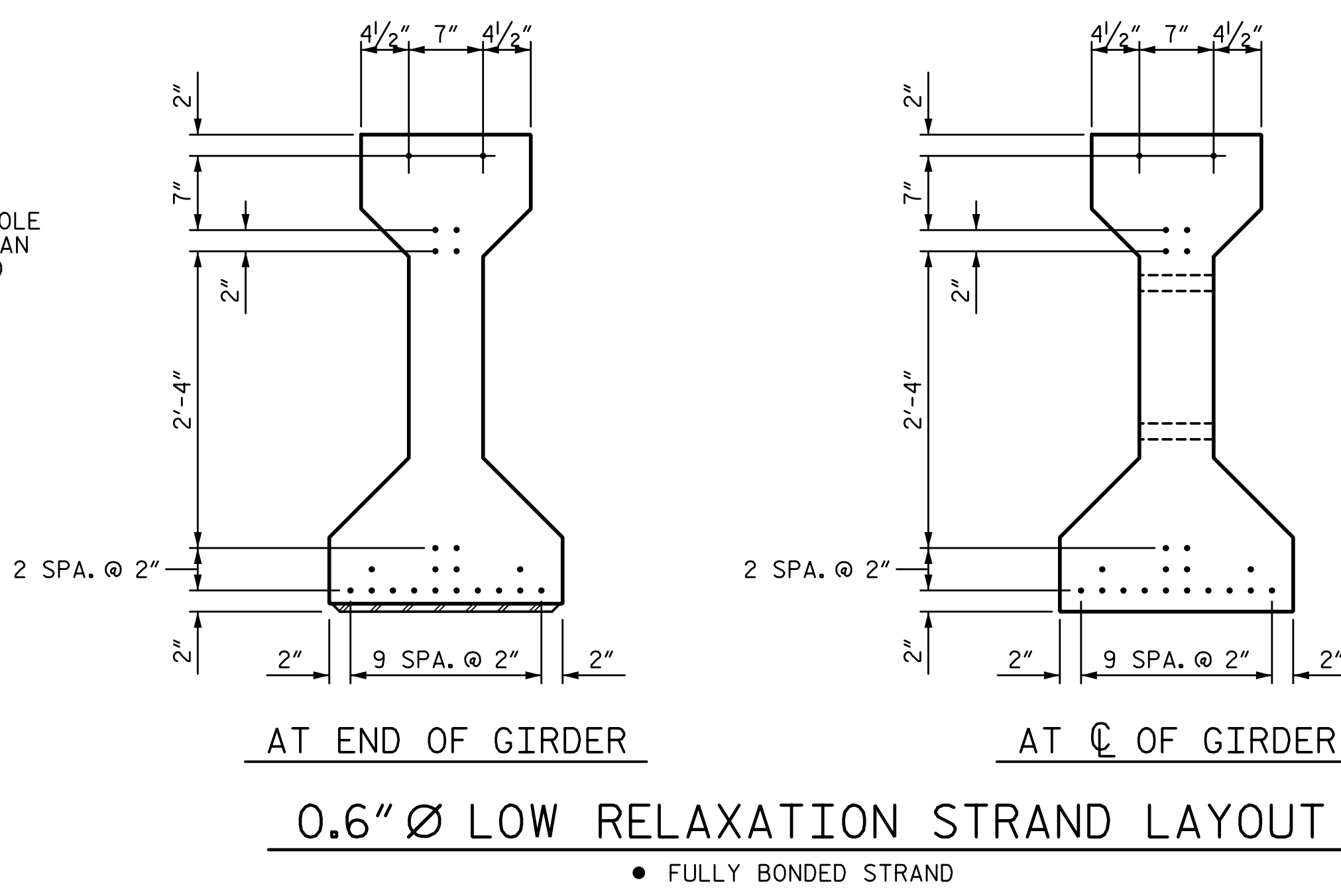
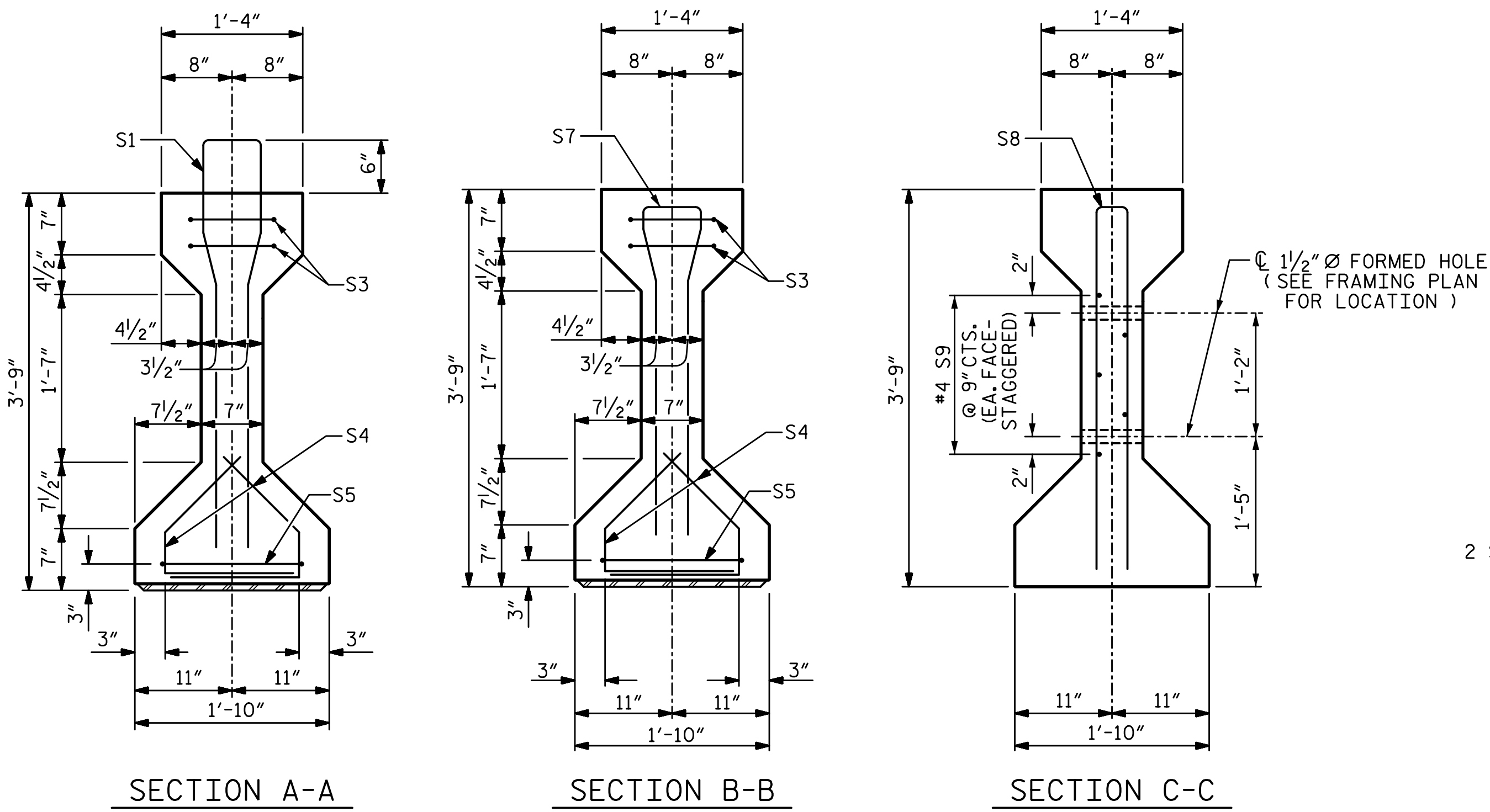


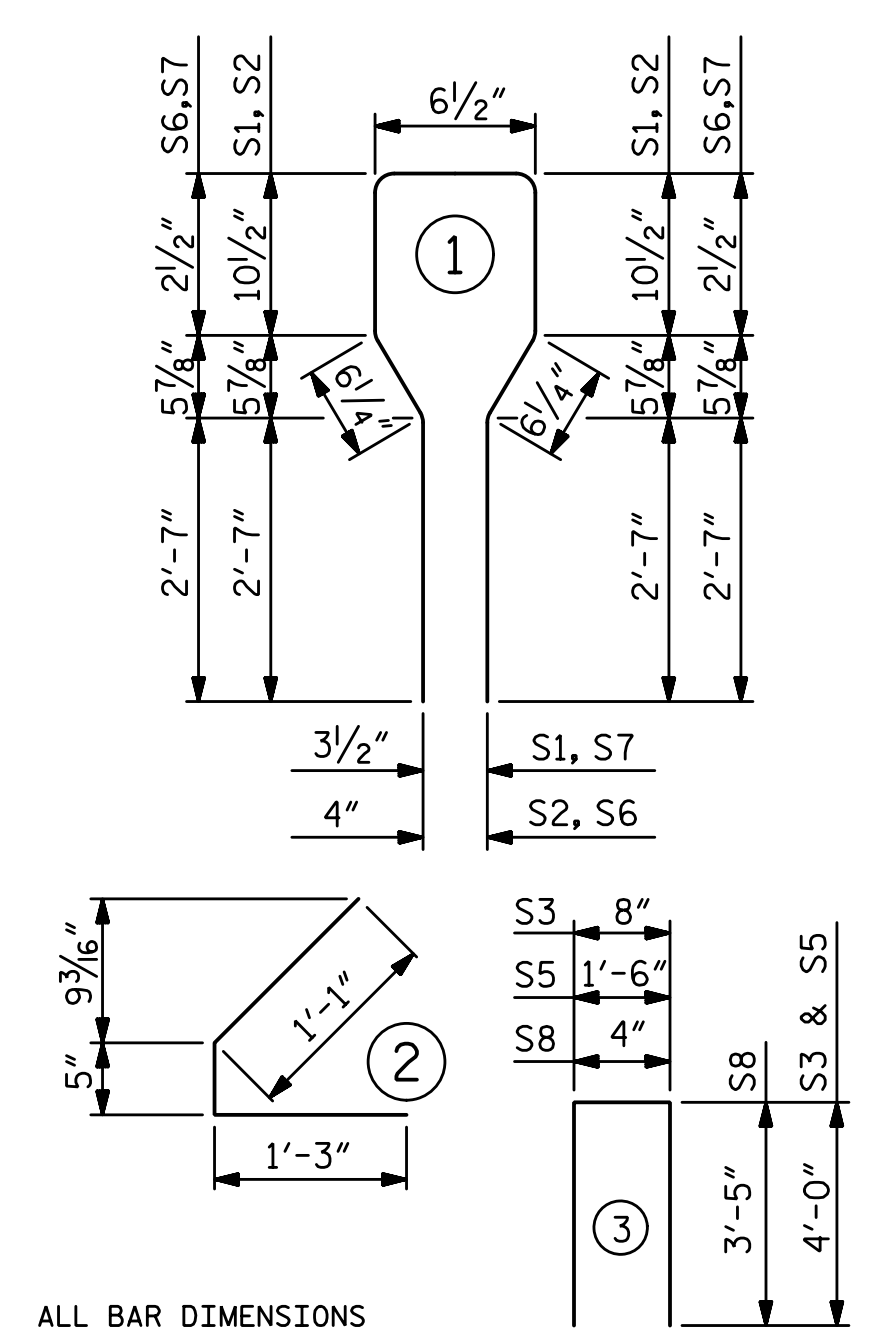
4/6/2023 12:01:55 PM P:\Raleigh\Projects\2018\Division 9 (Mott MacDonald)\U-2729\Structures\Drawings\Final\U2729_SMU_G_330290.dgn



0.6" Ø L. R. GRADE 270 STRANDS		
AREA (SQUARE INCHES)	ULTIMATE STRENGTH (LBS. PER STRAND)	APPLIED PRESTRESS (LBS. PER STRAND)
0.217	58,600	43,950

REINFORCING STEEL FOR ONE GIRDER					
BAR	NUMBER	SIZE	TYPE	LENGTH	WEIGHT
S1	55	#5	1	8'-6"	488
S2	6	#6	1	8'-6"	77
S3	4	#4	3	8'-8"	23
S4	56	#4	2	2'-9"	103
S5	2	#4	3	9'-6"	13
S6	6	#6	1	7'-2"	65
S7	3	#5	1	7'-2"	22
S8	2	#5	3	7'-2"	15
S9	5	#4	STR	7'-0"	23

BAR TYPES



ALL BAR DIMENSIONS ARE OUT-TO-OUT

QUANTITIES FOR ONE GIRDER

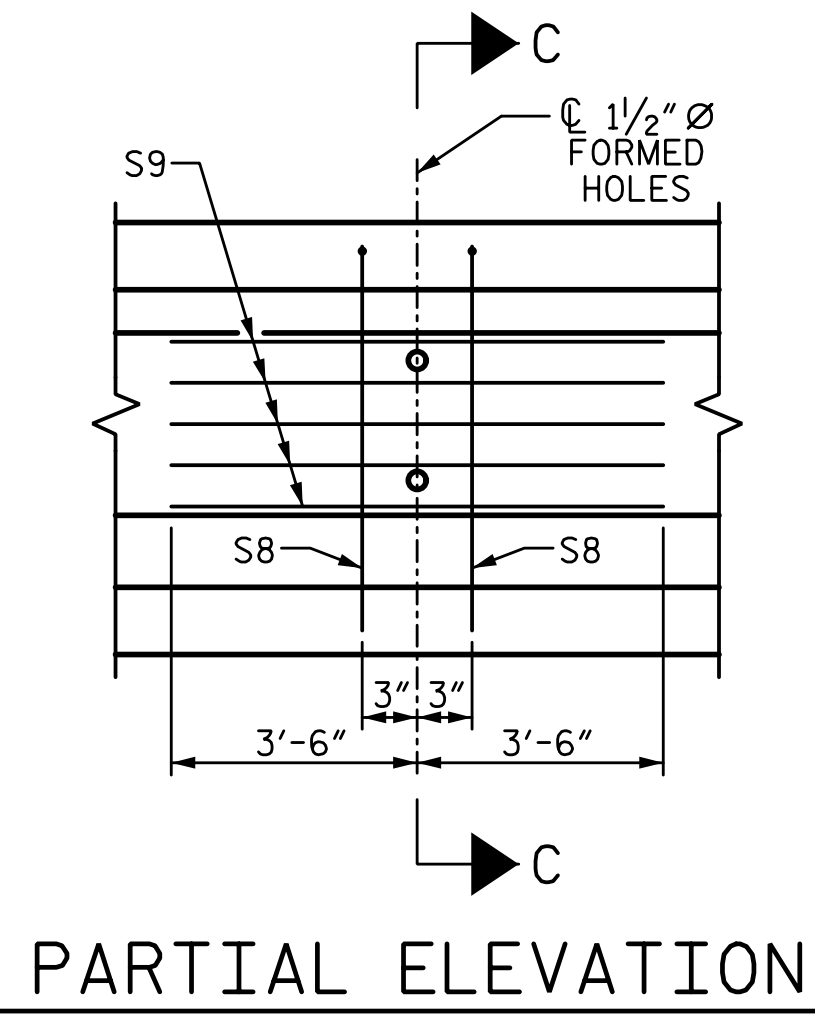
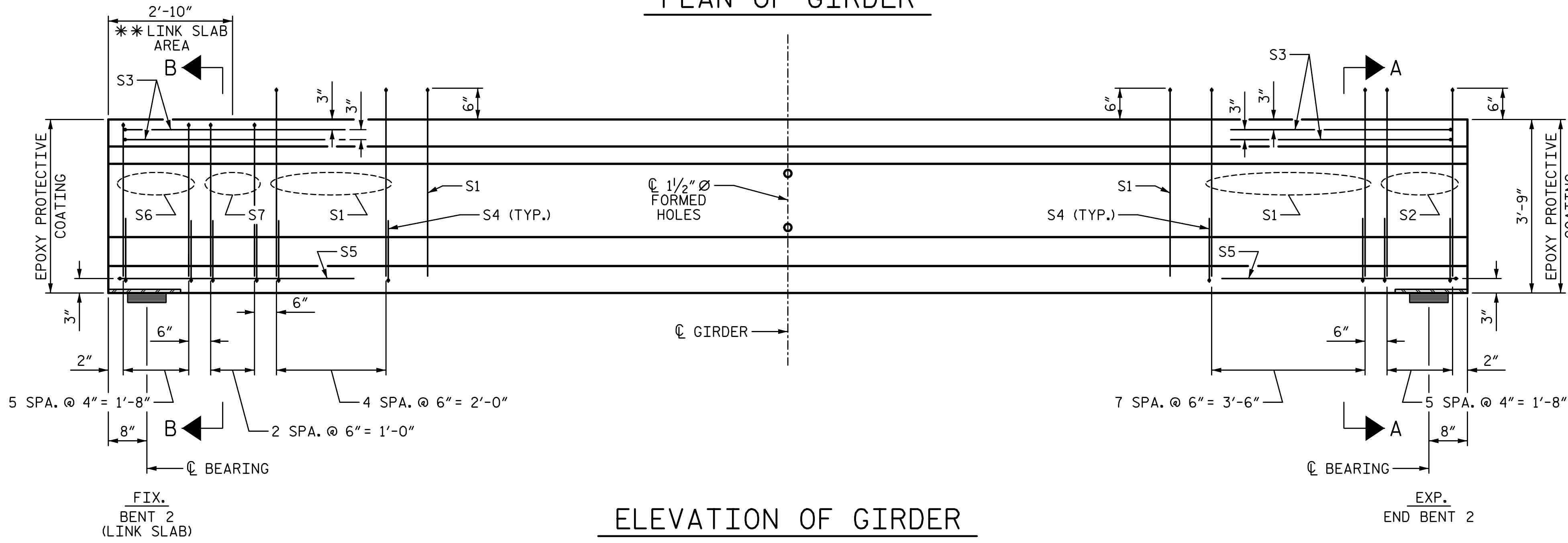
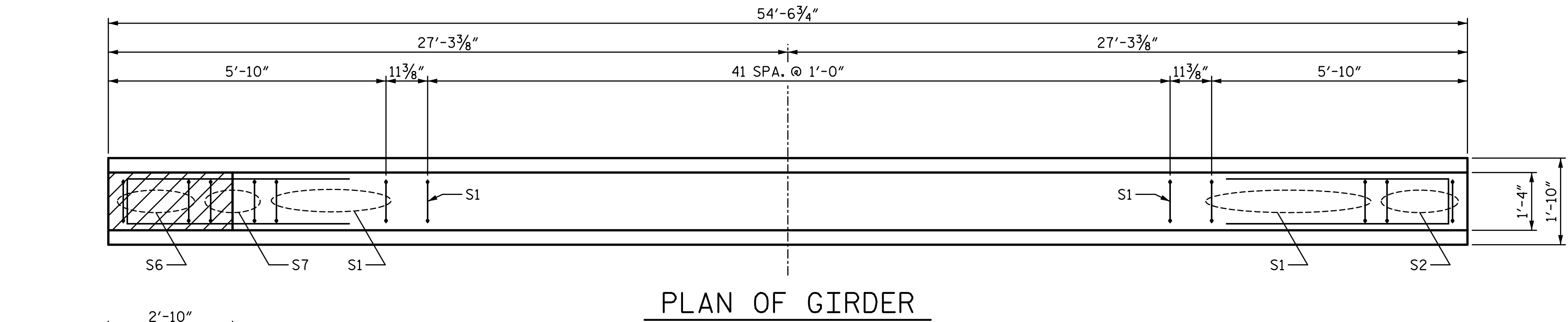
	REINFORCING STEEL	7000 PSI CONCRETE	0.6" Ø L. R. STRANDS
	LB.	C.Y.	No.
GIRDERS	829	7.9	22

GIRDERS REQUIRED

NUMBER	LENGTH	TOTAL LENGTH
11	54'-6 3/4"	600'-2 1/4"

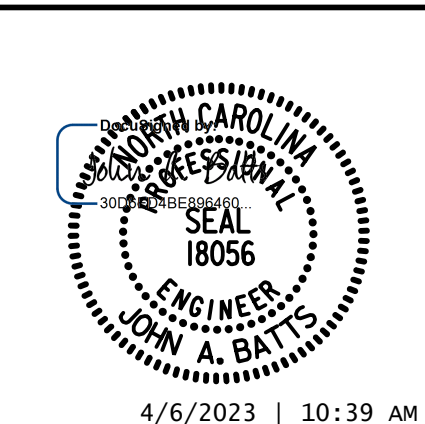
PROJECT NO. U-2729
 FORSYTH COUNTY
 STATION: 33+99.11 -L-

SHEET 3 OF 4



PARTIAL ELEVATION

SHOWING INTERMEDIATE DIAPHRAGM REINFORCING STEEL FOR ALL GIRDERS



STATE OF NORTH CAROLINA
 DEPARTMENT OF TRANSPORTATION
 RALEIGH
 SUPERSTRUCTURE
 AASHTO TYPE III
 PRESTRESSED CONCRETE
 GIRDERS
 SPAN C

REVISIONS				SHEET NO.	
NO.	BY:	DATE:	NO.	BY:	DATE:
1			3		
2			4		

DRAWN BY: T. BANKOVICH DATE: 9-22
 CHECKED BY: T.J. BEACH DATE: 9-22
 DESIGN ENGINEER OF RECORD: J.A. BATTS DATE: 9-22

ELEVATION OF GIRDER
 (SEE PARTIAL ELEVATION FOR ADDITIONAL "S" BARS)
 **DO NOT RAKE TOP OF GIRDER IN THIS AREA

DOCUMENT NOT CONSIDERED FINAL UNLESS ALL SIGNATURES COMPLETED