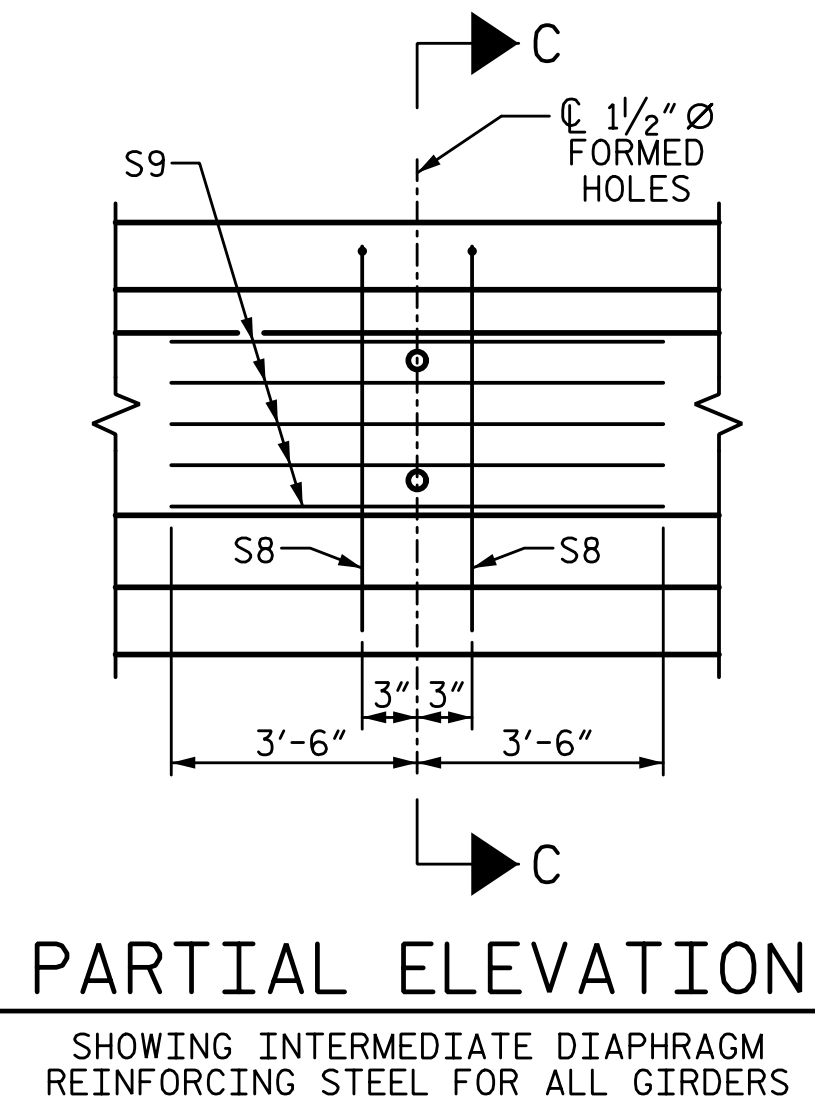
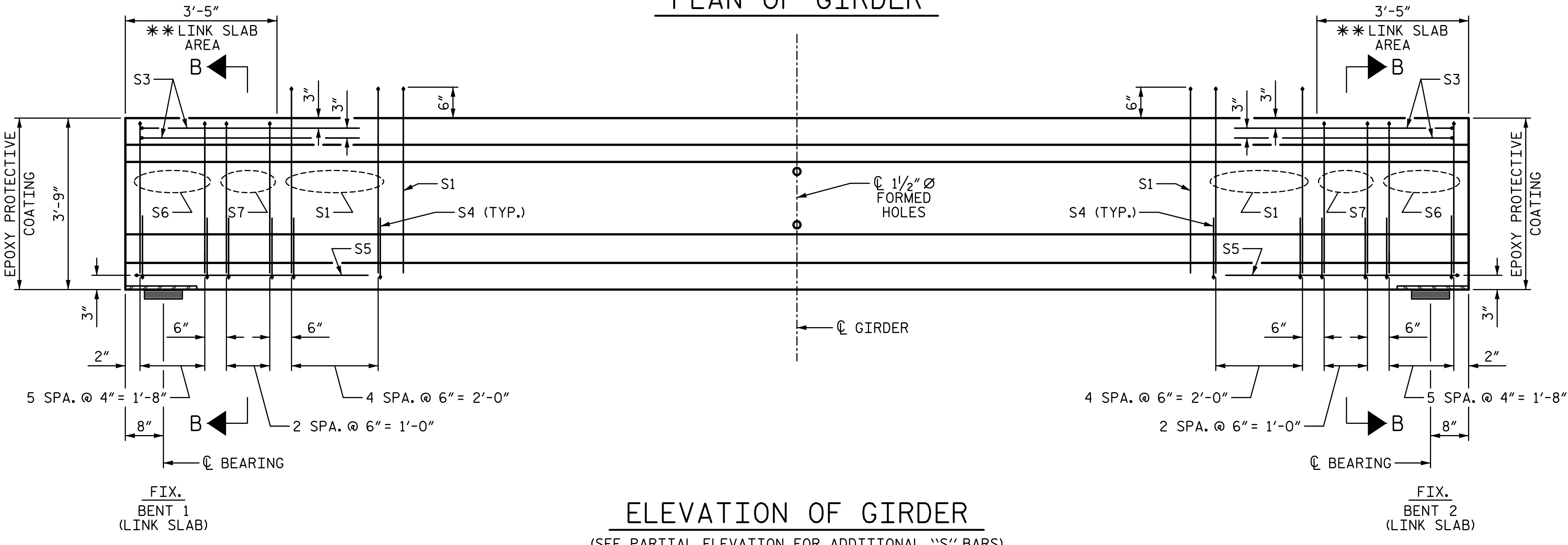
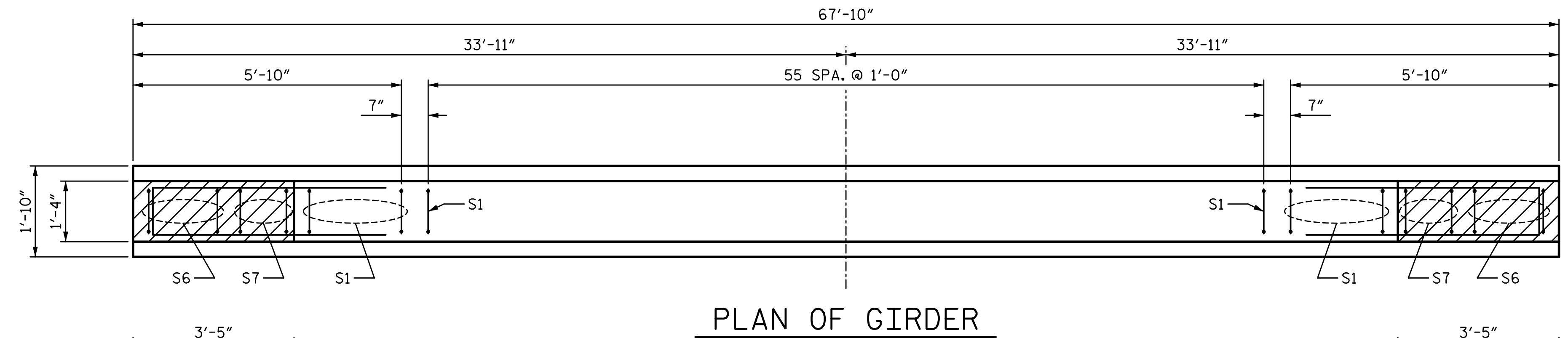
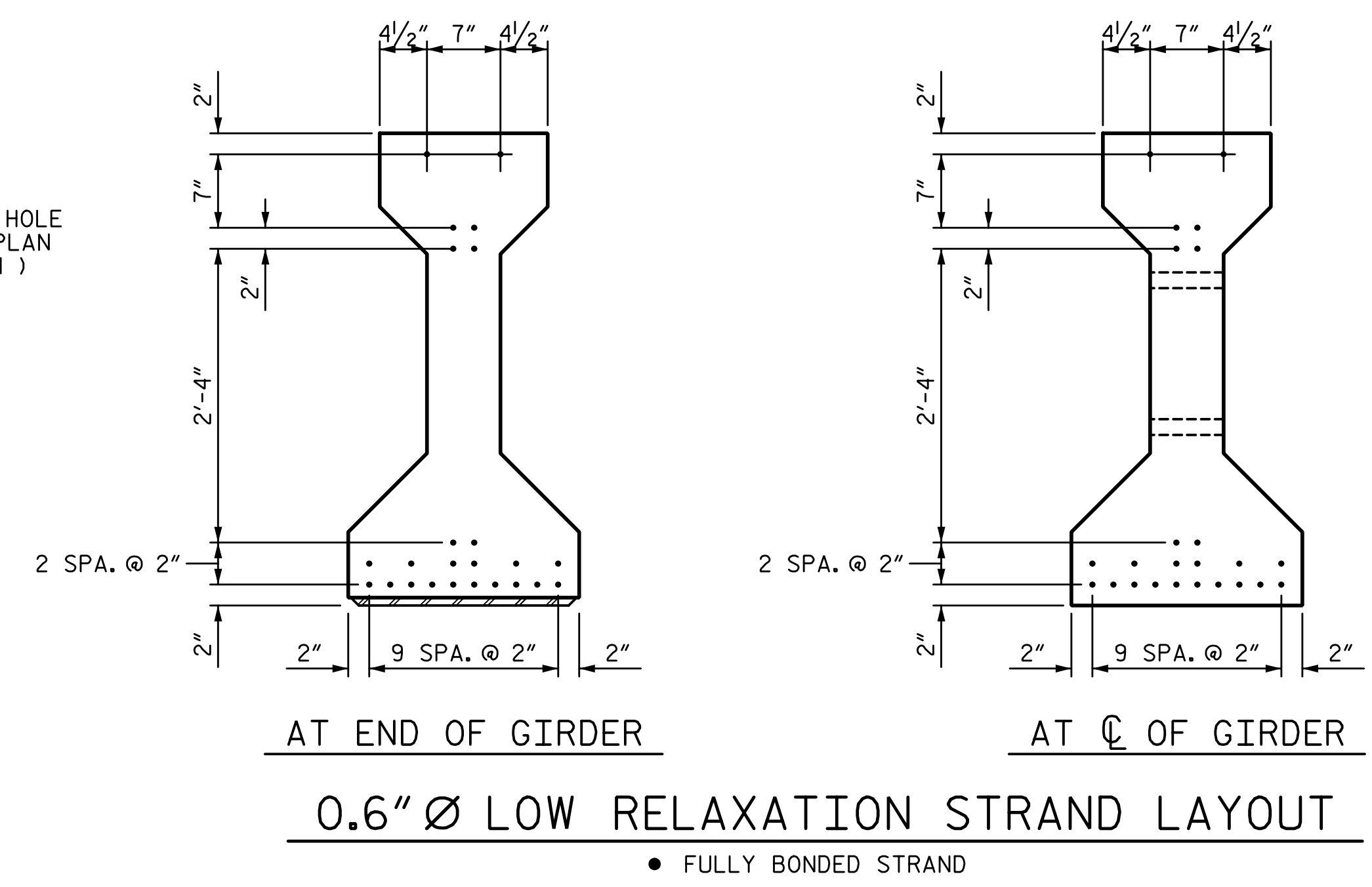
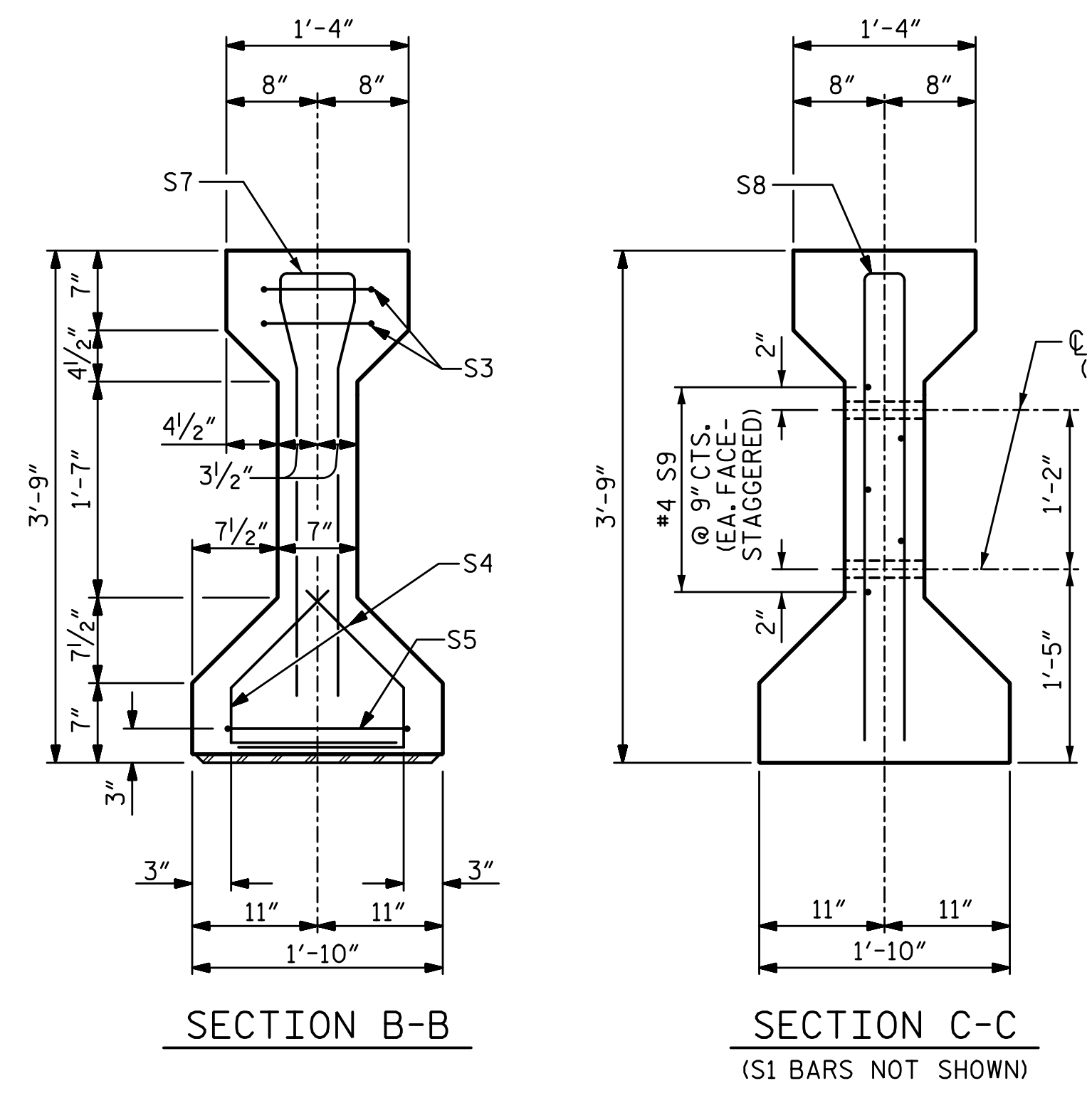


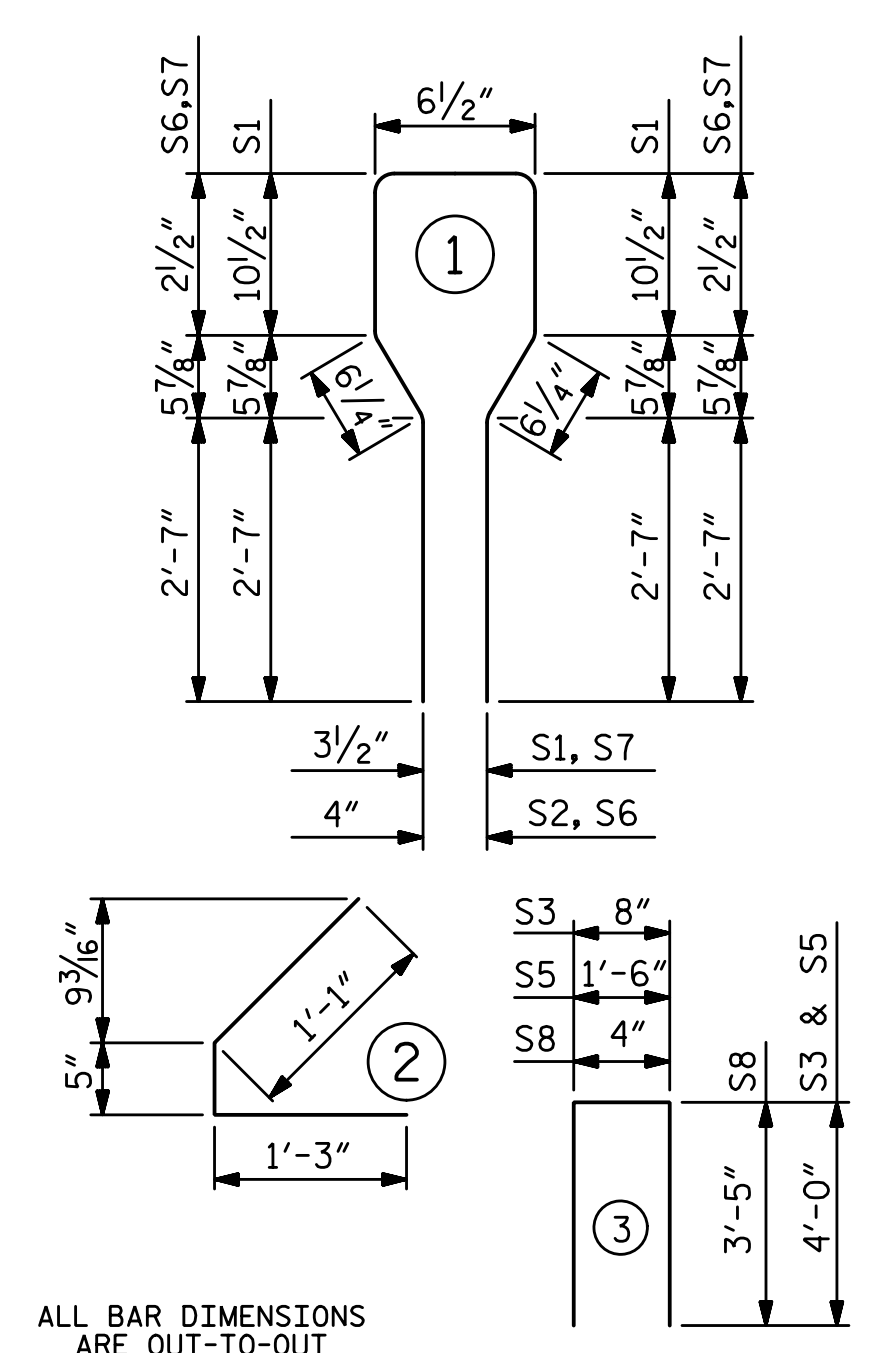
4/6/2023 12:01:54 PM P:\Raleigh\Projects\2018\Division 9 (Mott MacDonald)\U-2729\Structures\Drawings\Final\U2729_SMU_G_330290.dgn



0.6" Ø L. R. GRADE 270 STRANDS		
AREA (SQUARE INCHES)	ULTIMATE STRENGTH (LBS. PER STRAND)	APPLIED PRESTRESS (LBS. PER STRAND)
0.217	58,600	43,950

REINFORCING STEEL FOR ONE GIRDER					
BAR	NUMBER	SIZE	TYPE	LENGTH	WEIGHT
S1	66	#5	1	8'-6"	585
S3	4	#4	3	8'-8"	23
S4	56	#4	2	2'-9"	103
S5	2	#4	3	9'-6"	13
S6	12	#6	1	7'-2"	129
S7	6	#5	1	7'-2"	45
S8	2	#5	3	7'-2"	15
S9	5	#4	STR	7'-0"	23

BAR TYPES



QUANTITIES FOR ONE GIRDER			
	REINFORCING STEEL LB.	7600 PSI CONCRETE C.Y.	0.6" Ø L. R. STRANDS No.
GIRDERS	936	9.8	24

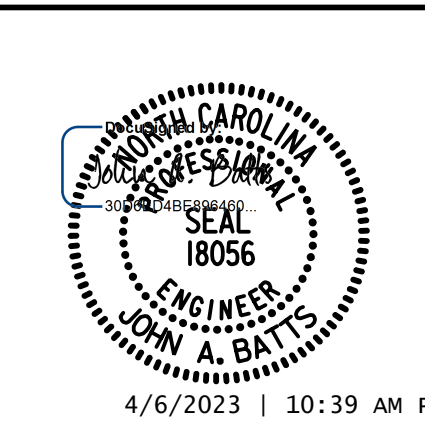
GIRDERS REQUIRED		
NUMBER	LENGTH	TOTAL LENGTH
11	67'-10"	746'-2"

PROJECT NO. U-2729
 FORSYTH COUNTY
 STATION: 33+99.11 -L-
 SHEET 2 OF 4

STATE OF NORTH CAROLINA
 DEPARTMENT OF TRANSPORTATION
 RALEIGH
 SUPERSTRUCTURE
 AASHTO TYPE III
 PRESTRESSED CONCRETE
 GIRDERS
 SPAN B

DRAWN BY: T. BANKOVICH DATE: 9-22
 CHECKED BY: T.J. BEACH DATE: 9-22
 DESIGN ENGINEER OF RECORD: J.A. BATTS DATE: 9-22

ELEVATION OF GIRDER
 (SEE PARTIAL ELEVATION FOR ADDITIONAL "S" BARS)
 **DO NOT RAKE TOP OF GIRDER IN THIS AREA



REVISIONS				SHEET NO.	
NO.	BY:	DATE:	NO.	BY:	DATE:
1			3		
2			4		

DOCUMENT NOT CONSIDERED FINAL UNLESS ALL SIGNATURES COMPLETED