

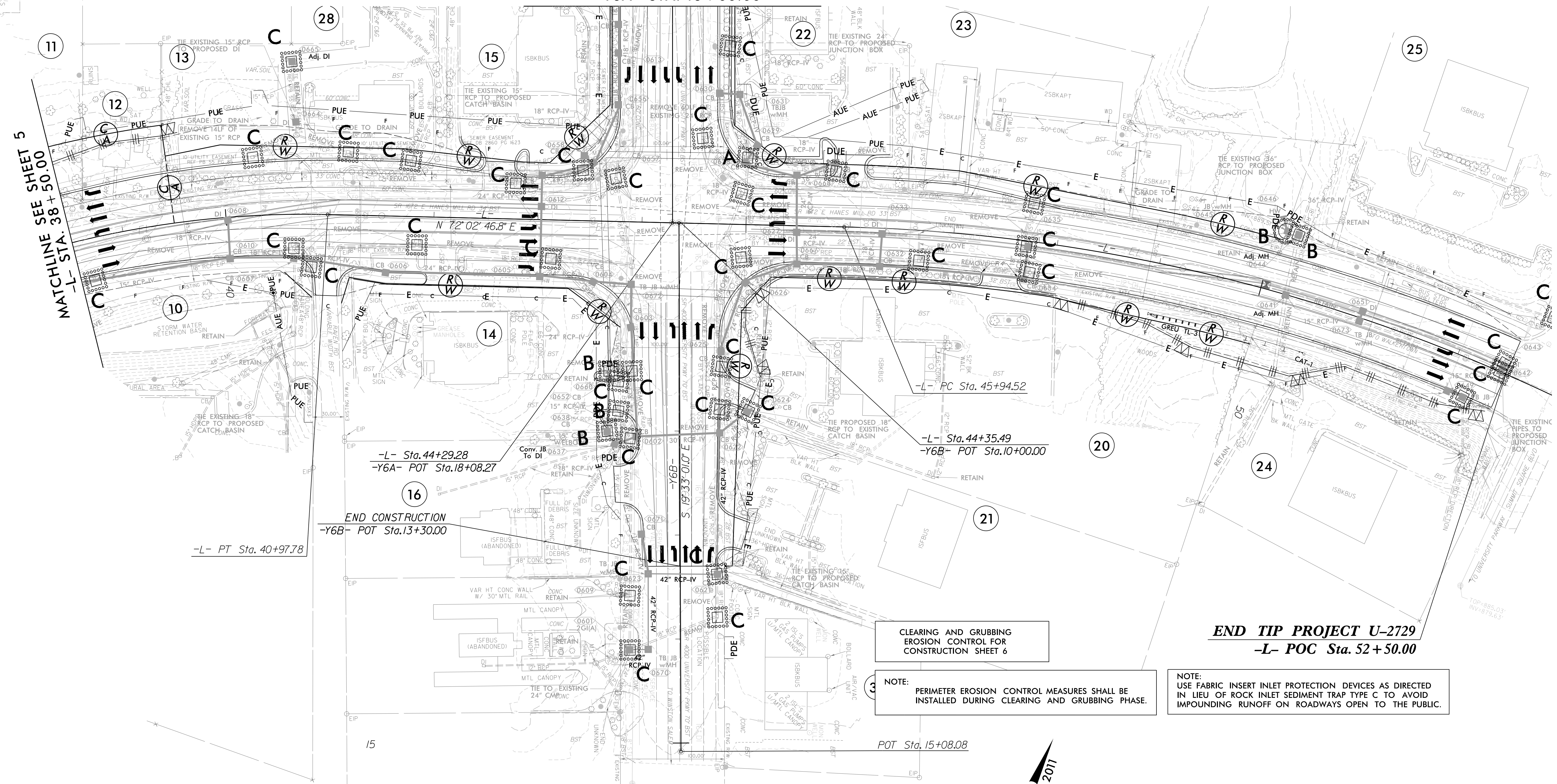
PROJECT REFERENCE NO.	SHEET NO.
U-2729	EC-6/CONST.-6
RW SHEET NO.	
ROADWAY DESIGN ENGINEER	HYDRAULICS ENGINEER

SEE SHEET 2B-4 FOR INTERSECTION DETAILS

-L- SEE PROFILE SHEET 11  
 -Y6A- SEE PROFILE SHEET 15  
 -Y6B- SEE PROFILE SHEET 15

MATCHLINE SEE SHEET 7  
 -Y6A- STA. 16+00.00

MATCHLINE SEE SHEET 5  
 -L- STA. 38+50.00



CLEARING AND GRUBBING  
 EROSION CONTROL FOR  
 CONSTRUCTION SHEET 6

NOTE:  
 PERIMETER EROSION CONTROL MEASURES SHALL BE  
 INSTALLED DURING CLEARING AND GRUBBING PHASE.

NOTE:  
 USE FABRIC INSERT INLET PROTECTION DEVICES AS DIRECTED  
 IN LIEU OF ROCK INLET SEDIMENT TRAP TYPE C TO AVOID  
 IMPOUNDING RUNOFF ON ROADWAYS OPEN TO THE PUBLIC.

END TIP PROJECT U-2729  
 -L- POC Sta. 52+50.00

EXISTING PAVEMENT REMOVAL

8/17/99

3/22/03  
 4:08:27 PM  
 C:\PSH\_CG.dgn