

PROJECT REFERENCE NO.	SHEET NO.
U-2729	EC-4/CONST.-4
RW SHEET NO.	
ROADWAY DESIGN ENGINEER	HYDRAULICS ENGINEER

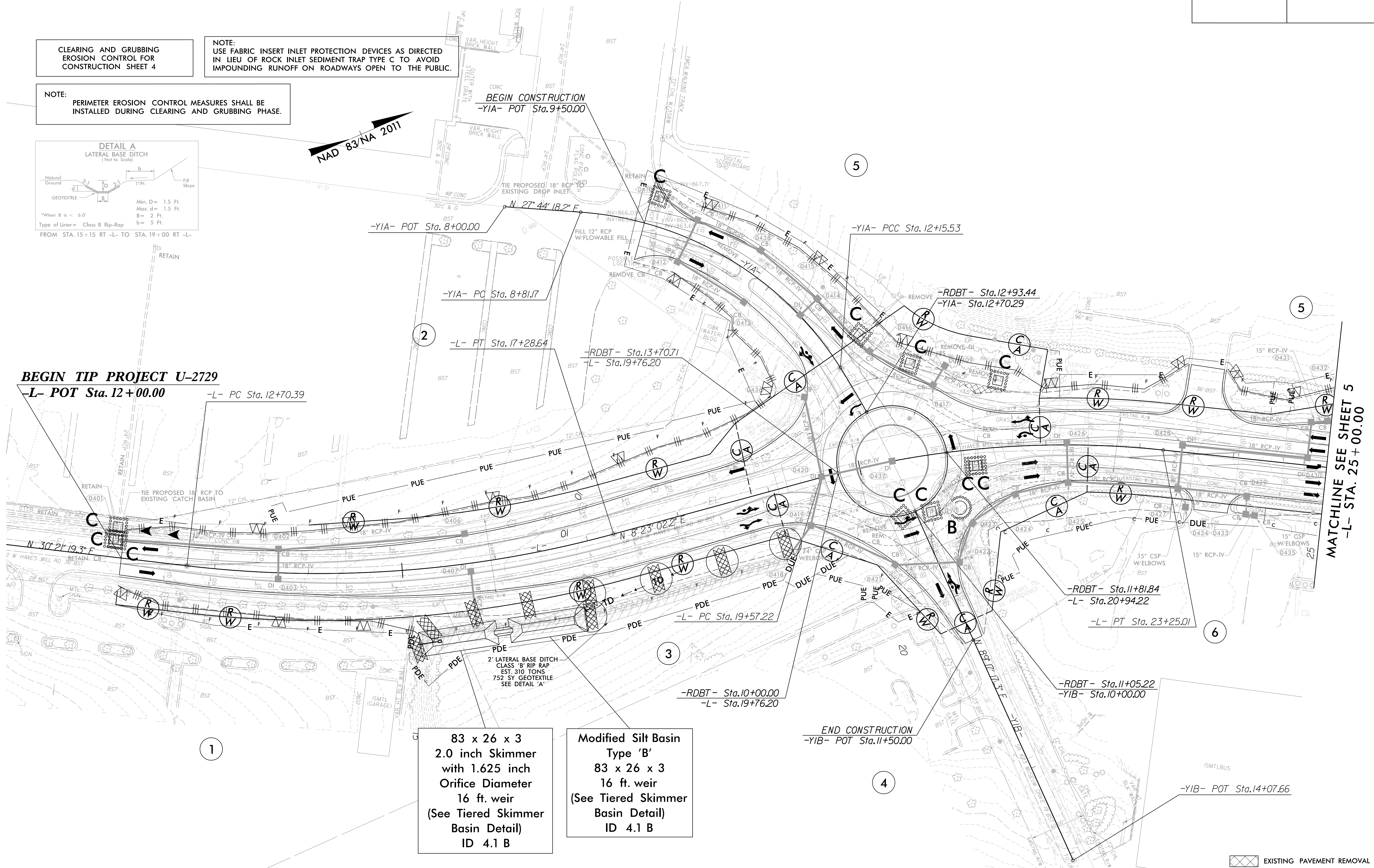
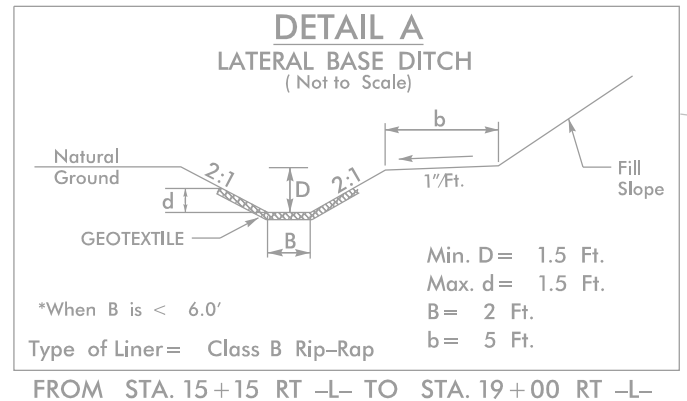
SEE SHEET 2B-1 FOR INTERSECTION DETAILS
SEE SHEET 2B-5 THRU 2B-8 FOR ISLAND DETAILS

-L- SEE PROFILE SHEET 10
-YIA- SEE PROFILE SHEET 11
-YIB- SEE PROFILE SHEET 11
-RDBT- SEE PROFILE SHEET 15

CLEARING AND GRUBBING
EROSION CONTROL FOR
CONSTRUCTION SHEET 4

NOTE:
USE FABRIC INSERT INLET PROTECTION DEVICES AS DIRECTED
IN LIEU OF ROCK INLET SEDIMENT TRAP TYPE C TO AVOID
IMPOUNDING RUNOFF ON ROADWAYS OPEN TO THE PUBLIC.

NOTE:
PERIMETER EROSION CONTROL MEASURES SHALL BE
INSTALLED DURING CLEARING AND GRUBBING PHASE.



83 x 26 x 3
2.0 inch Skimmer
with 1.625 inch
Orifice Diameter
16 ft. weir
(See Tiered Skimmer
Basin Detail)
ID 4.1 B

Modified Silt Basin
Type 'B'
83 x 26 x 3
16 ft. weir
(See Tiered Skimmer
Basin Detail)
ID 4.1 B

EXISTING PAVEMENT REMOVAL

8/17/99

3/2/2003
C-PSH.CG.dgn
4/16/02