

Location and Surveys

PROJECT SURVEYOR



DOCUMENT NOT CONSIDERED FINAL UNLESS ALL SIGNATURES COMPLETED

-L-	-YIA-	-RDBT-
PI Sta 15+02.37 Δ = 2° 58' 17.1" (LT) D = 4' 47' 40.7" L = 458.25' T = 231.98' R = 1,195.00' SE = 0.04 RO = 192' TR = 96'	PI Sta 21+43.26 Δ = 2° 17' 09.8" (RT) D = 5' 47' 14.8" L = 367.04' T = 186.04' R = 990.00' SE = 0.04 RO = 192' TR = 96'	PI Sta 10+61.75 Δ = 53° 39' 43.2" (RT) D = 16' 02' 57.3" L = 334.36' T = 180.58' R = 357.00' SE = 0.04 RO = 148' TR = 74'
PI Sta 12+42.92 Δ = 3° 08' 15.1" (RT) D = 5' 43' 46.5" L = 54.76' T = 27.39' R = 1,000.00' SE = 0.04 RO = 148' TR = 74'	PI Sta 10+73.09 Δ = 102° 10' 45.6" (LT) D = 97' 06' 41.4" L = 105.22' T = 73.09' R = 59.00'	PI Sta 11+50.01 Δ = 74° 24' 20.1" (LT) D = 97' 06' 41.4" L = 76.62' T = 44.79' R = 59.00'
PI Sta 12+63.61 Δ = 108° 22' 36.7" (LT) D = 97' 06' 41.4" L = 111.60' T = 81.77' R = 59.00'	PI Sta 13+38.74 Δ = 75° 02' 08.0" (LT) D = 97' 06' 41.4" L = 77.27' T = 45.30' R = 59.00'	

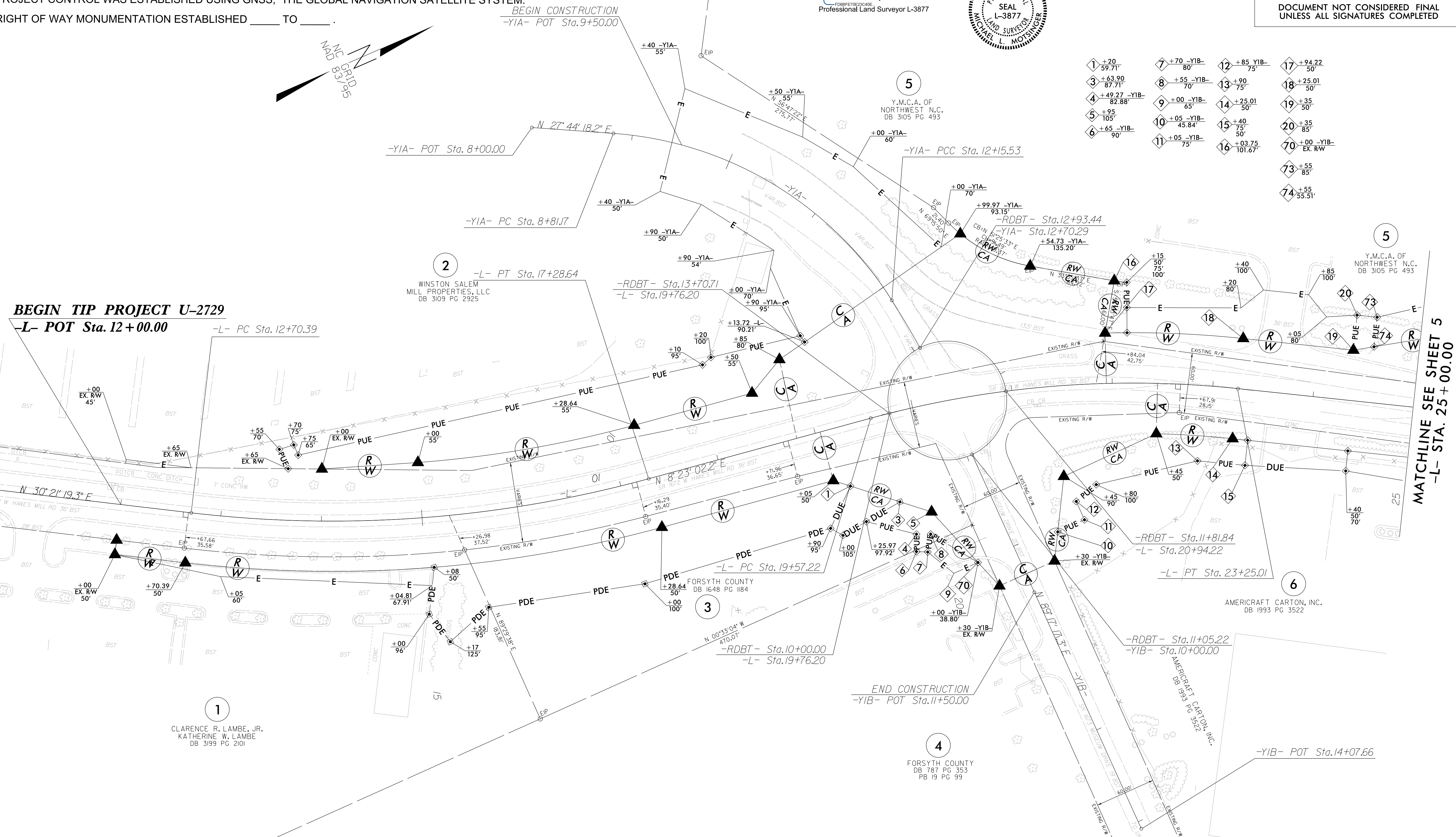
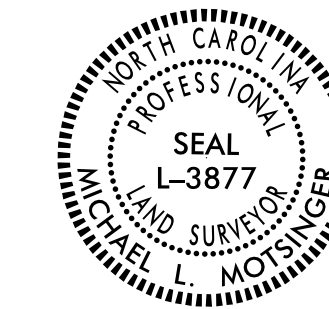
NOTES:

- IF FURTHER INFORMATION REGARDING PROJECT CONTROL IS NEEDED PLEASE CONTACT THE LOCATION AND SURVEYS UNIT.
- PROJECT CONTROL WAS ESTABLISHED USING GNSS, THE GLOBAL NAVIGATION SATELLITE SYSTEM.
- RIGHT OF WAY MONUMENTATION ESTABLISHED \_\_\_\_\_ TO \_\_\_\_\_.

I, Michael L. Motsinger, certify that the right of way and permanent easement monumentation for this project shown herein was completed under my direct and responsible charge from an actual survey made under my supervision; that all horizontal closures had a minimum ratio of precision of 1:10,000 (Class A). Field work was performed from November 2019 to December 2019, and all coordinates are based on NAD83/2011; That this survey was performed to meet the requirements of 21NCAC 56.1600 as applicable.

This 9th day of March, 2023.

DocuSigned by:  
*Michael L. Motsinger*  
Professional Land Surveyor L-3877



1 +20 -YIB- 59.71'	7 +70 -YIB- 80'	12 +85 -YIB- 75'	17 +94.22 50'
2 +63.90 87.71'	8 +55 -YIB- 70'	13 +90 -YIB- 75'	18 +25.01 50'
3 +49.27 -YIB- 82.88'	9 +00 -YIB- 65'	14 +25.01 50'	19 +35 50'
4 +95 105'	10 +05 -YIB- 45.84 50'	15 +40 -YIB- 75'	20 +35 85'
5 +65 -YIB- 90'	11 +05 -YIB- 75'	16 +03.75 101.67'	21 +00 -YIB- EX. RW
			22 +55 85'
			23 +55 85'
			24 +55 55.51'

REVISIONS

03-MAR-2023 10:35  
 G:\Urban\2023\U-2729\Right of Way Staking\Julie\files\tobechecked\U2729\_1s\_rw04.dgn  
 AT LS-3286711  
 mmotsinger

MATCHLINE SEE SHEET 5  
 -L- STA. 25+00.00