

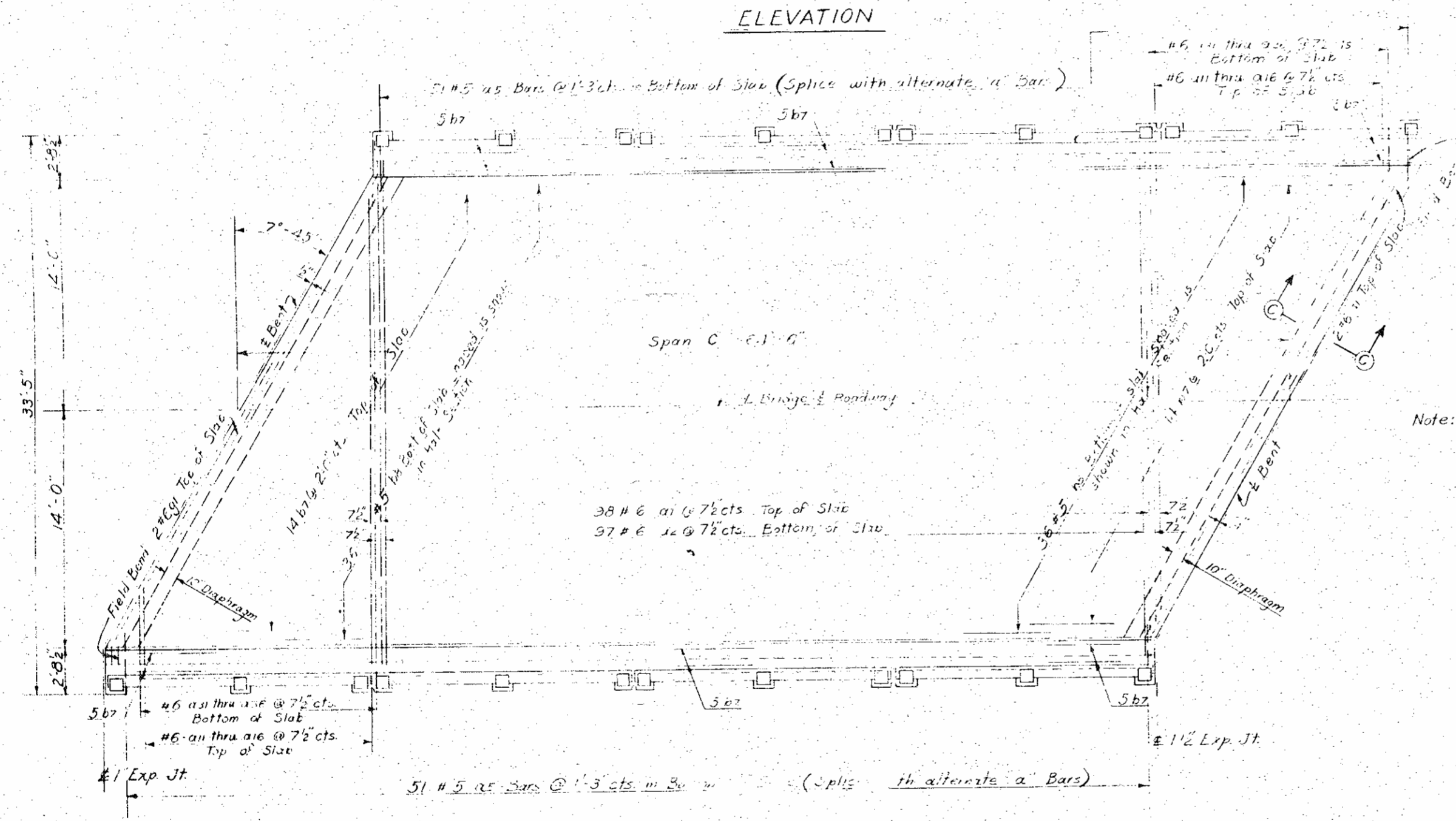
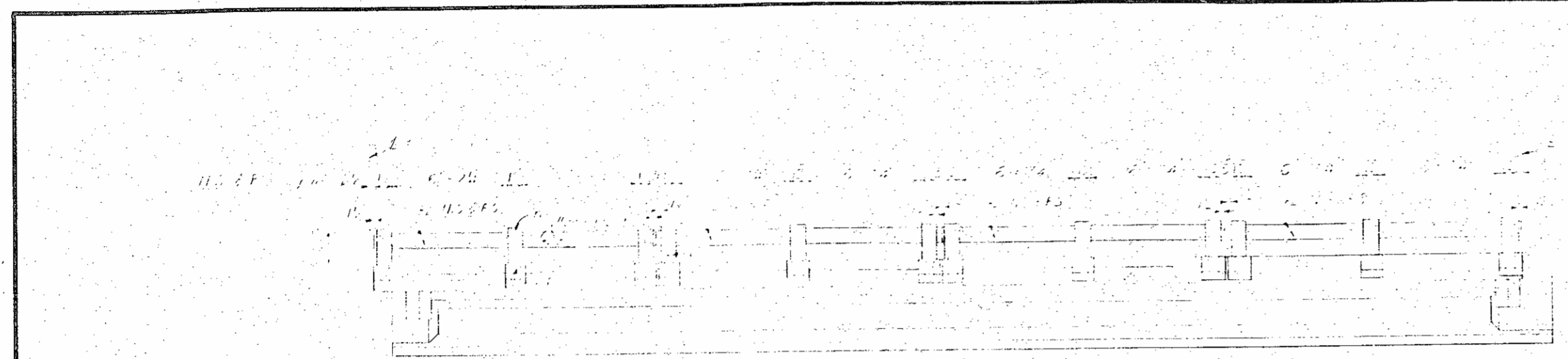
PROJECT NO.	8.17374
111(17)	
Weight	
11"	1938
10"	320
10"	717
2"	6522
8"	265
3"	907
0"	545
9"	285
8"	357
10"	58
7"	139
11"	82
11"	75
10"	50
11"	57
11"	383
11"	584
11"	434
9"	317
9"	568
5"	418
654 Lbs	
3 Cu. Yds	
(45")	
1 in Fl V	

17374
NTY
7.69

DESIGN
S
IRBS

53
83

NO. ROAD REGION	STATE	PROJECT NO.
3	N.C.	8.17374
I. A. PROJECT F-111 C-7		
48		271



Note: For Section C-C and Post Details, see Sheet S-16

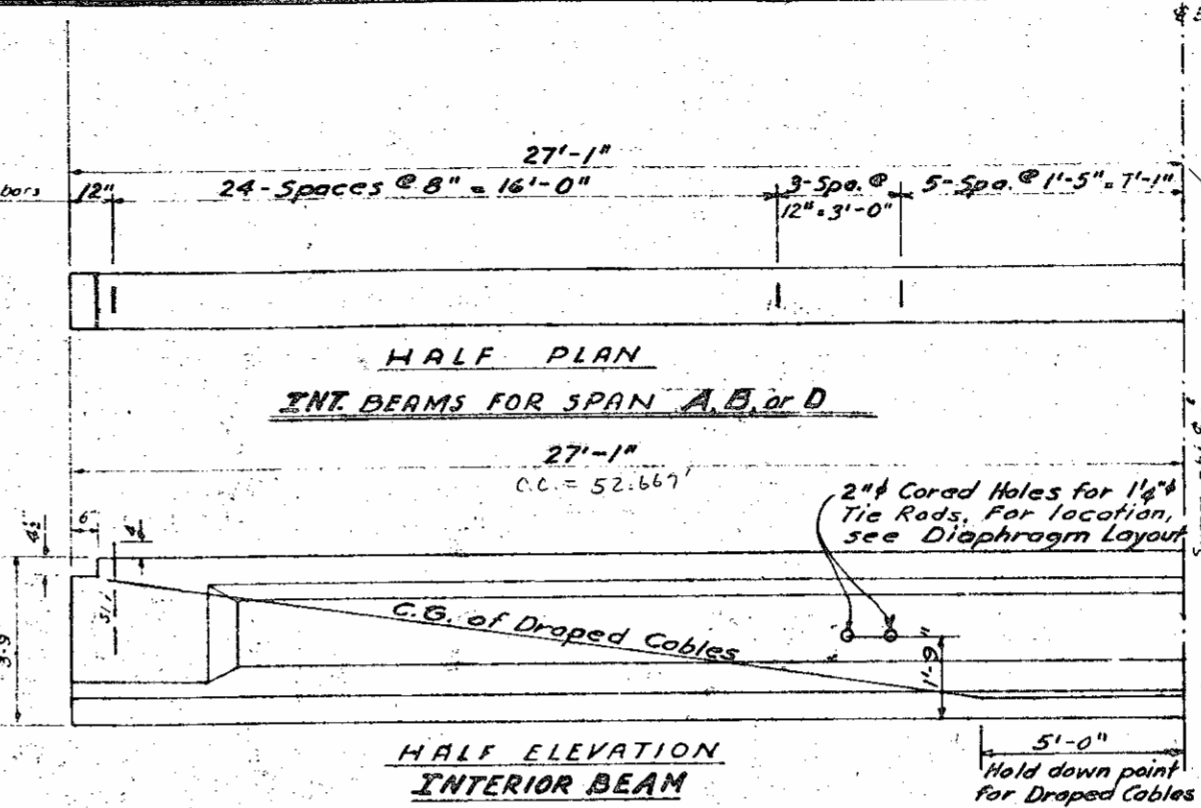
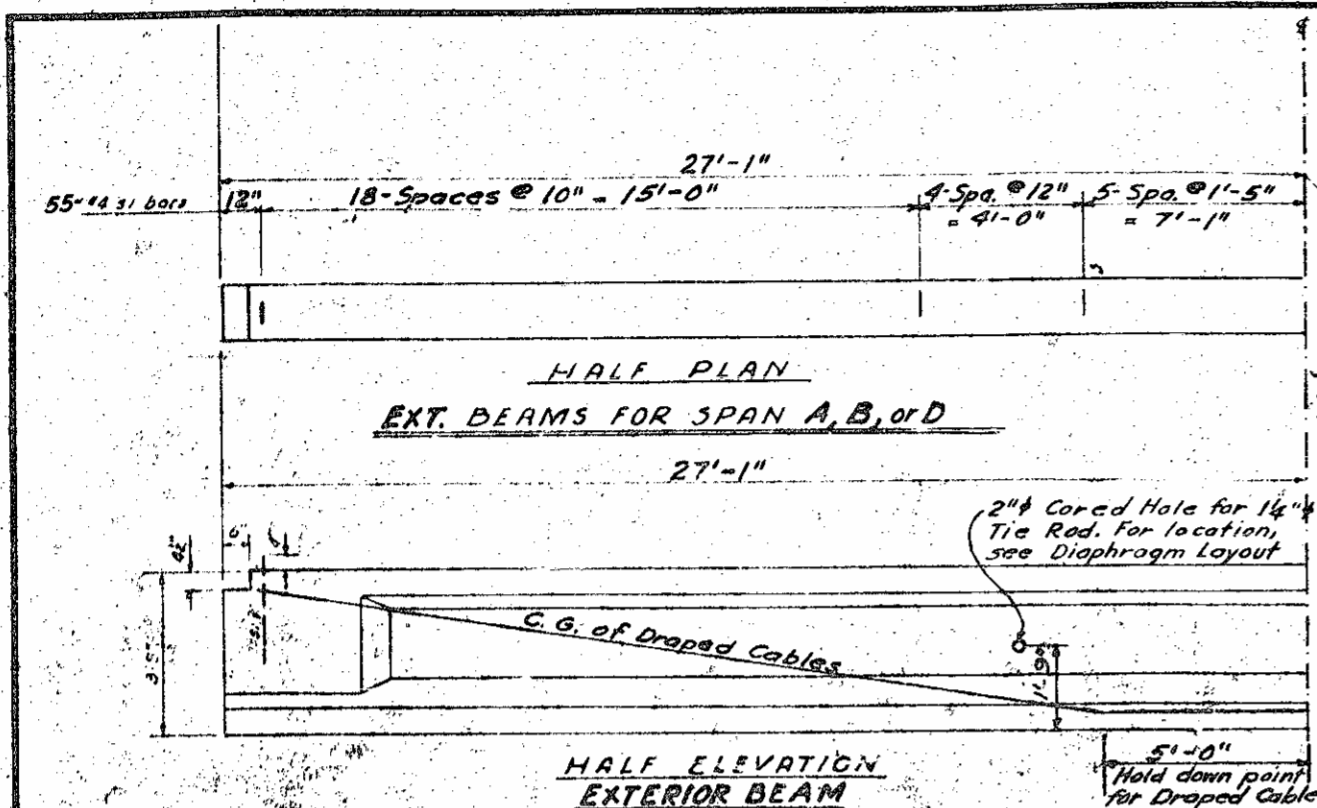
PROJECT NO. 8.17374...
FORSYTH COUNTY
STATION: 371+17.69
SPAN "C"

STATE OF NORTH CAROLINA	
STATE HIGHWAY COMMISSION	
PRESTRESSED CONCRETE GIRDERS	
SUPERSTRUCTURE	
WITH RC FLOOR & RAIL	
1 @ 64' 6" SPAN	
28' ROADWAY 7:45' L.H. SKEW	
MAY, 1961	
REVISIONS	
1	
2	
3	
4	
5	
6	
7	
8	
9	
10	
11	
12	
13	
14	
15	
16	
17	
18	
19	
20	
21	
22	
23	
24	
25	
26	
27	
28	
29	
30	
31	
32	
33	
34	
35	
36	
37	
38	
39	
40	
41	
42	
43	
44	
45	
46	
47	
48	
49	
50	
51	
52	
53	
54	
55	
56	
57	
58	
59	
60	
61	
62	
63	
64	
65	
66	
67	
68	
69	
70	
71	
72	
73	
74	
75	
76	
77	
78	
79	
80	
81	
82	
83	
84	
85	
86	
87	
88	
89	
90	
91	
92	
93	
94	
95	
96	
97	
98	
99	
100	

DRAWN BY: [Signature] DATE: [Date]
CHECKED BY: [Signature] DATE: [Date]

PROJECT NO. 8.17374
 DATE 5/17/50
 SHEET NO. 5-5
 TOTAL SHEETS 63
 1/4" Weight
 1094
 2478
 118
 136
 335
 26
 55
 191
 150
 166
 220 Lbs
 5 Cu Yds
 (45')
 Lin Ft.
 7374
 VTY
 69
 DIVISION
 SECTIONS

STATE	PROJECT NO.
N. C.	8.17374
F.A. Proj. F-III (17)	
50	271



NOTE

All prestress strands to be 1/2 Stress Relieved Cables. Each cable to be prestressed at 18500 lbs. 250 ST.

Cables to be cut off within 1" of end of beams.

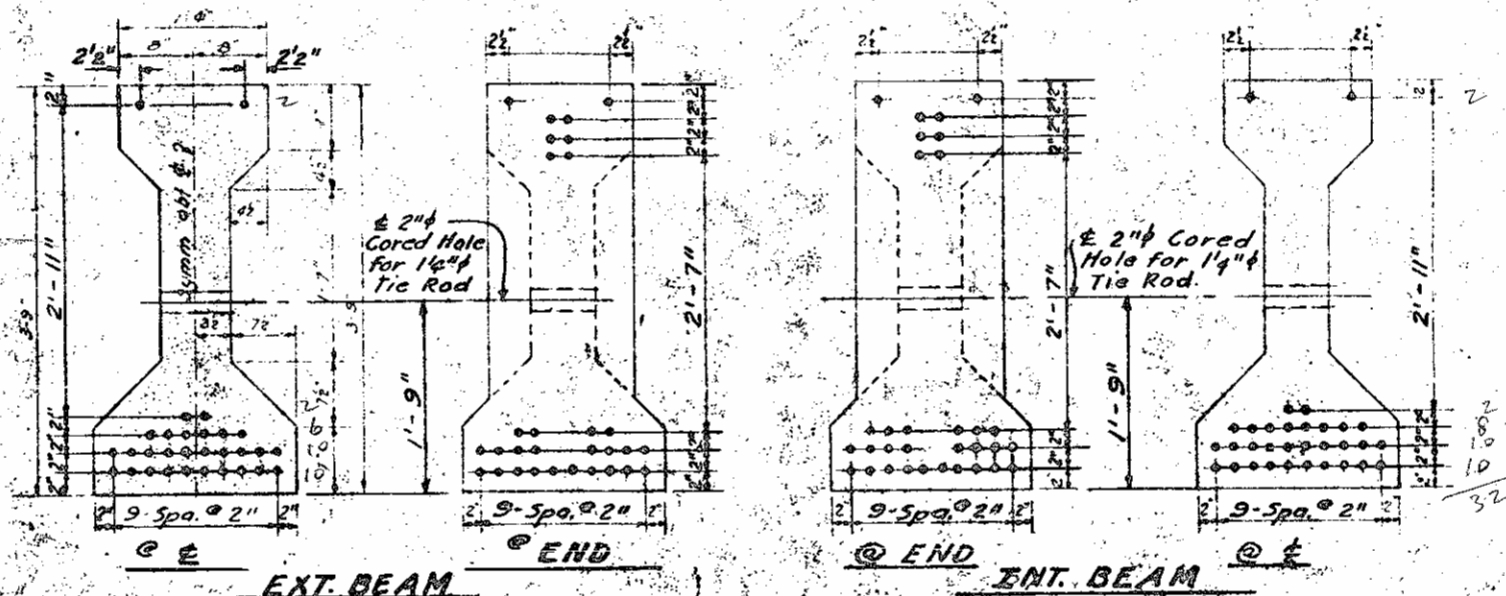
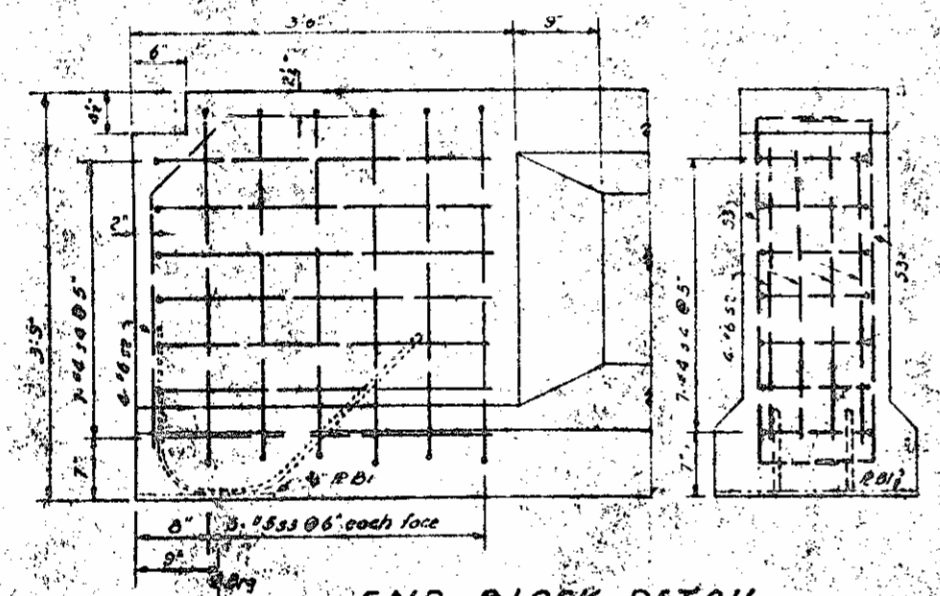
No surface finish will be required for prestressed concrete beams, however, the outside face of exterior beams shall be carefully cleaned of drippings and other discolorations.

If cable stress is relieved by burning, the following order of burning shall be strictly adhered to:

- (1) Bottom Cables 1-1
- (2) Draped Cables 2-2
- (3) Draped Cables 3-3
- (4) Bottom Cables 4-4
- (5) Draped Cables 5-5
- (6) Top Cables 6-6
- (7) Release Hold Downs

Each pair of cables 1-1 thru 16-16 shall be burned at ends of bed and between all girders before burning any of the rest of cables.

SECTION SHOWING PATTERN CABLES FOR INTERIOR BEAM
See Specifications and Error Sheets.

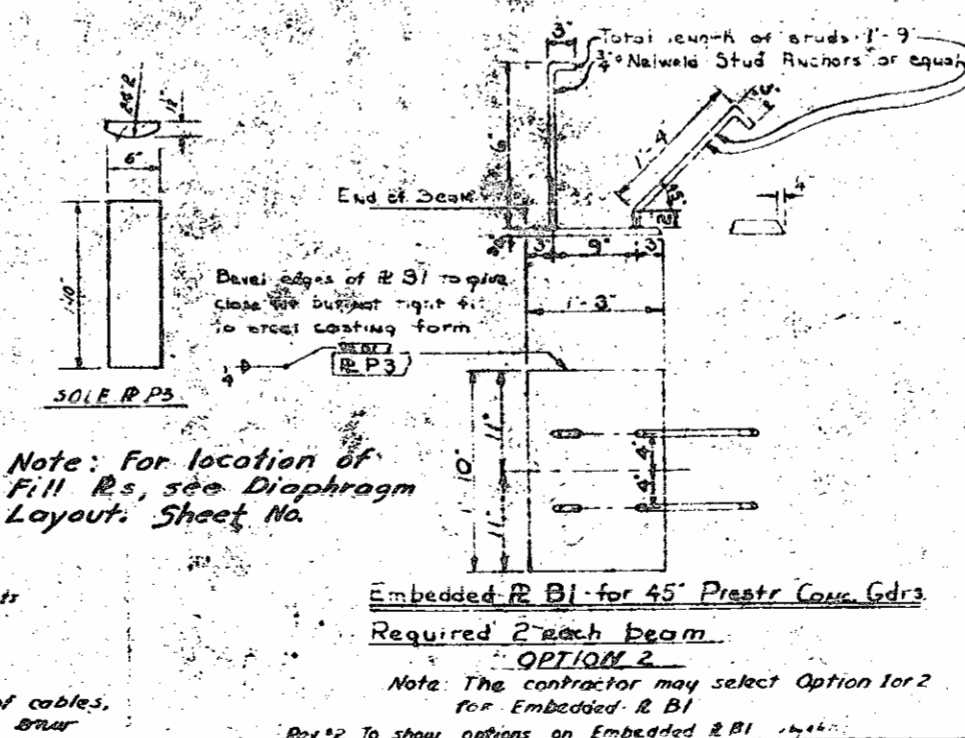
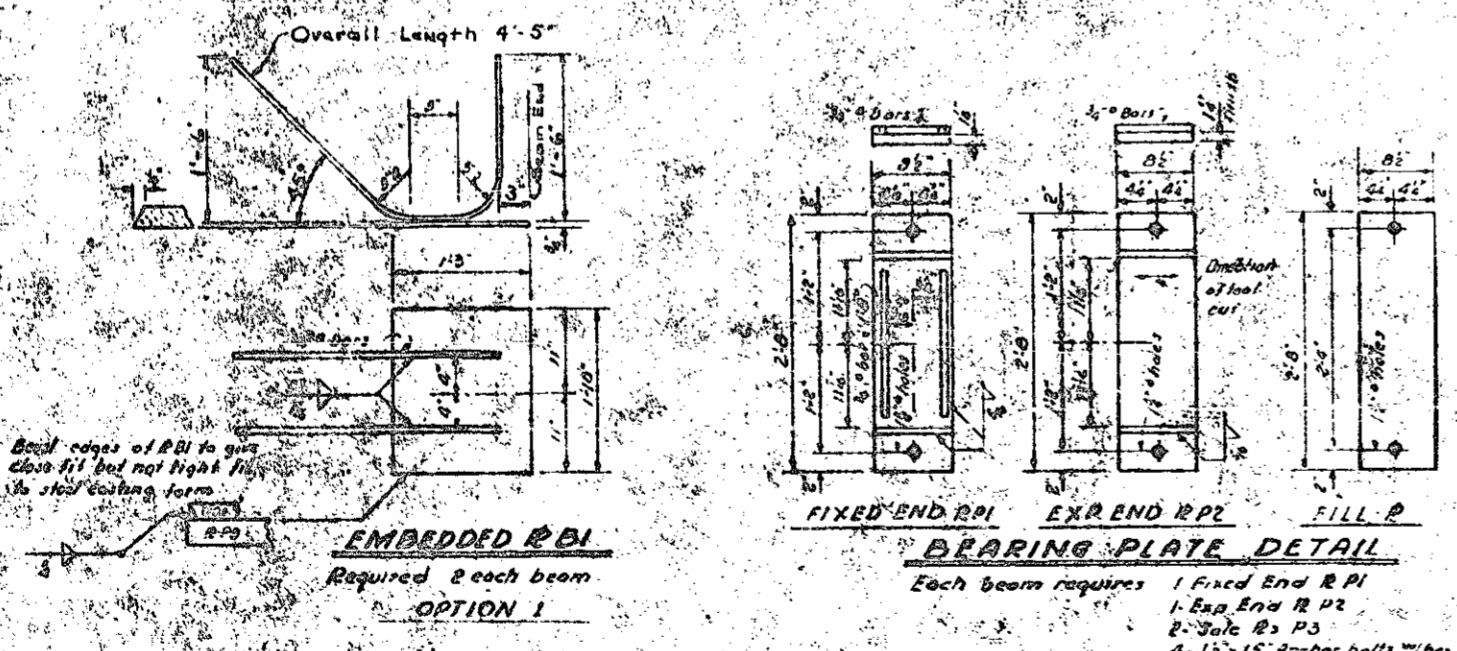
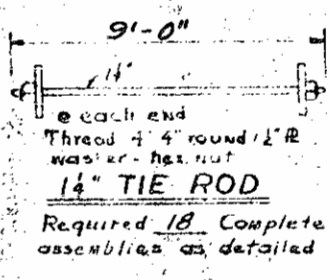


REINFORCING STEEL FOR ONE(1) BEAM

Bar	No.	Size	Use	Length	Weight
Int. Beam	31	65	44	8'-0"	36.9
Ext. Beam	31	55	44	7'-0"	31.2
Beam	31	44	7	8'-6"	3.6
Beam	31	44	7	7'-0"	3.6
Beam	32	8	16	8	4.8
Beam	33	24	15	6	1.38
Beam	34	14	14	6	6.9

Bending Diagrams

Dimensions are out to out



QUANTITIES ONE(1) BEAM

Reinforcing Steel	Int. Beam	Ext. Beam	Beam	Beam
Int. Beam	632	575		
Ext. Beam				
Beam				
Beam				
5000psi Concrete	8.19	8.19		
Int. Beam				
Ext. Beam				
Beam				
Beam				
1/2 S.R. Cables	32	30		
Int. Beam				
Ext. Beam				
Beam				
Beam				

BEAMS REQUIRED

Beam	Length
12 @ 54'-2" length	650 LF
0 @ length	LF
0 @ length	LF
0 @ length	LF

PROJECT NO. 8.17374
 FORSYTH COUNTY
 STATION: 371+17.69
 INT. & EXT. BEAMS
 SPANS A-B-D

STATE OF NORTH CAROLINA
 STATE HIGHWAY COMMISSION
 RALEIGH
 STANDARD
 45" PRESTRESSED
 CONCRETE BEAM
 MAY 1958

Assembly
 DRAWN BY
 CHECKED BY
 DATE

Reviso to add notes and sketch regarding burning of cables, used to eliminate stress. Reviso: Jan. 6, 1960 J.E.N. / B.W.

Sheet Ret.

