

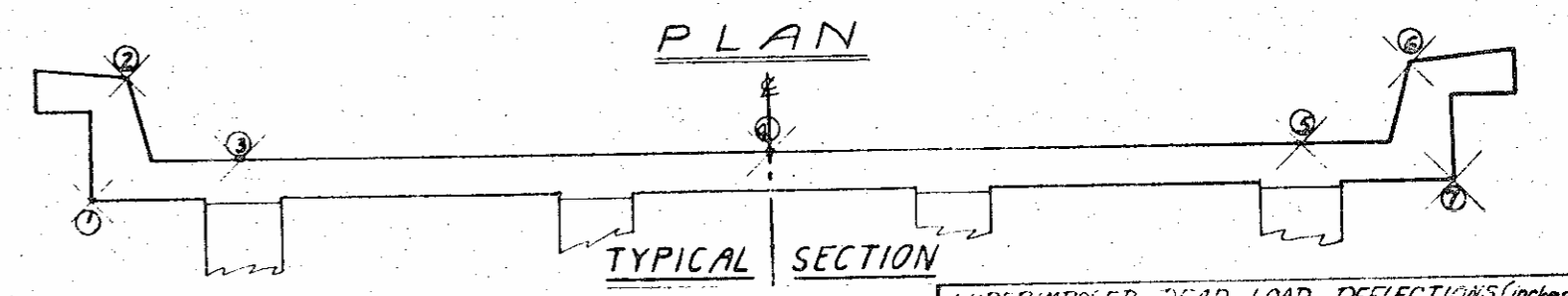
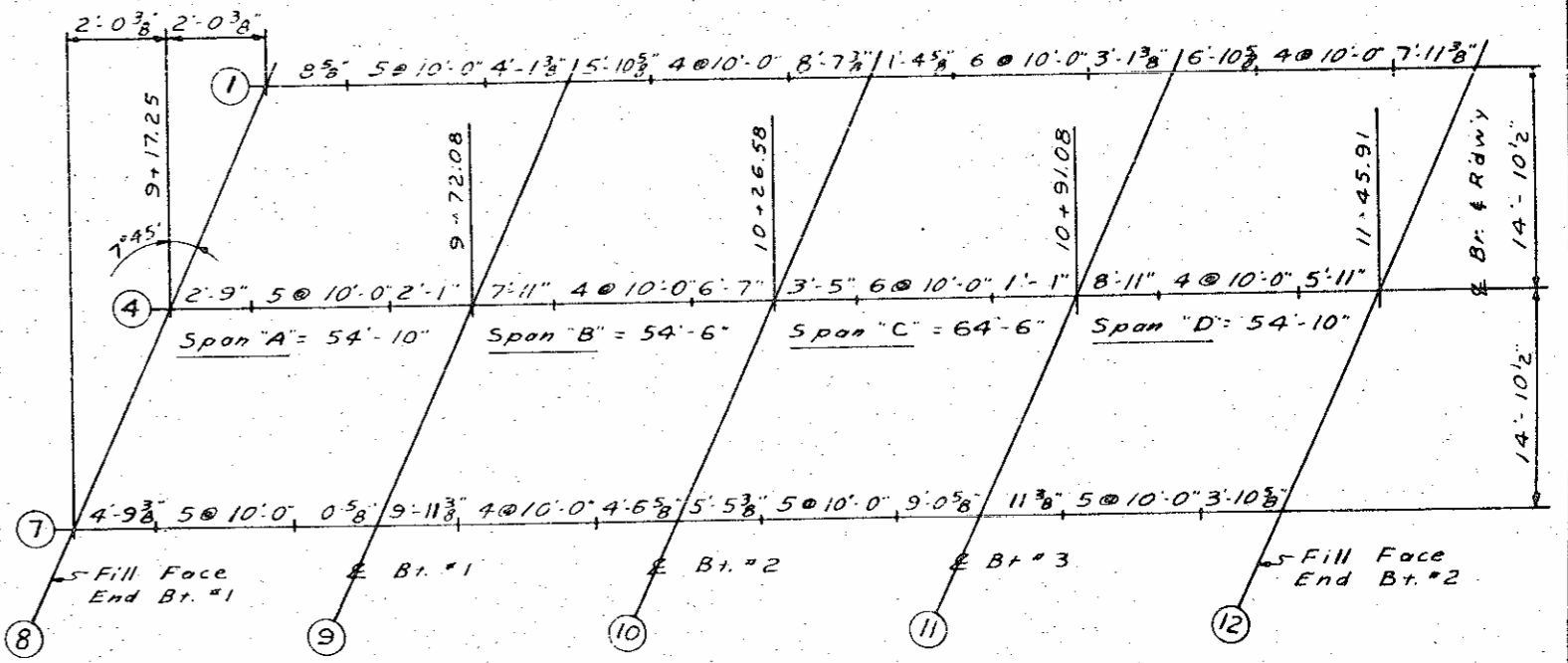
STATE PROJECT NO. 817374
 COUNTY 1169 EMED
 SHEET 44 - 271

LOADING
 FINISH
 SIDE
 WALL
 AND
 MAINTAINED

817374
 COUNTY 1169 EMED
 CAROLINA COMMISSION
 PROJECT BETWEEN
 5-1
 83

Column 1 Bottom of overhang	Column 2 Top of curb	Column 3 E of Beam	Column 4 E of Roadway	Column 5 E of Beam	Column 6 Top of curb	Column 7 Bottom of overhang
Dist. Elev. Fill Face 8' 5" 912.298 9+20	Dist. Elev. Begin. ab. 2' 9" 913.110 9+20	Dist. Elev. End Face 2' 9" 913.110 9+20	Elev. E of Roadway 913.110 9+20 138 9+20 237 330 497 584 665 741 9+70 574 9+70 589 E Br. #1 674 9+80 709 767 821 912.988 913.035 10+20 6' 7" 896 E Br. #2 3' 5" 910 10+30 346 913.076 914.001 920 934 942 10+90 1' 11" 942 E Br. #3 8' 11" 944 11+00 940 931 914.216 913.996 11+40 5' 11" 913.981 Fill Face	Dist. Elev. End Face 4' 9" 912.567 9+20 494 497 584 665 741 9+70 741 E Br. #1 811 9+80 876 934 912.988 913.035 10+20 4' 6" 855 E Br. #2 5' 5" 877 10+30 113 143 168 187 201 10+80 9' 0" 208 E Br. #3 113 209 10+90 211 207 198 183 163 11+40 3' 10" 913.153 Fill Face	Dist. Elev. End Face 4' 9" 912.567 9+20 494 497 584 665 741 9+70 741 E Br. #1 811 9+80 876 934 912.988 913.035 10+20 4' 6" 855 E Br. #2 5' 5" 877 10+30 113 143 168 187 201 10+80 9' 0" 208 E Br. #3 113 209 10+90 211 207 198 183 163 11+40 3' 10" 913.153 Fill Face	Dist. Elev. End Face 4' 9" 912.567 9+20 494 497 584 665 741 9+70 741 E Br. #1 811 9+80 876 934 912.988 913.035 10+20 4' 6" 855 E Br. #2 5' 5" 877 10+30 113 143 168 187 201 10+80 9' 0" 208 E Br. #3 113 209 10+90 211 207 198 183 163 11+40 3' 10" 913.153 Fill Face

GRADE DATA
 +2.60% -1.934%
 P.I. Sta. 10+40.0
 P.I. Elev. 918.48
 Length of Curve 800'
 G1 = +2.60% G2 = -1.934%



Elevations shown in these tables are final required elevations of the completed structure. In setting out forms, foundations and access elevations, corrections must be made for deflections where required.

For columns A through D, points are at 2' intervals normal to E of roadway from left gutter line to right gutter line.

Column 8 Fill Face of E.B. 1	Column 9 E of Bent 1	Column 10 E of Bent 2	Column 11 E of Bent 3	Column 12 Fill Face of E.B. 2
Point Elev. Rt. Gutter 912.984 913.018 913.051 913.074 913.093 913.106 913.108 913.110 913.103 913.095 913.076 913.052 913.024 912.985	Point Elev. Rt. Gutter 913.457 913.492 913.526 913.550 913.569 913.583 913.586 913.589 913.582 913.575 913.557 913.535 912.985	Point Elev. Rt. Gutter 913.758 913.794 913.829 913.854 913.874 913.888 913.892 913.896 913.890 913.884 913.867 913.845 912.985	Point Elev. Rt. Gutter 913.897 913.934 913.969 913.995 914.017 914.032 914.037 914.032 914.016 913.994 913.968 913.932	Point Elev. Rt. Gutter 913.829 913.867 913.904 913.931 913.952 913.969 913.975 913.981 913.977 913.972 913.957 913.937 913.911 913.876

SUPERIMPOSED DEAD LOAD DEFLECTIONS (inches)				
Int.	SPAN A	SPAN B	SPAN C	SPAN D
Ext.	5/16"	5/16"	5/8"	5/16"

PROJECT No. 8.17374
 FORSYTH COUNTY
 STATION: 371+17.69 E. Med.

STATE OF NORTH CAROLINA
 STATE HIGHWAY COMMISSION
 RALEIGH
 ELEVATIONS FOR SETTING UP FORMS AND SCREEDS

1961
 SHEET 5/18
 TOTAL SHEETS 83

RECORDED BY: [Signature] DATE: 6/94/96
 CHECKED BY: [Signature] DATE: 6/94/96

8.17374
271

14'-10 1/2"
14'-10 1/2"

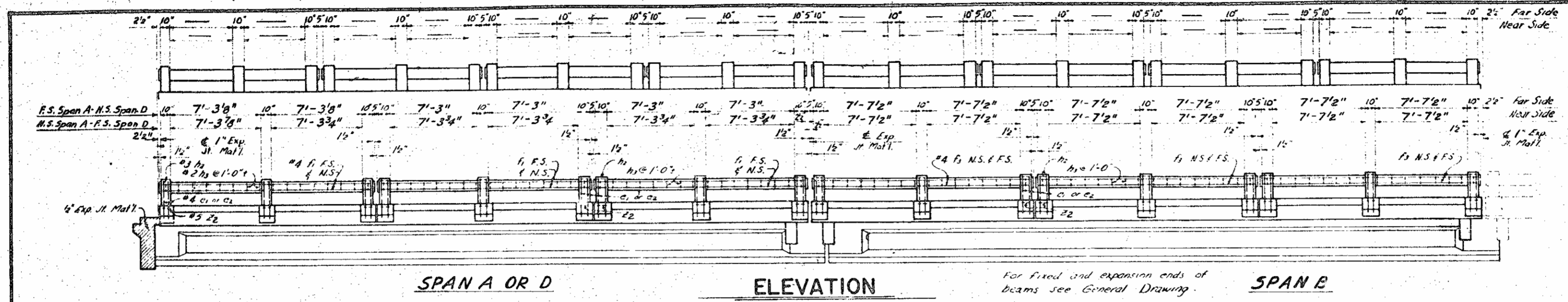
7374

7374
COUNTY
59 & Med.

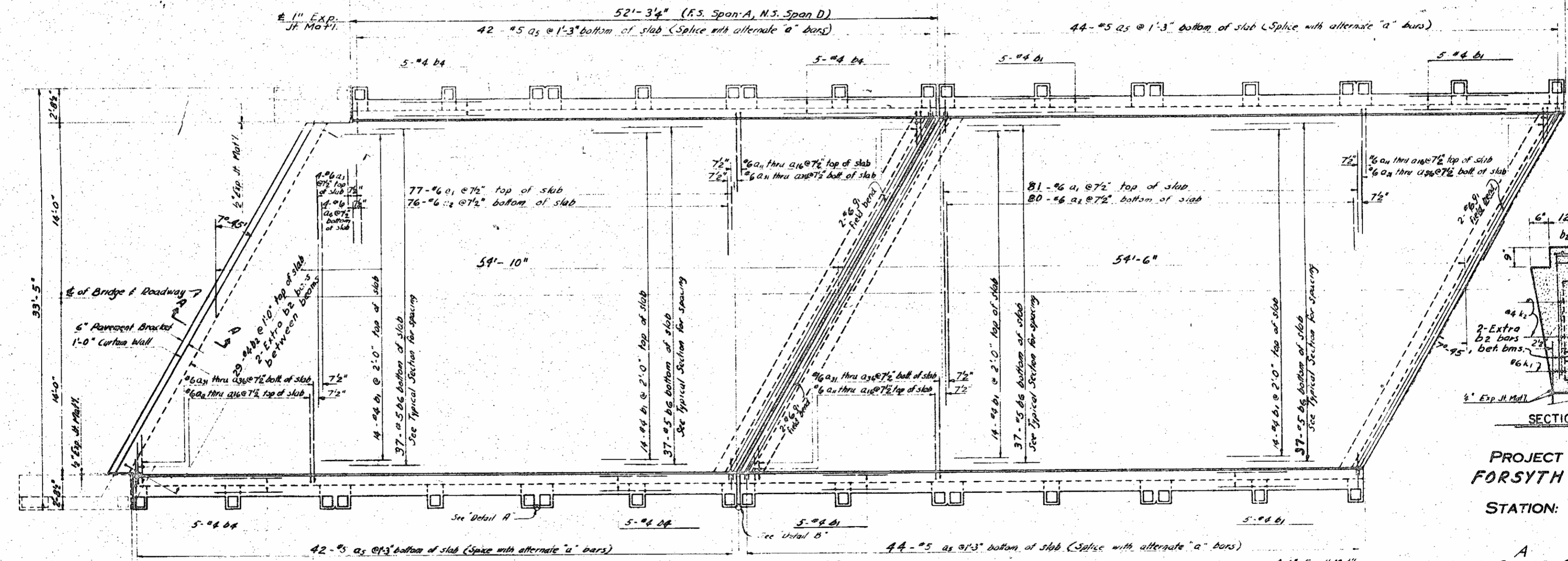
MISSION

CDS
5/11
5/11
5/11

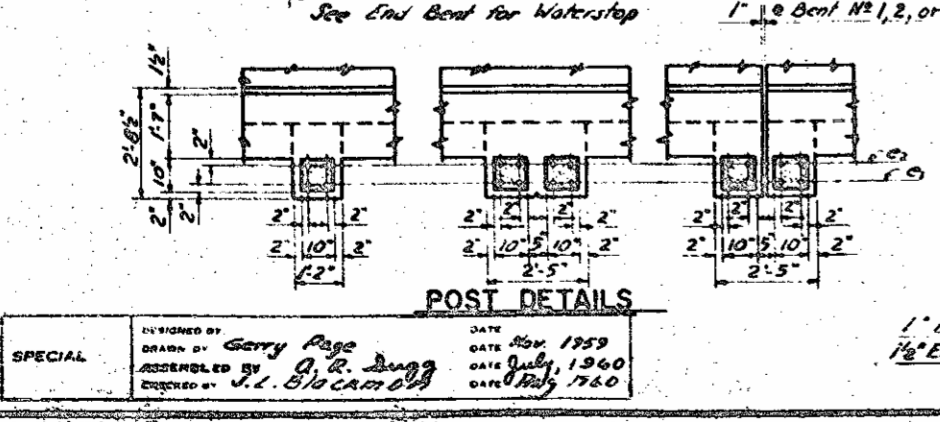
FED. ROAD DIST. NO. 3
STATE N. C.
PROJECT NO. 8.17374
F. A. Proj. F-III (17)
271



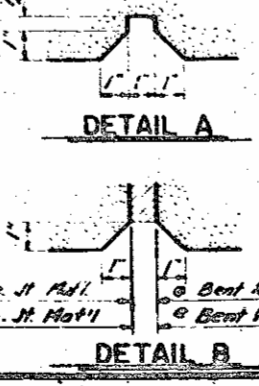
SPAN A OR D ELEVATION SPAN B



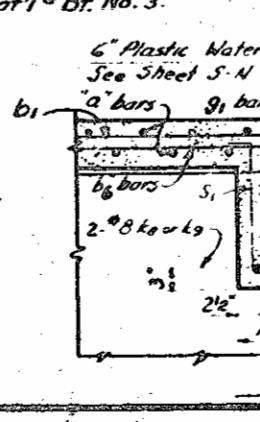
PLAN



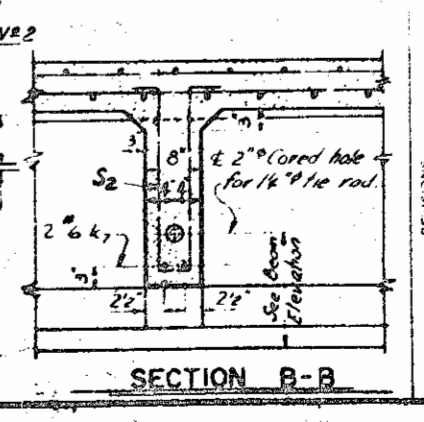
POST DETAILS



END OF BEAM DETAIL



SECTION C-C



SECTION B-B

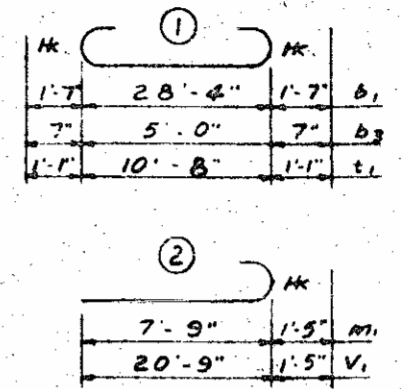
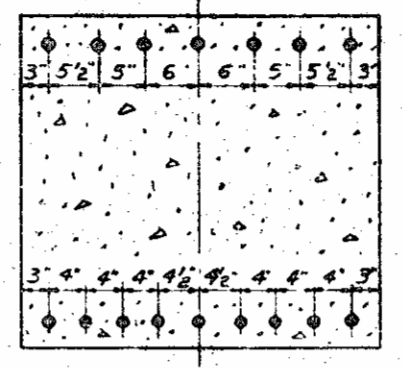
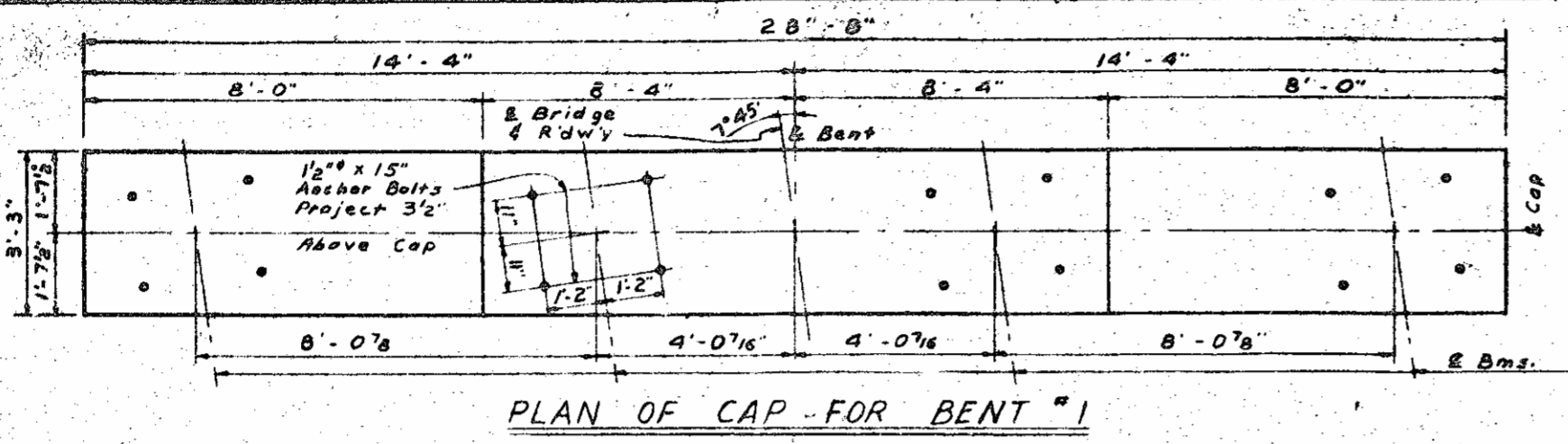
PROJECT NO. 8.17374
FORSYTH COUNTY
STATION: 371+17.69

SPANS: 105'4"-10", 105'4"-6", & 105'4"-10"

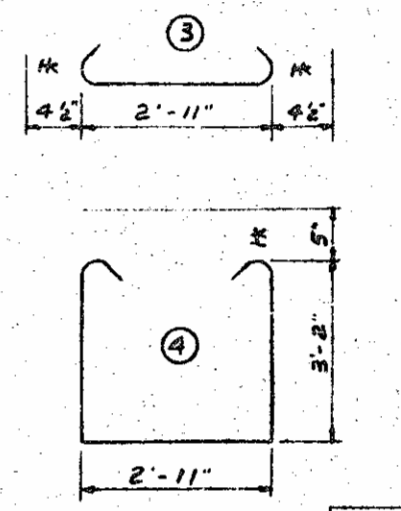
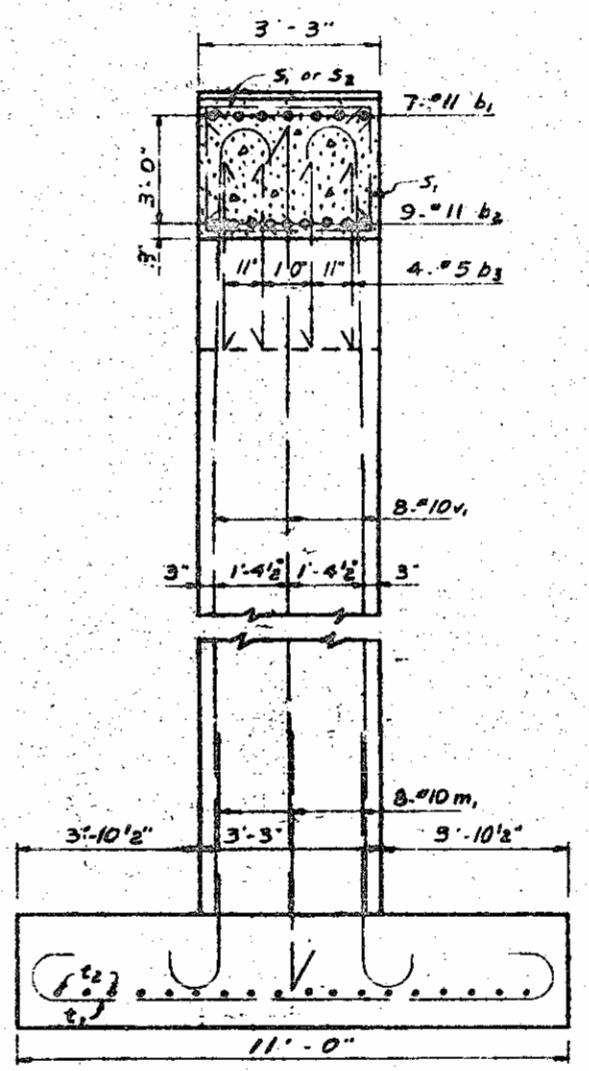
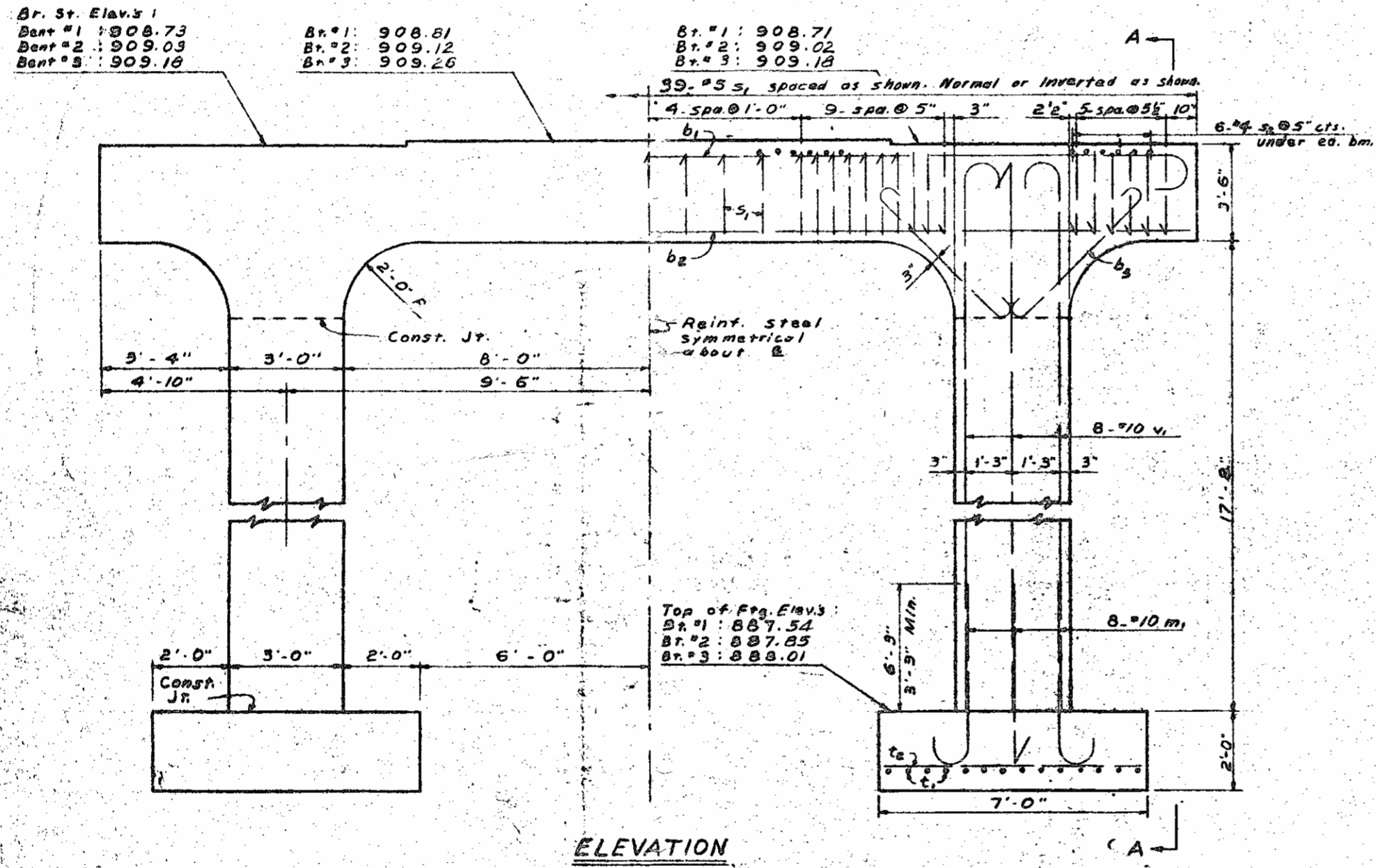
STATE OF NORTH CAROLINA
STATE HIGHWAY COMMISSION
RAILROAD
PRESTRESSED
CONCRETE BEAM SUPERSTRUCTURE
WITH R.C. FLOOR & RAIL
28' ROADWAY 7'-4 1/2" L.H. SKEW
NOVEMBER 1959

SPECIAL
DESIGNED BY Gerry Page
DATE Nov. 1959
ASSEMBLED BY G. R. Long
DATE July, 1960
CHECKED BY J. Z. Blacamp
DATE July, 1960

52
83

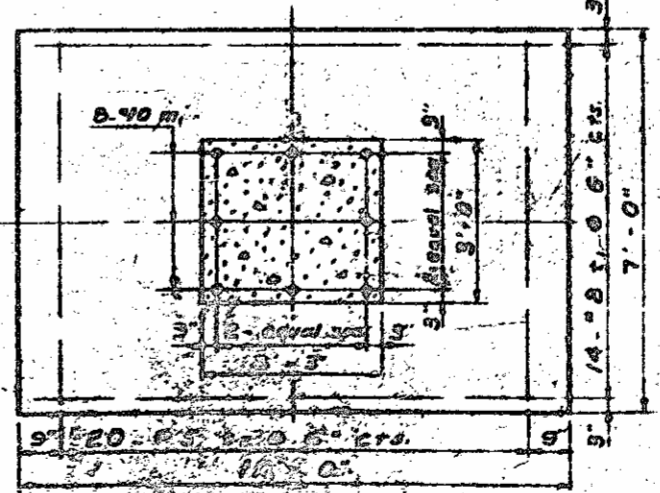
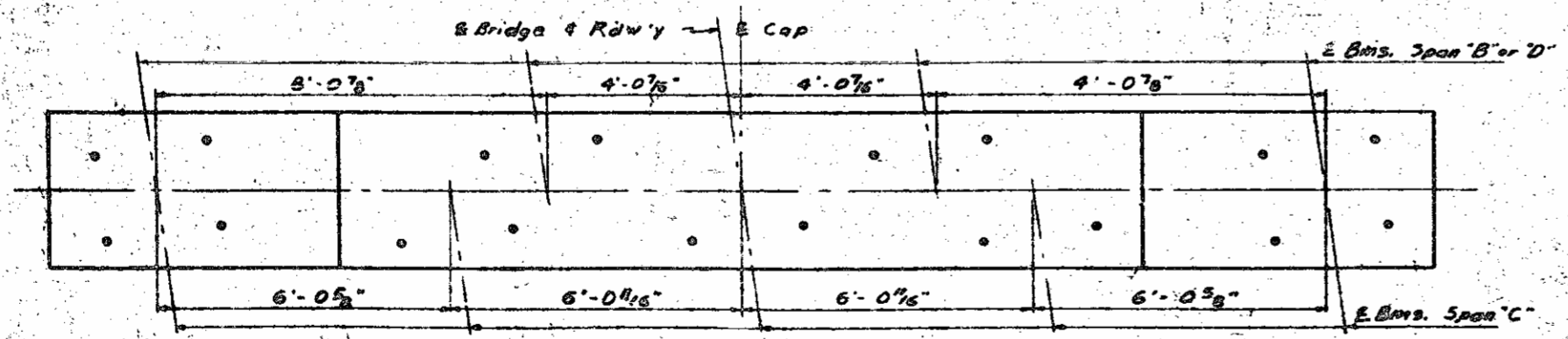


PROJECT NO.	DATE	PROJECT NO.
8.17974		
NO. 53		277



BAR TYPES
All dimensions are out to out.

BILL OF MATERIAL FOR 1 BENT, 3 REQ'D				
BAR NO.	SIZE	TYPE	LENGTH	WEIGHT
b1	7	#11	91'-0"	1171
b2	9	#11	28'-4"	1359
b3	16	#5	108'-2"	105
m	16	#10	2	651
v	16	#10	2	1526
Br. #1	Reinf. Steel	Lbs. -	6492	
Br. #2 or 3	Reinf. Steel	Lbs. -	6500	
Class "A" Concrete, Cu. Yds. - 86.1				
Br. #1	UNCL. STR. EXCAV. CURBS	CUYDS.	536	
Br. #2	UNCL. STR. EXCAV. CURBS	CUYDS.	382	
Br. #3	UNCL. STR. EXCAV. CURBS	CUYDS.	360	



PLAN OF CAP FOR BENT #3 (Bent #2 similar by rotation)
For dimensions, not shown see Plan of Cap for Bent #1

B.17374
FOOSYTH
371+17.69 PM
INTERIOR BENTS
AUGUST, 1960

277
L
AL
WT
WEIGHT
1551
93
73
24
28
21
22
4
2
8
140
57
108
49
132
227
96
101
53
56
2785
16.4
2155
8
215
15278
2222
6
85
746
74
9
109
ION
2