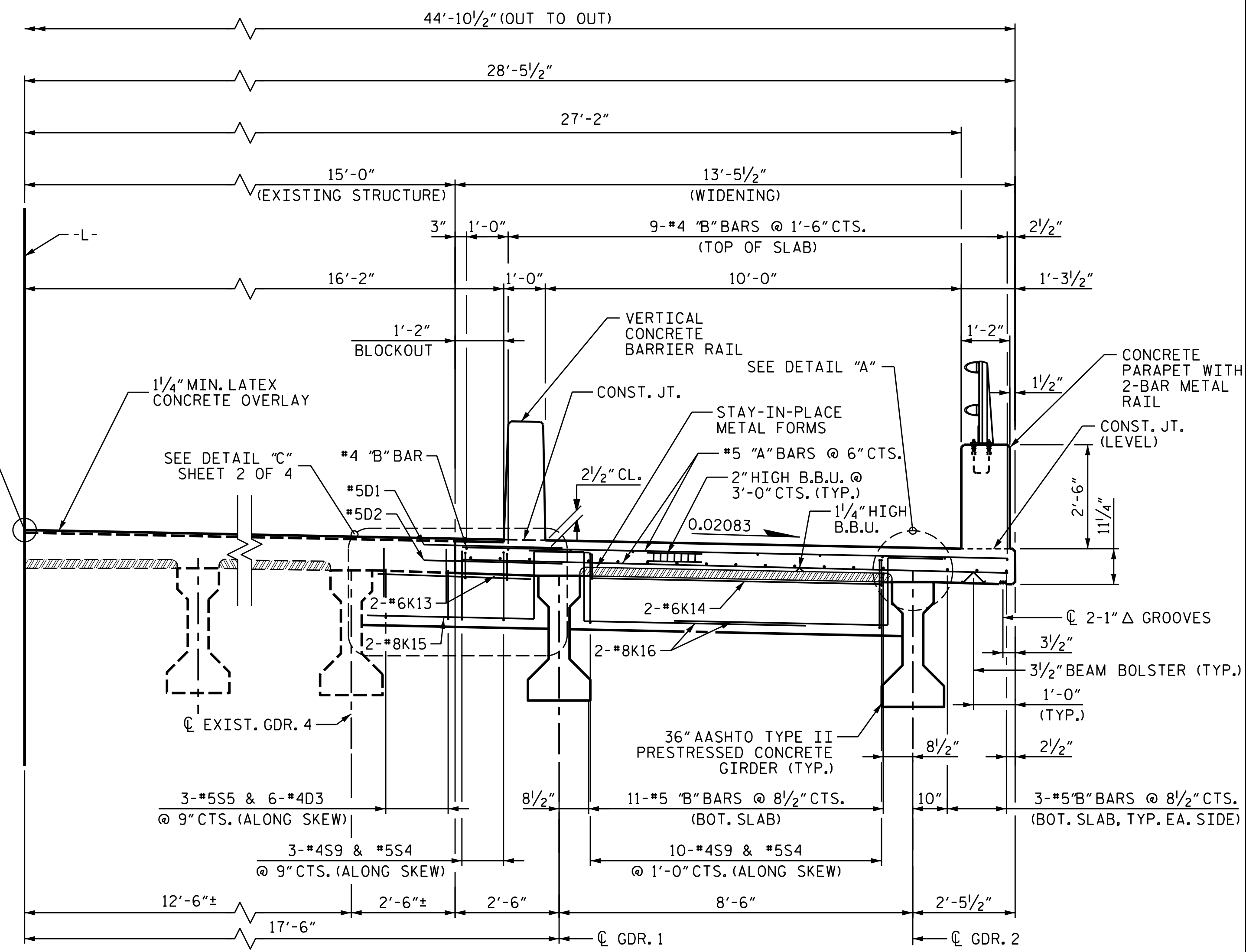


TYPICAL SECTION - END BENT



TYPICAL SECTION - BENT DIAPHRAGM

NOTES

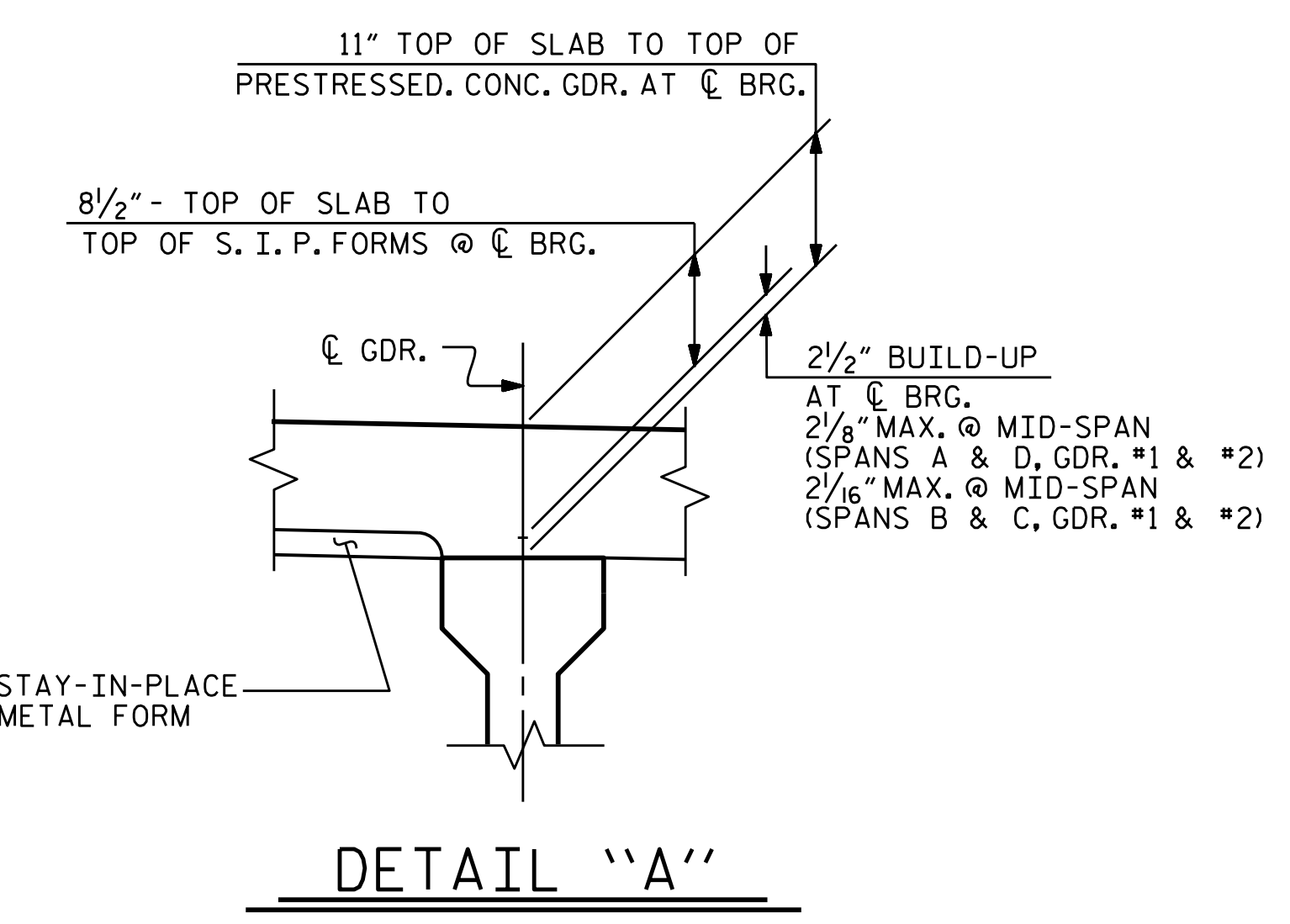
- PROVIDE 1/4" HIGH BEAM BOLSTERS UPPER AT 4'-0" CTS. ATOP THE METAL STAY-IN-PLACE FORMS TO SUPPORT THE BOTTOM MAT OF "A" BARS. WHEN USING REMOVABLE FORMS, PROVIDE CONTINUOUS HIGH CHAIRS FOR METAL DECK (C.H.C.M.) @ 4'-0" CTS. WITH A HEIGHT TO SUPPORT THE BOTTOM MAT OF "A" BARS A CLEAR DISTANCE OF 2 1/2" ABOVE THE TOP OF THE REMOVABLE FORM.
- LONGITUDINAL STEEL MAY BE SHIFTED SLIGHTLY, AS NECESSARY, TO AVOID INTERFERENCE WITH STIRRUPS IN PRESTRESSED CONCRETE GIRDERS.
- PARAPET AND BARRIER RAIL SHALL NOT BE CAST UNTIL ALL SLAB CONCRETE IN THE SPAN HAS BEEN CAST AND HAS REACHED A MINIMUM COMPRESSIVE STRENGTH OF 3,000 PSI.
- FOR CONCRETE PARAPET REINFORCING DETAILS, SEE "CONCRETE PARAPET" SHEET.
- FOR VERTICAL CONCRETE BARRIER RAIL REINFORCING DETAILS, SEE "VERTICAL CONCRETE BARRIER RAIL" SHEET.
- FOR BLOCKOUT DETAILS, SEE CONSTRUCTION SEQUENCE SHEET 1 OF 2.

PROJECT NO. U-4424
EDGEcombe COUNTY
 STATION: 66+24.84 -L-
 SHEET 1 OF 4

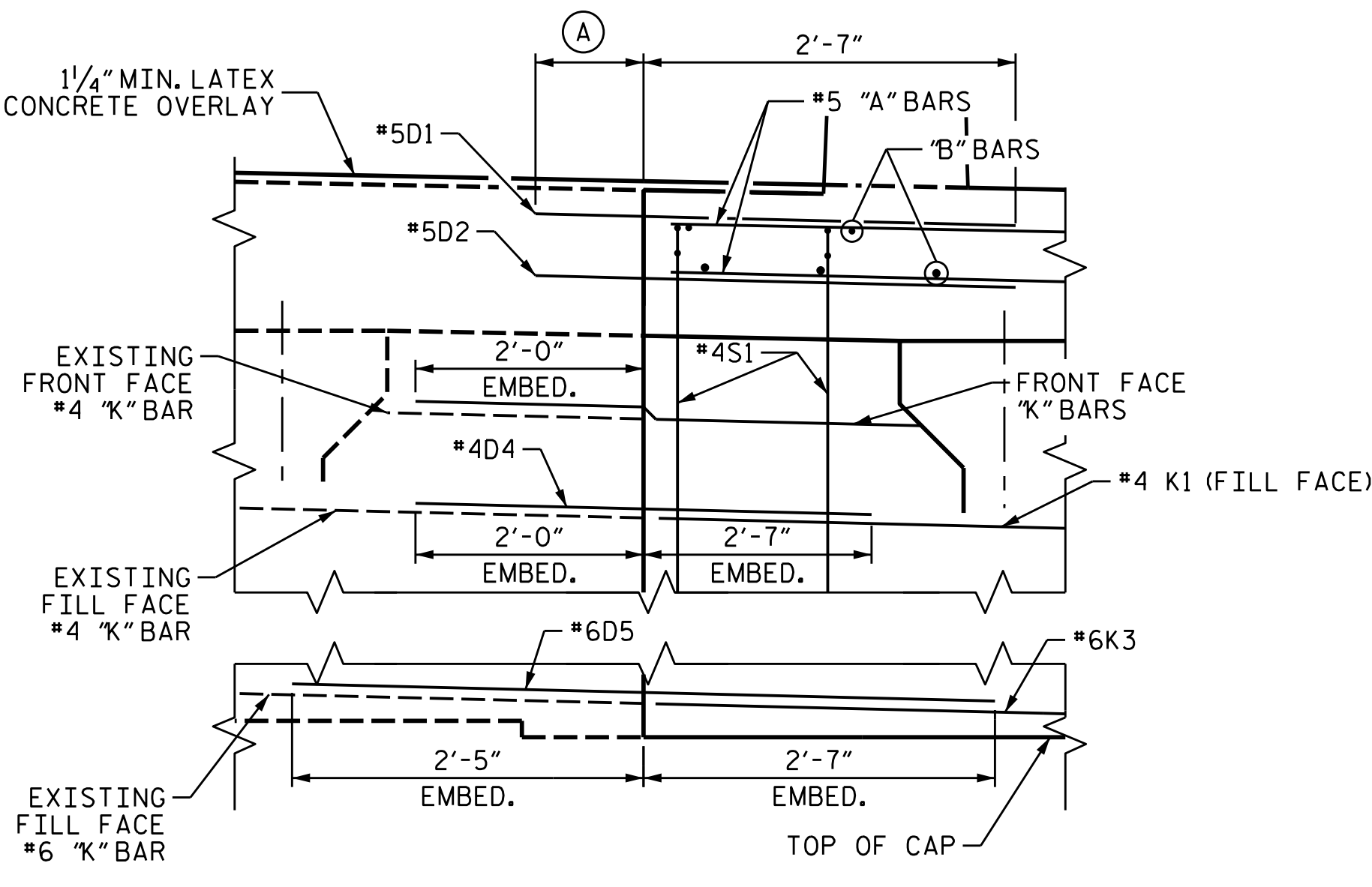
STATE OF NORTH CAROLINA
 DEPARTMENT OF TRANSPORTATION
 RALEIGH

TYPICAL SECTION
 SPANS A & D

REVISIONS						SHEET NO.
NO.	BY:	DATE:	NO.	BY:	DATE:	S-6
1			3			TOTAL SHEETS 37
2			4			



DETAIL "A"



DETAIL "B"

END BENT 1 SHOWN; END BENT 2 SIMILAR

(A) DRILLED HOLE DIAMETER AND EMBEDMENT SHALL BE PER ADHESIVE BONDING MANUFACTURER'S RECOMMENDATIONS. BAR LENGTH BASED ON 9" MIN. EMBEDMENT.

3/28/2023
 J:\188771-06 NCDOT NC 111U-4424\Structures\Dr-off-fig\06\401.013_U4424_SML_TSI_006.dgn

DESIGNED BY: J. WHEATLEY DATE: MAR 2023
 DRAWN BY: J. WHEATLEY DATE: MAR 2023
 CHECKED BY: T. KIRSCHBAUM DATE: MAR 2023
 DESIGN ENGINEER OF RECORD: T. HARRIS DATE: MAR 2023

wsp
 WSP USA Inc.
 434 FAYETTEVILLE STREET
 SUITE 1500
 RALEIGH, NC 27601
 TEL: 1.919.836.4040
 LICENSE NO. F-0165

DOCUMENT NOT CONSIDERED FINAL
 UNLESS ALL SIGNATURES COMPLETED

STATE OF NORTH CAROLINA
 PROFESSIONAL SEAL
 19299
 ENGINEER
 THOMAS M. HARRIS
 3/28/2023