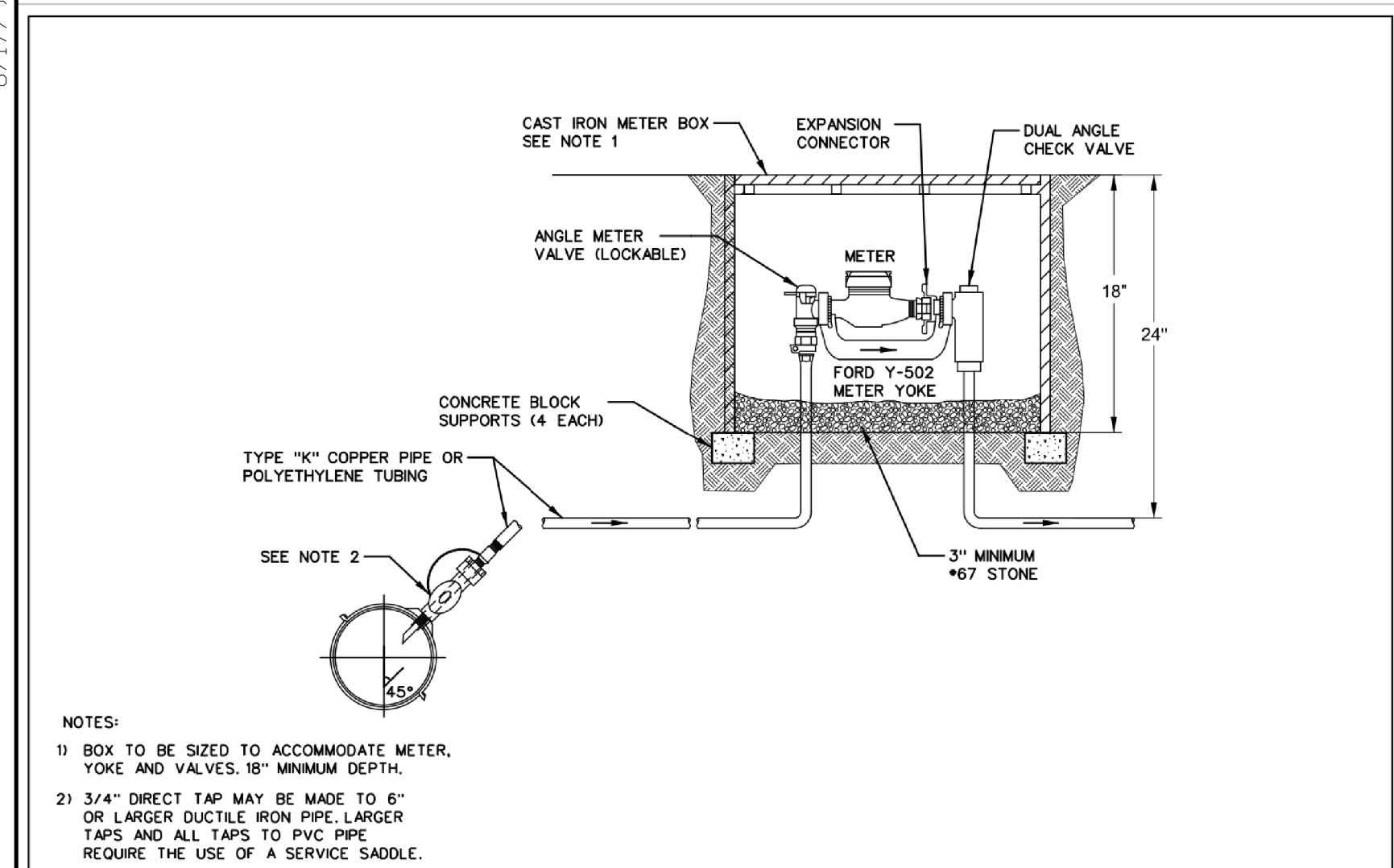


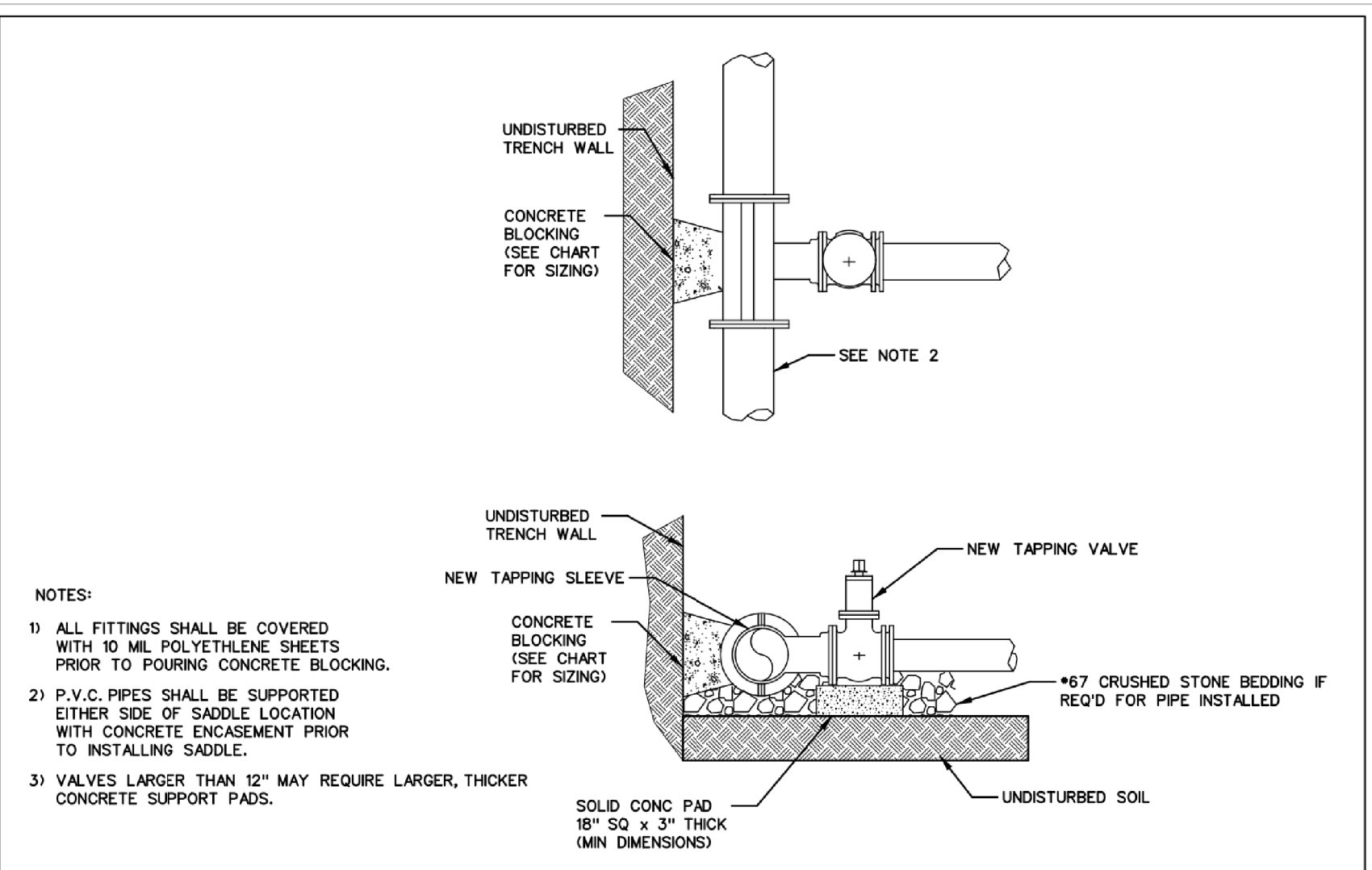
8.17.19



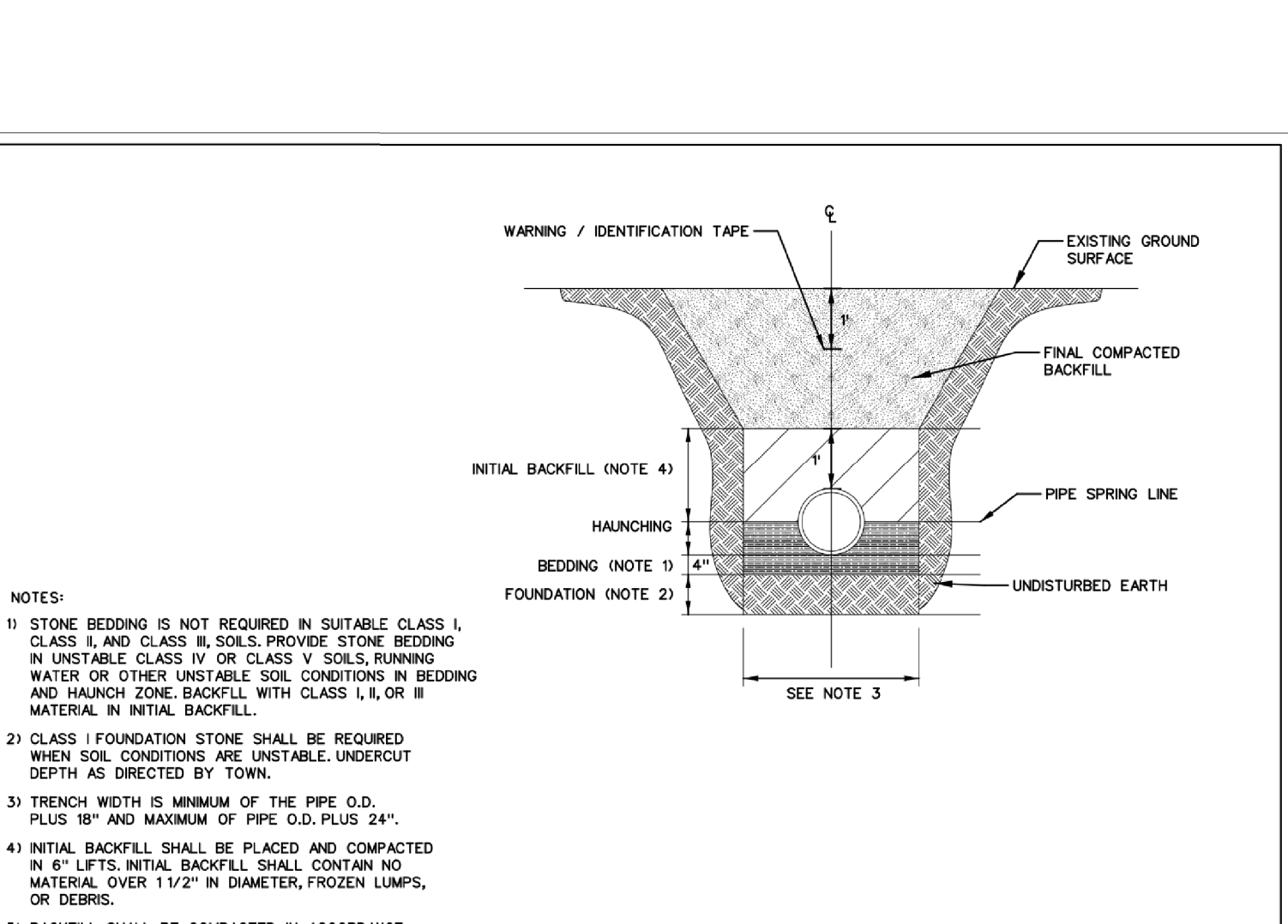
**DOCUMENT NOT CONSIDERED FINAL  
UNLESS ALL SIGNATURES COMPLETED**



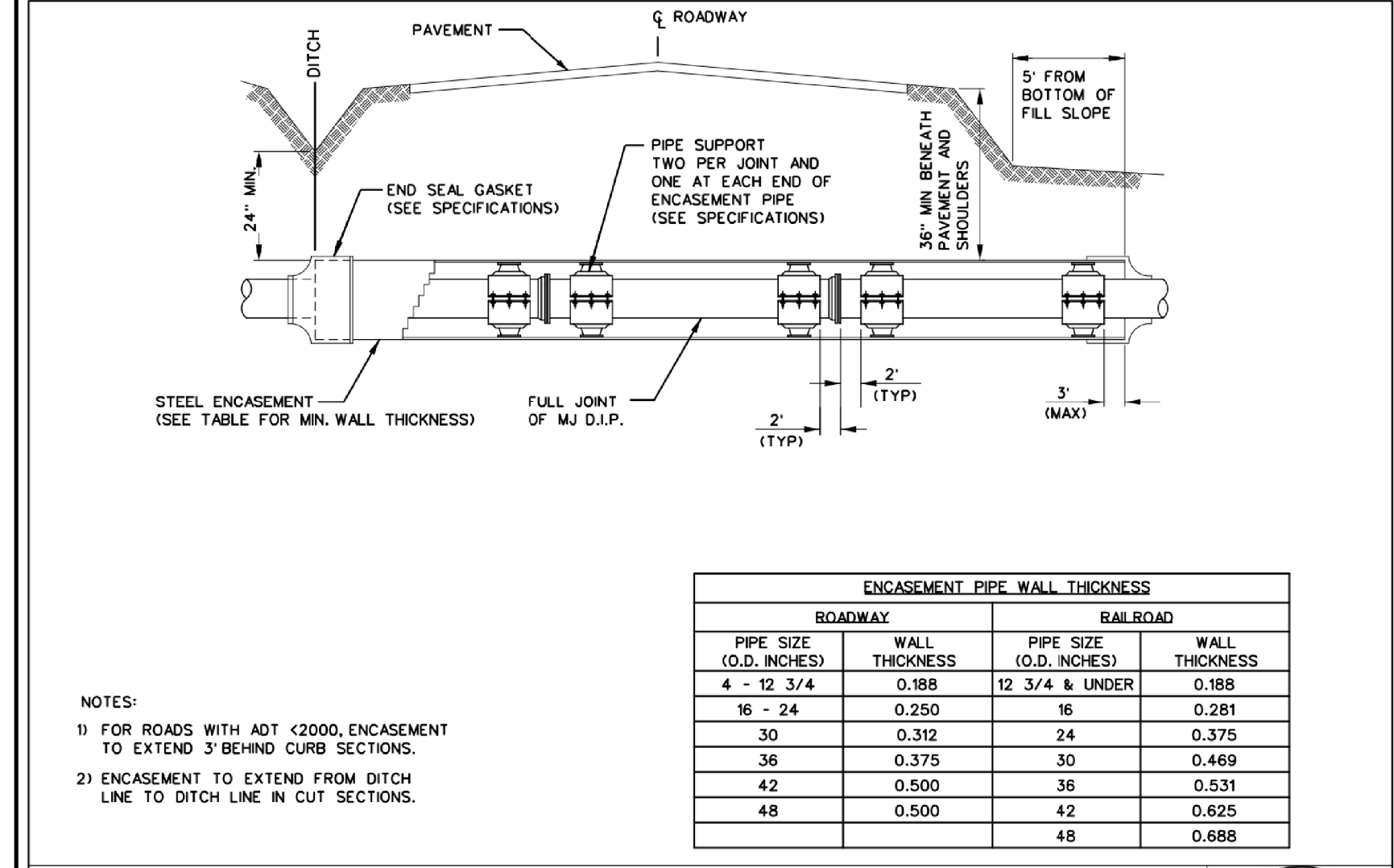
**TYPICAL 3/4" AND 1" WATER SERVICE**  
**TOWN OF TARBORO STANDARD DETAIL**  
 DATE: REVISIONS  
 DATE: 07-01-15  
 SHEET 1 OF 1  
 STD. No. W-2.01



**TAPPING SLEEVE AND VALVE**  
**TOWN OF TARBORO STANDARD DETAIL**  
 DATE: REVISIONS  
 DATE: 07-01-15  
 SHEET - OF -  
 STD. No. W-2.09

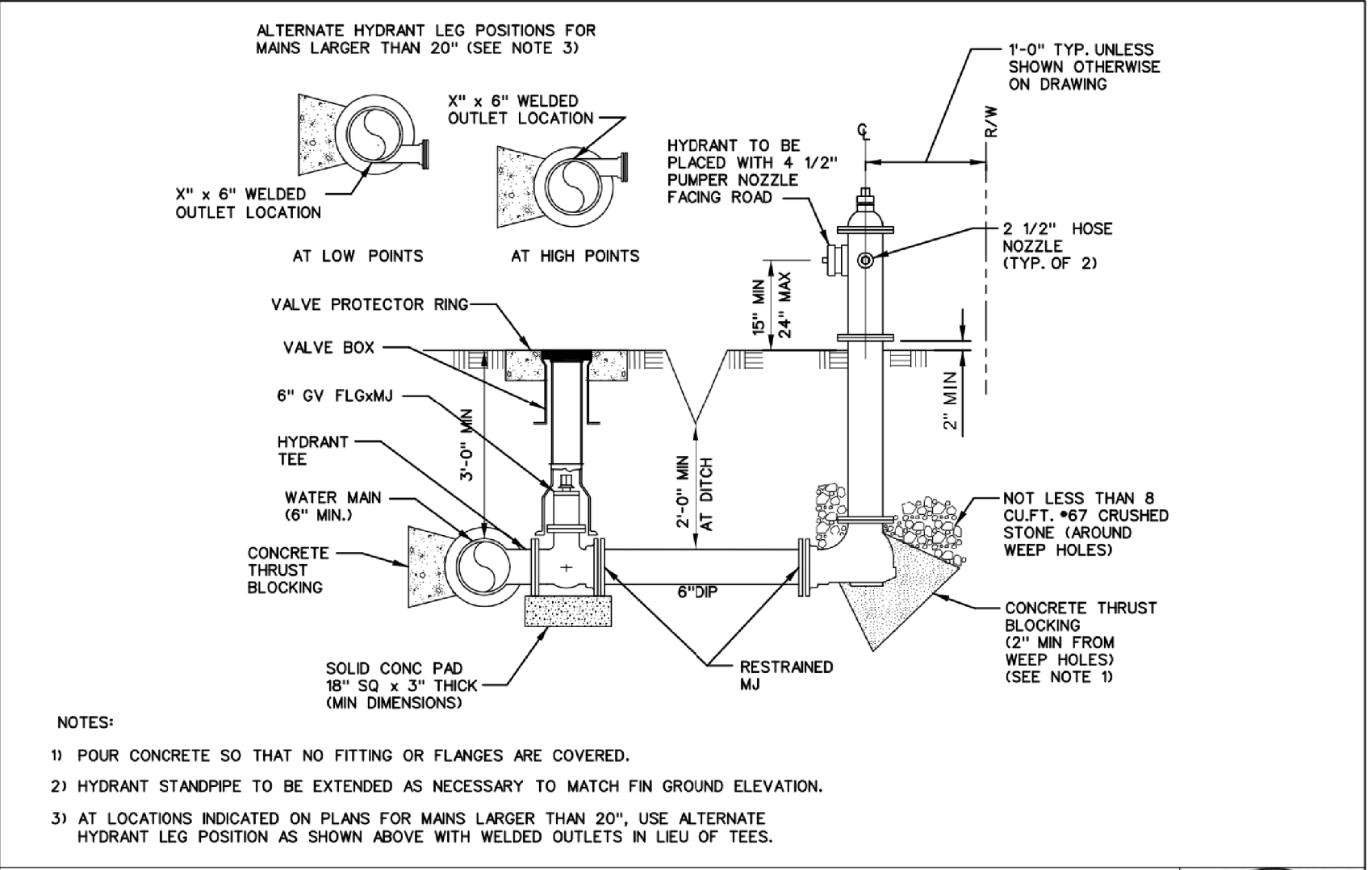


**WATER LINE BEDDING**  
**TOWN OF TARBORO STANDARD DETAIL**  
 DATE: REVISIONS  
 DATE: 07-01-15  
 SHEET 1 OF 1  
 STD. No. W-2.14

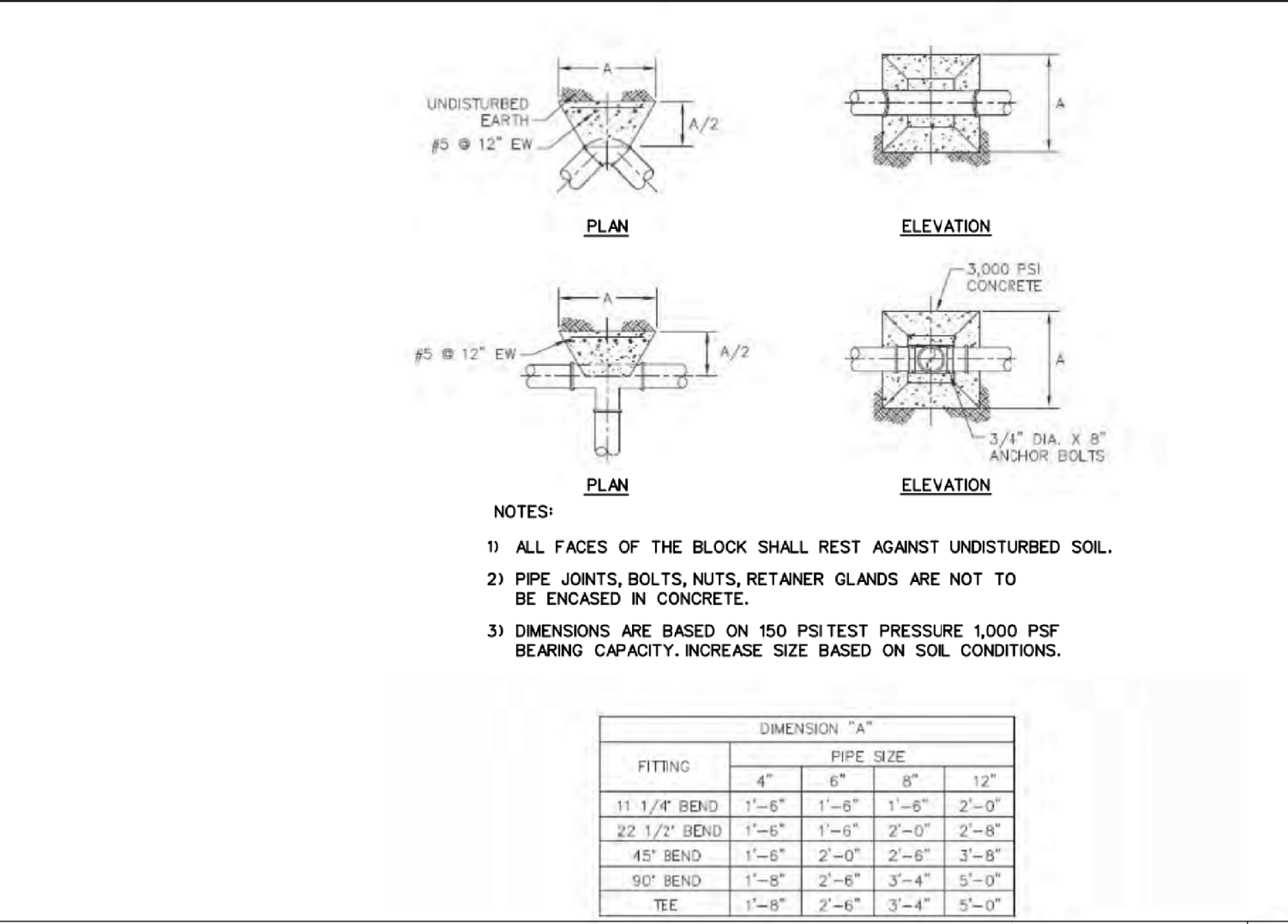


**PIPE INSTALLATION IN STEEL ENCASEMENT**  
**TOWN OF TARBORO STANDARD DETAIL**  
 DATE: REVISIONS  
 DATE: 07-01-15  
 SHEET 1 OF 1  
 STD. No. S-1.20

ENCASEMENT PIPE WALL THICKNESS			
ROADWAY		RAILROAD	
PIPE SIZE (O.D. INCHES)	WALL THICKNESS	PIPE SIZE (O.D. INCHES)	WALL THICKNESS
4 - 12	0.188	12 3/4 & UNDER	0.188
16 - 24	0.250	16	0.281
30	0.312	24	0.375
36	0.375	30	0.469
42	0.500	36	0.531
48	0.500	42	0.625
		48	0.688

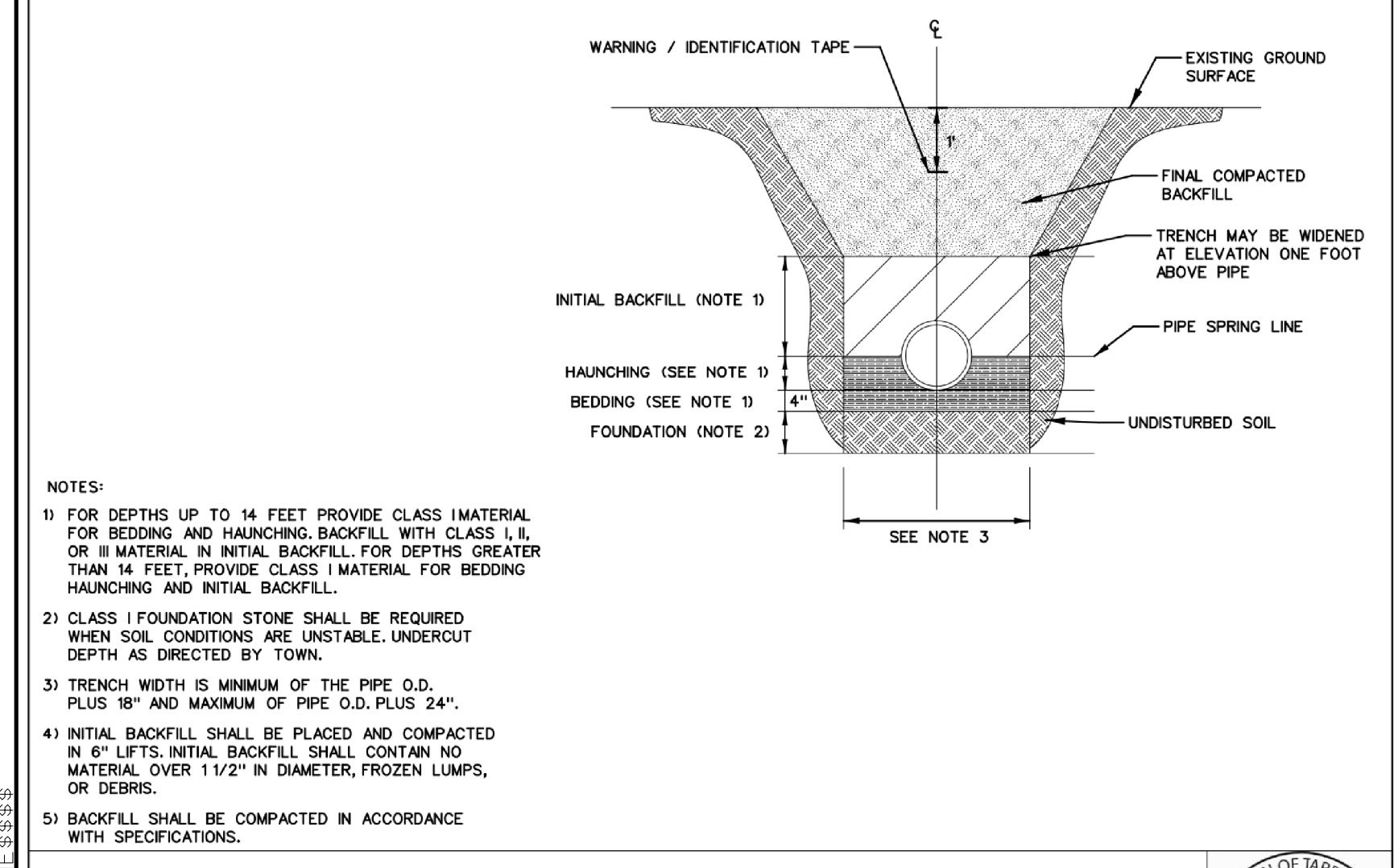


**FIRE HYDRANT ASSEMBLY**  
**TOWN OF TARBORO STANDARD DETAIL**  
 DATE: REVISIONS  
 DATE: 07-01-15  
 SHEET - OF -  
 STD. No. W-2.08

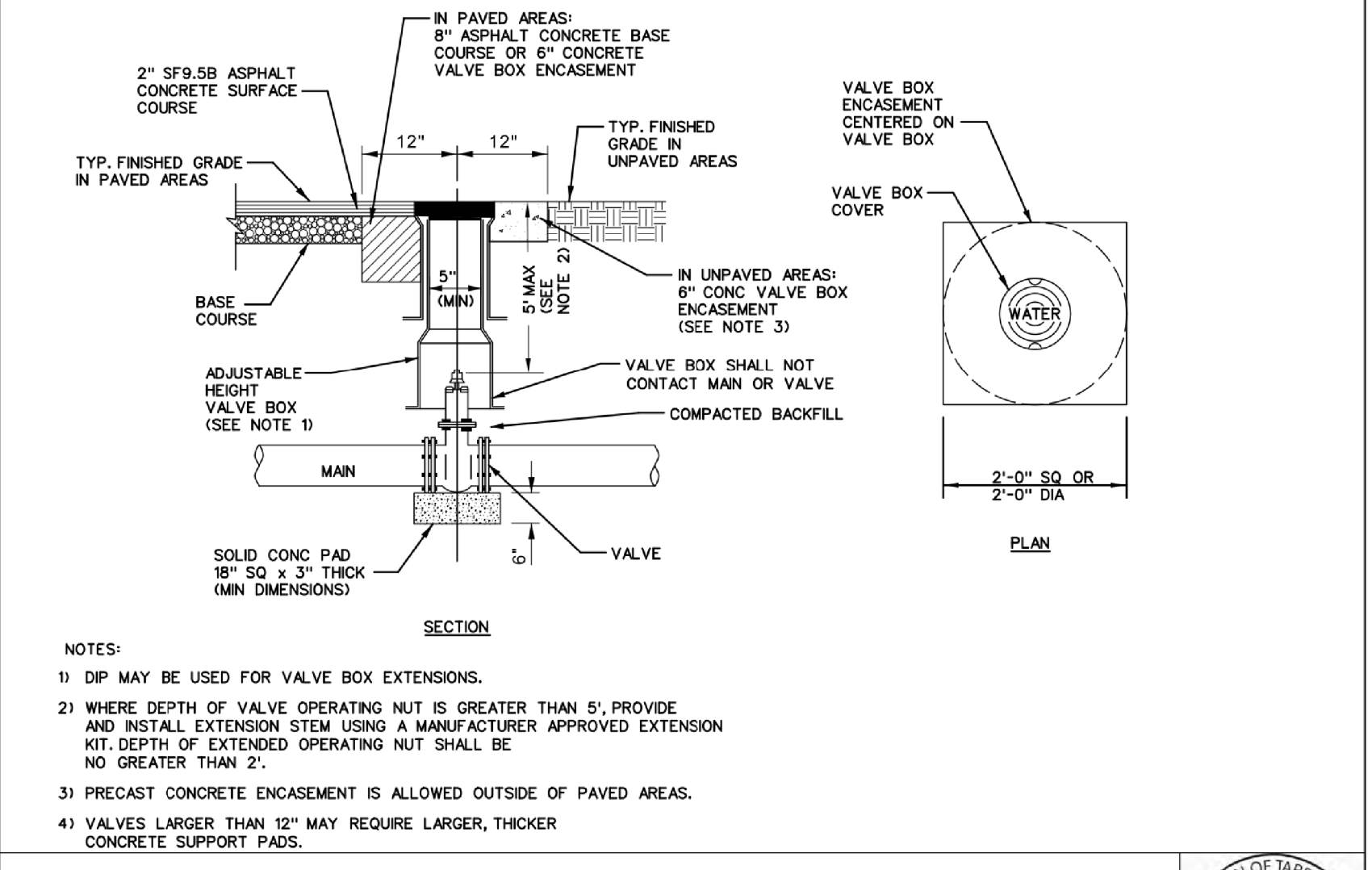


**THRUST BLOCK FOR HORIZONTAL PIPE BENDS**  
**TOWN OF TARBORO STANDARD DETAIL**  
 DATE: REVISIONS  
 DATE: 07-01-15  
 SHEET - OF -  
 STD. No. W-2.13

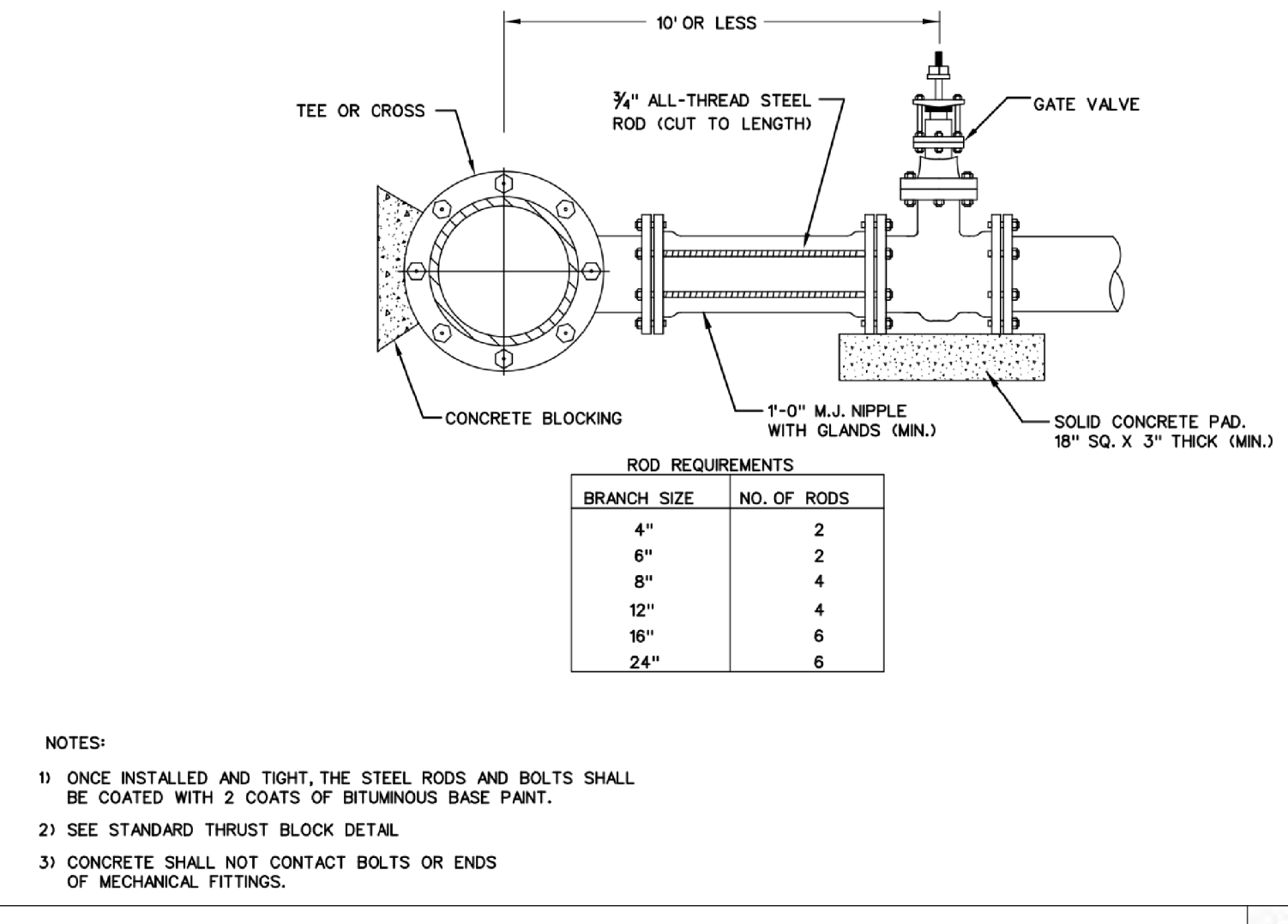
FITTING	DIMENSION "A"		
	4"	6"	8" 12"
11 1/4" BEND	1'-4"	1'-6"	2'-0"
22 1/2" BEND	1'-6"	1'-8"	2'-0"
45" BEND	1'-8"	2'-0"	2'-6"
90" BEND	1'-8"	2'-6"	3'-4"
TEE	1'-8"	2'-6"	3'-4"



**PVC (FLEXIBLE) GRAVITY SEWER PIPE BEDDING**  
**TOWN OF TARBORO STANDARD DETAIL**  
 DATE: REVISIONS  
 DATE: 07-01-15  
 SHEET 1 OF 1  
 STD. No. S-1.18



**VALVE BOX INSTALLATION**  
**TOWN OF TARBORO STANDARD DETAIL**  
 DATE: REVISIONS  
 DATE: 07-01-15  
 SHEET - OF -  
 STD. No. W-2.07



**STANDARD VALVE RODDING**  
**TOWN OF TARBORO STANDARD DETAIL**  
 DATE: REVISIONS  
 DATE: 07-01-15  
 SHEET - OF -  
 STD. No. W-2.12

BRANCH SIZE	NO. OF RODS
4"	2
6"	2
8"	4
12"	4
16"	6
24"	6