

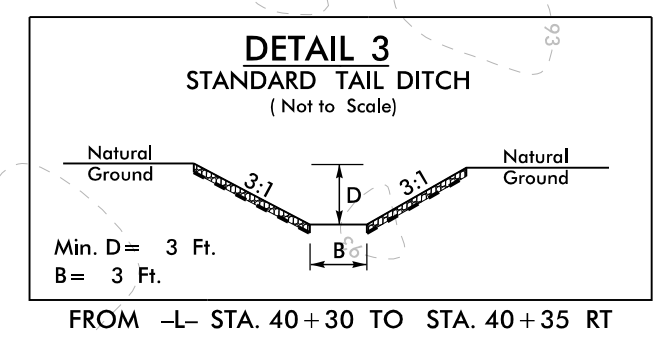
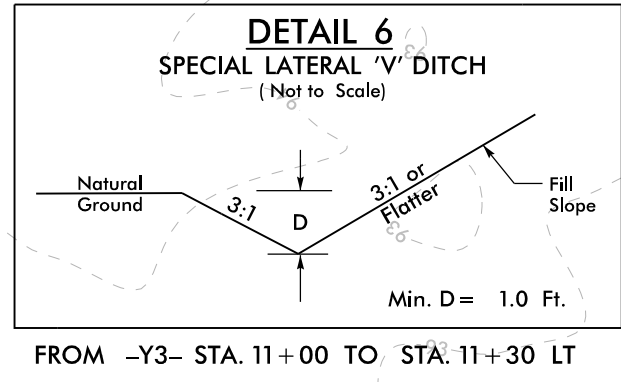
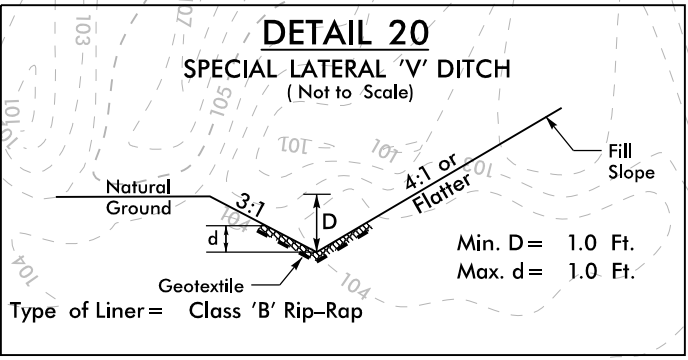
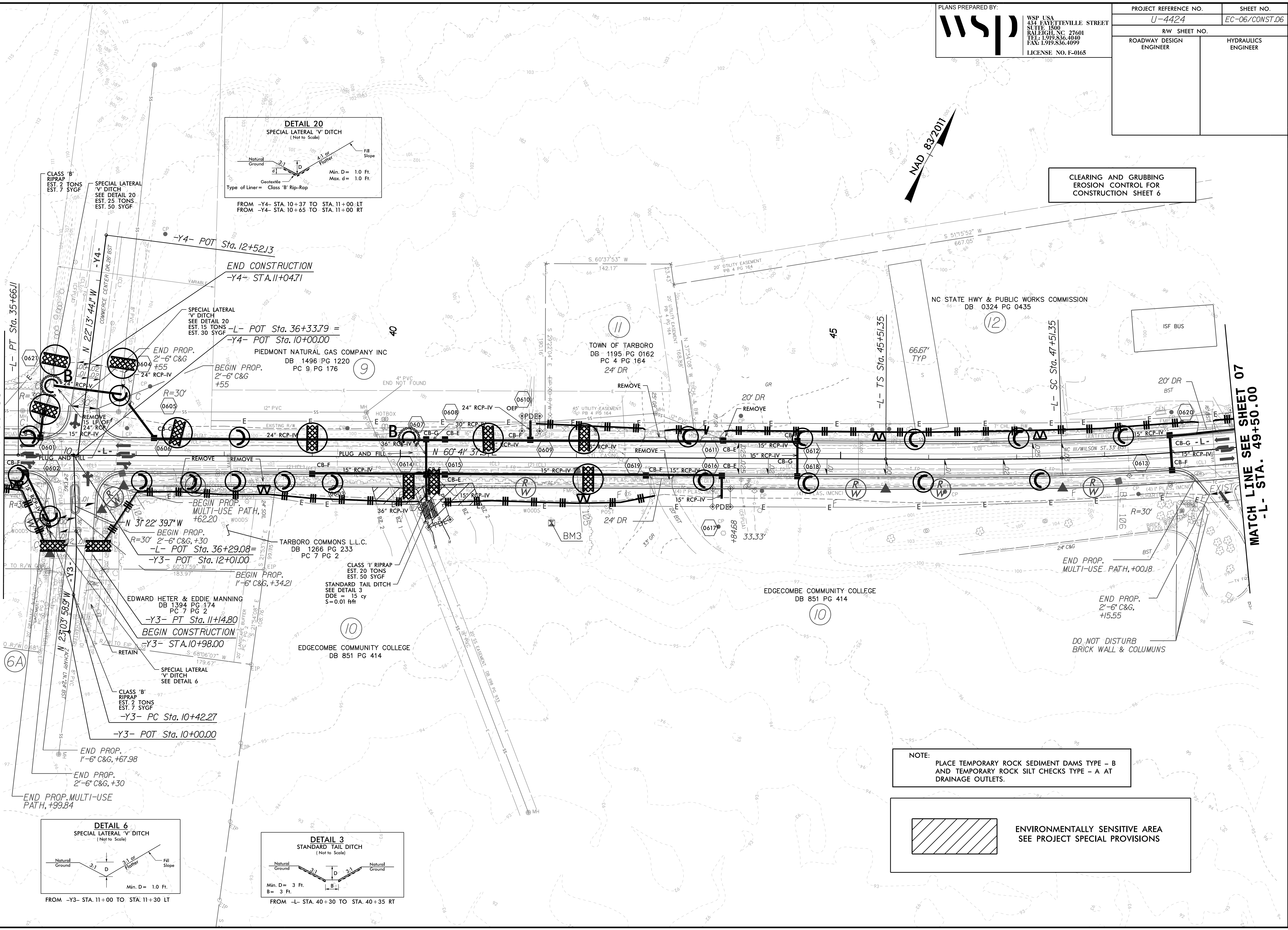
8.17.99
06-APR-2023 10:13
SERVESTORY CONTROL\CADD\U4424_EC_psh6_CG.dgn
WSP

PLANS PREPARED BY:
WSP
WSP USA
434 FAYETTEVILLE STREET
SUITE 1500
RALEIGH, NC 27601
TEL: 1.919.836.4040
FAX: 1.919.836.4099
LICENSE NO. F-0165

PROJECT REFERENCE NO.	SHEET NO.
U-4424	EC-06/CONST.06
RW SHEET NO.	
ROADWAY DESIGN ENGINEER	HYDRAULICS ENGINEER

MATCH LINE SEE SHEET 05
-L- STA. 35+50.00

MATCH LINE SEE SHEET 07
-L- STA. 49+50.00



CLEARING AND GRUBBING
EROSION CONTROL FOR
CONSTRUCTION SHEET 6

NOTE:
PLACE TEMPORARY ROCK SEDIMENT DAMS TYPE - B
AND TEMPORARY ROCK SILT CHECKS TYPE - A AT
DRAINAGE OUTLETS.

 ENVIRONMENTALLY SENSITIVE AREA
SEE PROJECT SPECIAL PROVISIONS

CLASS 'B' RIPRAP
EST. 2 TONS
EST. 7 SYGF

SPECIAL LATERAL 'V' DITCH
SEE DETAIL 20
EST. 25 TONS
EST. 50 SYGF

END CONSTRUCTION
-Y4- STA. 11+04.71

SPECIAL LATERAL 'V' DITCH
SEE DETAIL 20
EST. 15 TONS
EST. 30 SYGF

END PROP.
2'-6" C&G
#55
-L- POT Sta. 36+33.79 =
-Y4- POT Sta. 10+00.00

BEGIN PROP.
2'-6" C&G
#55

BEGIN PROP.
MULTI-USE PATH,
+62.20

BEGIN PROP.
2'-6" C&G, +30
-L- POT Sta. 36+29.08 =
-Y3- POT Sta. 12+01.00

BEGIN PROP.
1'-6" C&G, +34.21

BEGIN CONSTRUCTION
-Y3- STA. 11+4.80

BEGIN CONSTRUCTION
-Y3- STA. 10+98.00

SPECIAL LATERAL 'V' DITCH
SEE DETAIL 6

CLASS 'B' RIPRAP
EST. 2 TONS
EST. 7 SYGF

-Y3- PC Sta. 10+42.27

-Y3- POT Sta. 10+00.00

END PROP.
1'-6" C&G, +67.98

END PROP.
2'-6" C&G, +30

END PROP. MULTI-USE
PATH, +99.84

PIEDMONT NATURAL GAS COMPANY INC
DB 1496 PG 1220
PC 9, PG 176

TARBORO COMMONS L.L.C.
DB 1266 PG 233
PC 7 PG 2

EDGECOMBE COMMUNITY COLLEGE
DB 851 PG 414

TOWN OF TARBORO
DB 1195 PG 0162
PC 4 PG 164

EDGECOMBE COMMUNITY COLLEGE
DB 851 PG 414

NC STATE HWY & PUBLIC WORKS COMMISSION
DB 0324 PG 0435

END PROP.
MULTI-USE PATH, +00.18

END PROP.
2'-6" C&G,
+15.55

DO NOT DISTURB
BRICK WALL & COLUMNS

