

8/17/99

REVISIONS

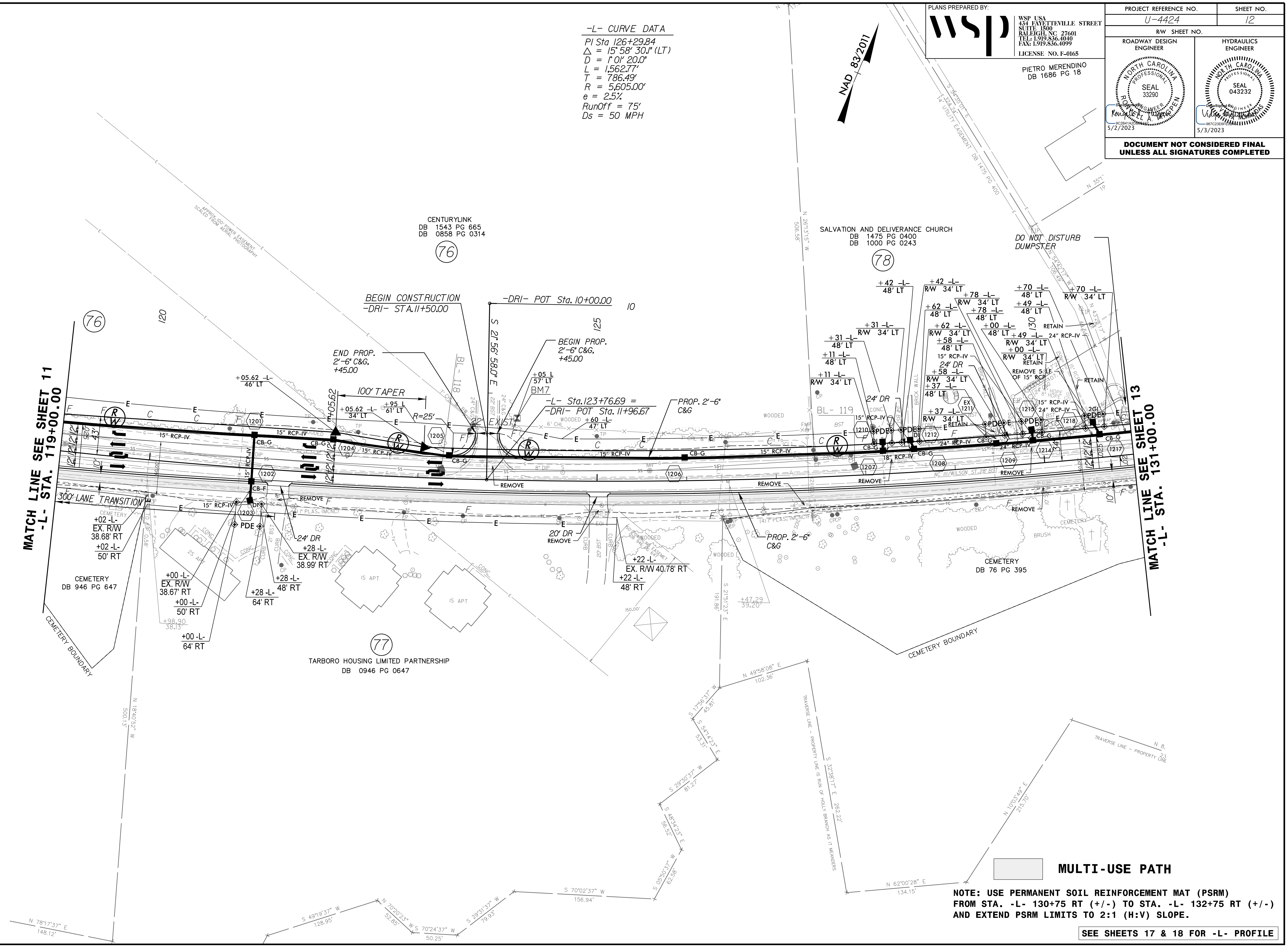
U:\APR-2023\151717\WSP\pedway\ProJ\U-4424-Fdy-psn_12.dgn

-L- CURVE DATA
 PI Sta 126+29.84
 $\Delta = 15^{\circ}58'30.0''$ (LT)
 $D = 1^{\circ}01'20.0''$
 $L = 1,562.77'$
 $T = 786.49'$
 $R = 5,605.00'$
 $e = 2.5\%$
 RunOff = 75'
 $D_s = 50$ MPH

PLANS PREPARED BY:
WSP
 WSP USA
 434 FAYETTEVILLE STREET
 SUITE 1500
 RALEIGH, NC 27601
 TEL: 1.919.836.4040
 FAX: 1.919.836.4099
 LICENSE NO. F-0165

PROJECT REFERENCE NO. U-4424	SHEET NO. 12
RW SHEET NO.	
ROADWAY DESIGN ENGINEER	HYDRAULICS ENGINEER
PIETRO MERENDINO DB 1686 PG 18 5/2/2023	

**DOCUMENT NOT CONSIDERED FINAL
 UNLESS ALL SIGNATURES COMPLETED**



**MATCH LINE SEE SHEET 11
 -L- STA. 119+00.00**

**MATCH LINE SEE SHEET 13
 -L- STA. 131+00.00**

MULTI-USE PATH

**NOTE: USE PERMANENT SOIL REINFORCEMENT MAT (PSRM)
 FROM STA. -L- 130+75 RT (+/-) TO STA. -L- 132+75 RT (+/-)
 AND EXTEND PSRM LIMITS TO 2:1 (H:V) SLOPE.**

SEE SHEETS 17 & 18 FOR -L- PROFILE