

8/17/99

-Y7- CURVE DATA

PI Sta 10+64.20
Δ = 2° 31' 09" (LT)
D = 23' 52" 23.7"
L = 102.71'
T = 52.15'
R = 240.00'
e = Match Exlst.

-Y8- CURVE DATA


PI Sta 13+13.53
Δ = 38° 37' 58.0" (RT)
D = 57' 17" 44.8"
L = 67.43'
T = 35.05'
R = 100.00'
e = 2%

-L- CURVE DATA

PI Sta 105+64.93
Δ = 22° 24' 19.9" (RT)
D = 1° 55' 33.3"
L = 1,163.37'
T = 589.21'
R = 2,975.00'
e = 3%
Ds = 50 MPH

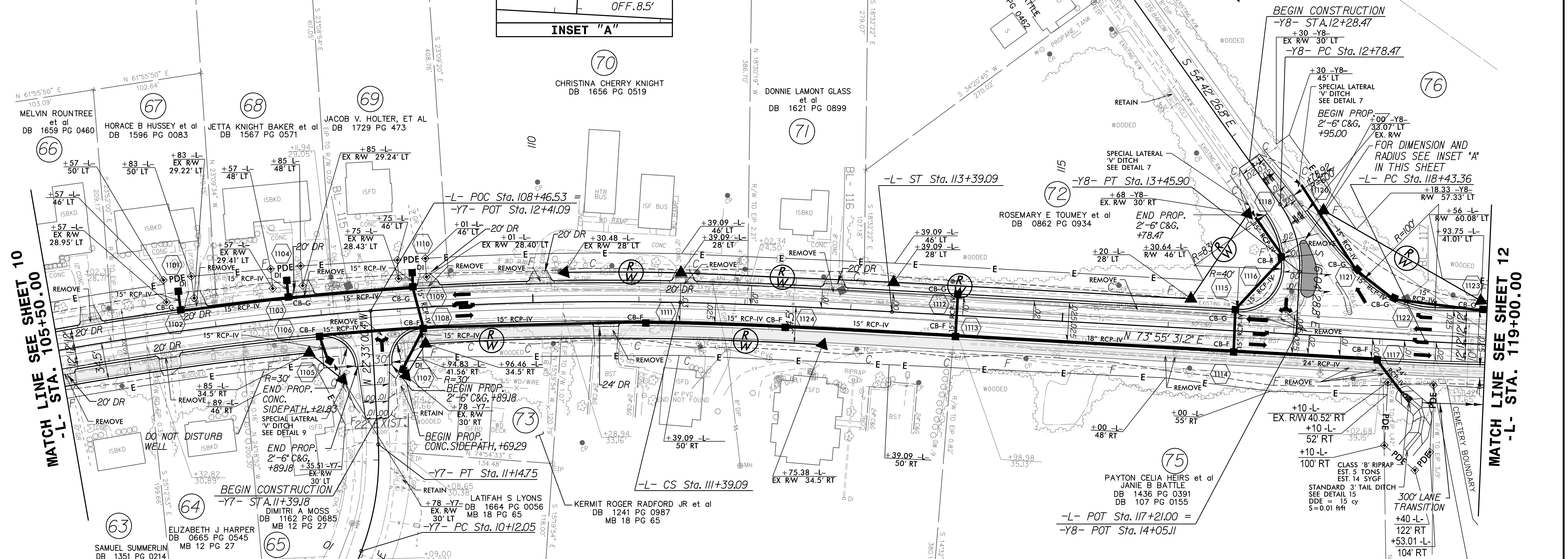
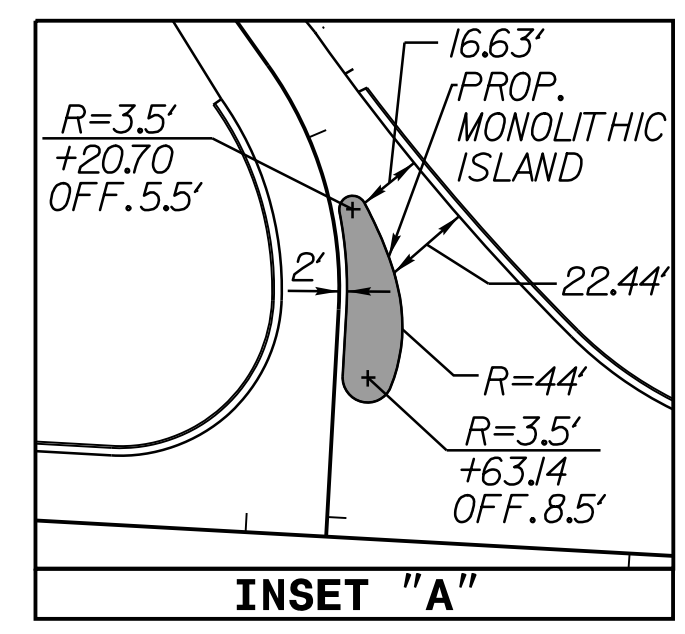
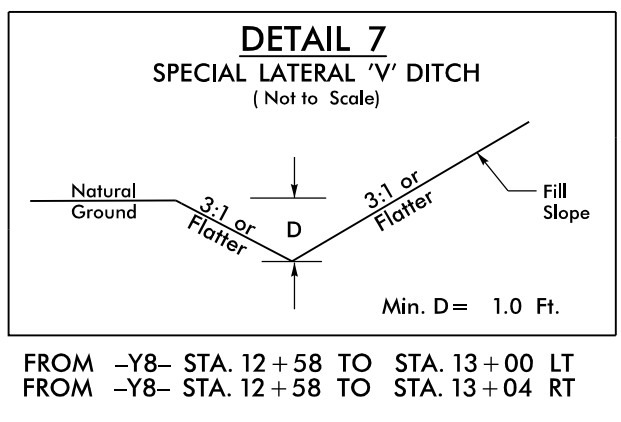
PIs Sta 112+05.76
Δ = 15° 58' 30.1" (LT)
D = 1° 01' 20.0"
L = 1,562.77'
T = 786.49'
R = 5,605.00'
e = 2.5%
RunOff = 75'
Ds = 50 MPH

PLANS PREPARED BY:



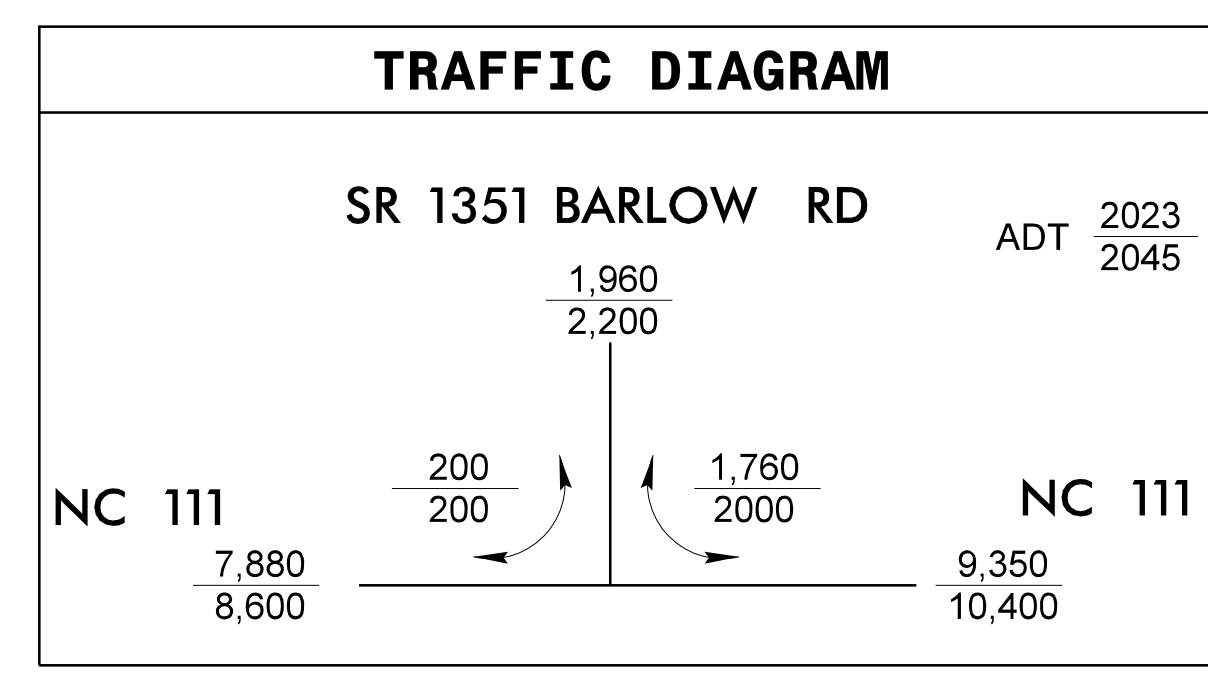
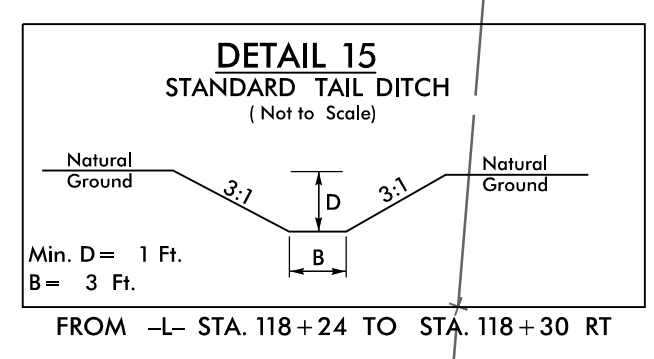
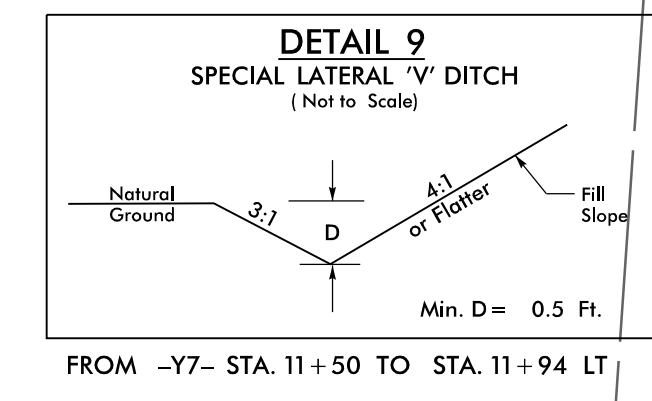
WSP USA
434 FAYETTEVILLE STREET
SUITE 1500
RALEIGH, NC 27601
TEL: 1.919.836.4040
FAX: 1.919.836.4099
LICENSE NO. F-0165

PROJECT REFERENCE NO. U-4424	SHEET NO. 11
ROADWAY DESIGN ENGINEER NORTH CAROLINA PROFESSIONAL SEAL 33290 5/2/2023	HYDRAULICS ENGINEER NORTH CAROLINA PROFESSIONAL SEAL 043232 5/3/2023
DOCUMENT NOT CONSIDERED FINAL UNLESS ALL SIGNATURES COMPLETED	



MATCH LINE SEE SHEET 10
-L- STA. 105+50.00

MATCH LINE SEE SHEET 12
-L- STA. 119+00.00



MULTI-USE PATH

SEE SHEET 17 FOR -L- PROFILE
SEE SHEET 20 FOR -Y7- PROFILE
SEE SHEET 20 FOR -Y8- PROFILE

REVISIONS

11-APR-2023 15:17
V:\Roadway\Pr-j\U-4424-Fdy-ps-h_11.dgn