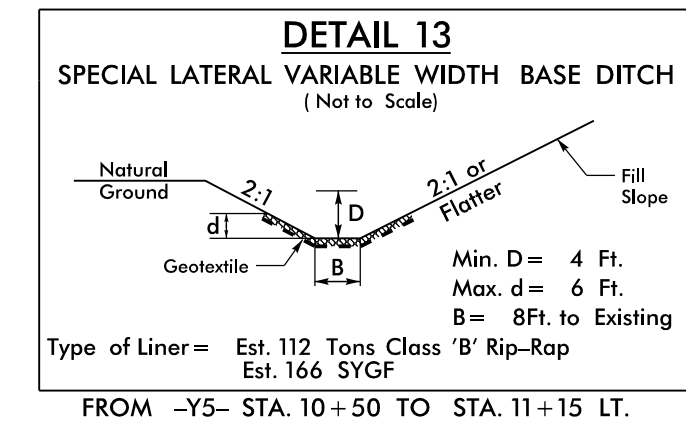
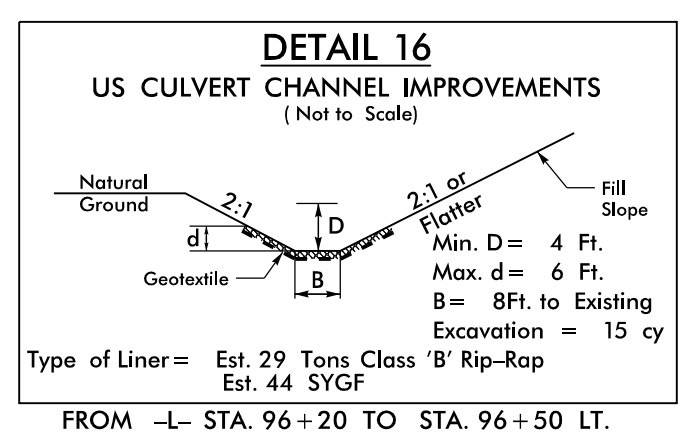


8/17/99

**-Y5- CURVE DATA**  
 PI Sta 10+62.33  
 $\Delta = 3' 28'' 00.0''$  (LT)  
 $D = 5' 43'' 46.5''$   
 $L = 60.50'$   
 $T = 30.26'$   
 $R = 1,000.00'$   
 $e = \text{MATCH EXIST.}$

**-L- CURVE DATA**  
 PIs Sta 99+09.06 PI Sta 105+64.93  
 $\Delta = 1' 55'' 33.3''$   $\Delta = 22' 24'' 19.9''$  (RT)  
 $Ls = 200.00'$   $D = 1' 55'' 33.3''$   
 $LT = 133.34'$   $L = 1463.37'$   
 $ST = 66.67'$   $T = 589.21'$   
 $R = 2,975.00'$   
 $e = 3\%$   
 $Ds = 50 \text{ MPH}$



**NOTE: USE PERMANENT SOIL REINFORCEMENT MAT (PSRM) FROM STA. -Y5- 10+50 LT (+/-) TO STA. -Y6- 11+15 LT (+/-) AND EXTEND PSRM LIMITS TO 2:1(H:V) SLOPE.**

PLANS PREPARED BY:

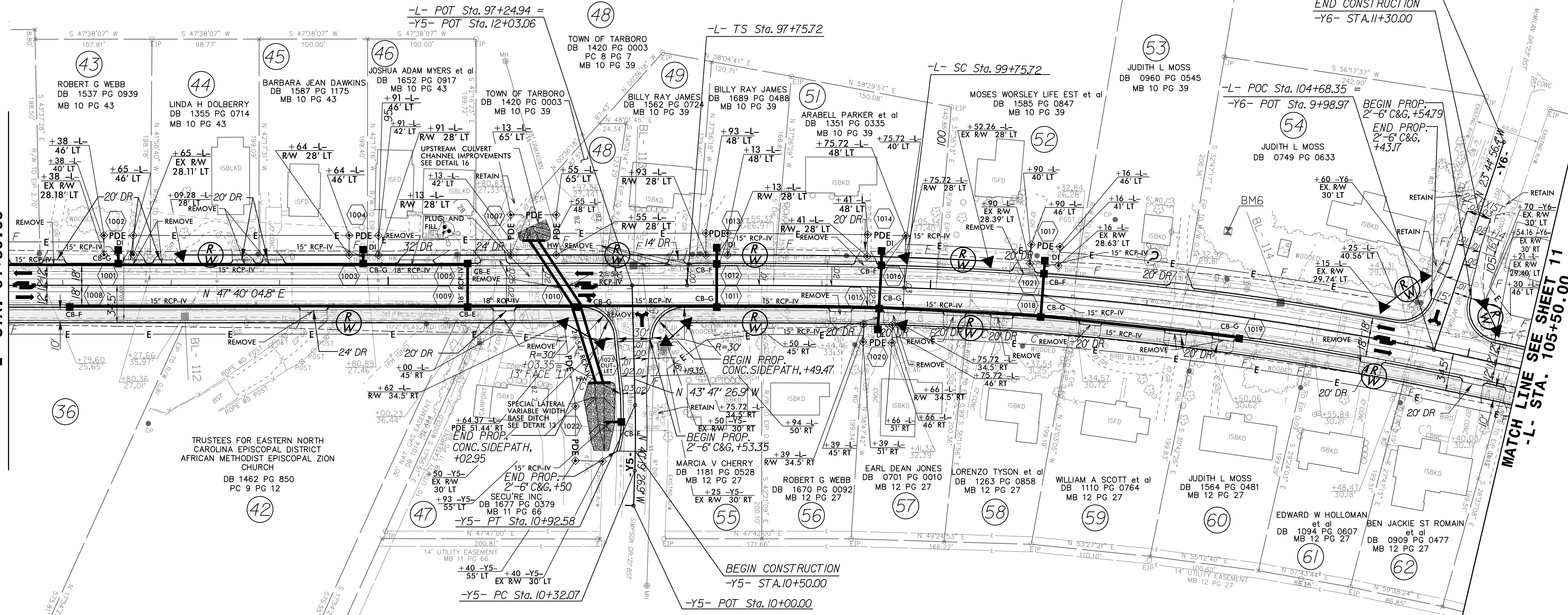
WSP USA  
 434 FAYETTEVILLE STREET  
 SUITE 1500  
 RALEIGH, NC 27601  
 TEL: 919.836.4040  
 FAX: 919.836.4099  
 LICENSE NO. F-0165

PROJECT REFERENCE NO. U-4424	SHEET NO. 10
RW SHEET NO.	HYDRAULICS ENGINEER
ROADWAY DESIGN ENGINEER	SEAL 043232

DOCUMENT NOT CONSIDERED FINAL UNLESS ALL SIGNATURES COMPLETED

MATCH LINE SEE SHEET 09 -L- STA. 91+50.00

MATCH LINE SEE SHEET 11 -L- STA. 105+50.00



**MULTI-USE PATH**

SEE SHEETS 16 & 17 FOR -L- PROFILE  
 SEE SHEET 20 FOR -Y5- PROFILE  
 SEE SHEET 20 FOR -Y6- PROFILE

11-APR-2023 15:17  
 V:\gedway\ProJ\U-4424-LRdy-psm\_10.dgn