

8/17/99

**-L- CURVE DATA**

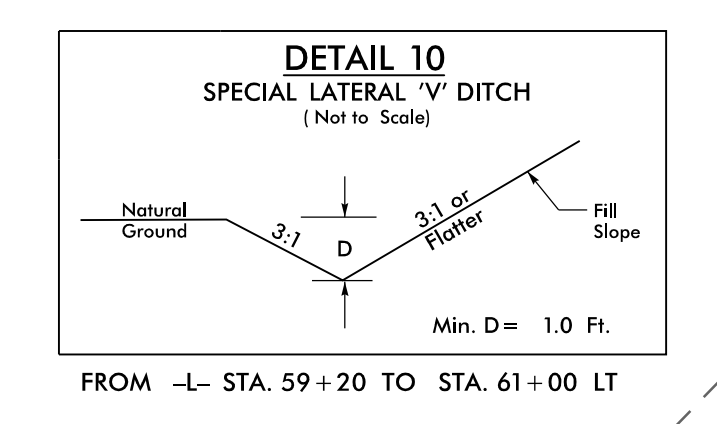
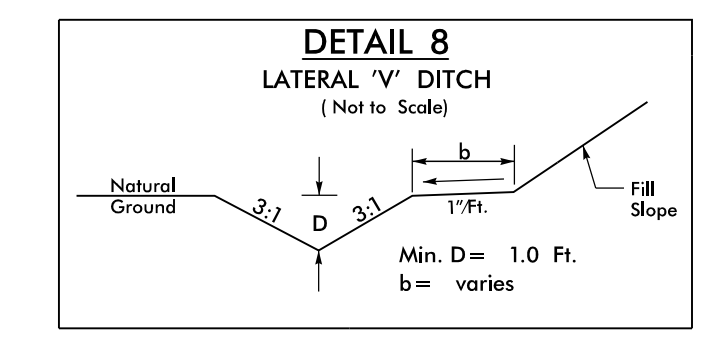
$PI\ Sta\ 49+99.84$	$PIs\ Sta\ 53+13.92$
$\Delta = 9^{\circ}16'55.8" (LT)$	$\Theta_s = 1^{\circ}52'18.5"$
$D = 1^{\circ}52'18.5"$	$L_s = 200.00'$
$L = 495.90'$	$LT = 133.34'$
$T = 248.49'$	$ST = 66.67'$
$R = 3,061.00'$	
$e = 3\%$	
$D_s = 50\ MPH$	

PLANS PREPARED BY:

**WSP**

WSP USA  
434 FAYETTEVILLE STREET  
SUITE 1500  
RALEIGH, NC 27601  
TEL: 1.919.836.4040  
FAX: 1.919.836.4099  
LICENSE NO. F-0165

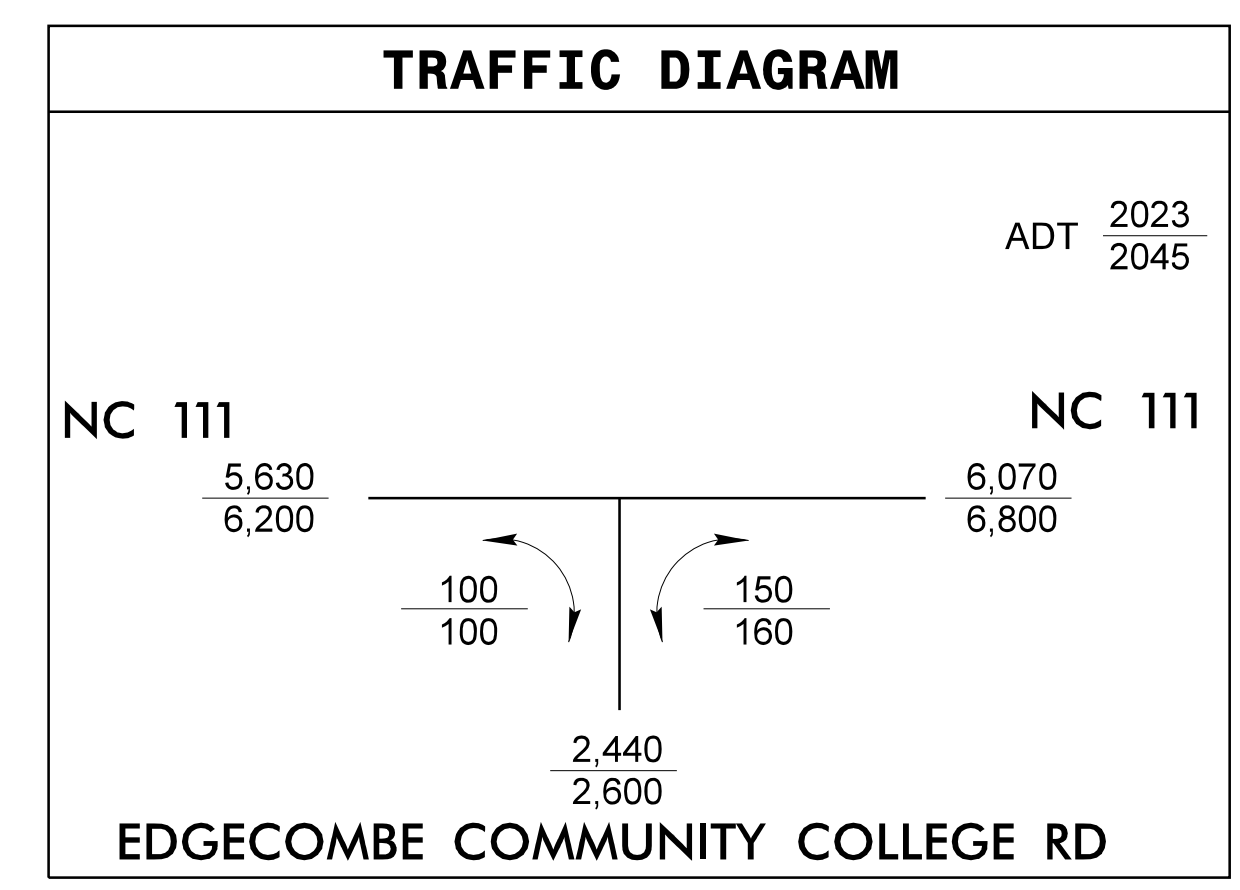
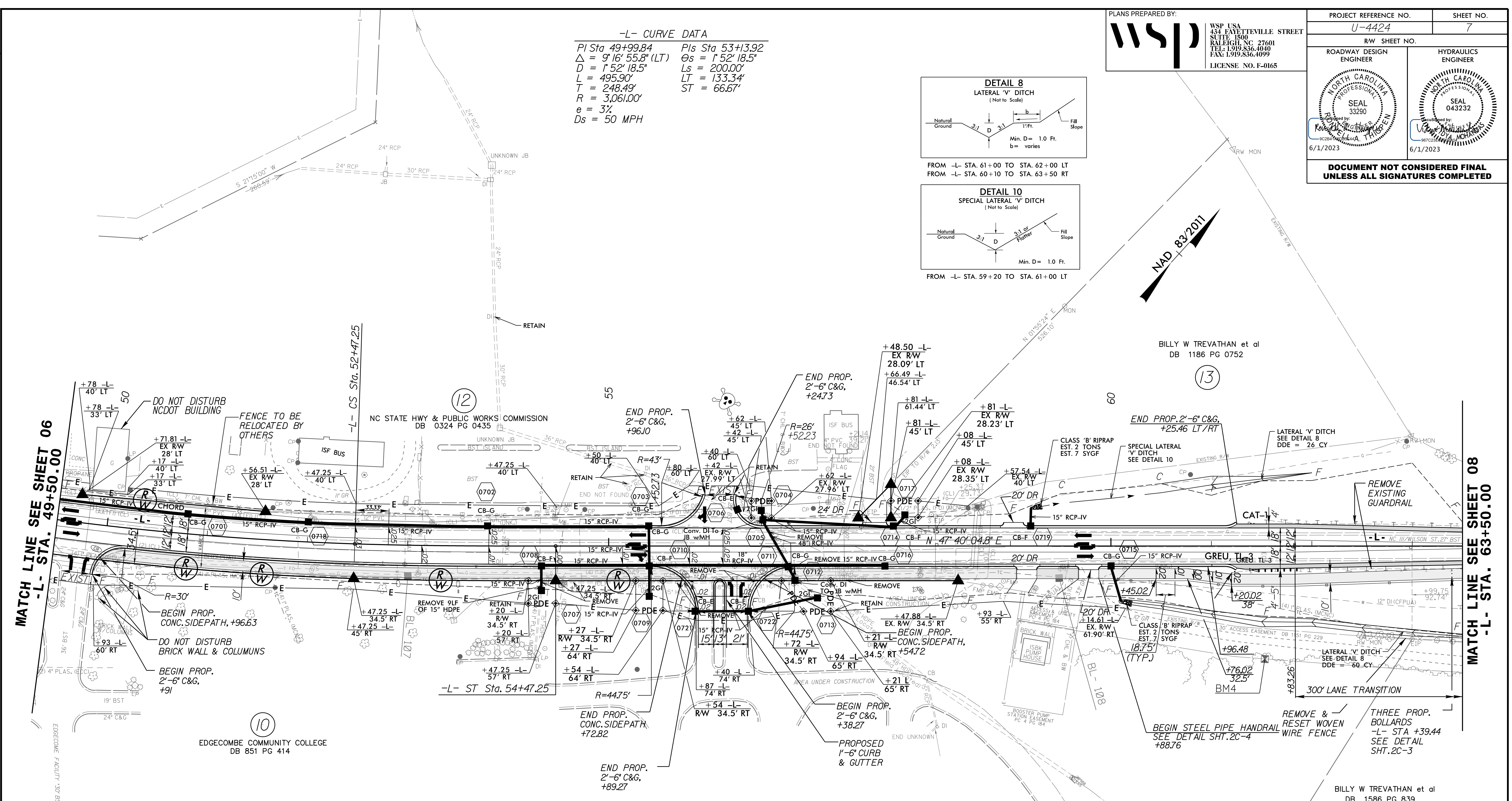
PROJECT REFERENCE NO. U-4424	SHEET NO. 7
ROADWAY DESIGN ENGINEER	HYDRAULICS ENGINEER
<b>DOCUMENT NOT CONSIDERED FINAL UNLESS ALL SIGNATURES COMPLETED</b>	



REVISIONS

MATCH LINE SEE SHEET 06  
-L- STA. 49+50.00

MATCH LINE SEE SHEET 08  
-L- STA. 63+50.00



**MULTI-USE PATH**

SEE SHEET 15 FOR -L- PROFILE

01-JUN-2023 11:04  
C:\pedway\p-roj\U-4424-Fdy-psn\_07.dgn