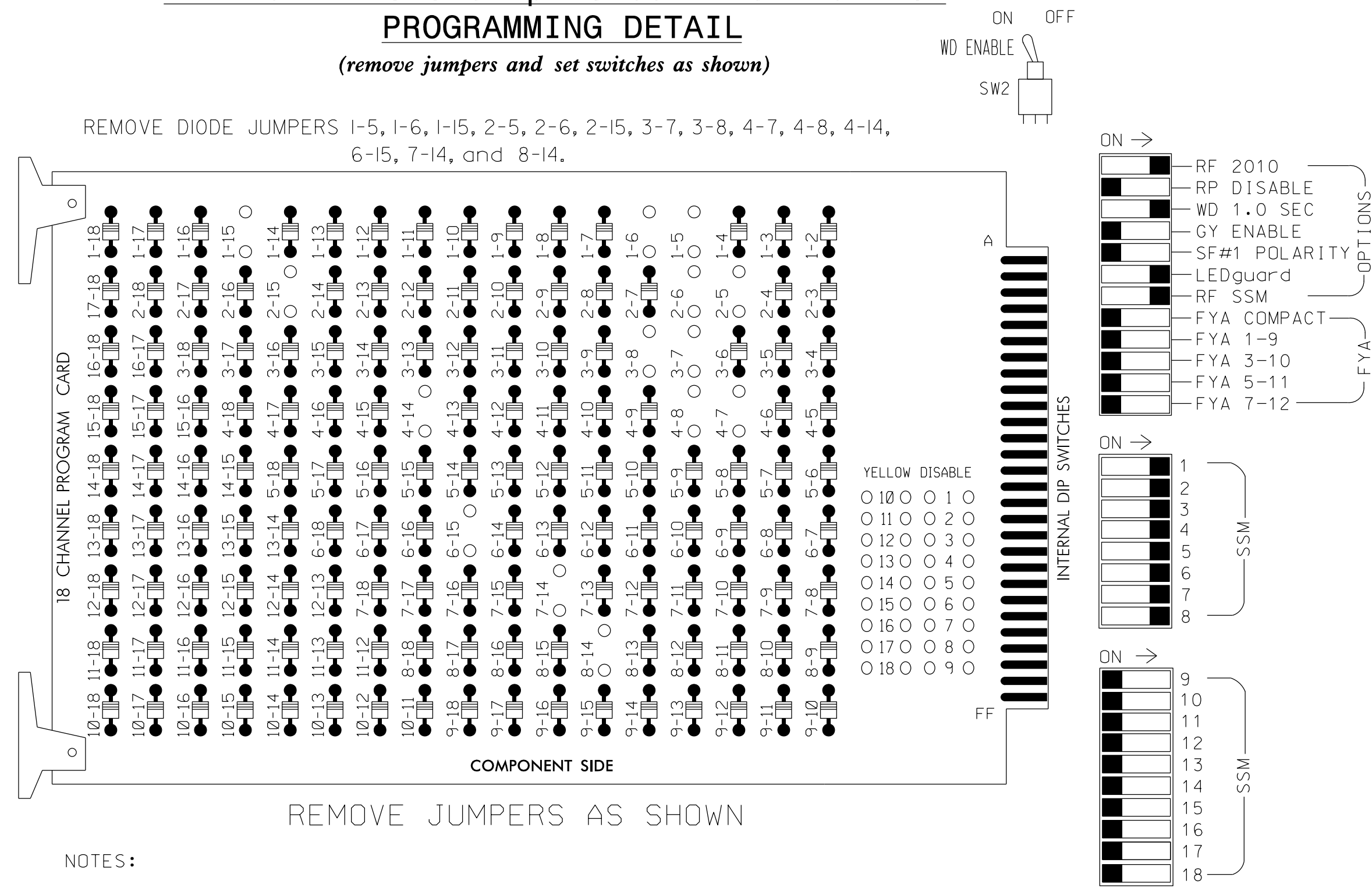


**EDI MODEL 2018ECLip-NC CONFLICT MONITOR PROGRAMMING DETAIL**

(remove jumpers and set switches as shown)



**NOTES:**

- Card is provided with all diode jumpers in place. Removal of any jumper allows its channels to run concurrently.
- Ensure jumpers SEL2-SEL5 and SEL9 are present on the monitor board.
- Ensure that Red Enable is active at all times during normal operation.
- Integrate monitor with Ethernet network in cabinet.

**NOTES**

- To prevent "flash-conflict" problems, insert red flash program blocks for all unused vehicle load switches in the output file. The installer shall verify that signal heads flash in accordance with the Signal Plans.
- Program controller to start up in phase 2 Green and 6 Walk.
- The cabinet and controller are part of the Fayetteville Signal System.

**SIGNAL HEAD HOOK-UP CHART**

LOAD SWITCH NO.	S1	S2	S3	S4	S5	S6	S7	S8	S9	S10	S11	S12
CMU CHANNEL NO.	1	2	13	3	4	14	5	6	15	7	8	16
PHASE	1	2	2 PED	3	4	4 PED	5	6	6 PED	7	8	8 PED
SIGNAL HEAD NO.	11	21,22	NU	31	41,42	P41, P42	51	61,62	P61, P62	71	81,82	NU
RED		128			101			134			107	
YELLOW		129			102			135			108	
GREEN		130			103			136			109	
RED ARROW	125			116			131			122		
YELLOW ARROW	126			117			132			123		
GREEN ARROW	127			118			133			124		
Hand icon							104			119		
Walking person icon							106			121		

NU = Not Used

**EQUIPMENT INFORMATION**

CONTROLLER.....2070  
 CABINET.....332  
 SOFTWARE.....ECONOLITE ASC/3-2070  
 CABINET MOUNT.....BASE  
 OUTPUT FILE POSITIONS...12  
 LOAD SWITCHES USED.....S1,S2,S4,S5,S6,S7,S8,S9,S10,S11  
 PHASES USED.....1,2,3,4,4 PED,5,6,6 PED,7,8  
 OVERLAPS.....NONE

**INPUT FILE POSITION LAYOUT**

(front view)

	1	2	3	4	5	6	7	8	9	10	11	12	13	14		
FILE "I"	∅ 1 1A	∅ 2 2A	∅ 2 2C	∅ 3 3A	∅ 4 4A	∅ 5 5A	∅ 6 6A	∅ 6 6C	∅ 7 7A	∅ 8 8A	∅ 9 9A	∅ 10 10A	∅ 11 11A	∅ 12 12A	∅ 13 13A	∅ 14 14A
FILE "J"	NOT USED	∅ 2 2B	NOT USED	NOT USED	NOT USED	NOT USED	NOT USED	NOT USED	NOT USED	NOT USED	NOT USED	NOT USED	NOT USED	NOT USED	NOT USED	NOT USED

EX.: 1A, 2A, ETC. = LOOP NO.'S

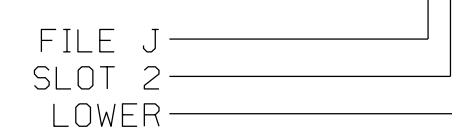
FS = FLASH SENSE  
 ST = STOP TIME

**INPUT FILE CONNECTION & PROGRAMMING CHART**

LOOP NO.	LOOP TERMINAL	INPUT FILE POS.	PIN NO.	DETECTOR NO.	NEMA PHASE	CALL	EXTEND TIME	DELAY TIME	ADDED INITIAL	DETECTOR TYPE
1A	TB2-1,2	I1U	56	1	1	YES				S
2A	TB2-5,6	I2U	39	2	2	YES			X	N
2B	TB2-7,8	I2L	43	12	2	YES			X	N
2C	TB2-9,10	I3U	63	32	2	YES			X	N
3A	TB4-5,6	I5U	58	3	3	YES		3		S
4A	TB4-9,10	I6U	41	4	4	YES		10		S
5A	TB3-1,2	J1U	55	5	5	YES				S
6A	TB3-5,6	J2U	40	6	6	YES			X	N
6B	TB3-7,8	J2L	44	16	6	YES			X	N
6C	TB3-9,10	J3U	64	36	6	YES			X	N
7A	TB5-5,6	J5U	57	7	7	YES		3		S
8A	TB5-9,10	J6U	42	8	8	YES		10		S
PED PUSH BUTTONS										
P41,P42	TB8-5,6	I12L	69	PED 4	4 PED					
P61,P62	TB8-7,9	I13U	68	PED 6	6 PED					

NOTE:  
 INSTALL DC ISOLATORS IN INPUT FILE SLOTS I12 AND I13.

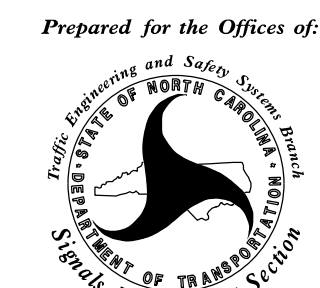
**INPUT FILE POSITION LEGEND: J2L**



**Electrical Detail - Sheet 1 of 1**

DOCUMENT NOT CONSIDERED FINAL UNLESS ALL SIGNATURES COMPLETED

ELECTRICAL AND PROGRAMMING DETAILS FOR:



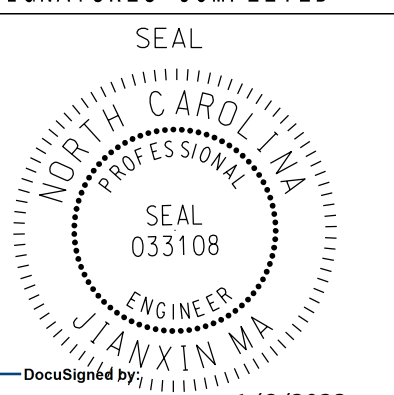
750 N. Greenfield Pkwy, Garner, NC 27529

**NC 24-87 (Bragg Boulevard) at Elm Street**

Division 6 Cumberland County Fayetteville

PLAN DATE: December 2022 REVIEWED BY: J. Ma  
 PREPARED BY: J. Townsend REVIEWED BY: M.L. Stygles

REVISIONS	INIT.	DATE



DocuSigned by: J. Ma 1/6/2023

SIG. INVENTORY NO. 06-0033

THIS ELECTRICAL DETAIL IS FOR THE SIGNAL DESIGN: 06-0033  
 DESIGNED: December 2022  
 SEALED: 1/6/2023  
 REVISED: N/A



VHB Engineering NC, P.C. (C-3705)  
 940 Main Campus Drive, Suite 500  
 Raleigh, NC 27606  
 919.829.0328

\*\*\*\*\*SYTIME\*\*\*\*\*  
 \*\*\*\*\*\*\*\*\*\*  
 \*\*\*\*\*\*\*\*\*\*  
 \*\*\*\*\*\*\*\*\*\*