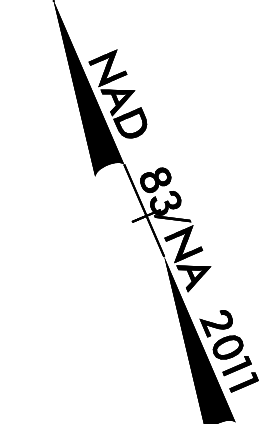
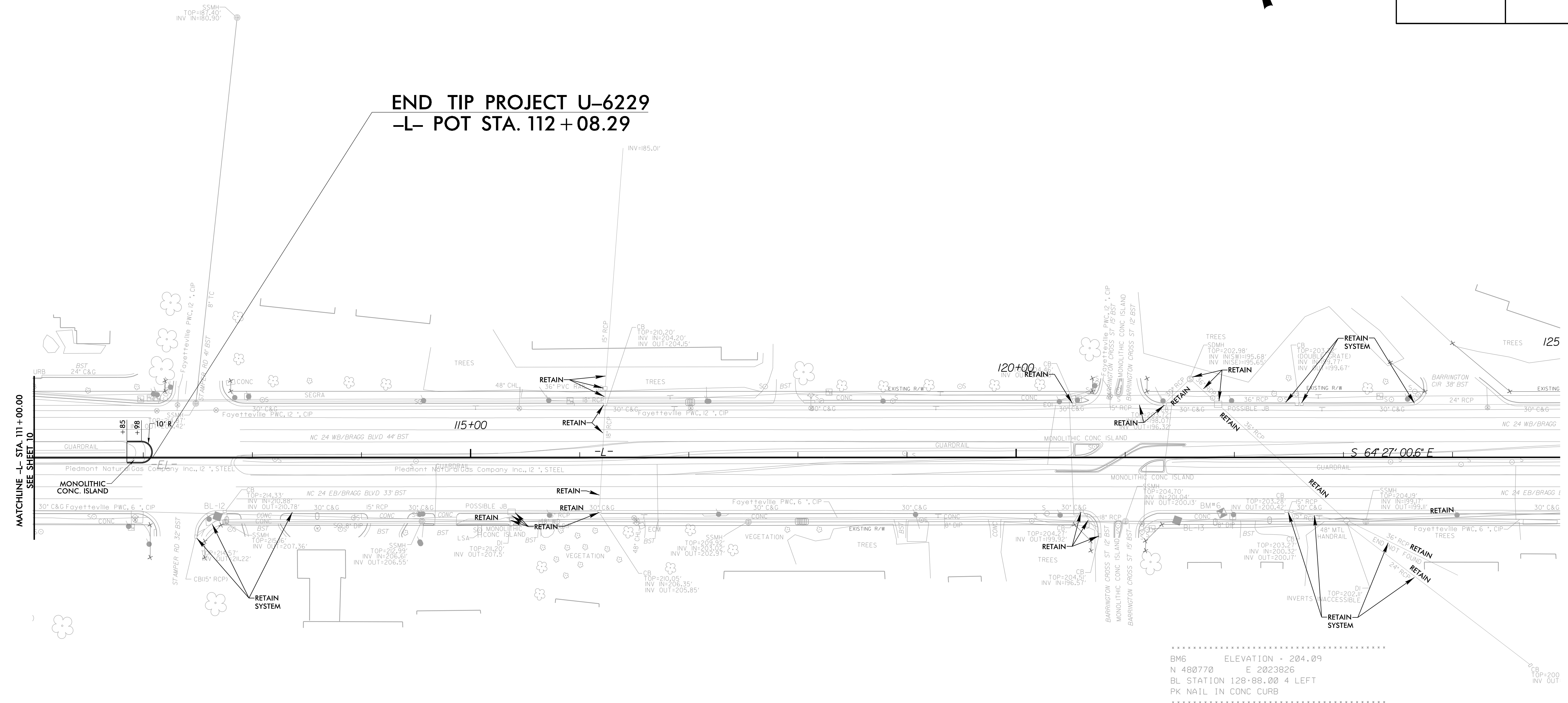


PROJECT REFERENCE NO.	SHEET NO.
U-6229	EC-19/CONST.II
RW SHEET NO.	
ROADWAY DESIGN ENGINEER	HYDRAULICS ENGINEER



INSTALL FABRIC INSERT INLET PROTECTION DEVICE IN LIEU OF ROCK INLET SEDIMENT TRAP TYPE 'C' AS DIRECTED TO AVOID PONDING OF RUNOFF IN ROADWAY OPEN TO PUBLIC TRAFFIC

END TIP PROJECT U-6229
-L- POT STA. 112 + 08.29



.....
 BM6 ELEVATION = 204.09
 N 480770 E 2023826
 BL STATION 128+88.00 4 LEFT
 PK NAIL IN CONC CURB

■ MILLING AND RESURFACING LIMITS

★ EXISTING SIGNAL TO BE MODIFIED