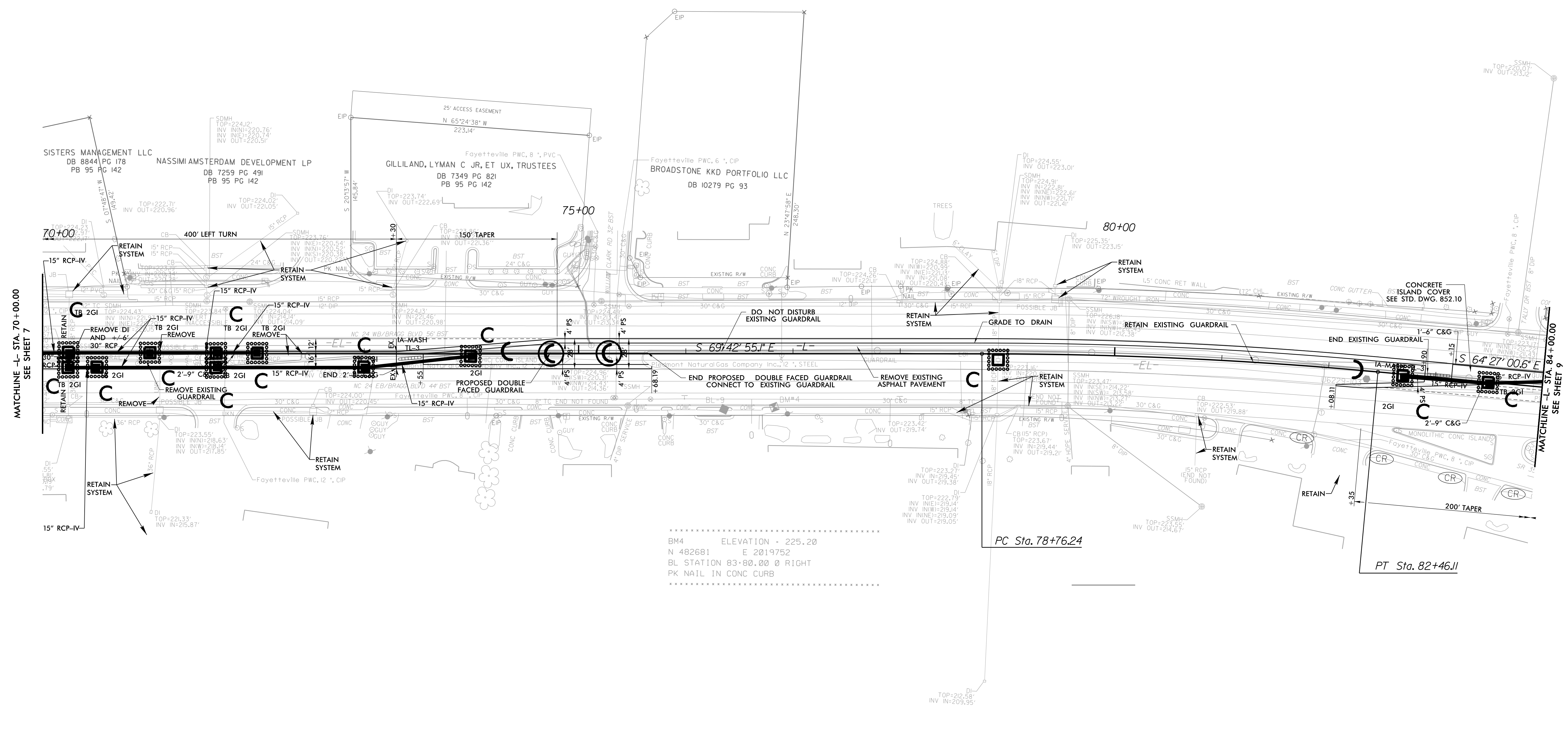
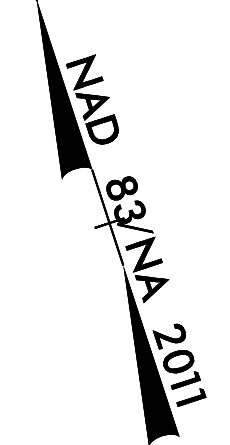


PROJECT REFERENCE NO.	SHEET NO.
U-6229	EC-16/CONST.08
RW SHEET NO.	
ROADWAY DESIGN ENGINEER	HYDRAULICS ENGINEER

INSTALL FABRIC INSERT INLET PROTECTION DEVICE IN LIEU OF ROCK INLET SEDIMENT TRAP TYPE 'C' AS DIRECTED TO AVOID PONDING OF RUNOFF IN ROADWAY OPEN TO PUBLIC TRAFFIC



MATCHLINE -L- STA. 70+00.00
SEE SHEET 7

MATCHLINE -L- STA. 84+00.00
SEE SHEET 9

.....
BM4 ELEVATION + 225.20
N 482681 E 2019752
BL STATION 83+80.00 0 RIGHT
PK NAIL IN CONC CURB
.....

PC Sta. 78+76.24

PT Sta. 82+46.11

■ MILLING AND RESURFACING LIMITS

☆ EXISTING SIGNAL TO BE MODIFIED

-L- CURVE DATA

PI Sta 80+61.31
Δ = 5' 15' 54.6" (RT)
D = 1' 25' 24.6"
L = 369.87'
T = 185.07'
R = 4,025.00'
SE = NA