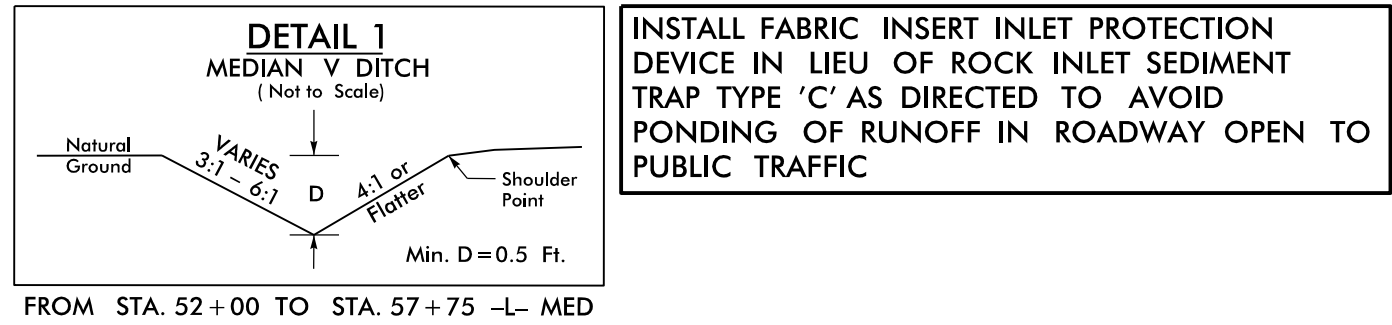
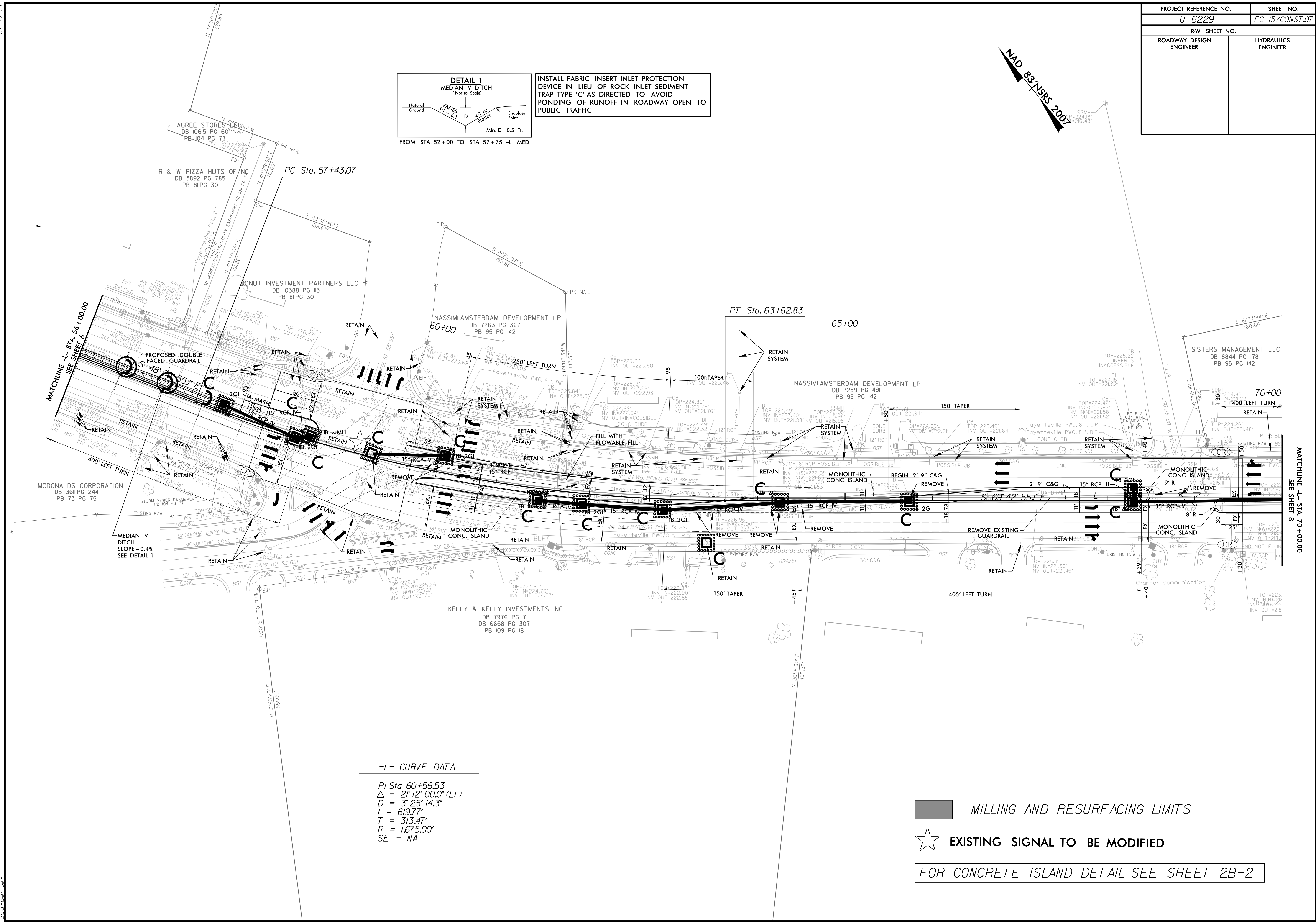


PROJECT REFERENCE NO.	SHEET NO.
U-6229	EC-15/CONST.07
RW SHEET NO.	
ROADWAY DESIGN ENGINEER	HYDRAULICS ENGINEER



NAD 82 NSRS 2007



-L- CURVE DATA
 PI Sta 60+56.53
 $\Delta = 21^{\circ}12'00.0\"$ (LT)
 $D = 3^{\circ}25'14.3\"$
 $L = 619.77'$
 $T = 313.47'$
 $R = 1675.00'$
 $SE = NA$

- MILLING AND RESURFACING LIMITS
 - EXISTING SIGNAL TO BE MODIFIED
- FOR CONCRETE ISLAND DETAIL SEE SHEET 2B-2

8/17/99
 11:29:35 AM
 C:\Users\jacob\Documents\Design\PSH\U6229_REU_EC_PSH07.F.ina1.dgn
 COORDINATOR