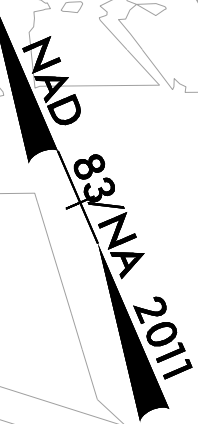


PROJECT REFERENCE NO.	SHEET NO.
U-6229	EC-10/CONST.10
RW SHEET NO.	
ROADWAY DESIGN ENGINEER	HYDRAULICS ENGINEER

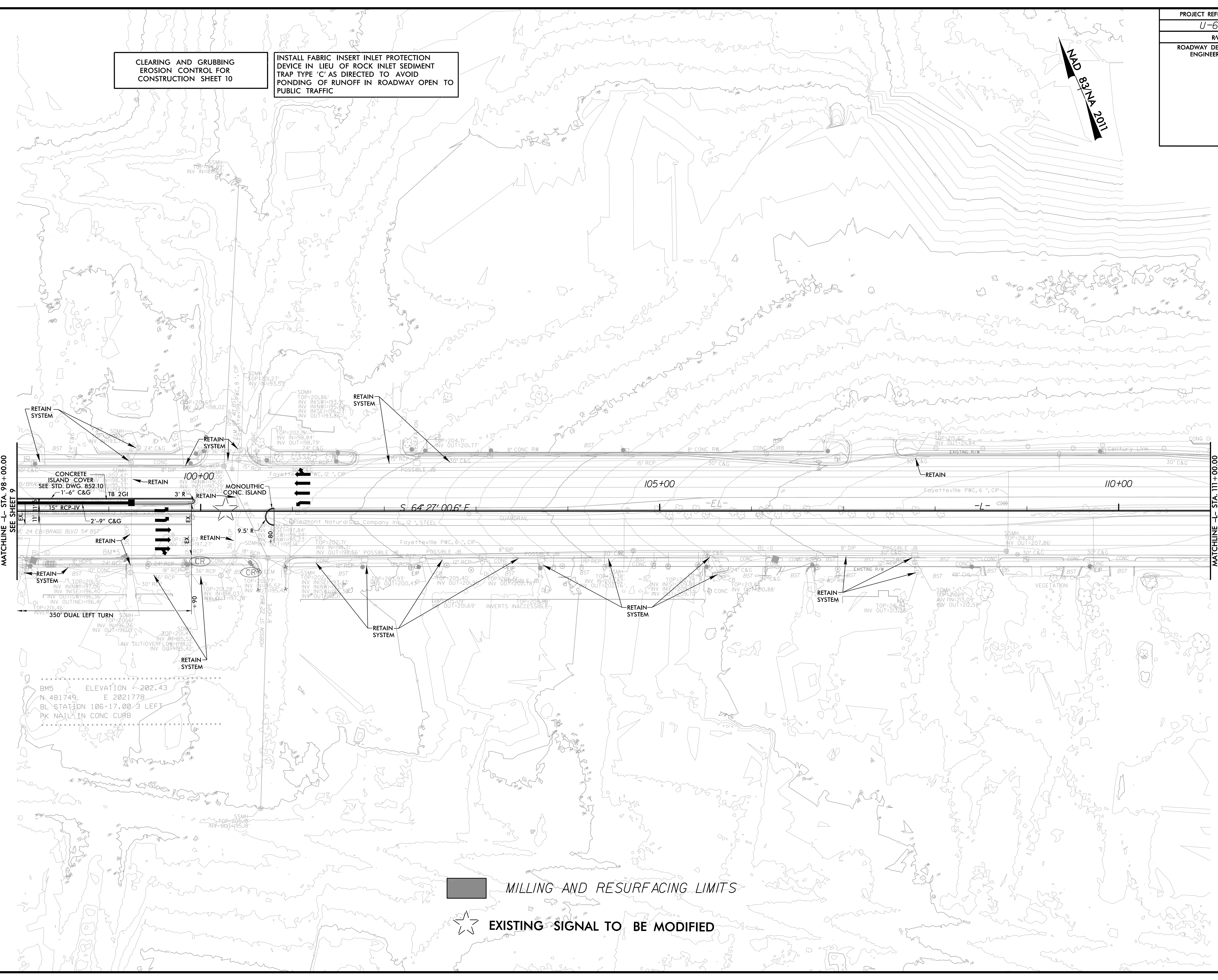
CLEARING AND GRUBBING EROSION CONTROL FOR CONSTRUCTION SHEET 10

INSTALL FABRIC INSERT INLET PROTECTION DEVICE IN LIEU OF ROCK INLET SEDIMENT TRAP TYPE 'C' AS DIRECTED TO AVOID PONDING OF RUNOFF IN ROADWAY OPEN TO PUBLIC TRAFFIC



MATCHLINE -L- STA. 98 + 00.00
SEE SHEET 9

MATCHLINE -L- STA. 111 + 00.00
SEE SHEET 11



BM5 ELEVATION 202.43
N 481749 E 2021778
BL STATION 106+17.00 3 LEFT
PK NAIL IN CONC CURB

■ MILLING AND RESURFACING LIMITS
★ EXISTING SIGNAL TO BE MODIFIED

8/17/99
11/29/24 AM
I:\Projects\Environmental\Design\PSH\U6229_REU_EC_PSH10.CG.dgn
C:\Users\psh\Documents\PSH\U6229_REU_EC_PSH10.CG.dgn