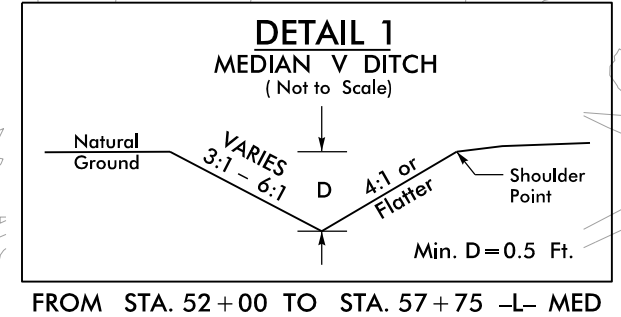
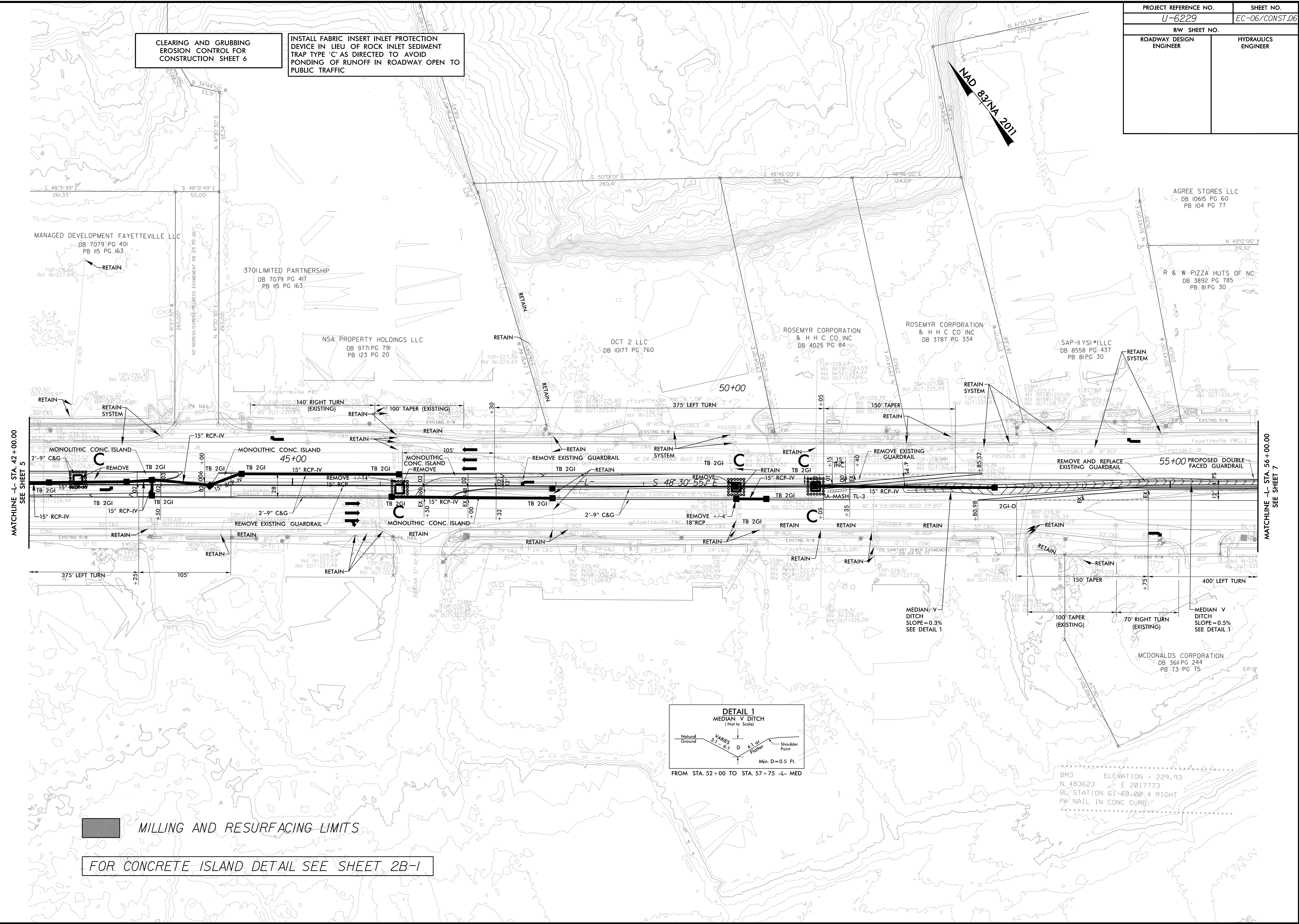


PROJECT REFERENCE NO.	SHEET NO.
U-6229	EC-06/CONST.06
RW SHEET NO.	
ROADWAY DESIGN ENGINEER	HYDRAULICS ENGINEER

CLEARING AND GRUBBING EROSION CONTROL FOR CONSTRUCTION SHEET 6

INSTALL FABRIC INSERT INLET PROTECTION DEVICE IN LIEU OF ROCK INLET SEDIMENT TRAP TYPE 'C' AS DIRECTED TO AVOID PONDING OF RUNOFF IN ROADWAY OPEN TO PUBLIC TRAFFIC



MILLING AND RESURFACING LIMITS

FOR CONCRETE ISLAND DETAIL SEE SHEET 2B-1

8/17/99

11:29:15 AM
C:\Users\jacob\Documents\Design\PSH\U6229_REU_EC_PSH06.CG.dgn