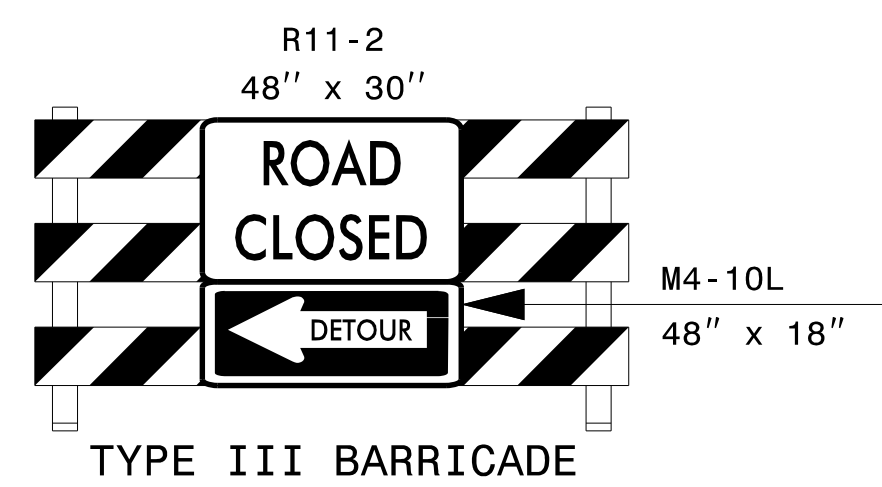


NOTES:

1. TRAFFIC CONTROL DEVICES (A) SHALL BE INSTALLED PER ENGINEER'S INSTRUCTIONS.
2. USE THIS SHEET IN CONJUNCTION WITH RSD 1101.02 SHEET 3 OF 14 TO PLACE SIGNS AND DEVICES AND TO CLOSE LANE.
3. USE THIS SHEET IN CONJUNCTION WITH TMP-41.

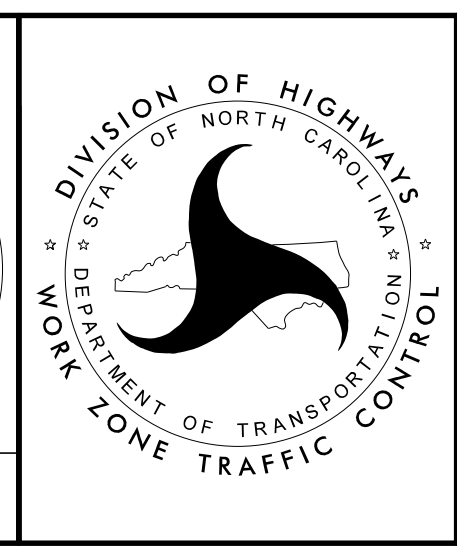


APPROVED: *Jacob H. Duke*
 DATE: 1/25/2023

DocuSigned by:
 Jacob H. Duke
 29630C8054E84D9

PROFESSIONAL ENGINEER
 SEAL
 043777
 JACOB H. DUKE

**DOCUMENT NOT CONSIDERED FINAL
 UNLESS ALL SIGNATURES COMPLETED**



**I-77 SB
 HOT LANES
 DETOUR DETAILS**