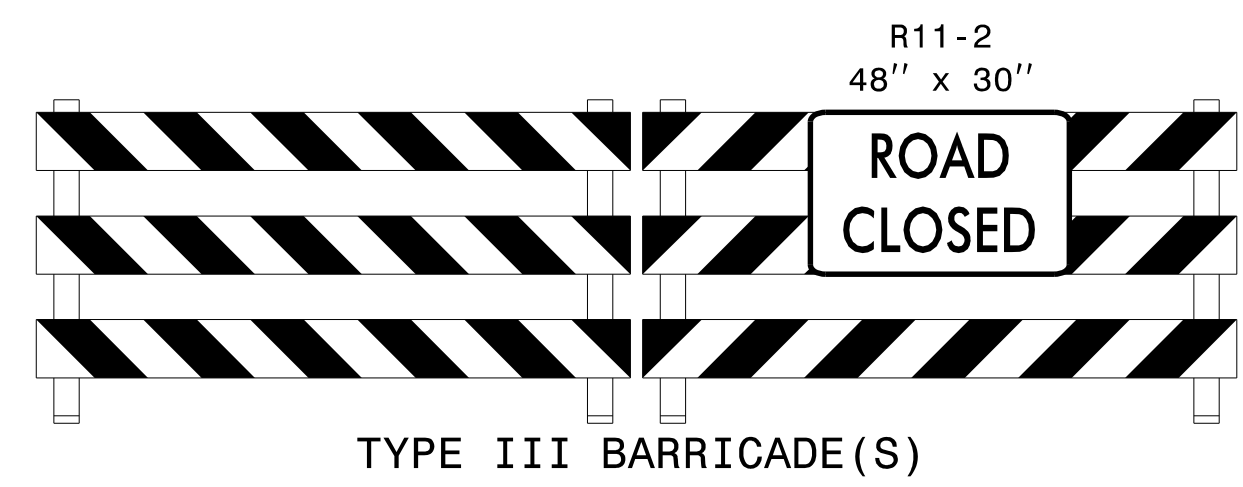


DETOUR DESCRIPTION:

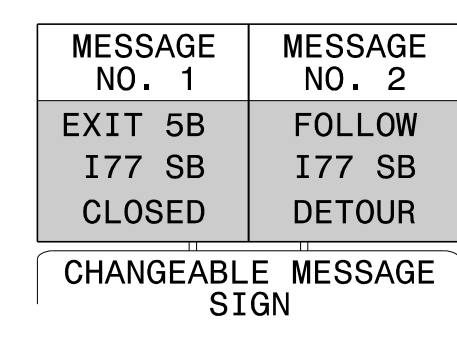
SOUTH: I-277 SOUTH INNER TO EXIT 4 NC 49 (GRAHAM ST) TO I-277 NORTH OUTER TO EXIT 5C I-77 SOUTH.

NOTES:

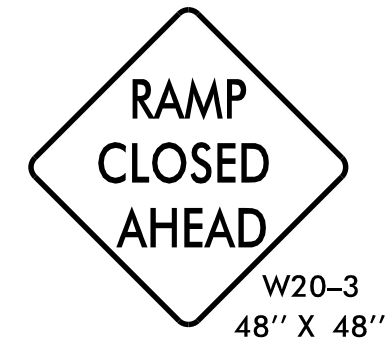
1. TRAFFIC CONTROL DEVICES (A) THRU (L) SHALL BE INSTALLED PER ENGINEER'S INSTRUCTIONS.
2. ALL SIGNAGE IS SPACED PER RSD 1101.11 SHEET 4 OF 4, UNLESS OTHERWISE NOTED.
3. USE THIS SHEET IN CONJUNCTION WITH RSD 1101.01 SHEETS 1 THRU 3 OF 3, AND TMP-10.



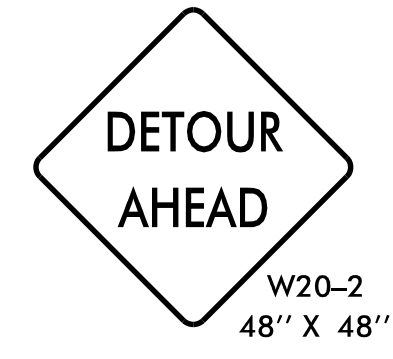
TYPE III BARRICADE(S)



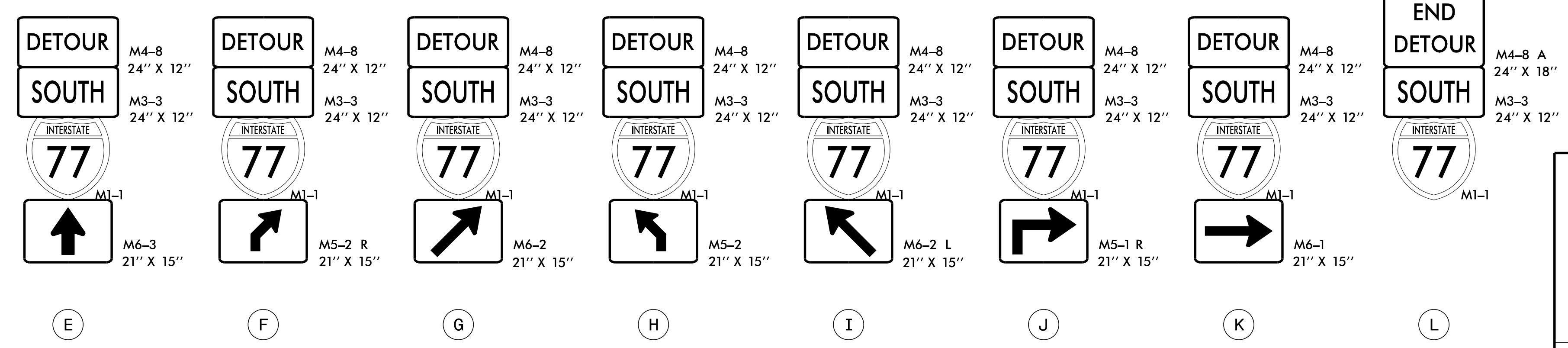
(B)



(C)



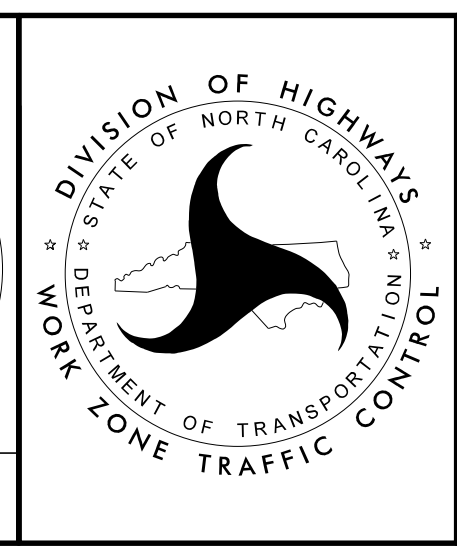
(D)



APPROVED: *Jacob H. Duke*
 DATE: 1/25/2023

DocuSigned by:
 Jacob H. Duke
 29630C8054E84D9

SEAL
 043777
 ENGINEER
 JACOB H. DUKE



RAMP 2 DETOUR

DOCUMENT NOT CONSIDERED FINAL UNLESS ALL SIGNATURES COMPLETED

1/25/2023 I-6052_TC_TMP_RAMP_2_DETOUR.dgn User: jdebone