

STATE OF NORTH CAROLINA
DIVISION OF HIGHWAYS

EDGECOMBE COUNTY

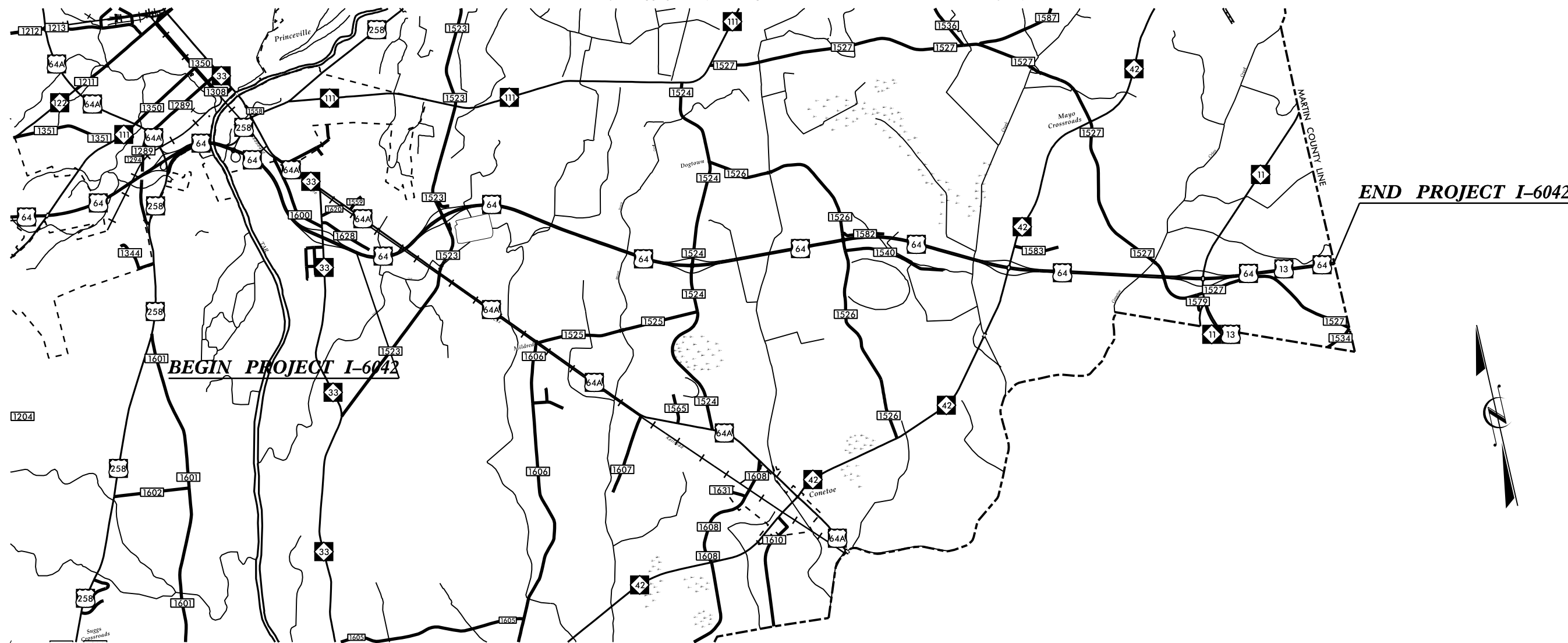
LOCATION: US 64 (FUTURE I-87) FROM NC-33
TO MARTIN COUNTY LINE.

TYPE OF WORK: PAVEMENT REHABILITATION.

STATE	STATE PROJECT REFERENCE NO.	SHEET NO.	TOTAL SHEETS
N.C.	I-6042	1	
STATE PROJ. NO.	F.A. PROJ. NO.	DESCRIPTION	
47991.1.1	0087049	PE	
47991.3.1	0087049	CONST	

TIP PROJECT: I-6042

CONTRACT: C204819



VICINITY MAP

21-FEB-2023 14:07
C:\Users\drehring\OneDrive\Desktop\I-6042\I-6042-DDC4_Lsh.dgn
Division 4 DDC

DESIGN DATA
ADT 2017 = 12500

FUNCTIONAL CLASS
OTHER FREEWAY
(FUTURE INTERSTATE)

PROJECT LENGTH

LENGTH ROADWAY (WBL) TIP PROJECT I-6042 = 10.22 MILES
TOTAL LENGTH TIP PROJECT I-6042 = 10.22 MILES

Prepared in the Office of:
DIVISION OF HIGHWAYS
Division 4 DDC
509 Ward Blvd., Wilson NC, 27895

2018 STANDARD SPECIFICATIONS

RIGHT OF WAY DATE:
NA

LETTING DATE:
MAY 16, 2023

KEITH EASON, PE
PROJECT ENGINEER

D.R. ETHRIDGE
PROJECT DESIGN ENGINEER

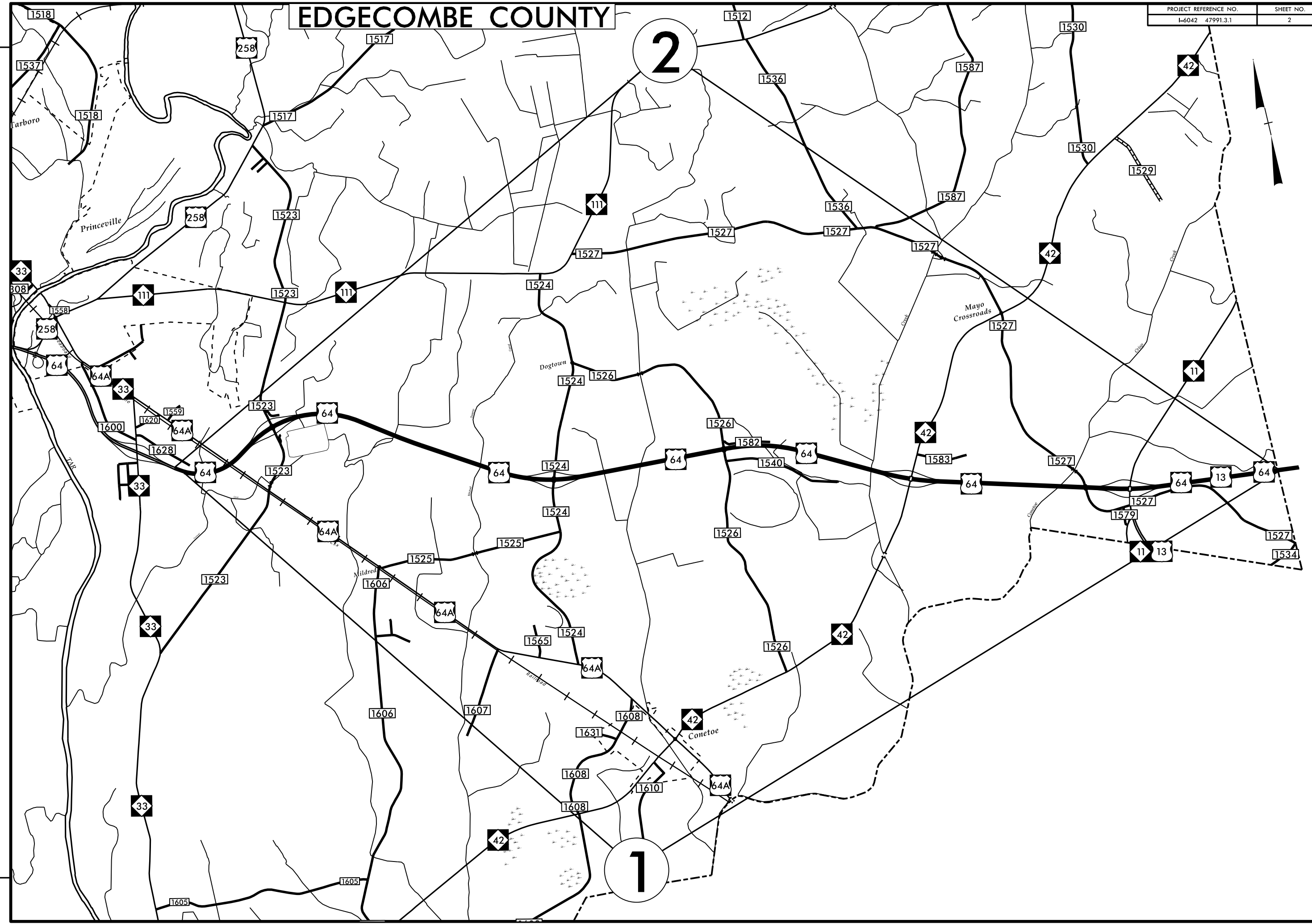


EDGECOMBE COUNTY

PROJECT REFERENCE NO.	SHEET NO.
I-6042 47991.3.1	2

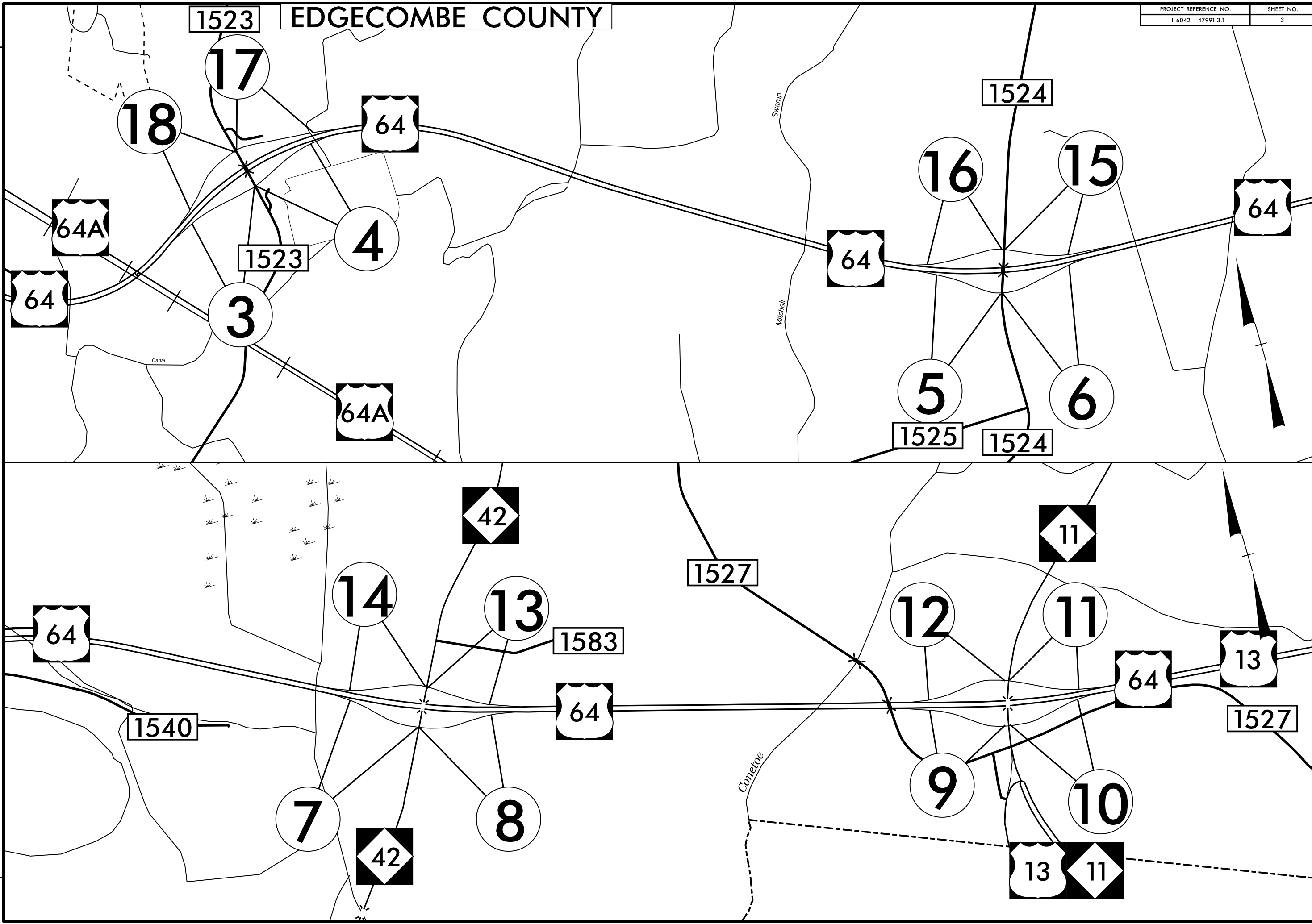
2

1



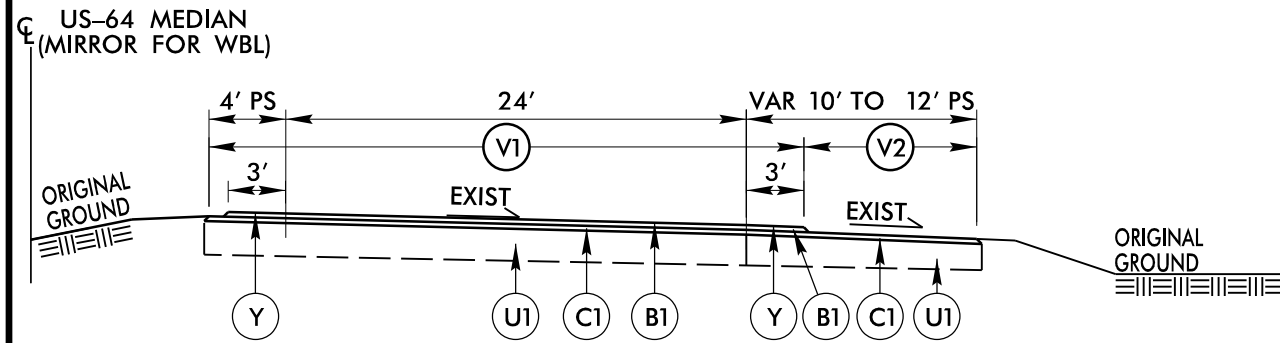
REVISIONS

30-JAN-2023 11:42
 C:\Users\drehrtdge\Desktop\I-6042\I-6042\I-6042_DDCA_MAPS_PRINT 1.dgn
 Division 4 DDC

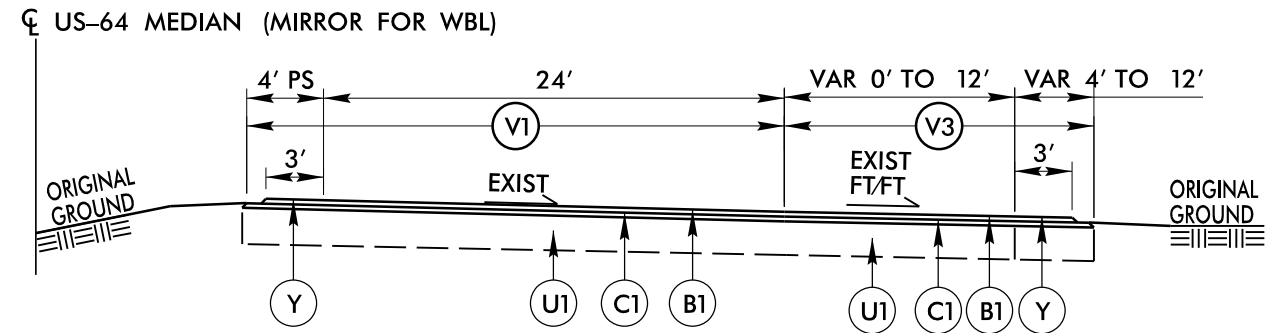


PAVEMENT SCHEDULE

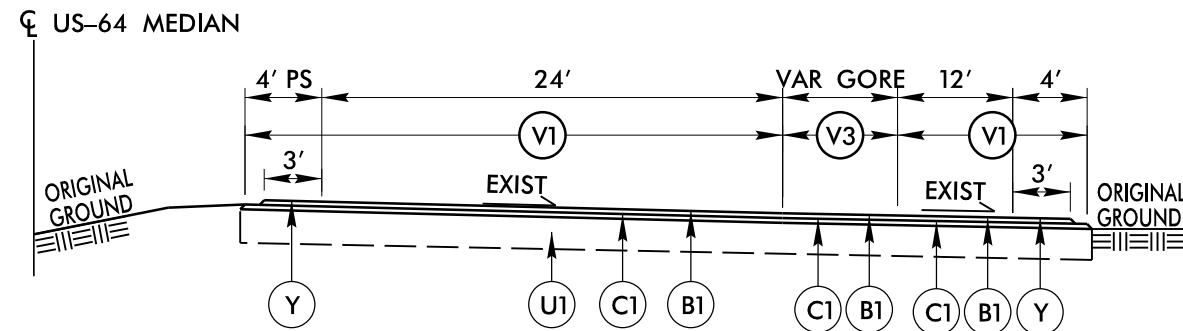
B1	PROP. OPEN-GRADED ASPHALT FRICTION COURSE, TYPE FC-1 MOD, AT AN AVERAGE RATE OF 90 LBS. PER SQ. YARD.	U1	EXISTING PAVEMENT.	V3	INCIDENTAL MILLING
C1	PROP. APPROX. 2" ASPHALT CONCRETE SURFACE COURSE, TYPE S9.5D, AT AN AVERAGE RATE OF 224 LBS. PER SQ. YARD.	V1	MILLING ASPHALT PAVEMENT. 2.75" DEPTH.	Y	MILLED RUMBLE STRIPS (ASPHALT CONCRETE)
		V2	MILLING ASPHALT PAVEMENT. 2" DEPTH.	NOTE: PAVEMENT EDGE SLOPES ARE 1:1 UNLESS SHOWN OTHERWISE.	



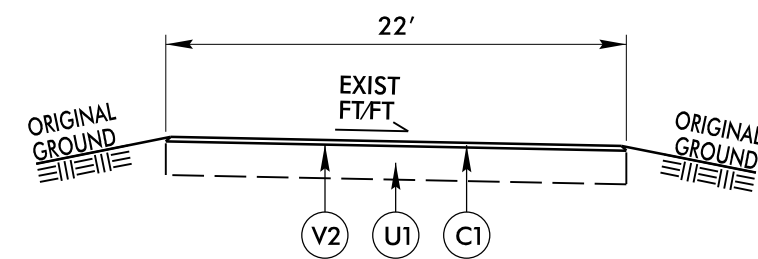
TYPICAL SECTION NO. 1
US-64



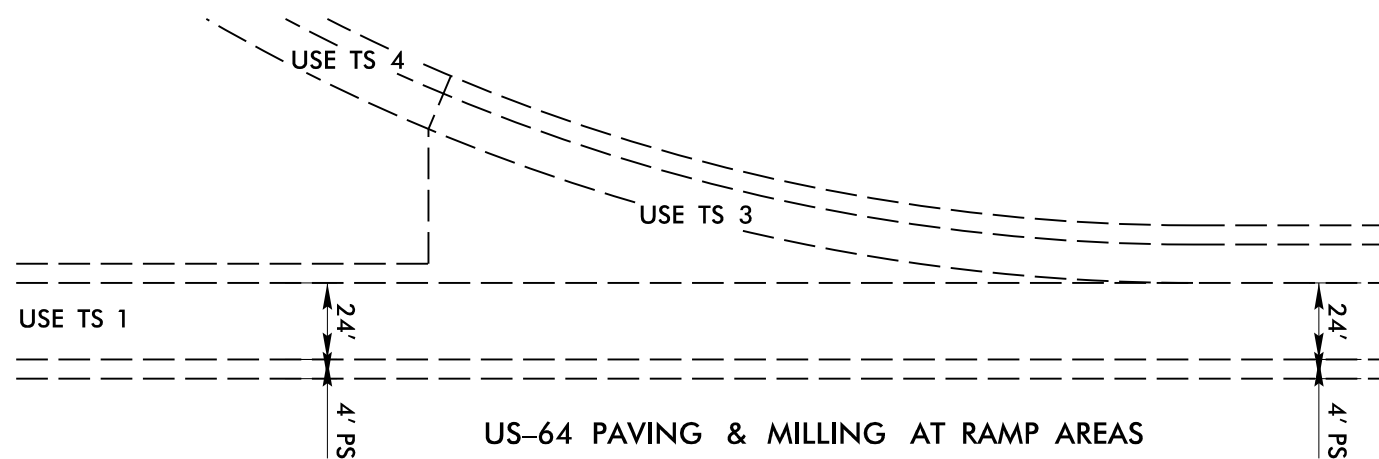
TYPICAL SECTION NO. 2
US-64 @ RAMP



TYPICAL SECTION NO. 3
US-64 @ RAMP & LOOP GORE AREA



TYPICAL SECTION NO. 4
ALL RAMP PAST GORE

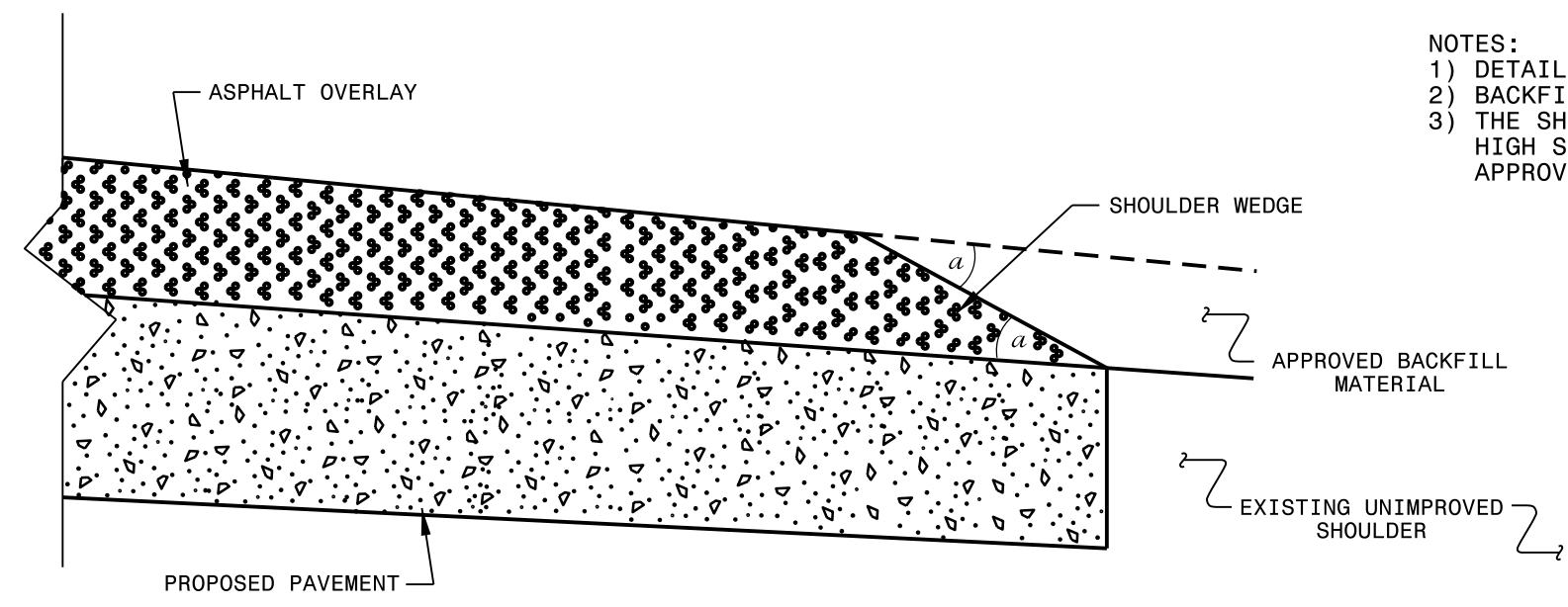


US-64 PAVING & MILLING AT RAMP AREAS

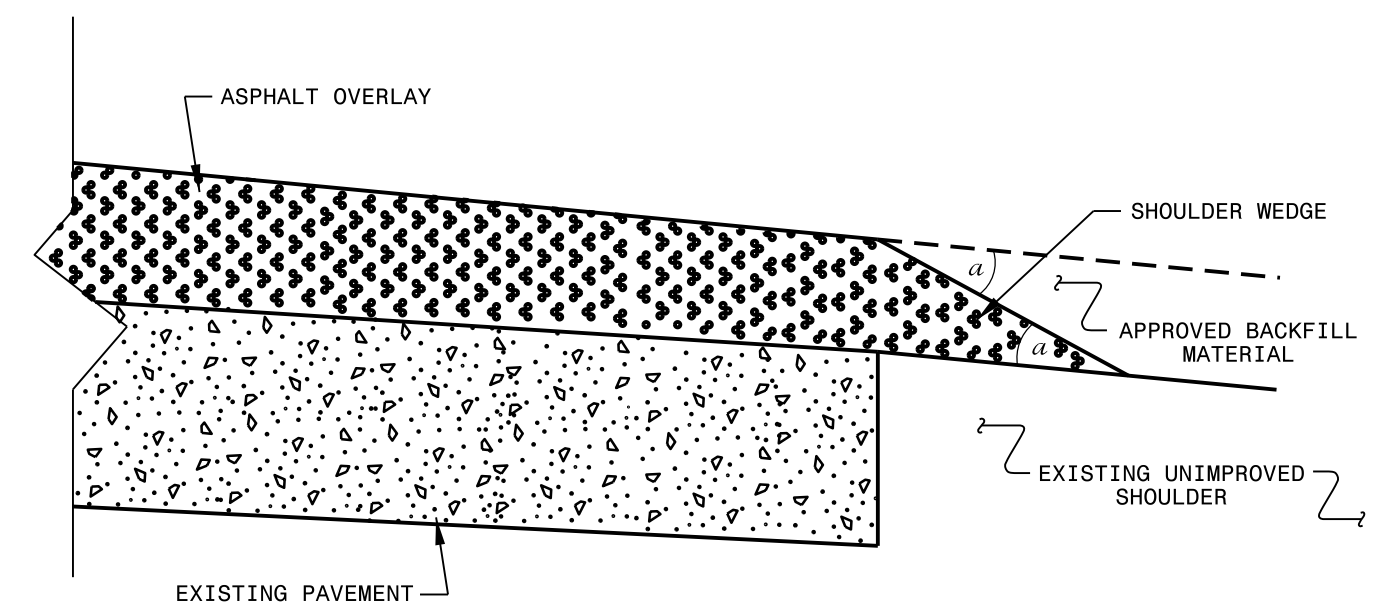
6/2/99

21-FEB-2023 14:09
C:\User\sd\p\rdge\Desk\top\I-604\I-6042\I-6042_dde4_TYP.dgn

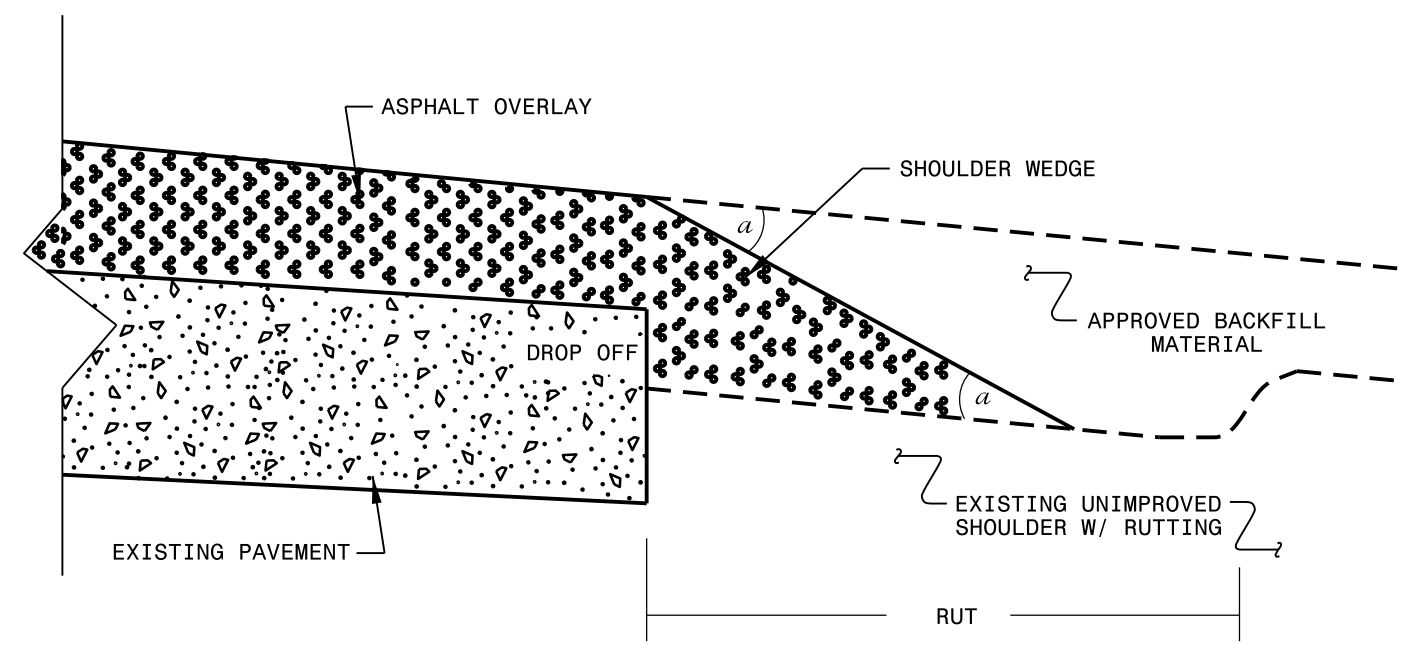
- NOTES:
- 1) DETAIL DOES NOT APPLY TO OGAFc AND ULTRA-THIN BONDED WEARING COURSE.
 - 2) BACKFILL SHOULDER WITH APPROVED MATERIAL.
 - 3) THE SHOULDER WEDGE DEVICE MAY BE DISENGAGED AT PAVED DRIVEWAYS, SIDE STREETS, HIGH SHOULDERS, AND OTHER LOCATIONS NOT FEASIBLE TO CONSTRUCT AS APPROVED BY THE ENGINEER.



SHOULDER WEDGE DETAIL
(Resurfacing Projects w/ Widening or with Existing Paved Shoulder having no dropoffs)



SHOULDER WEDGE DETAIL
(Resurfacing Projects w/ NO Widening)



SHOULDER WEDGE DETAIL
(Resurfacing Adjacent to Rutted Shoulder)

- SHOULDER WEDGE ANGLE = 30°

CONTRACT STANDARDS AND DEVELOPMENT UNIT	
Office 919-707-6950 FAX 919-250-4119	
SHOULDER WEDGE DETAILS	
ORIGINAL BY: T.SPELL	DATE: 7-19-11
MODIFIED BY:	DATE: 2/2/16
CHECKED BY:	DATE:
FILE SPEC.: s:\usr\detatl1s\stand\shoulderwedgedetatl1.dgn	

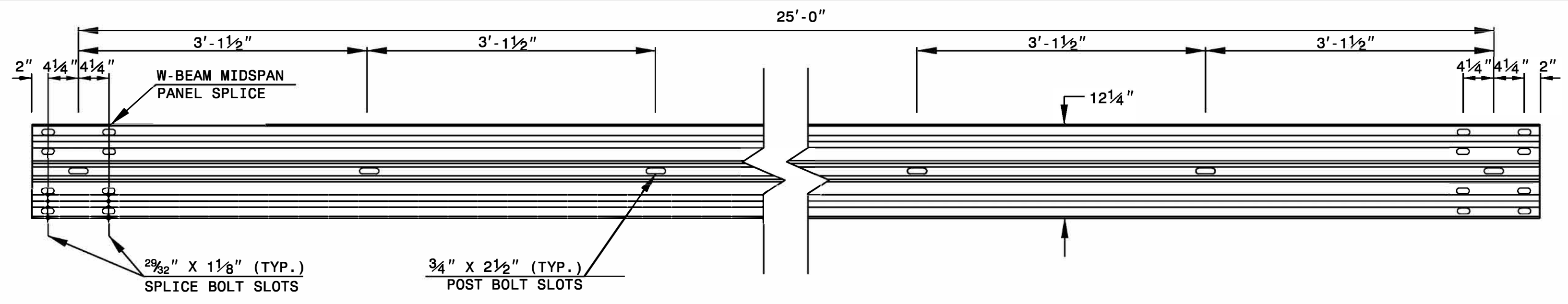
DOCUMENT NOT CONSIDERED FINAL
UNLESS ALL SIGNATURES COMPLETED

\$\$\$\$SYTIME\$\$\$\$
\$\$\$\$USERNAME\$\$\$\$

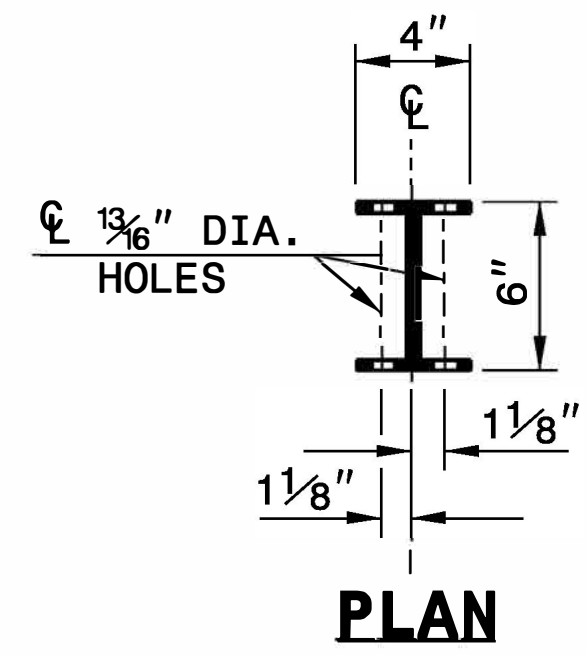
STATE OF
NORTH CAROLINA
DEPT. OF TRANSPORTATION
DIVISION OF HIGHWAYS
RALEIGH, N.C.

ROADWAY DETAIL DRAWING FOR
GUARDRAIL INSTALLATION

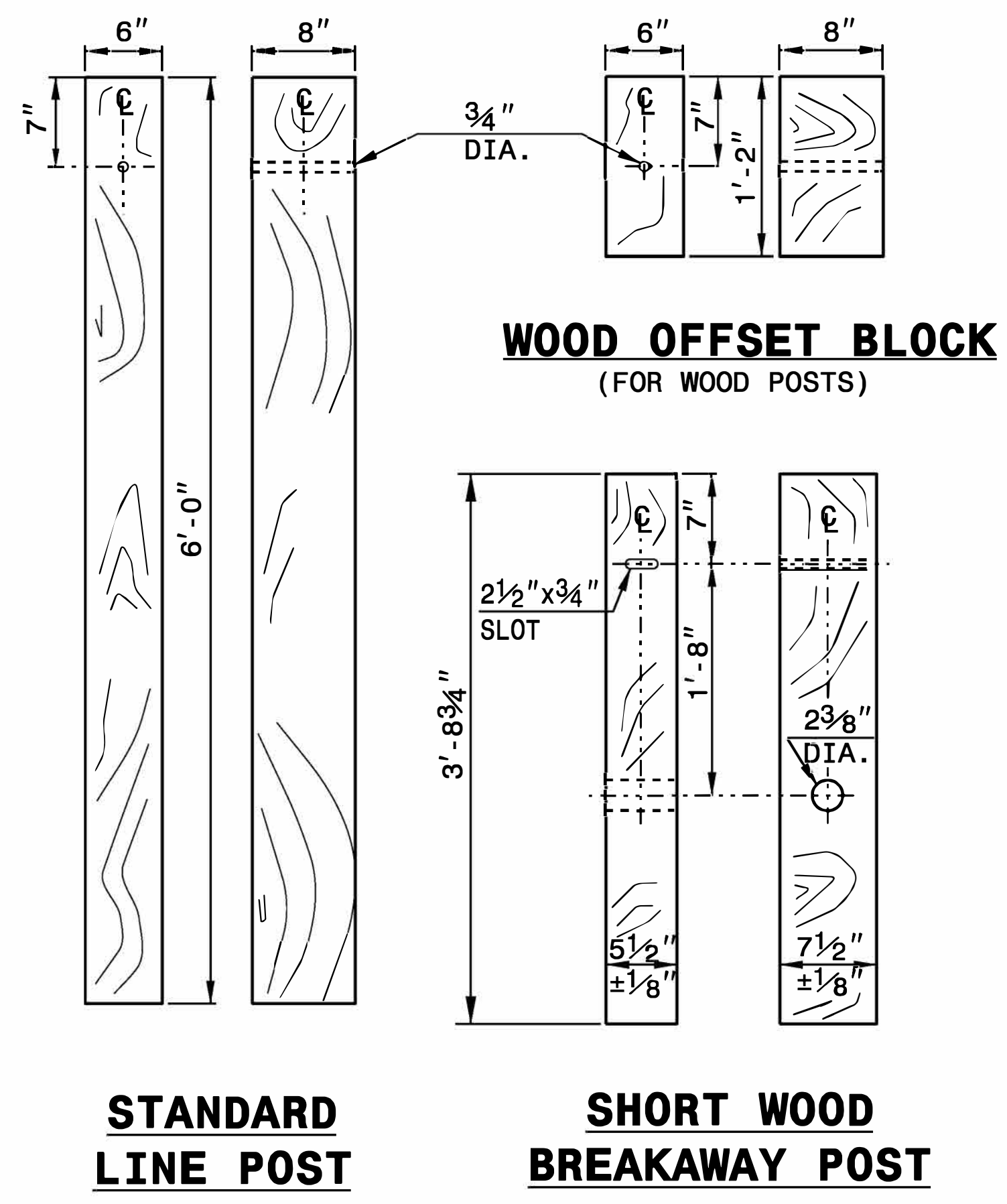
SHEET 6 OF 8
862D02



STANDARD W-BEAM GUARDRAIL



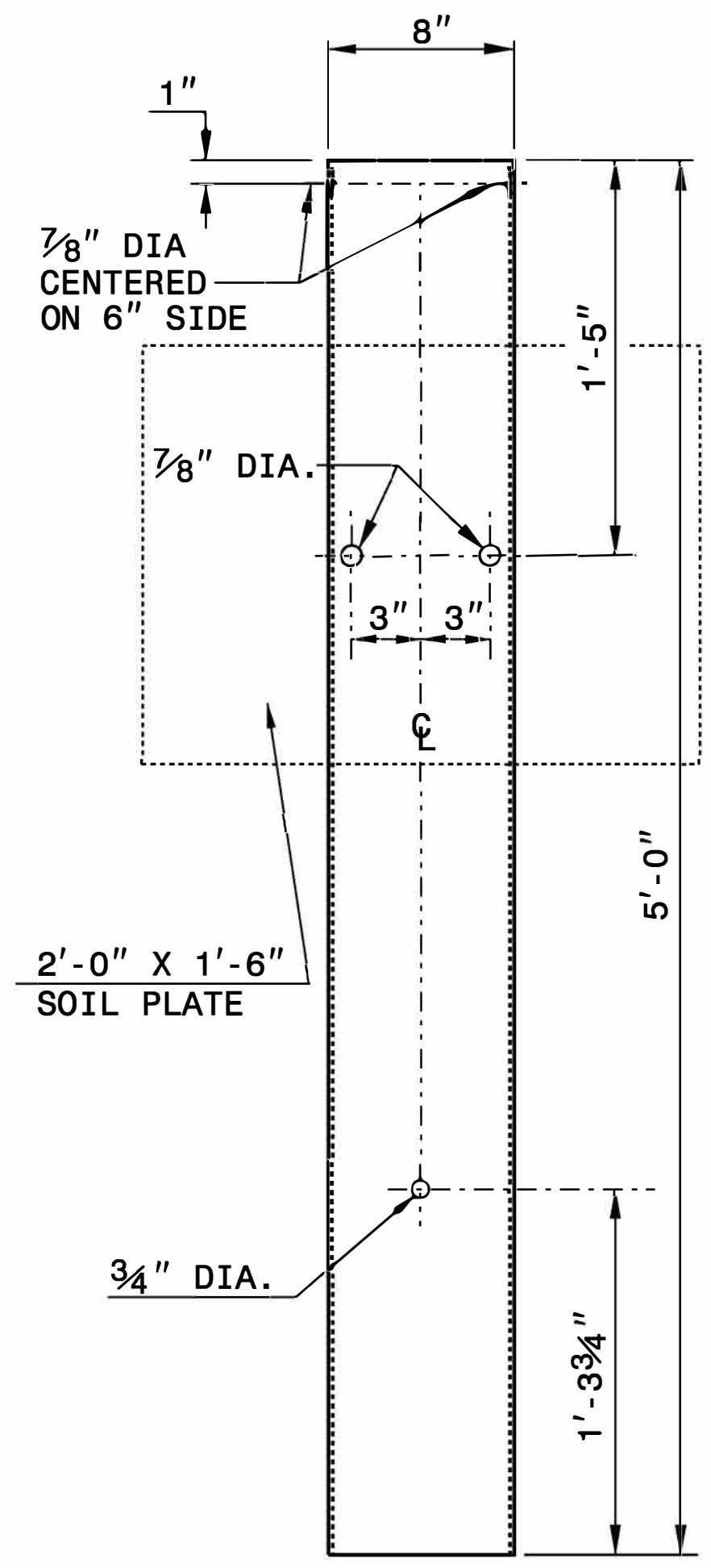
PLAN



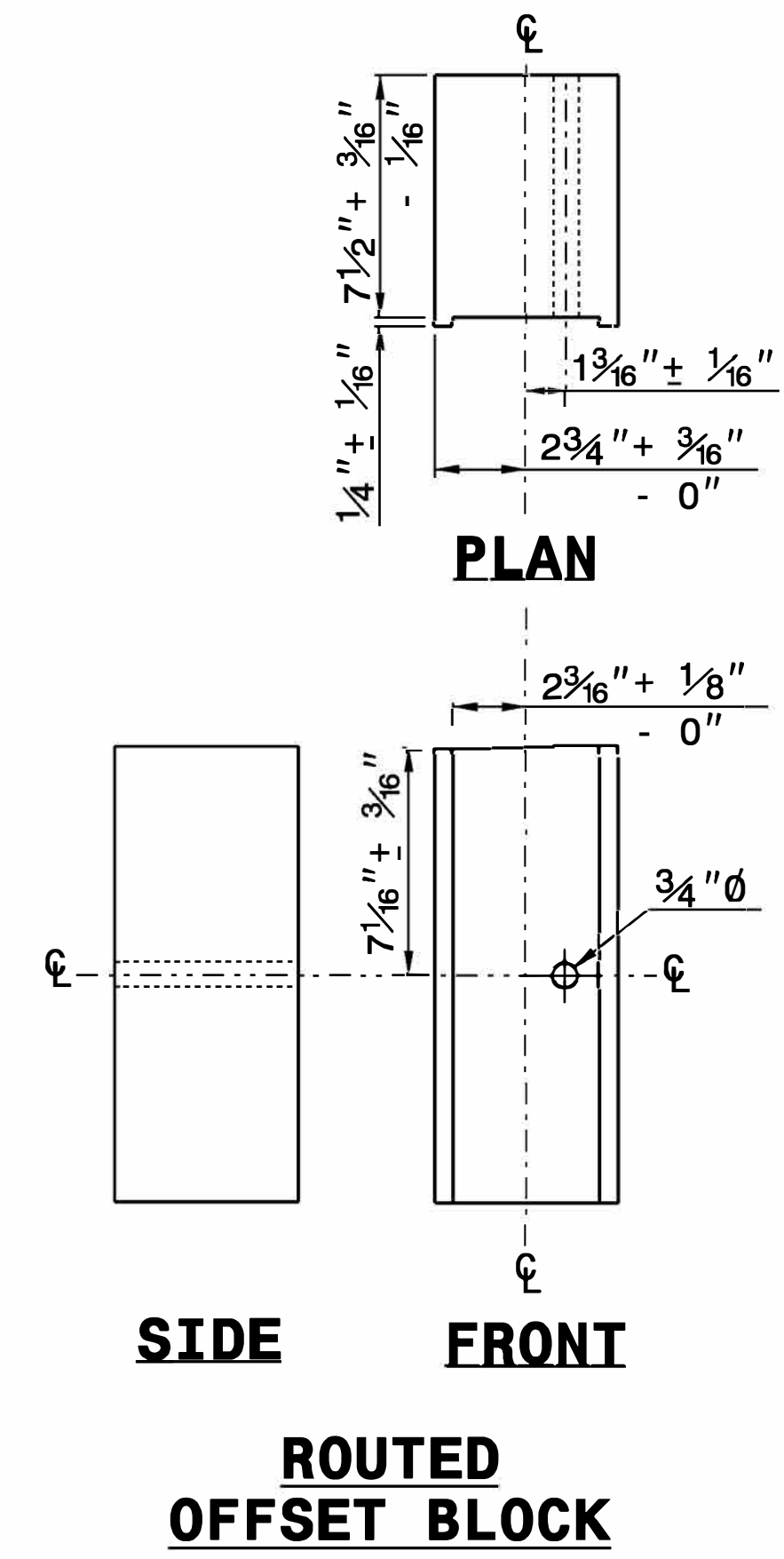
**WOOD OFFSET BLOCK
(FOR WOOD POSTS)**

**STANDARD
LINE POST**

**SHORT WOOD
BREAKAWAY POST**



**STEEL TUBE
TS 6"x8"x0.1875"**

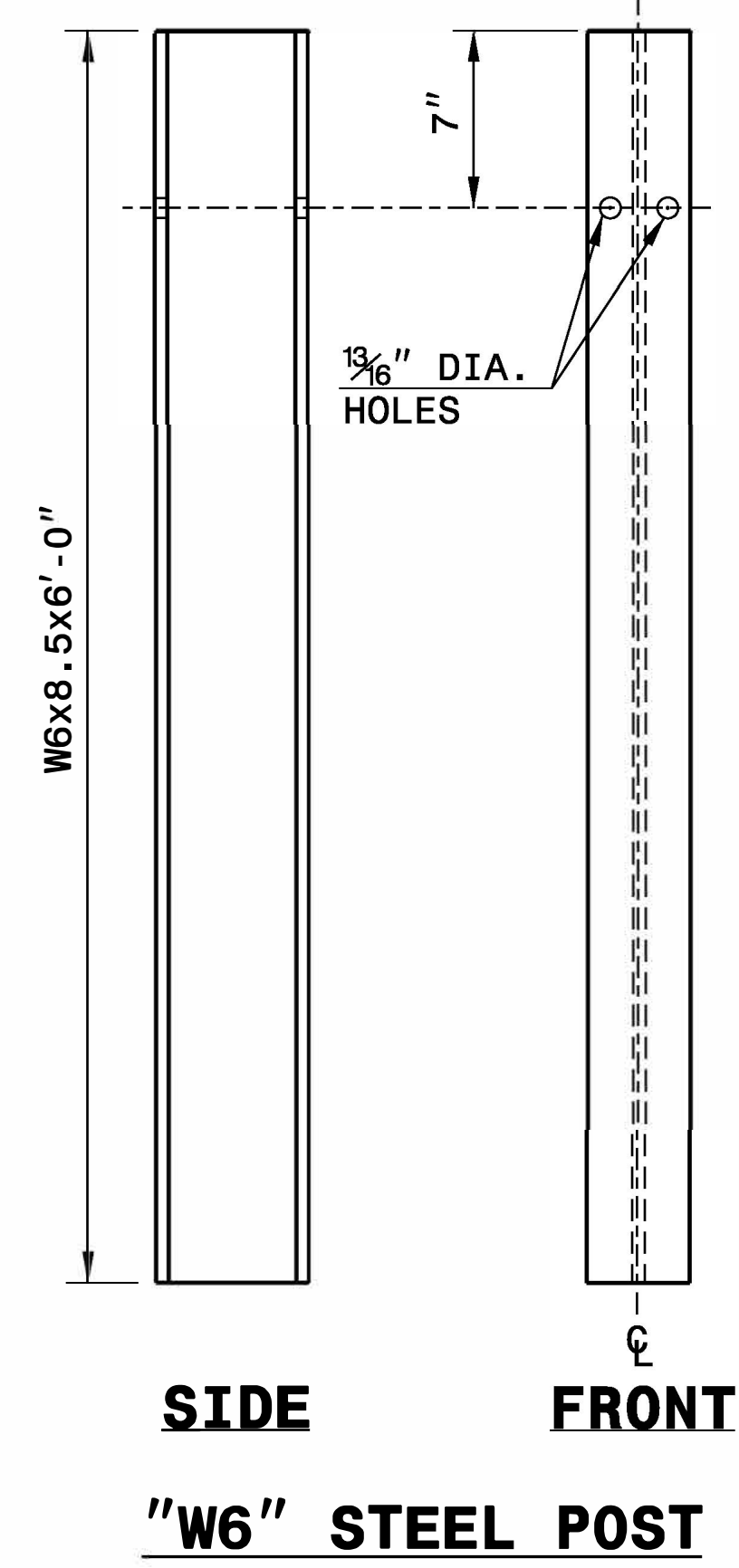


PLAN

SIDE

FRONT

**ROUTED
OFFSET BLOCK**



SIDE

FRONT

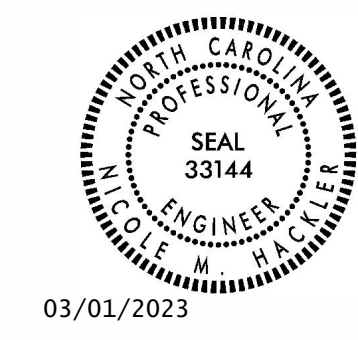
"W6" STEEL POST

SYSTEM PARTS

STATE OF
NORTH CAROLINA
DEPT. OF TRANSPORTATION
DIVISION OF HIGHWAYS
RALEIGH, N.C.

ROADWAY DETAIL DRAWING FOR
GUARDRAIL INSTALLATION

SHEET 6 OF 8
862D02



03/01/2023

DocuSigned by:
Nicole Hecker
5886320418465

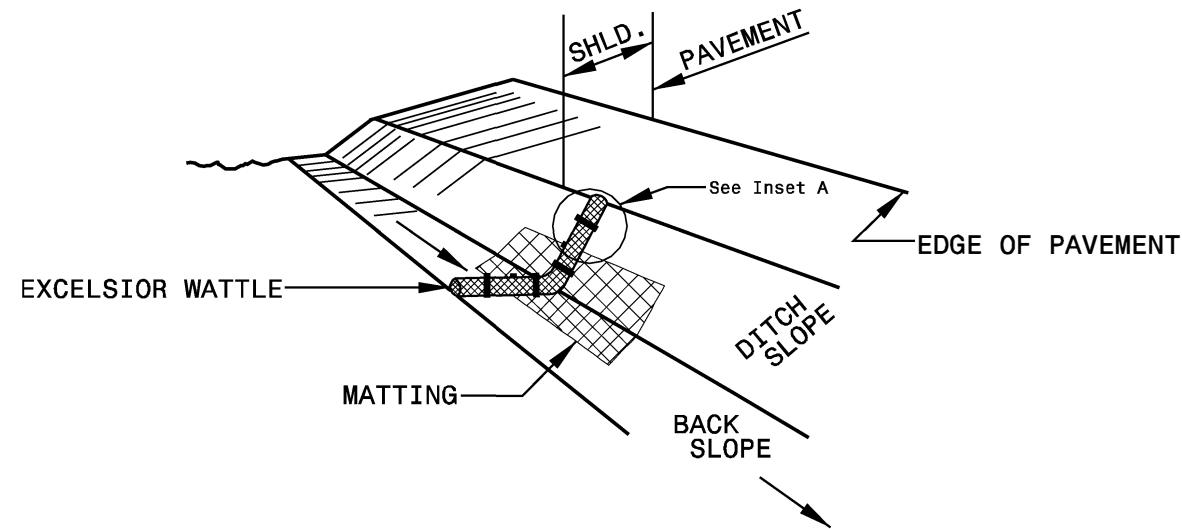
**CONTRACTS STANDARDS
AND DEVELOPMENT UNIT**
Office 919-707-6950 FAX 919-250-4119

SEE TITLE BLOCK

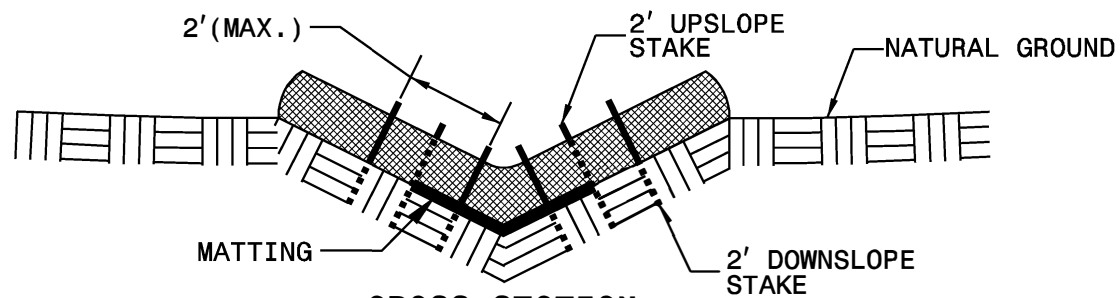
ORIGINAL BY: J. HOWERTON DATE: 3-7-2018
MODIFIED BY: DATE: _____
CHECKED BY: DATE: _____
FILE SPEC.: _____

PROJECT REFERENCE NO. I-6042 479901.3.1	SHEET NO. 7
RWY SHEET NO.	
ROADWAY DESIGN ENGINEER	HYDRAULICS ENGINEER

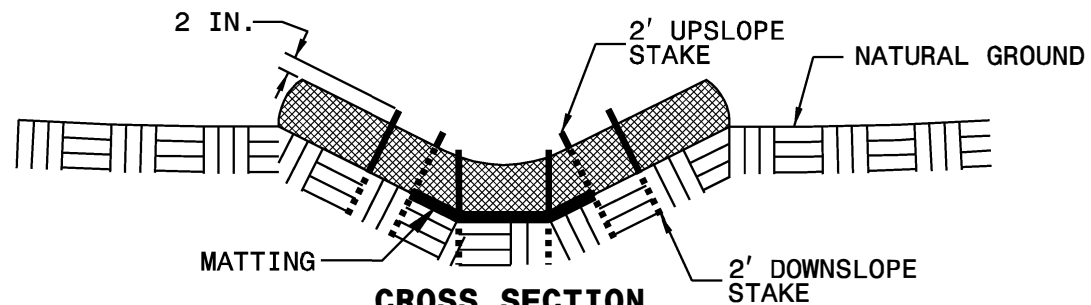
WATTLE DETAIL



ISOMETRIC VIEW



**CROSS SECTION
VEE DITCH**



**CROSS SECTION
TRAPEZOIDAL DITCH**

NOTES:

USE MINIMUM 12 IN. DIAMETER EXCELSIOR WATTLE.

USE 2 FT. WOODEN STAKES WITH A 2 IN. BY 2 IN. NOMINAL CROSS SECTION.

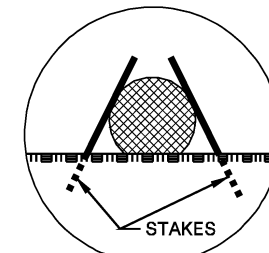
ONLY INSTALL WATTLE(S) TO A HEIGHT IN DITCH SO FLOW WILL NOT WASH AROUND WATTLE AND SCOUR DITCH SLOPES AND AS DIRECTED.

INSTALL A MINIMUM OF 2 UPSLOPE STAKES AND 4 DOWNSLOPE STAKES AT AN ANGLE TO WEDGE WATTLE TO BOTTOM OF DITCH.

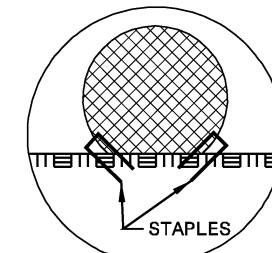
PROVIDE STAPLES MADE OF 0.125 IN. DIAMETER STEEL WIRE FORMED INTO A U SHAPE NOT LESS THAN 12" IN LENGTH.

INSTALL STAPLES APPROXIMATELY EVERY 1 LINEAR FOOT ON BOTH SIDES OF WATTLE AND AT EACH END TO SECURE IT TO THE SOIL.

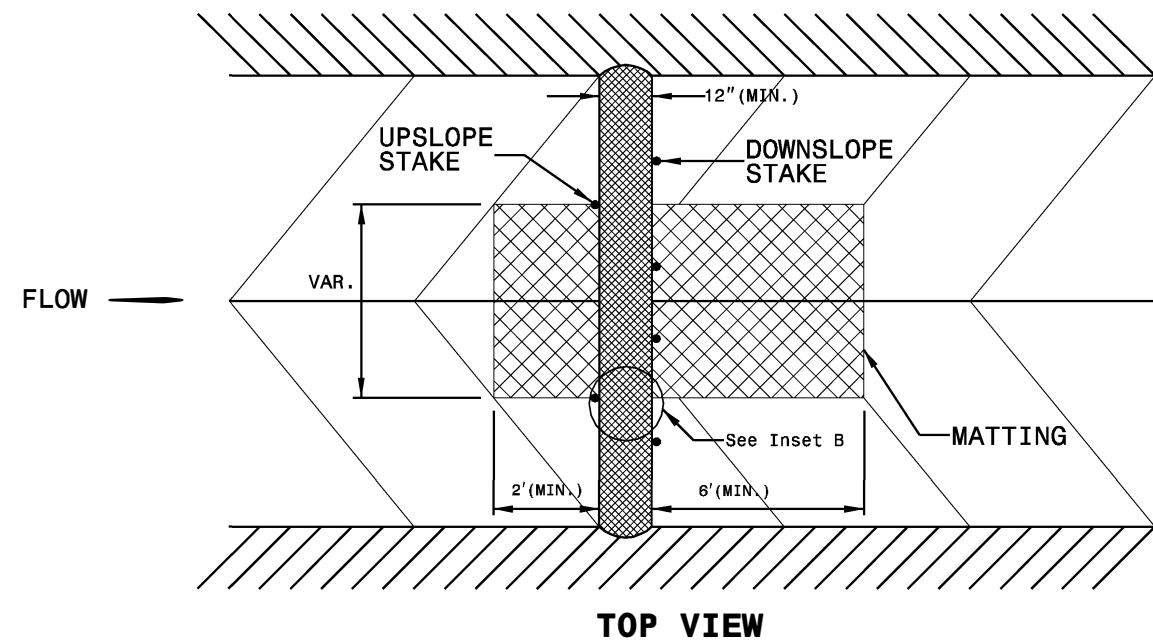
INSTALL MATTING IN ACCORDANCE WITH SECTION 1631 OF THE STANDARD SPECIFICATIONS.



INSET A



INSET B



TOP VIEW

SUMMARY OF QUANTITIES

PROJECT NO.	COUNTY	MAP NO	SEGMENT	ROUTE	DESCRIPTION	TYPICAL SECTION NO.	LANES	LANE TYPE	FINAL SURFACE TESTING REQUIRED	WARM MIX ASPHALT REQUIRED	LENGTH	WIDTH	0106000000-E	0318000000-E	0320000000-E	0448200000-E	0448300000-E	0448400000-E	0995000000-E	1220000000-E	1297000000-E	1297000000-E	1330000000-E	1524200000-E	1577000000-E	1662000000-E	1840000000-E									
													BORROW EXCAVATION	FOUNDATION CONDITIONING MATERIAL, MINOR STRUCTURES	FOUNDATION CONDITIONING GEOTEXTILE	15" RC PIPE CULVERTS, CLASS IV	18" RC PIPE CULVERTS, CLASS IV	24" RC PIPE CULVERTS, CLASS IV	PIPE REMOVAL	INCIDENTAL STONE BASE	MILLING ASPHALT PAVEMENT, 2" DEPTH	MILLING ASPHALT PAVEMENT, 2.75" DEPTH	INCIDENTAL MILLING	ASPHALT CONC SURFACE COURSE, TYPE S9.5D	POLYMER MODIFIED ASPHALT BINDER FOR PLANT MIX	OPEN-GRADED ASPHALT FRICTION COURSE, TYPE FC-1 MODIFIED	MILLED RUMBLE STRIPS (ASPHALT CONCRETE)									
													CY	TON	SY	LF	LF	LF	LF	TON	SY	SY	SY	TON	TON	TON	TON	LF								
I-6042 47991.3.1	EDGECOMBE	3	1	EB EXIT RAMP SR-1523	PHYSICAL GORE TO SR-1523	4	1	MD	NO	NO	0.24	22	20									3470			410	30										
					TOTAL FOR MAP 3						0.24																		410	30						
		4	1	EB ENTRANCE RAMP SR-1523	SR-1523 TO PHYSICAL GORE	4	1	MD	NO	NO	0.23	22	30														3240			390	30					
					TOTAL FOR MAP 4							0.23																			3240		390	30		
		5	1	EB EXIT RAMP SR-1524	PHYSICAL GORE TO SR-1524	4	1	MD	NO	NO	0.22	22															3210			380	30					
					TOTAL FOR MAP 5								0.22																		3210		380	30		
		6	1	EB ENTRANCE RAMP SR-1524	PHYSICAL GORE TO SR-1524	4	1	MD	NO	NO	0.24	22																3430			410	30				
					TOTAL FOR MAP 6								0.24																		3430		410	30		
		7	1	EB EXIT RAMP NC-42	NC-42 TO PHYSICAL GORE	4	1	MD	NO	NO	0.24	22																3470			410	30				
					TOTAL FOR MAP 7								0.24																		3470		410	30		
		8	1	EB ENTRANCE RAMP NC-42	PHYSICAL GORE TO NC-42	4	1	MD	NO	NO	0.24	22																	3470			410	30			
					TOTAL FOR MAP 8								0.24																		3470		410	30		
		9	1	EB EXIT RAMP NC-11	NC-11 TO PHYSICAL GORE	4	1	MD	NO	NO	0.26	22																	3710			440	30			
					TOTAL FOR MAP 9								0.26																		3710		440	30		
		10	1	EB ENTRANCE RAMP NC-11	PHYSICAL GORE TO NC-11	4	1	MD	NO	NO	0.24	22																		3460			410	30		
					TOTAL FOR MAP 10								0.24																			3460		410	30	
		11	1	WB EXIT RAMP NC-11	NC-11 TO PHYSICAL GORE	4	1	MD	NO	NO	0.23	22																		3440			410	30		
					TOTAL FOR MAP 11								0.23																			3440		410	30	
12	1	WB ENTRANCE RAMP NC-11	PHYSICAL GORE TO NC-11	4	1	MD	NO	NO	0.27	22																		3930			470	30				
			TOTAL FOR MAP 12								0.27																			3930		470	30			
13	1	WB EXIT RAMP NC-42	PHYSICAL GORE TO NC-42	4	1	MD	NO	NO	0.21	22																		3100			370	30				
			TOTAL FOR MAP 13								0.21																			3100		370	30			
14	1	WB ENTRANCE RAMP NC-42	NC-42 TO PHYSICAL GORE	4	1	MD	NO	NO	0.25	22																		3600			430	30				
			TOTAL FOR MAP 14								0.25																			3600		430	30			
15	1	WB EXIT RAMP SR-1524	SR-1524 TO PHYSICAL GORE	4	1	MD	NO	NO	0.21	22																		3130			370	30				
			TOTAL FOR MAP 15								0.21																			3130		370	30			
16	1	WB ENTRANCE RAMP SR-1524	PHYSICAL GORE TO SR-1524	4	1	MD	NO	NO	0.26	22																		3670			440	30				
			TOTAL FOR MAP 16								0.26																			3670		440	30			
17	1	WB EXIT RAMP SR-1523	SR-1523 TO PHYSICAL GORE	4	1	MD	NO	NO	0.26	22																		3780			450	30				
			TOTAL FOR MAP 17								0.26																			3780		450	30			
18	1	WB ENTRANCE RAMP SR-1523	PHYSICAL GORE TO SR-1523	4	1	MD	NO	NO	0.25	22																		3540			420	30				
			TOTAL FOR MAP 18								0.25																			3540		420	30			
TOTAL												24.21	190	18	50	104	8	32	144						126380	388290	11930	62210	5020	18430	214270					
SAY																									1000											
GRAND TOTAL													190	18	50	104	8	32	144	1000					126380	388290	11930	62210	5020	18430	214270					
PAY ITEM TOTAL													190	18	50	104	8	32	144	1000					126380	388290	11930	62210	5020	18430	214270					

SUMMARY OF QUANTITIES

PROJECT NO.	COUNTY	MAP NO.	SEGMENT	ROUTE	DESCRIPTION	TYPICAL SECTION NO.	PROJECT NO.										SHEET NO.		TOTAL NO.						
							I-6042 47991.3.1										11		16						
							2253000000-E PIPE COLLARS	2275000000-E FLOWABLE FILL	2286000000-N MASONRY DRAINAGE STRUCTURES	2365000000-N FRAME WITH TWO GRATES, STD 840.22	2473000000-N CONCRETE APRON	3030000000-E STEEL BEAM GUARDRAIL	3150000000-N ADDITIONAL GUARDRAIL POSTS	3287000000-N GUARDRAIL END UNITS, TYPE TL-3	3345000000-E REMOVE & RESET EXISTING GUARDRAIL	3360000000-E REMOVE EXISTING GUARDRAIL	3635000000-E RIP RAP, CLASS II	4400000000-E WORK ZONE SIGNS (STATIONARY)	4420000000-N PORTABLE CHANGEABLE MESSAGE SIGN	4423000000-N WORK ZONE DIGITAL SPEED LIMIT SIGNS	4510000000-N LAW ENFORCEMENT	4600000000-N SINGLE LANE CLOSURE	4600000000-N RAMP/LOOP CLOSURE	4600000000-N RAMP/LOOP TRAFFIC CONTROL	
							CY	CY	EA	EA	EA	LF	EA	EA	LF	LF	TON	SF	EA	EA	HR	EA	EA	EA	
I-6042 47991.3.1 EDGE/COMBE	3	1		EB EXIT RAMP SR-1523	PHYSICAL GORE TO SR-1523	4		20							50		15				48		2	1	
					TOTAL FOR MAP 3			20							50		15					48		2	1
	4	1		EB ENTRANCE RAMP SR-1523	SR-1523 TO PHYSICAL GORE	4		30							50		15				48		2	1	
					TOTAL FOR MAP 4			30							50		15					48		2	1
	5	1		EB EXIT RAMP SR-1524	PHYSICAL GORE TO SR-1524	4																48		2	1
					TOTAL FOR MAP 5																	48		2	1
	6	1		EB ENTRANCE RAMP SR-1524	PHYSICAL GORE TO SR-1524	4																48		2	1
					TOTAL FOR MAP 6																	48		2	1
	7	1		EB EXIT RAMP NC-42	NC-42 TO PHYSICAL GORE	4																48		2	1
					TOTAL FOR MAP 7																	48		2	1
	8	1		EB ENTRANCE RAMP NC-42	PHYSICAL GORE TO NC-42	4																48		2	1
					TOTAL FOR MAP 8																	48		2	1
	9	1		EB EXIT RAMP NC-11	NC-11 TO PHYSICAL GORE	4																48		2	1
					TOTAL FOR MAP 9																	48		2	1
	10	1		EB ENTRANCE RAMP NC-11	PHYSICAL GORE TO NC-11	4												45				48		2	1
					TOTAL FOR MAP 10													45				48		2	1
	11	1		WB EXIT RAMP NC-11	NC-11 TO PHYSICAL GORE	4																48		2	1
					TOTAL FOR MAP 11																	48		2	1
12	1		WB ENTRANCE RAMP NC-11	PHYSICAL GORE TO NC-11	4																48		2	1	
				TOTAL FOR MAP 12																	48		2	1	
13	1		WB EXIT RAMP NC-42	PHYSICAL GORE TO NC-42	4																48		2	1	
				TOTAL FOR MAP 13																	48		2	1	
14	1		WB ENTRANCE RAMP NC-42	NC-42 TO PHYSICAL GORE	4																48		2	1	
				TOTAL FOR MAP 14																	48		2	1	
15	1		WB EXIT RAMP SR-1524	SR-1524 TO PHYSICAL GORE	4																48		2	1	
				TOTAL FOR MAP 15																	48		2	1	
16	1		WB ENTRANCE RAMP SR-1524	PHYSICAL GORE TO SR-1524	4																48		2	1	
				TOTAL FOR MAP 16																	48		2	1	
17	1		WB EXIT RAMP SR-1523	SR-1523 TO PHYSICAL GORE	4																48		2	1	
				TOTAL FOR MAP 17																	48		2	1	
18	1		WB ENTRANCE RAMP SR-1523	PHYSICAL GORE TO SR-1523	4																48		2	1	
				TOTAL FOR MAP 18																	48		2	1	
TOTAL							4,898	190	3	7	4	1550		31	150	3100	161			4224	144	32	16		
SAY												10					464	4	10						
GRAND TOTAL							4,898	190	3	7	4	1550	10	31	150	3100	161	464	4	10	4224	144	32	16	
PAY ITEM TOTAL							4,898	190	3	7	4	1550	10	31	150	3100	161	464	4	10	4224	144	32	16	

SUMMARY OF QUANTITIES

PROJECT NO. SHEET NO. TOTAL NO.

I-6042 47991.3.1 13 16

PROJECT NO.	COUNTY	MAP NO.	SEGMENT	ROUTE	DESCRIPTION	TYPICAL SECTION NO.	4600000000-N	4688000000-E	4688000000-E	4700000000-E	4709000000-E	4725000000-E	4725000000-E	4725000000-E	4725000000-E	4725000000-E	4775000000-E	4775000000-E	4815000000-E	4815000000-E	4825000000-E	4835000000-E						
							CONNECTED LANE CLOSURE DEVICE	THERMOPLASTIC PAVEMENT MARKING LINES (6", 90 MILS) WHITE	THERMOPLASTIC PAVEMENT MARKING LINES (6", 90 MILS) YELLOW	THERMOPLASTIC PAVEMENT MARKING LINES (12", 90 MILS) WHITE	THERMOPLASTIC PAVEMENT MARKING LINES (24", 90 MILS)	THERMOPLASTIC PAVEMENT MARKING SYMBOL (90 MILS) MERGE ARROW	THERMOPLASTIC PAVEMENT MARKING SYMBOL (90 MILS) WRONG-WAY RAMP ARROW	THERMOPLASTIC PAVEMENT MARKING SYMBOL (90 MILS) RIGHT TURN ARROW	THERMOPLASTIC PAVEMENT MARKING SYMBOL (90 MILS) STRAIGHT & LEFT TURN ARROW	COLD APPLIED PLASTIC PAVEMENT MARKING LINES, TYPE 2 (6") WHITE	COLD APPLIED PLASTIC PAVEMENT MARKING LINES, TYPE 2 (6") YELLOW	PAINT PAVEMENT MARKING LINES (6") WHITE	PAINT PAVEMENT MARKING LINES (6") YELLOW	PAINT PAVEMENT MARKING LINES (12") WHITE	PAINT PAVEMENT MARKING LINES (24") WHITE							
I-6042 47991.3.1	EDGE/COMBE	3	1	EB EXIT RAMP SR-1523	PHYSICAL GORE TO SR-1523	4		1390	1270		50				1	1	1			1390	1270	50						
					TOTAL FOR MAP 3			1390	1270	50				1	1	1				1390	1270	50						
		4	1	EB ENTRANCE RAMP SR-1523	SR-1523 TO PHYSICAL GORE	4			1270	1220											1270	1220						
					TOTAL FOR MAP 4			1270	1220														1270	1220				
		5	1	EB EXIT RAMP SR-1524	PHYSICAL GORE TO SR-1524	4			1280	1180		50				1	1	1			1280	1180						
					TOTAL FOR MAP 5			1280	1180	50				1	1	1						1280	1180					
		6	1	EB ENTRANCE RAMP SR-1524	PHYSICAL GORE TO SR-1524	4			1330	1280											1330	1280						
					TOTAL FOR MAP 6			1330	1280														1330	1280				
		7	1	EB EXIT RAMP NC-42	NC-42 TO PHYSICAL GORE	4			1390	1290		50				1	1	1			1390	1290						
					TOTAL FOR MAP 7			1390	1290	50				1	1	1						1390	1290					
		8	1	EB ENTRANCE RAMP NC-42	PHYSICAL GORE TO NC-42	4			1290	1290											1290	1290						
					TOTAL FOR MAP 8			1290	1290														1290	1290				
		9	1	EB EXIT RAMP NC-11	NC-11 TO PHYSICAL GORE	4			1490	1370		60				1	1	1			1490	1370						
					TOTAL FOR MAP 9			1490	1370	60				1	1	1						1490	1370					
		10	1	EB ENTRANCE RAMP NC-11	PHYSICAL GORE TO NC-11	4			1290	1290											1290	1290						
					TOTAL FOR MAP 10			1290	1290														1290	1290				
		11	1	WB EXIT RAMP NC-11	NC-11 TO PHYSICAL GORE	4			1350	1230		60				1	1	1			1350	1230						
					TOTAL FOR MAP 11			1350	1230	60				1	1	1						1350	1230					
12	1	WB ENTRANCE RAMP NC-11	PHYSICAL GORE TO NC-11	4			1490	1410											1490	1410								
			TOTAL FOR MAP 12			1490	1410														1490	1410						
13	1	WB EXIT RAMP NC-42	PHYSICAL GORE TO NC-42	4			1260	1130		50				1	1	1			1260	1130								
			TOTAL FOR MAP 13			1260	1130	50				1	1	1						1260	1130							
14	1	WB ENTRANCE RAMP NC-42	NC-42 TO PHYSICAL GORE	4			1390	1340											1390	1340								
			TOTAL FOR MAP 14			1390	1340														1390	1340						
15	1	WB EXIT RAMP SR-1524	SR-1524 TO PHYSICAL GORE	4			1250	1120		60				1	1	1			1250	1120								
			TOTAL FOR MAP 15			1250	1120	60				1	1	1						1250	1120							
16	1	WB ENTRANCE RAMP SR-1524	PHYSICAL GORE TO SR-1524	4			1430	1350											1430	1350								
			TOTAL FOR MAP 16			1430	1350														1430	1350						
17	1	WB EXIT RAMP SR-1523	SR-1523 TO PHYSICAL GORE	4			1390	1390		50				1	1	1			1390	1390								
			TOTAL FOR MAP 17			1390	1390	50				1	1	1						1390	1390							
18	1	WB ENTRANCE RAMP SR-1523	PHYSICAL GORE TO SR-1523	4			1390	1320											1390	1320								
			TOTAL FOR MAP 18			1390	1320														1390	1320						

TOTAL								158260	127750	13500	430	24	8	8	8	630	500	158260	127750	13500	430				
SAY							4																		
GRAND TOTAL							4	158260	127750	13500	430	24	8	8	8	630	500	158260	127750	13500	430				
PAY ITEM TOTAL							4	286010		13500	430	48				1130		286010		13500	430				

SUMMARY OF QUANTITIES

PROJECT NO. SHEET NO. TOTAL NO.

I-6042 47991.3.1 14 16

PROJECT NO	COUNTY	MAP NO	SEGMENT	ROUTE	DESCRIPTION	TYPICAL SECTION NO.	4845000000-N	4845000000-N	4845000000-N	4845000000-N	4855000000-E	4905100000-N	6000000000-E	6012000000-E	6029000000-E	6042000000-E	6071010000-E	6084000000-E	6117500000-N	6117000000-N									
							PAINT PAVEMENT MARKING SYMBOL MERGE ARROW	PAINT PAVEMENT MARKING SYMBOL WRONG-WAY RAMP ARROW	PAINT PAVEMENT MARKING SYMBOL RIGHT TURN ARROW	PAINT PAVEMENT MARKING SYMBOL STRAIGHT & LEFT TURN ARROW	REMOVAL OF PAVEMENT MARKING LINES (6")	NON-CAST IRON SNOWPLOWABLE PAVEMENT MARKER (CRYSTAL/RED)	TEMPORARY SILT FENCE	SEDIMENT CONTROL STONE	SAFETY FENCE	1/4" HARDWARE CLOTH	WATTLE	SEEDING & MULCHING	CONCRETE WASHOUT STRUCTURE	RESPONSE FOR EROSION CONTROL									
I-6042 47991.3.1	EDGECOMBE	1		US-64 EBL	END NC-33 RAMP (I-6041) TO BEGIN BRIDGE OVER RR & US-64A	1					30																		
					BEGIN BRIDGE OVER RR & US-64A TO END BRIDGE OVER RR & US-64A	BRIDGE				570																			
					END BRIDGE OVER RR & US-64A TO BEGIN RAMP FOR SR-1523	1					10																		
					BEGIN RAMP FOR SR-1523 TO THEORETICAL GORE	2					10																		
					THEORETICAL GORE TO PHYSICAL GORE	3					35			5		40	40	0.1											
					PHYSICAL GORE TO PHYSICAL GORE	1					35																		
					PHYSICAL GORE TO THEORETICAL GORE	3					50			5		40	40	0.1											
					THEORETICAL GORE TO END RAMP FOR SR-1523	2	3				30																		
					END RAMP FOR SR-1523 TO BEGIN RAMP FOR SR-1524	1					115																		
					BEGIN RAMP FOR SR-1524 TO THEORETICAL GORE	2					10																		
					THEORETICAL GORE TO PHYSICAL GORE	3					55																		
					PHYSICAL GORE TO PHYSICAL GORE	1					30																		
					PHYSICAL GORE TO THEORETICAL GORE	2					10																		
					THEORETICAL GORE TO END RAMP FOR SR-1524	3	3				125																		
					END RAMP FOR SR-1524 TO BEGIN RAMP FOR NC-42	1					155				5		40	40	0.1										
					BEGIN RAMP FOR NC-42 TO THEORETICAL GORE	2					10				5		40	40	0.1										
					THEORETICAL GORE TO PHYSICAL GORE	3					55																		
					PHYSICAL GORE TO PHYSICAL GORE	1					35																		
					PHYSICAL GORE TO THEORETICAL GORE	3					35																		
					THEORETICAL GORE TO END RAMP FOR NC-42	2	3				30																		
					END RAMP FOR NC-42 TO BEGIN RAMP FOR NC-11	1					75				15		120	120	0.3										
					BEGIN RAMP FOR NC-11 TO THEORETICAL GORE	2					10																		
					THEORETICAL GORE TO PHYSICAL GORE	3					45																		
					PHYSICAL GORE TO PHYSICAL GORE	1					35																		
					PHYSICAL GORE TO THEORETICAL GORE	3					30																		
					THEORETICAL GORE TO END RAMP FOR NC-11	2	3				25				5		40	40	0.1										
					END RAMP FOR NC-11 TO COUNTY LINE	1					70				5		40	40	0.1										
TOTAL FOR MAP 1							12				570	1155	45		360	360	0.9												
I-6042 47991.3.1	EDGECOMBE	2		US-64 WBL	COUNTY LINE TO BEGIN RAMP FOR NC-11	1					75	5		40	40	0.1													
					BEGIN RAMP FOR NC-11 TO THEORETICAL GORE	2				10																			
					THEORETICAL GORE TO PHYSICAL GORE	3				50			5		40	40	0.1												
					PHYSICAL GORE TO PHYSICAL GORE	1				35																			
					PHYSICAL GORE TO THEORETICAL GORE	3				35																			
					THEORETICAL GORE TO END RAMP FOR NC-11	2	3			25																			
					END RAMP FOR NC-11 TO BEGIN RAMP FOR NC-42	1				75				5		40	40	0.1											
					BEGIN RAMP FOR NC-42 TO THEORETICAL GORE	2				10																			
					THEORETICAL GORE TO PHYSICAL GORE	3				50																			
					PHYSICAL GORE TO PHYSICAL GORE	1				35																			
					PHYSICAL GORE TO THEORETICAL GORE	3				40																			
					THEORETICAL GORE TO END RAMP FOR NC-42	2	3			25																			
					END RAMP FOR NC-42 TO BEGIN RAMP FOR SR-1524	1				155				10		80	80	0.2											
					BEGIN RAMP FOR SR-1524 TO THEORETICAL GORE	2				10																			
THEORETICAL GORE TO PHYSICAL GORE	3				65																								
PHYSICAL GORE TO PHYSICAL GORE	1				35																								
PHYSICAL GORE TO THEORETICAL GORE	3				35																								
THEORETICAL GORE TO END RAMP FOR SR-1524	2	3			30																								
END RAMP FOR SR-1524 TO BEGIN RAMP FOR SR-1523	1				110				5		40	40	0.1																
BEGIN RAMP FOR SR-1523 TO THEORETICAL GORE	2				10																								
THEORETICAL GORE TO PHYSICAL GORE	3				60																								
PHYSICAL GORE TO PHYSICAL GORE	1				35																								
PHYSICAL GORE TO THEORETICAL GORE	3				35																								
THEORETICAL GORE TO BEGIN BRIDGE OVER RR & US-64A	2	3			30																								
BEGIN BRIDGE OVER RR & US-64A TO END BRIDGE OVER RR & US-64A	BRIDGE				550																								
END BRIDGE OVER RR & US-64A TO BEGIN NC-33 RAMP (1-6061)	1				35																								
TOTAL FOR MAP 2							12			550	1110	30		240	240	0.6													

SUMMARY OF QUANTITIES

PROJECT NO. SHEET NO. TOTAL NO.

I-6042 47991.3.1 15 16

PROJECT NO	COUNTY	MAP NO	SEGMENT	ROUTE	DESCRIPTION	TYPICAL SECTION NO.	4845000000-N	4845000000-N	4845000000-N	4845000000-N	4855000000-E	4905100000-N	6000000000-E	6012000000-E	6029000000-E	6042000000-E	6071010000-E	6084000000-E	6117500000-N	6117000000-N	RESPONSE FOR EROSION CONTROL						
							PAINT PAVEMENT MARKING SYMBOL MERGE ARROW	PAINT PAVEMENT MARKING SYMBOL WRONG-WAY RAMP ARROW	PAINT PAVEMENT MARKING SYMBOL RIGHT TURN ARROW	PAINT PAVEMENT MARKING SYMBOL STRAIGHT & LEFT TURN ARROW	REMOVAL OF PAVEMENT MARKING LINES (6")	NON-CAST IRON SNOWPLOWABLE PAVEMENT MARKER (CRYSTAL/RED)	TEMPORARY SILT FENCE	SEDIMENT CONTROL STONE	SAFETY FENCE	1/4" HARDWARE CLOTH	WATTLE	SEEDING & MULCHING	CONCRETE WASHOUT STRUCTURE	EA							
I-6042 47991.3.1	EDGEcombe	3	1	EB EXIT RAMP SR-1523	PHYSICAL GORE TO SR-1523	4	EA	EA	EA	EA	LF	EA	LF	TON	LF	LF	LF	ACR	EA	EA							
					TOTAL FOR MAP 3																						
		4	1	EB ENTRANCE RAMP SR-1523	SR-1523 TO PHYSICAL GORE	4										5		40	40	0.1							
					TOTAL FOR MAP 4													5		40	40	0.1					
		5	1	EB EXIT RAMP SR-1524	PHYSICAL GORE TO SR-1524	4							15														
					TOTAL FOR MAP 5										15												
		6	1	EB ENTRANCE RAMP SR-1524	PHYSICAL GORE TO SR-1524	4																					
					TOTAL FOR MAP 6																						
		7	1	EB EXIT RAMP NC-42	NC-42 TO PHYSICAL GORE	4							15														
					TOTAL FOR MAP 7										15												
		8	1	EB ENTRANCE RAMP NC-42	PHYSICAL GORE TO NC-42	4																					
					TOTAL FOR MAP 8																						
		9	1	EB EXIT RAMP NC-11	NC-11 TO PHYSICAL GORE	4							15														
					TOTAL FOR MAP 9										15												
		10	1	EB ENTRANCE RAMP NC-11	PHYSICAL GORE TO NC-11	4																					
					TOTAL FOR MAP 10																						
		11	1	WB EXIT RAMP NC-11	NC-11 TO PHYSICAL GORE	4							15														
					TOTAL FOR MAP 11										15												
12	1	WB ENTRANCE RAMP NC-11	PHYSICAL GORE TO NC-11	4																							
			TOTAL FOR MAP 12																								
13	1	WB EXIT RAMP NC-42	PHYSICAL GORE TO NC-42	4							15																
			TOTAL FOR MAP 13										15														
14	1	WB ENTRANCE RAMP NC-42	NC-42 TO PHYSICAL GORE	4																							
			TOTAL FOR MAP 14																								
15	1	WB EXIT RAMP SR-1524	SR-1524 TO PHYSICAL GORE	4							15																
			TOTAL FOR MAP 15										15														
16	1	WB ENTRANCE RAMP SR-1524	PHYSICAL GORE TO SR-1524	4																							
			TOTAL FOR MAP 16																								
17	1	WB EXIT RAMP SR-1523	SR-1523 TO PHYSICAL GORE	4							15																
			TOTAL FOR MAP 17										15														
18	1	WB ENTRANCE RAMP SR-1523	PHYSICAL GORE TO SR-1523	4																							
			TOTAL FOR MAP 18																								
TOTAL							24	8	8	8	1120	2385	85	200	200	680	680	1.7	5	5							
SAY												200		200					5	5							
GRAND TOTAL							24	8	8	8	1120	2385	200	85	200	680	680	1.7	5	5							
PAY ITEM TOTAL							48				1120	2385	200	85	200	680	680	1.7	5	5							

LIST OF DRAINAGE SITES

Table with 7 columns: PROJECT NO., COUNTY, SITE, ROUTE, MAP-SEGMENT, LONG, LAT, DESCRIPTION. Contains data for sites 12-71.

Table with 7 columns: PROJECT NO., COUNTY, SITE, ROUTE, MAP-SEGMENT, LONG, LAT, DESCRIPTION. Contains empty rows for sites 72-99.