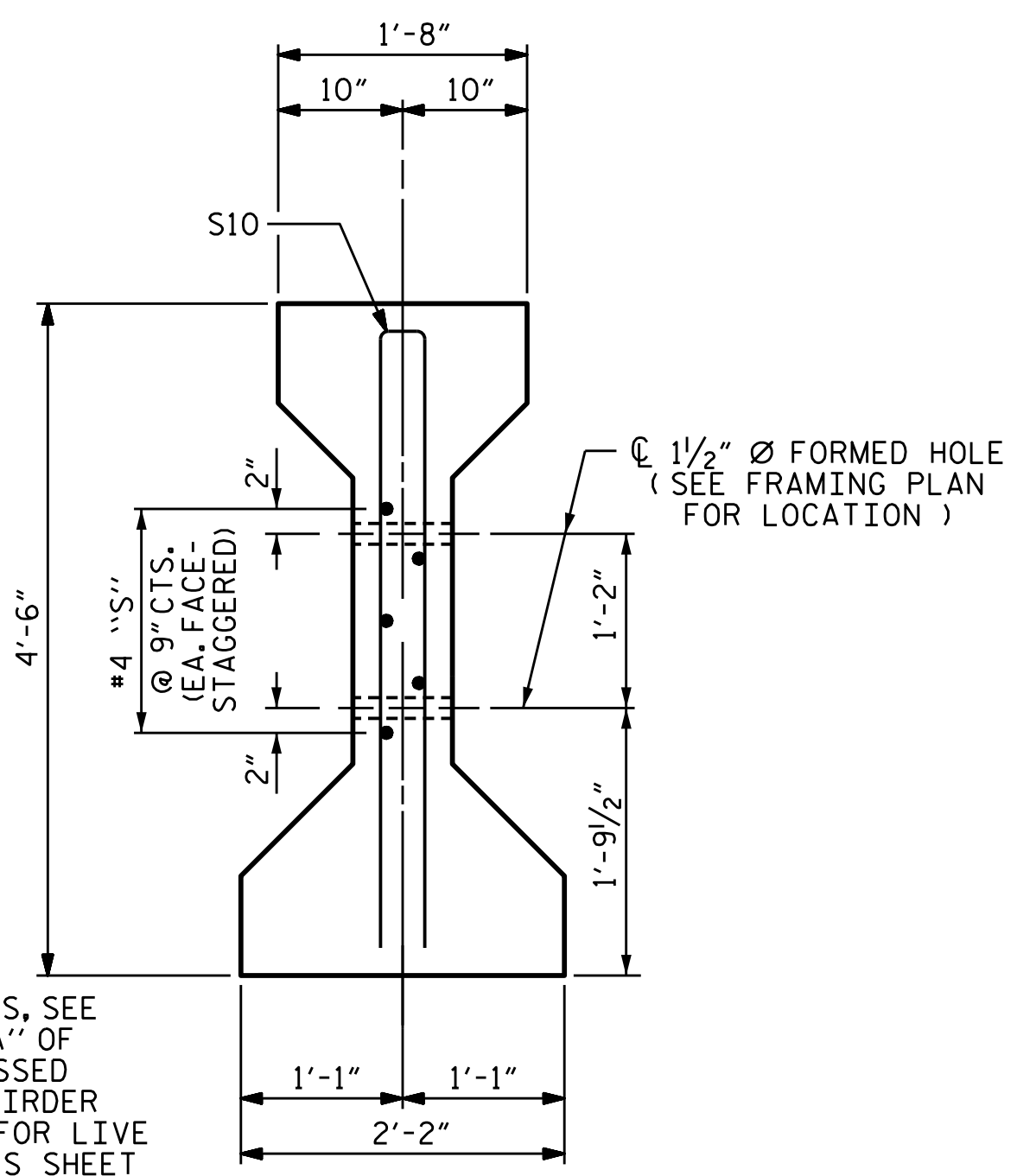
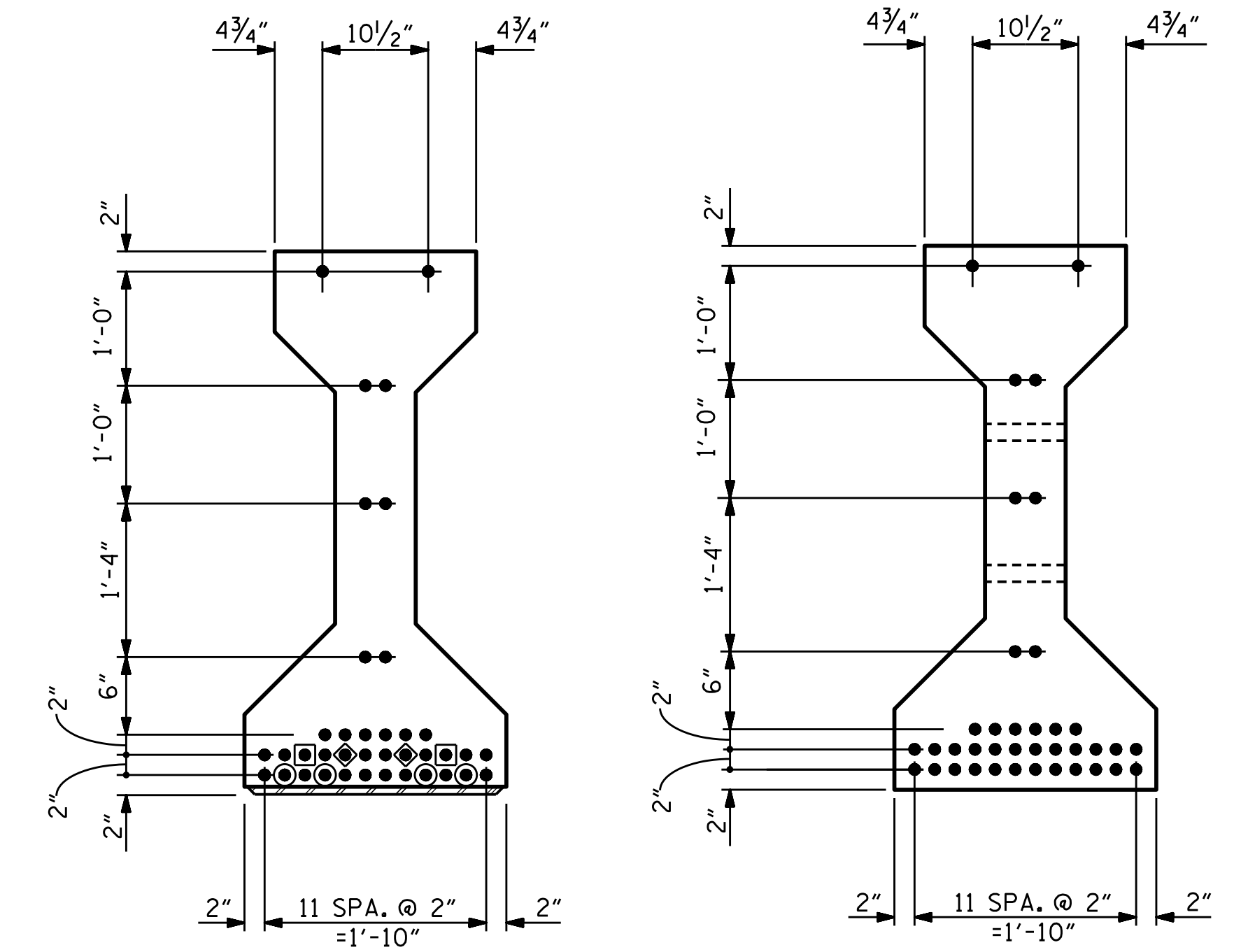


SECTION A-A

SECTION B-B



SECTION C-C
(S1 BARS NOT SHOWN)

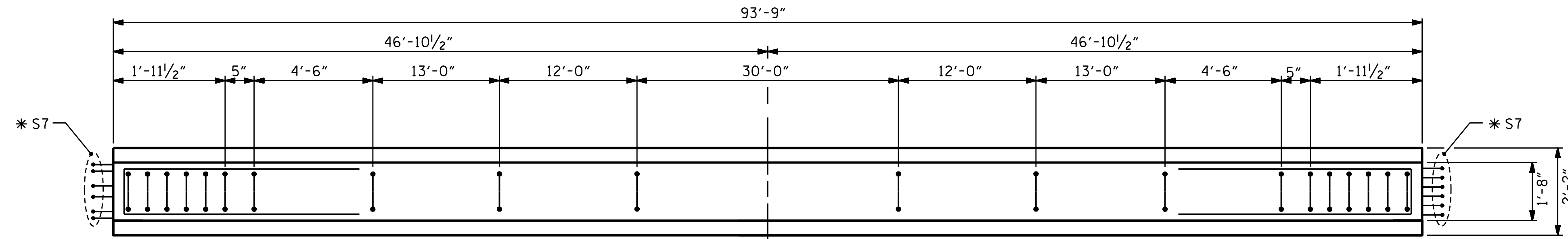


AT END OF GIRDER

AT C OF GIRDER

0.6" Ø LOW RELAXATION STRAND LAYOUT

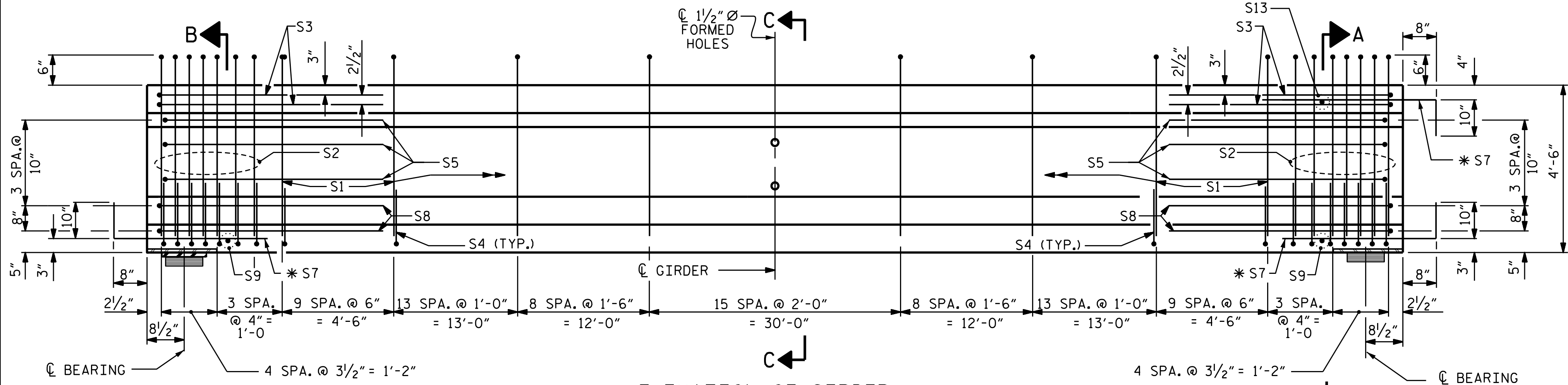
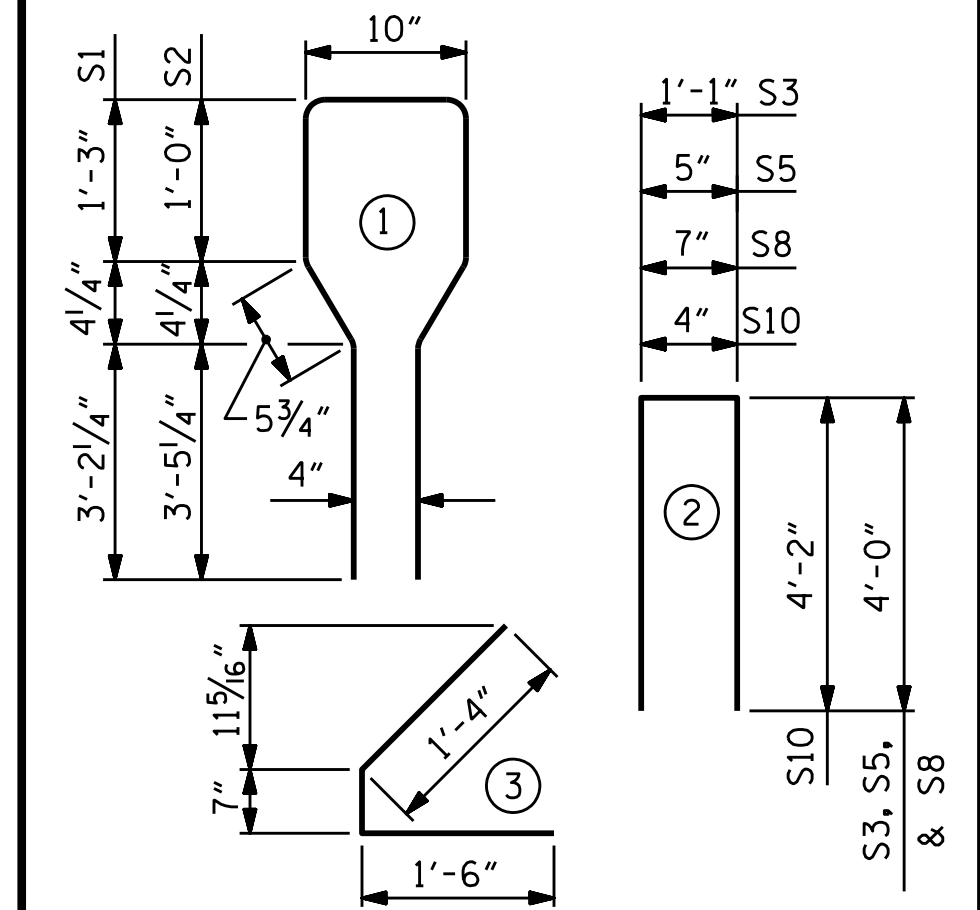
* FOR S7 BARS, SEE
DETAIL "A" OF
PRESTRESSED
CONCRETE GIRDER
CONTINUOUS FOR LIVE
LOAD DETAILS SHEET



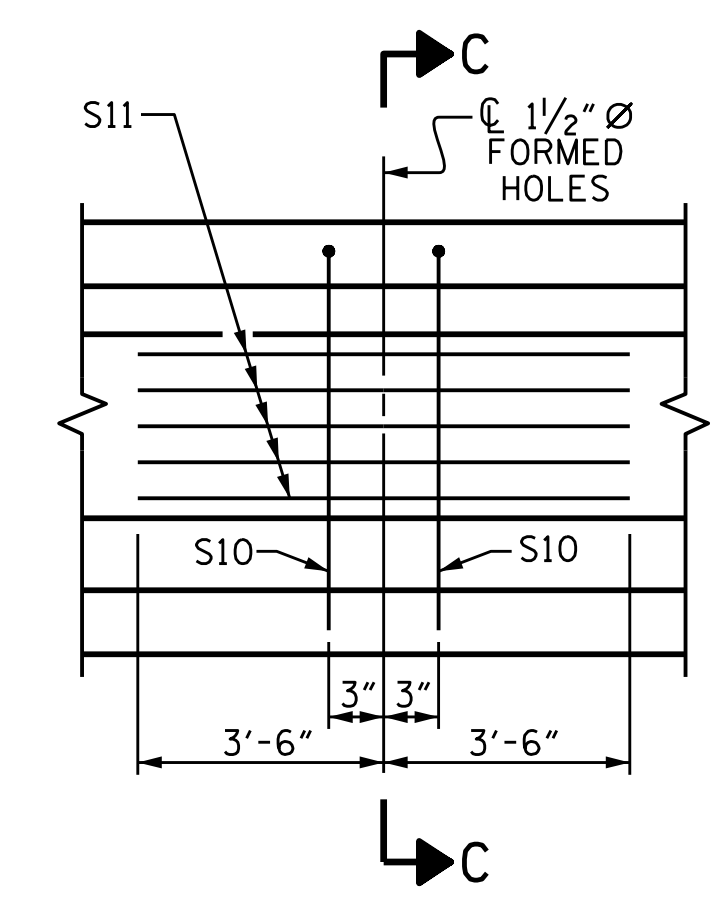
PLAN OF GIRDER

- BOND SHALL BE BROKEN ON THESE STRANDS FOR A DISTANCE OF 4'-0" FROM END OF GIRDER. SEE STANDARD SPECIFICATIONS, ARTICLE 1078-7.
- BOND SHALL BE BROKEN ON THESE STRANDS FOR A DISTANCE OF 10'-0" FROM END OF GIRDER. SEE STANDARD SPECIFICATIONS, ARTICLE 1078-7.
- ◆ BOND SHALL BE BROKEN ON THESE STRANDS FOR A DISTANCE OF 18'-0" FROM END OF GIRDER. SEE STANDARD SPECIFICATIONS, ARTICLE 1078-7.

DEBONDING LEGEND



ELEVATION OF GIRDER
(SEE PARTIAL ELEVATION FOR ADDITIONAL "S" BARS)



PARTIAL ELEVATION
SHOWING INTERMEDIATE DIAPHRAGM
REINFORCING STEEL FOR ALL GIRDERS

QUANTITIES FOR ONE GIRDER			
REINFORCING STEEL	6500 PSI CONCRETE	0.6" Ø L. R. STRANDS	
LB.	C.Y.	No.	
1114	19.0	38	

GIRDERS REQUIRED		
NUMBER	LENGTH	TOTAL LENGTH
4	93'-9"	375'-0"

PROJECT NO. R-2561CA
COLUMBUS COUNTY
 STATION: 70+34.00 -L-

SHEET 3 OF 4

DocuSigned by:

 DB3C8E45B06D499
 NORTH CAROLINA PROFESSIONAL ENGINEER SEAL 14114
 ROBERT C. LARSON

DESIGN ENGINEER OF RECORD:	DATE:	8/15/2022
ASSEMBLED BY: A. K. ALLANKI	DATE:	08/22/19
CHECKED BY: R. C. LARSON	DATE:	04/23/20
DRAWN BY: ELR 8/91	REV. 10/1/11	MAA/GM
CHECKED BY: GRP 8/91	REV. 1/15	MAA/TMG
	REV. 12/17	MAA/THC

DOCUMENT NOT CONSIDERED FINAL
 UNLESS ALL SIGNATURES COMPLETED

ENGINEERS & PLANNERS & SCIENTISTS & CONSTRUCTION MANAGERS
KCI Associates
 of North Carolina, P.A.
 4505 Falls of House Road, Suite 400 Raleigh, NC 27609-6270 Phone: (919) 785-5241

STATE OF NORTH CAROLINA
 DEPARTMENT OF TRANSPORTATION
 RALEIGH
 STANDARD
 AASHTO TYPE IV
 PRESTRESSED CONCRETE GIRDER
 CONTINUOUS FOR LIVE LOAD
 SPAN C
 LEFT LANE

REVISIONS					
NO.	BY:	DATE:	NO.	BY:	DATE:
1			3		
2			4		

SHEET NO.
 S3-12
 TOTAL SHEETS
 30

\$FILEL\$ \$DATE\$ \$TIME\$ \$USER\$ \$PENTBL\$ \$PLTDVRS\$
 KCI PROJECT NO. 241704391.04