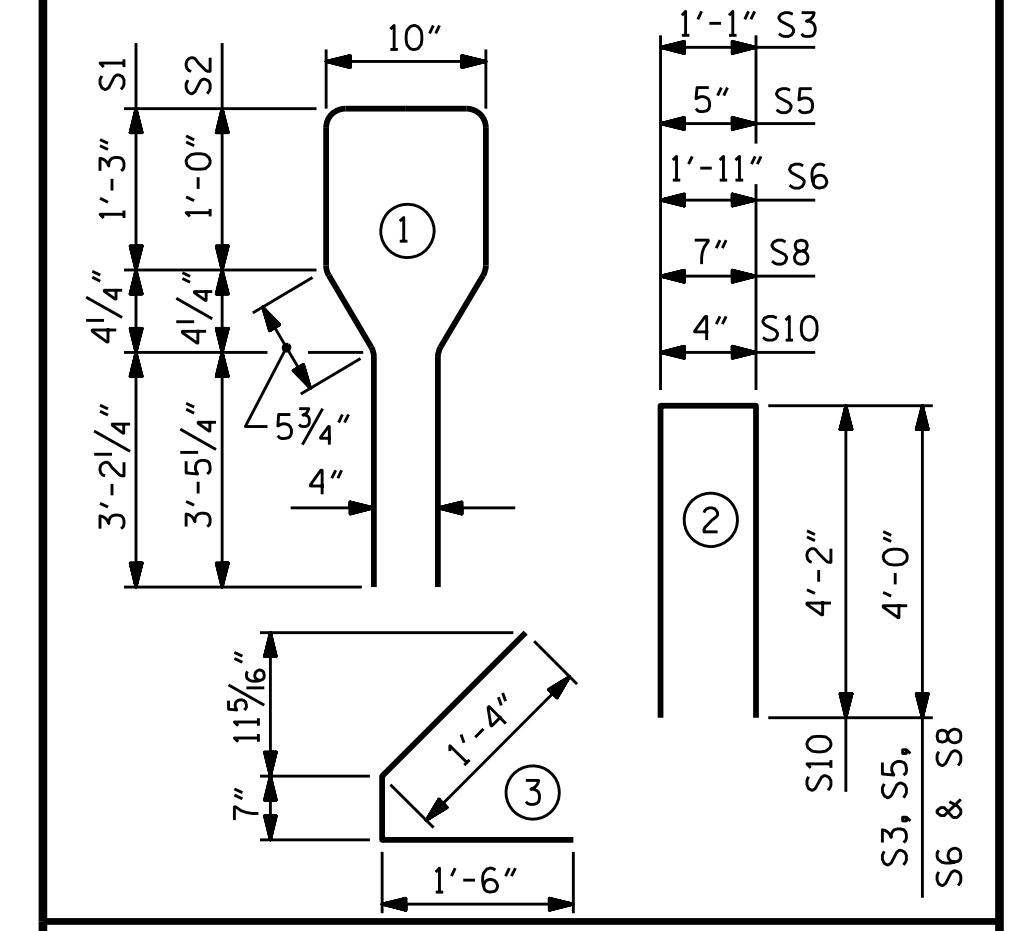


0.6" Ø L. R. GRADE 270 STRANDS		
AREA (SQUARE INCHES)	ULTIMATE STRENGTH (LBS. PER STRAND)	APPLIED PRESTRESS (LBS. PER STRAND)
0.217	58,600	43,950

REINFORCING STEEL FOR ONE GIRDER					
BAR	NUMBER	SIZE	TYPE	LENGTH	WEIGHT
S1	72	#4	1	10'-8"	513
S2	16	#6	1	10'-8"	256
S3	4	#4	2	9'-1"	24
S4	68	#4	3	3'-5"	155
S5	6	#4	2	8'-5"	34
*S7	18	#5	STR	3'-8"	69
S8	4	#4	2	8'-7"	23
S9	2	#3	STR	1'-10"	1
S10	2	#5	2	8'-8"	18
S11	5	#4	STR	7'-0"	23
S13	1	#3	STR	1'-4"	1

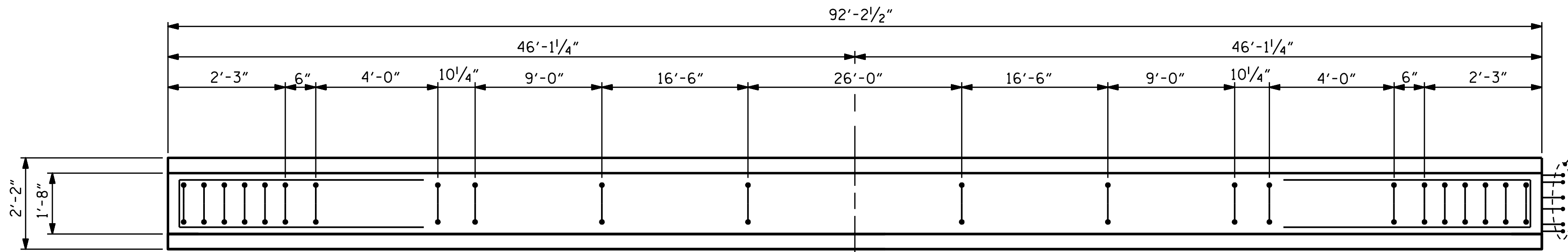
* NOTE: S7 BARS SHALL BE BENT BEFORE SHIPMENT. HEAT BENDING SHALL NOT BE ALLOWED.

BAR TYPES
ALL BAR DIMENSIONS ARE OUT-TO-OUT



- BOND SHALL BE BROKEN ON THESE STRANDS FOR A DISTANCE OF 4'-0" FROM END OF GIRDER. SEE STANDARD SPECIFICATIONS, ARTICLE 1078-7.
- BOND SHALL BE BROKEN ON THESE STRANDS FOR A DISTANCE OF 10'-0" FROM END OF GIRDER. SEE STANDARD SPECIFICATIONS, ARTICLE 1078-7.
- ◆ BOND SHALL BE BROKEN ON THESE STRANDS FOR A DISTANCE OF 18'-0" FROM END OF GIRDER. SEE STANDARD SPECIFICATIONS, ARTICLE 1078-7.

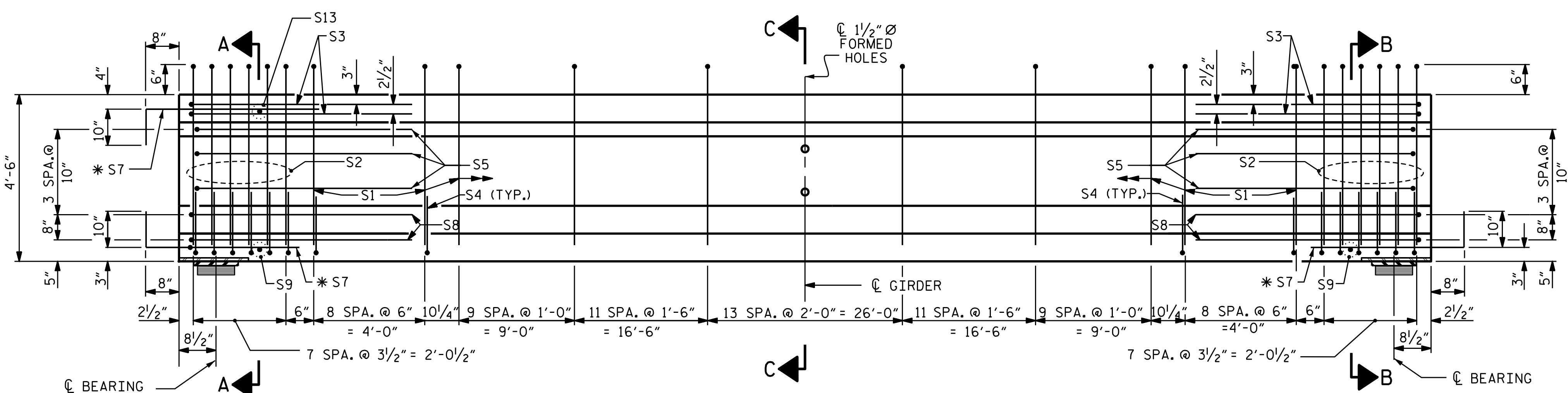
DEBONDING LEGEND



PLAN OF GIRDER

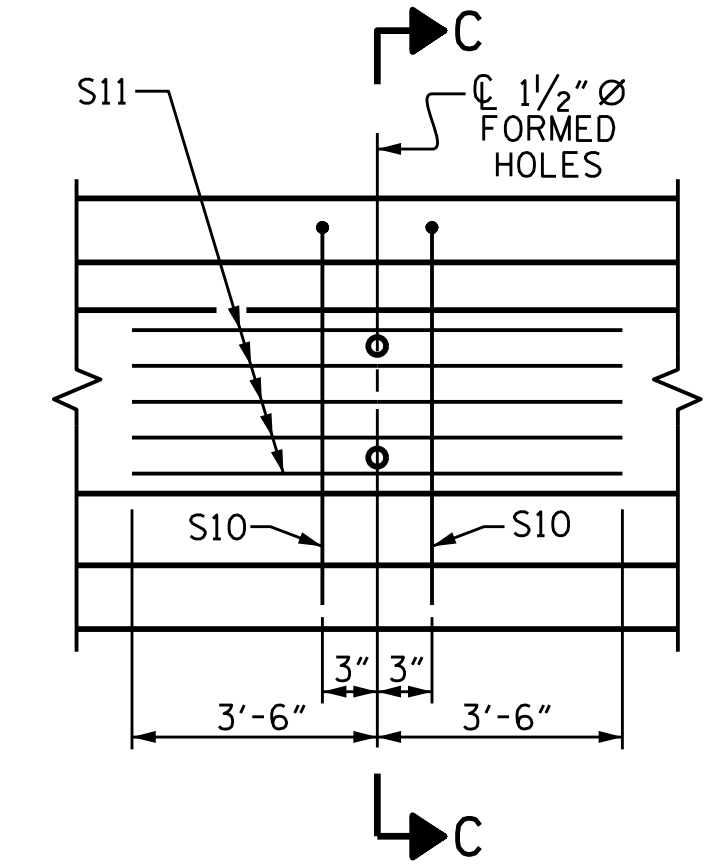
QUANTITIES FOR ONE GIRDER			
REINFORCING STEEL	6500 PSI CONCRETE	0.6" Ø L. R. STRANDS	
LB.	C.Y.	No.	
1117	18.7	38	

GIRDERS REQUIRED		
NUMBER	LENGTH	TOTAL LENGTH
10	92'-2 1/2"	922'-1"



ELEVATION OF GIRDER

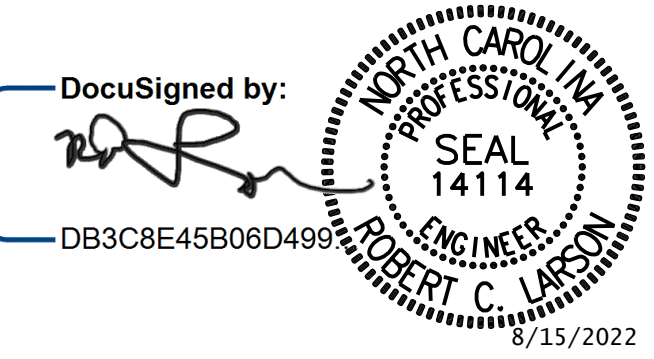
(SEE PARTIAL ELEVATION FOR ADDITIONAL "S" BARS)
SPAN A SHOWN; SPAN B SIMILAR BY REFLECTION ABOUT C GIRDER



PARTIAL ELEVATION
SHOWING INTERMEDIATE DIAPHRAGM REINFORCING STEEL FOR ALL GIRDERS

DESIGN ENGINEER OF RECORD:	DATE: 8/15/2022
ASSEMBLED BY: A. K. ALLANKI	DATE: 07/28/19
CHECKED BY: R. C. LARSON	DATE: 07/30/19
DRAWN BY: ELR 8/91	MAA/GM
CHECKED BY: GRP 8/91	MAA/TMG
	MAA/THC

DOCUMENT NOT CONSIDERED FINAL UNLESS ALL SIGNATURES COMPLETED



DocuSigned by:
DB3C8E45B06D499

REVISIONS						SHEET NO.
NO.	BY:	DATE:	NO.	BY:	DATE:	S1-10
1			3			TOTAL SHEETS
2			4			28