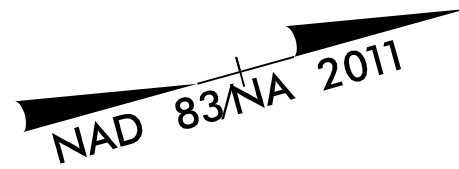


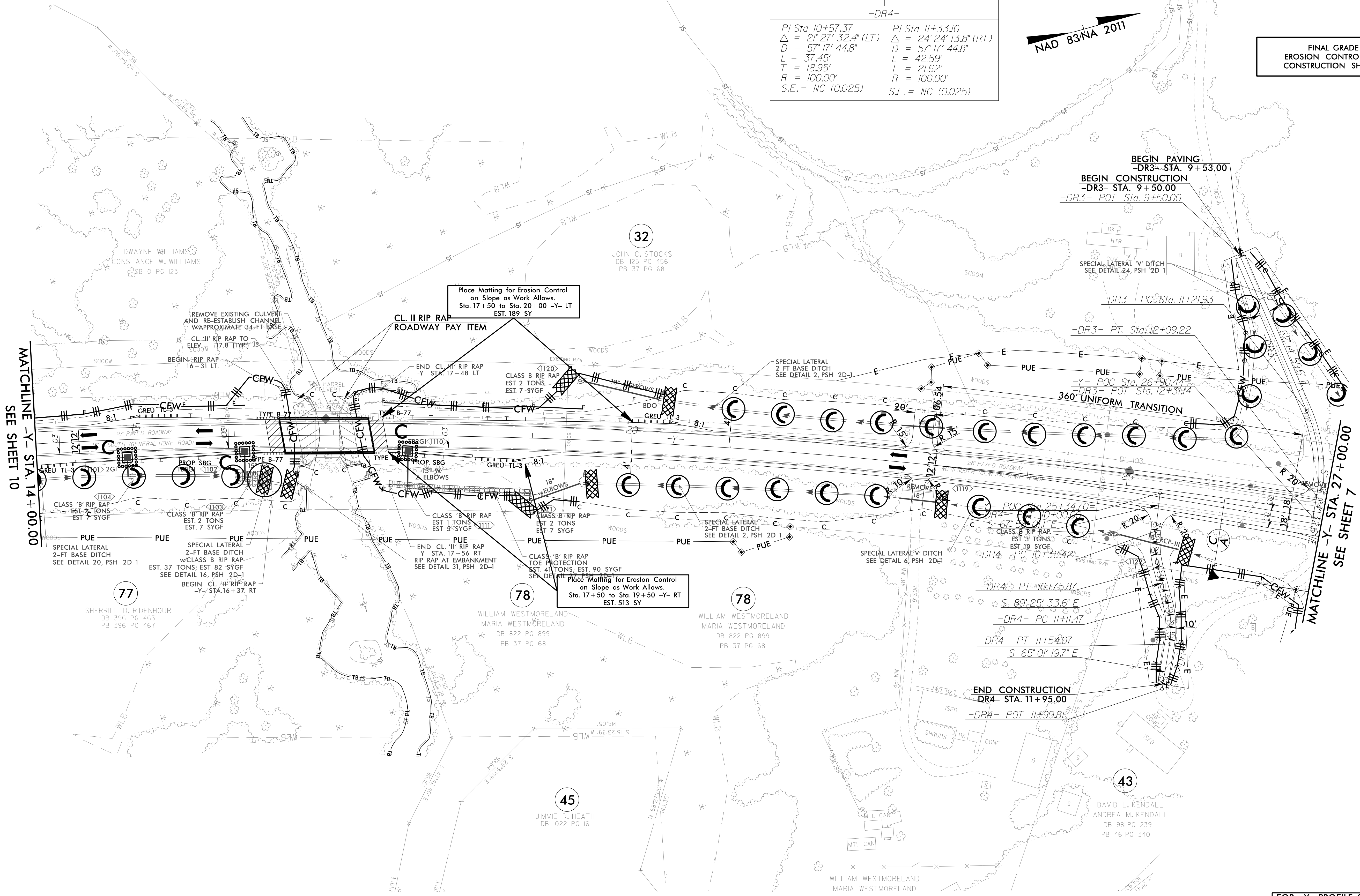


-Y-	-DR3-
PI Sta 19+51.92	PI Sta 11+66.85
$\Delta = 17^{\circ} 57' 59.5''$ (RT)	$\Delta = 33^{\circ} 20' 27.8''$ (RT)
D = 1'00' 09.7"	D = 38' 11' 49.9"
L = 1,791.81'	L = 87.29'
T = 903.32'	T = 44.92'
R = 5,714.14'	R = 150.00'
S.E. = 3%	S.E. = NC (0.025)
R.O. = 81'	

-DR4-	
PI Sta 10+57.37	PI Sta 11+33.10
$\Delta = 21^{\circ} 27' 32.4''$ (LT)	$\Delta = 24^{\circ} 24' 13.8''$ (RT)
D = 57' 17' 44.8"	D = 57' 17' 44.8"
L = 37.45'	L = 42.59'
T = 18.95'	T = 21.62'
R = 100.00'	R = 100.00'
S.E. = NC (0.025)	S.E. = NC (0.025)



FINAL GRADE
EROSION CONTROL FOR
CONSTRUCTION SHEET 11



MATCHLINE -Y- STA. 14+00.00
SEE SHEET 10

MATCHLINE -Y- STA. 27+00.00
SEE SHEET 7

FOR -Y- PROFILE SEE SHEET 27
FOR -DR3- PROFILE SEE SHEET 30
FOR -DR4- PROFILE SEE SHEET 31

8.17/99
C:\PROJECTS\256\CA\EC-21\CONST 11.DWG
DATE PLOTTED: 11/14/2011 10:58:11 AM
PLOTTER: HP DesignJet 2400
SCALE: 1/8" = 1'-0"
SHEET: 11 OF 11