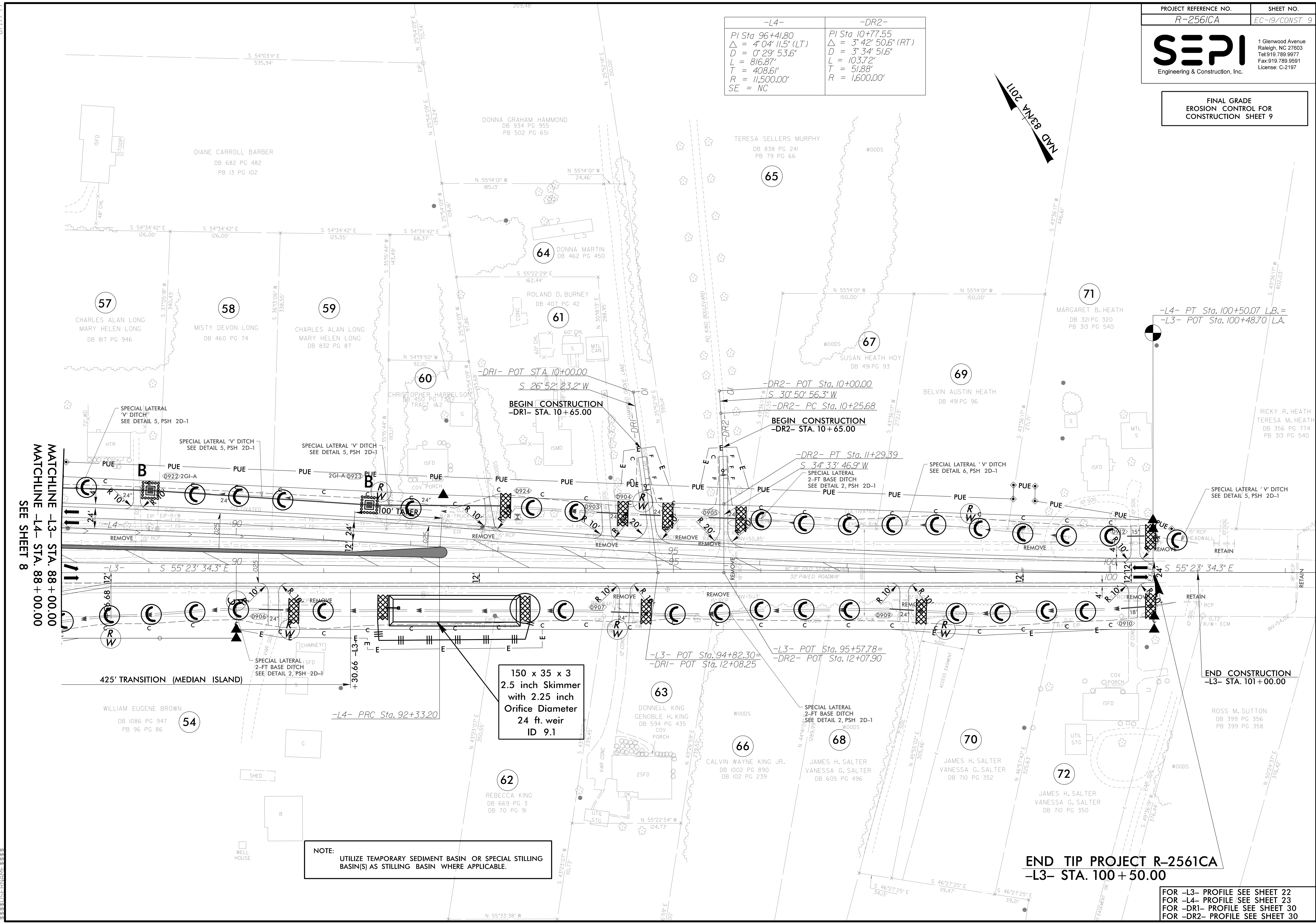




FINAL GRADE
EROSION CONTROL FOR
CONSTRUCTION SHEET 9

-L4-	-DR2-
PI Sta 96+41.80	PI Sta 10+77.55
$\Delta = 4' 04" 11.5" (LT)$	$\Delta = 3' 42" 50.6" (RT)$
$D = 0' 29' 53.6"$	$D = 3' 34' 51.6"$
$L = 816.87'$	$L = 103.72'$
$T = 408.61'$	$T = 51.88'$
$R = 11,500.00'$	$R = 1,600.00'$
SE = NC	



MATCHLINE -L3- STA. 88+00.00
MATCHLINE -L4- STA. 88+00.00
SEE SHEET 8

-L4- PT Sta. 100+50.07 L.B. =
-L3- POT Sta. 100+48.70 L.A.

150 x 35 x 3
2.5 inch Skimmer
with 2.25 inch
Orifice Diameter
24 ft. weir
ID 9.1

NOTE:
UTILIZE TEMPORARY SEDIMENT BASIN OR SPECIAL STILLING
BASIN(S) AS STILLING BASIN WHERE APPLICABLE.

END TIP PROJECT R-2561CA
-L3- STA. 100 + 50.00

FOR -L3- PROFILE SEE SHEET 22
FOR -L4- PROFILE SEE SHEET 23
FOR -DR1- PROFILE SEE SHEET 30
FOR -DR2- PROFILE SEE SHEET 30

8.17/99
\$\$\$\$\$\$