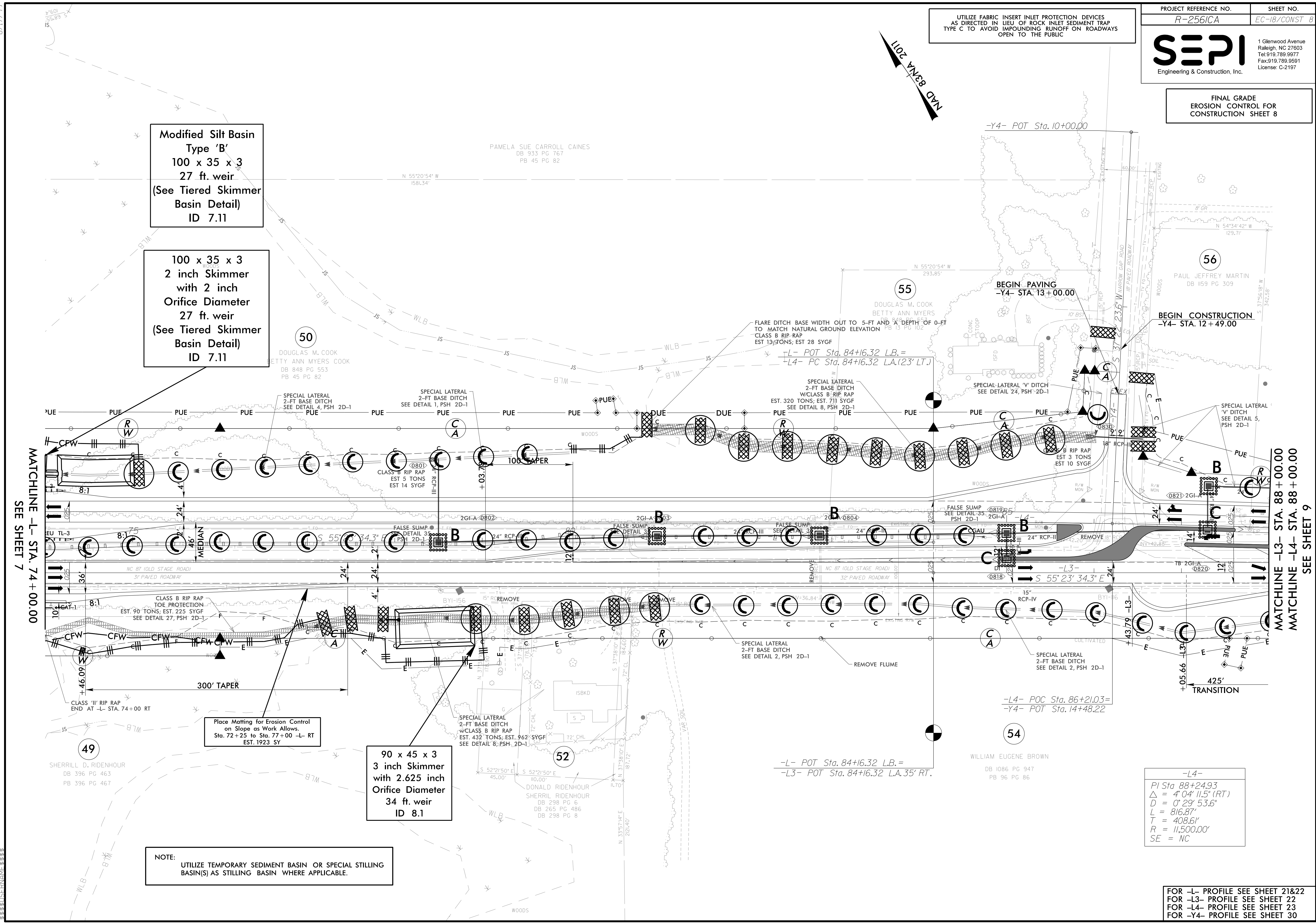


UTILIZE FABRIC INSERT INLET PROTECTION DEVICES
AS DIRECTED IN LIEU OF ROCK INLET SEDIMENT TRAP
TYPE C TO AVOID IMPOUNDING RUNOFF ON ROADWAYS
OPEN TO THE PUBLIC

MAD 8/24/2017



Modified Silt Basin
Type 'B'
100 x 35 x 3
27 ft. weir
(See Tiered Skimmer
Basin Detail)
ID 7.11

100 x 35 x 3
2 inch Skimmer
with 2 inch
Orifice Diameter
27 ft. weir
(See Tiered Skimmer
Basin Detail)
ID 7.11

90 x 45 x 3
3 inch Skimmer
with 2.625 inch
Orifice Diameter
34 ft. weir
ID 8.1

Place Matting for Erosion Control
on Slope as Work Allows.
Sta. 72+25 to Sta. 77+00 -L- RT
EST. 1923 SY

NOTE:
UTILIZE TEMPORARY SEDIMENT BASIN OR SPECIAL STILLING
BASIN(S) AS STILLING BASIN WHERE APPLICABLE.

-L4-
PI Sta 88+24.93
Δ = 4' 04" 11.5" (RT)
D = 0' 29" 53.6"
L = 816.87'
T = 408.61'
R = 11,500.00'
SE = NC

FOR -L- PROFILE SEE SHEET 21&22
FOR -L3- PROFILE SEE SHEET 22
FOR -L4- PROFILE SEE SHEET 23
FOR -Y4- PROFILE SEE SHEET 30