



FINAL GRADE  
EROSION CONTROL FOR  
CONSTRUCTION SHEET 2B-2

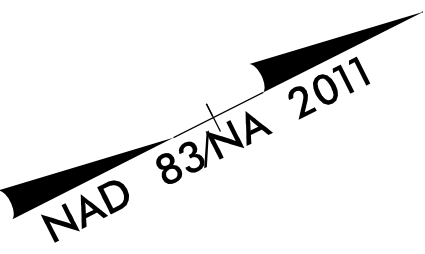
# DETOUR EROSION CONTROL

**-YDET-**  
PI Sta 39+36.43  
 $\Delta = 6' 28' 45.7''$  (RT)  
 $D = 1' 58' 32.6''$   
 $L = 327.95'$   
 $T = 164.15'$   
 $R = 2,900.00'$   
 $S.E. = 3\%$   
 $R.O. = 57'$

NOTE: USE THIS SHEET FOR TEMPORARY TRAFFIC MAINTENANCE DURING CONSTRUCTION.  
DETOUR DESIGN SPEED = 45 MPH MAX.

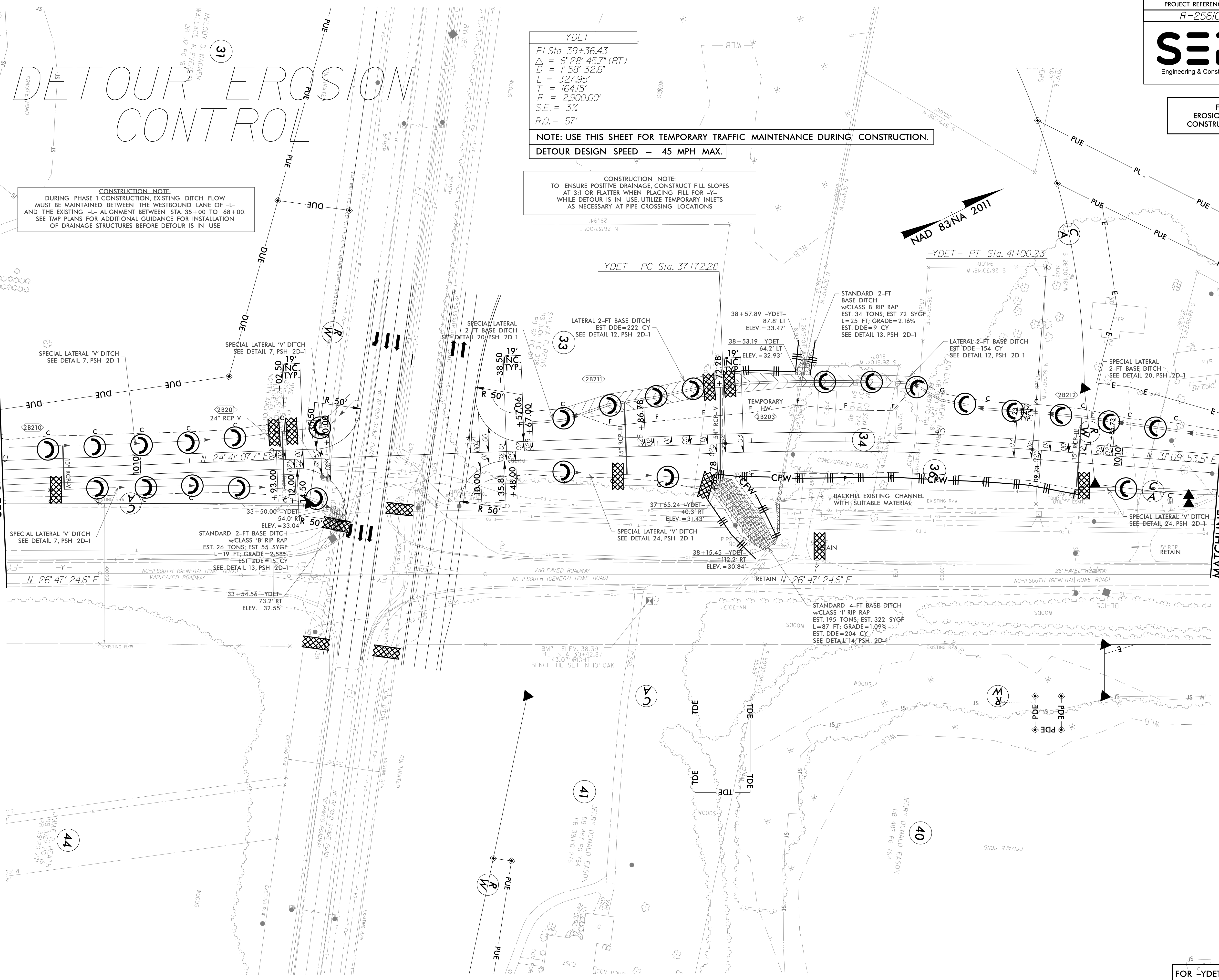
**CONSTRUCTION NOTE:**  
DURING PHASE 1 CONSTRUCTION, EXISTING DITCH FLOW MUST BE MAINTAINED BETWEEN THE WESTBOUND LANE OF L- AND THE EXISTING L- ALIGNMENT BETWEEN STA. 35+00 TO 68+00. SEE TMP PLANS FOR ADDITIONAL GUIDANCE FOR INSTALLATION OF DRAINAGE STRUCTURES BEFORE DETOUR IS IN USE

**CONSTRUCTION NOTE:**  
TO ENSURE POSITIVE DRAINAGE, CONSTRUCT FILL SLOPES AT 3:1 OR FLATTER WHEN PLACING FILL FOR -Y- WHILE DETOUR IS IN USE. UTILIZE TEMPORARY INLETS AS NECESSARY AT PIPE CROSSING LOCATIONS



MATCHLINE -YDET- STA. 30+00.00  
SEE SHEET 2B-1

MATCHLINE -YDET- STA. 43+00.00  
SEE SHEET 2B-3



FOR -YDET- PROFILE SEE SHEET 32