

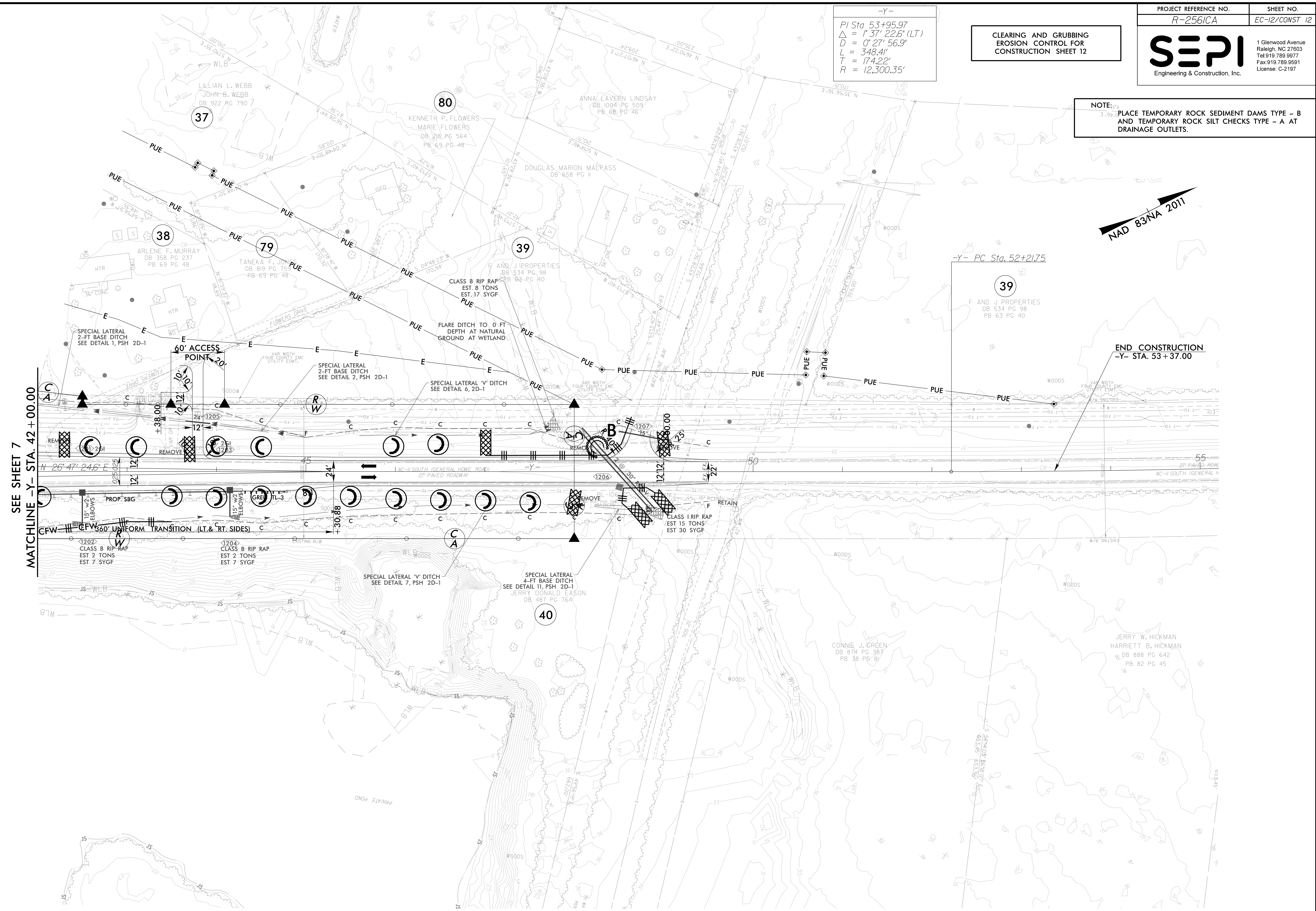
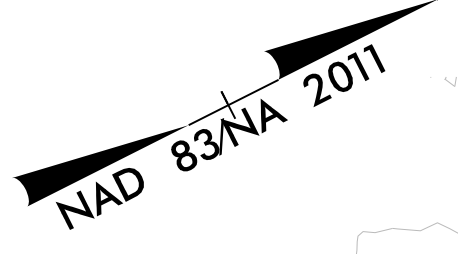
8.17/99

-Y-
 PI Sta 53+95.97
 $\Delta = 1' 37'' 22.6'' (LT)$
 $D = 0' 27'' 56.9''$
 $L = 348.4'$
 $T = 174.22'$
 $R = 12,300.35'$

CLEARING AND GRUBBING
 EROSION CONTROL FOR
 CONSTRUCTION SHEET 12

| | |
|---|----------------|
| PROJECT REFERENCE NO. | SHEET NO. |
| R-256/CA | EC-12/CONST 12 |
| SEPI | |
| Engineering & Construction, Inc. | |
| 1 Glenwood Avenue Raleigh, NC 27603 Tel: 919.789.9977 Fax: 919.789.9591 License: C-2197 | |

NOTE:
 PLACE TEMPORARY ROCK SEDIMENT DAMS TYPE - B
 AND TEMPORARY ROCK SILT CHECKS TYPE - A AT
 DRAINAGE OUTLETS.



SEE SHEET 7
 MATCHLINE -Y- STA. 42 + 00.00

END CONSTRUCTION
 -Y- STA. 53 + 37.00

REVISIONS

1
 2
 3
 4
 5
 6
 7
 8
 9
 10
 11
 12
 13
 14
 15
 16
 17
 18
 19
 20
 21
 22
 23
 24
 25
 26
 27
 28
 29
 30
 31
 32
 33
 34
 35
 36
 37
 38
 39
 40
 41
 42
 43
 44
 45
 46
 47
 48
 49
 50
 51
 52
 53
 54
 55
 56
 57
 58
 59
 60
 61
 62
 63
 64
 65
 66
 67
 68
 69
 70
 71
 72
 73
 74
 75
 76
 77
 78
 79
 80
 81
 82
 83
 84
 85
 86
 87
 88
 89
 90
 91
 92
 93
 94
 95
 96
 97
 98
 99
 100

FOR -Y- PROFILE SEE SHEET 28