

8.17/99  
\$\$\$\$\$\$

EV.
1.82
1.79
1.80
1.81
1.81
1.93
5.55
7.60
1.74
1.65
1.68
1.72
1.70
1.78
5.48
1.43

Modified Silt Basin  
Type 'B'  
100 x 35 x 3  
27 ft. weir  
(See Tiered Skimmer  
Basin Detail)  
ID 7.11

100 x 35 x 3  
2 inch Skimmer  
with 2 inch  
Orifice Diameter  
27 ft. weir  
(See Tiered Skimmer  
Basin Detail)  
ID 7.11

90 x 45 x 3  
3 inch Skimmer  
with 2.625 inch  
Orifice Diameter  
34 ft. weir  
ID 8.1

NOTE:  
PLACE TEMPORARY ROCK SEDIMENT DAMS TYPE - B  
AND TEMPORARY ROCK SILT CHECKS TYPE - A AT  
DRAINAGE OUTLETS.

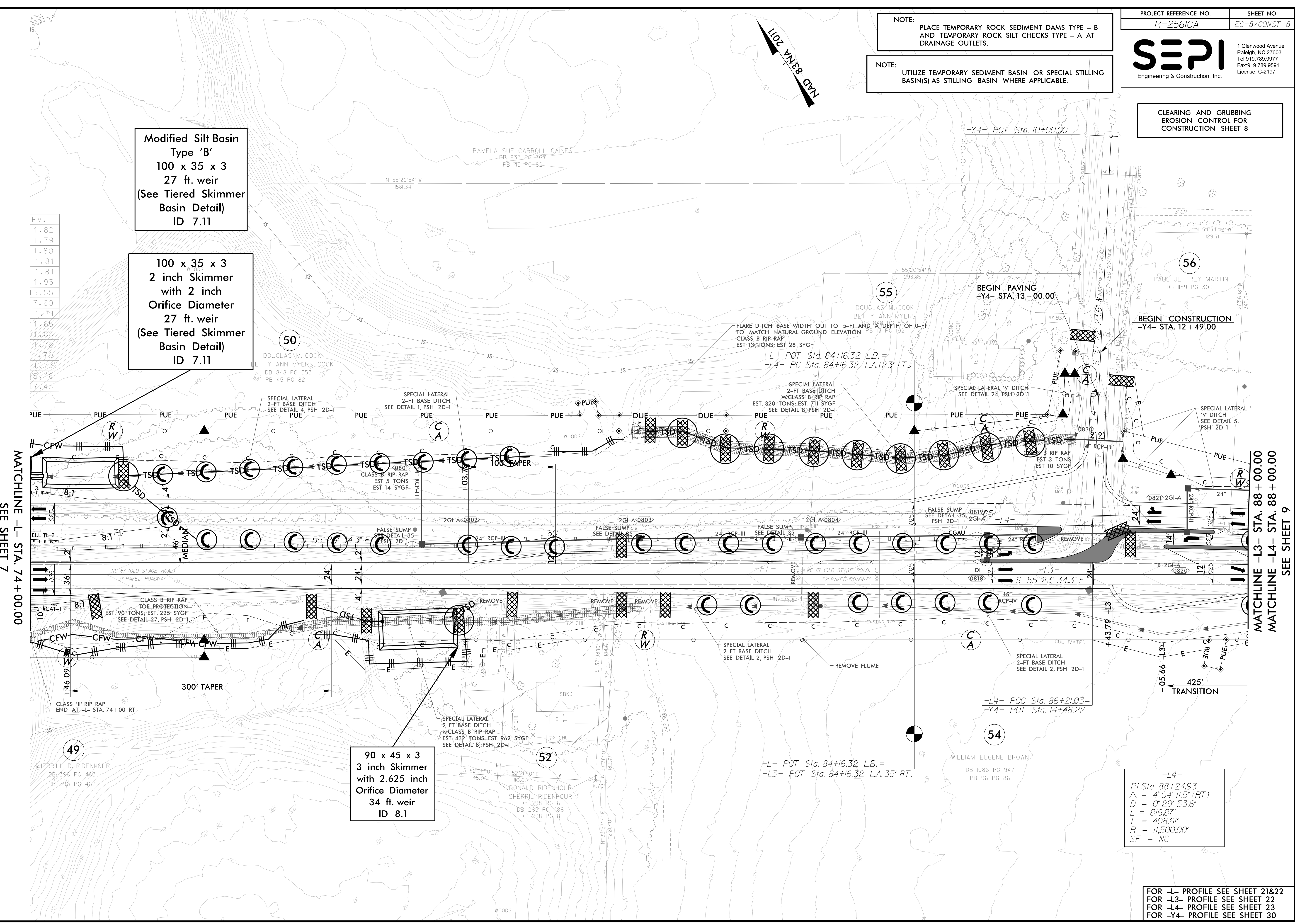
NOTE:  
UTILIZE TEMPORARY SEDIMENT BASIN OR SPECIAL STILLING  
BASIN(S) AS STILLING BASIN WHERE APPLICABLE.

PROJECT REFERENCE NO. R-256/CA	SHEET NO. EC-8/CONST 8
-----------------------------------	---------------------------

**SEPI**  
Engineering & Construction, Inc.

1 Glenwood Avenue  
Raleigh, NC 27603  
Tel: 919.789.9977  
Fax: 919.789.9591  
License: C-2197

CLEARING AND GRUBBING  
EROSION CONTROL FOR  
CONSTRUCTION SHEET 8



-L4-  
PI Sta 88+24.93  
Δ = 4' 04" 11.5" (RT)  
D = 0' 29" 53.6"  
L = 816.87'  
T = 408.61'  
R = 11,500.00'  
SE = NC

FOR -L- PROFILE SEE SHEET 21&22  
FOR -L3- PROFILE SEE SHEET 22  
FOR -L4- PROFILE SEE SHEET 23  
FOR -Y4- PROFILE SEE SHEET 30