
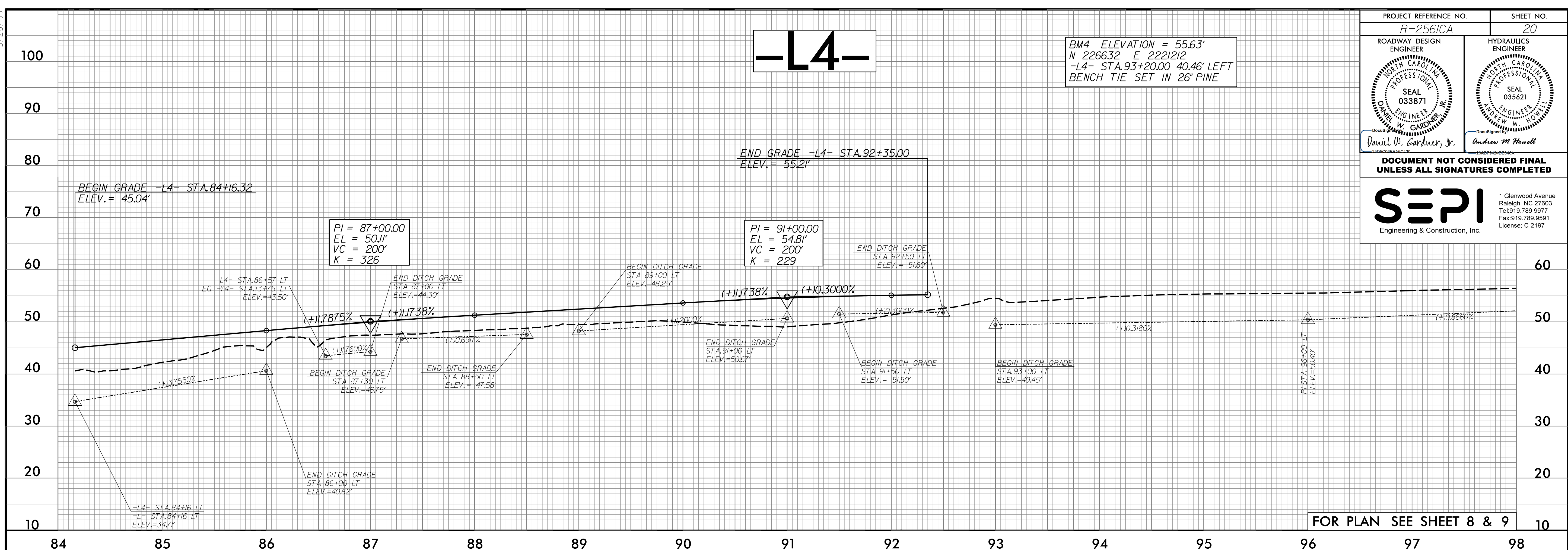


5/28/99

-L4-

BM4 ELEVATION = 55.63'
N 226632 E 2221212
-L4- STA.93+20.00 40.46' LEFT
BENCH TIE SET IN 26" PINE

PROJECT REFERENCE NO. R-2561CA	SHEET NO. 20
ROADWAY DESIGN ENGINEER DANIEL W. GARDNER, JR. SEAL 033871 ENGINEER, P.E.	HYDRAULICS ENGINEER ANDREW M. HOWELL SEAL 035621 ENGINEER, P.E.
DOCUMENT NOT CONSIDERED FINAL UNLESS ALL SIGNATURES COMPLETED	
 SEPI Engineering & Construction, Inc.	
1 Glenwood Avenue Raleigh, NC 27603 Tel: 919.789.9977 Fax: 919.789.9591 License: C-2197	



FOR PLAN SEE SHEET 8 & 9

-L4-

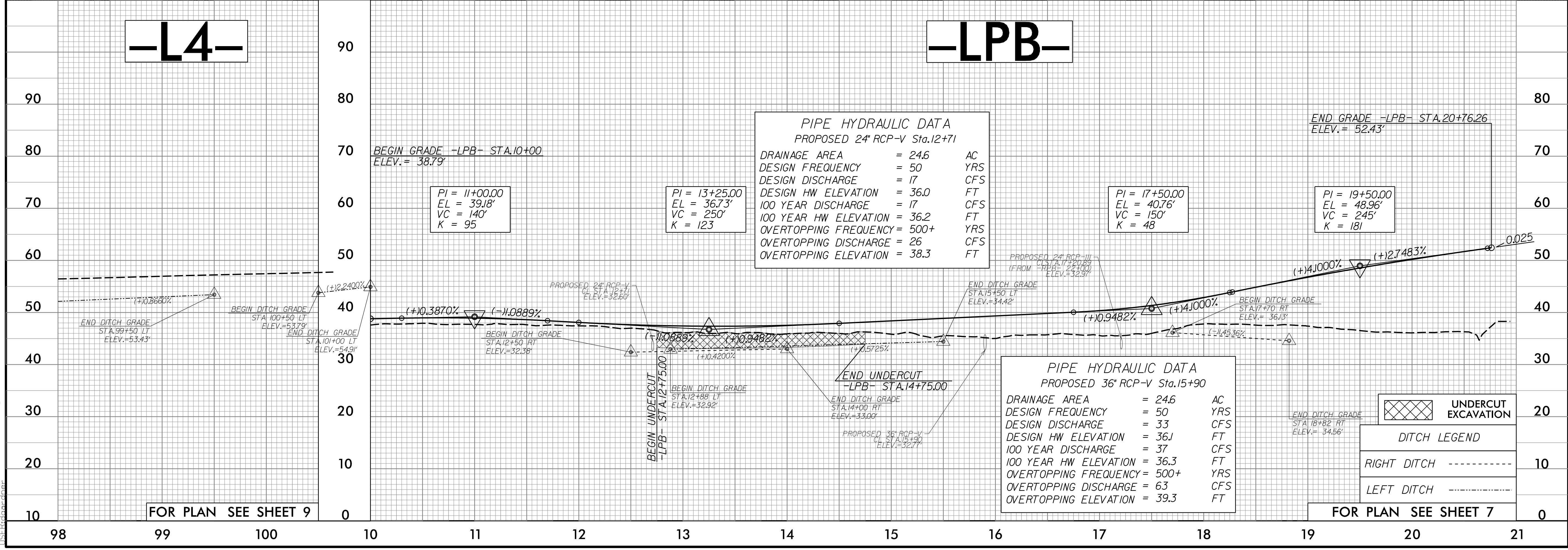
-LPB-

PIPE HYDRAULIC DATA
PROPOSED 24" RCP-V Sta.12+71

DRAINAGE AREA	= 24.6	AC
DESIGN FREQUENCY	= 50	YRS
DESIGN DISCHARGE	= 17	CFS
DESIGN HW ELEVATION	= 36.0	FT
100 YEAR DISCHARGE	= 17	CFS
100 YEAR HW ELEVATION	= 36.2	FT
OVERTOPPING FREQUENCY	= 500+	YRS
OVERTOPPING DISCHARGE	= 26	CFS
OVERTOPPING ELEVATION	= 38.3	FT

PIPE HYDRAULIC DATA
PROPOSED 36" RCP-V Sta.15+90

DRAINAGE AREA	= 24.6	AC
DESIGN FREQUENCY	= 50	YRS
DESIGN DISCHARGE	= 33	CFS
DESIGN HW ELEVATION	= 36.1	FT
100 YEAR DISCHARGE	= 37	CFS
100 YEAR HW ELEVATION	= 36.3	FT
OVERTOPPING FREQUENCY	= 500+	YRS
OVERTOPPING DISCHARGE	= 63	CFS
OVERTOPPING ELEVATION	= 39.3	FT



FOR PLAN SEE SHEET 9

FOR PLAN SEE SHEET 7

8/25/2002 R-2561CA_Rdy.pfl_20.dgn
11:55:00 am