
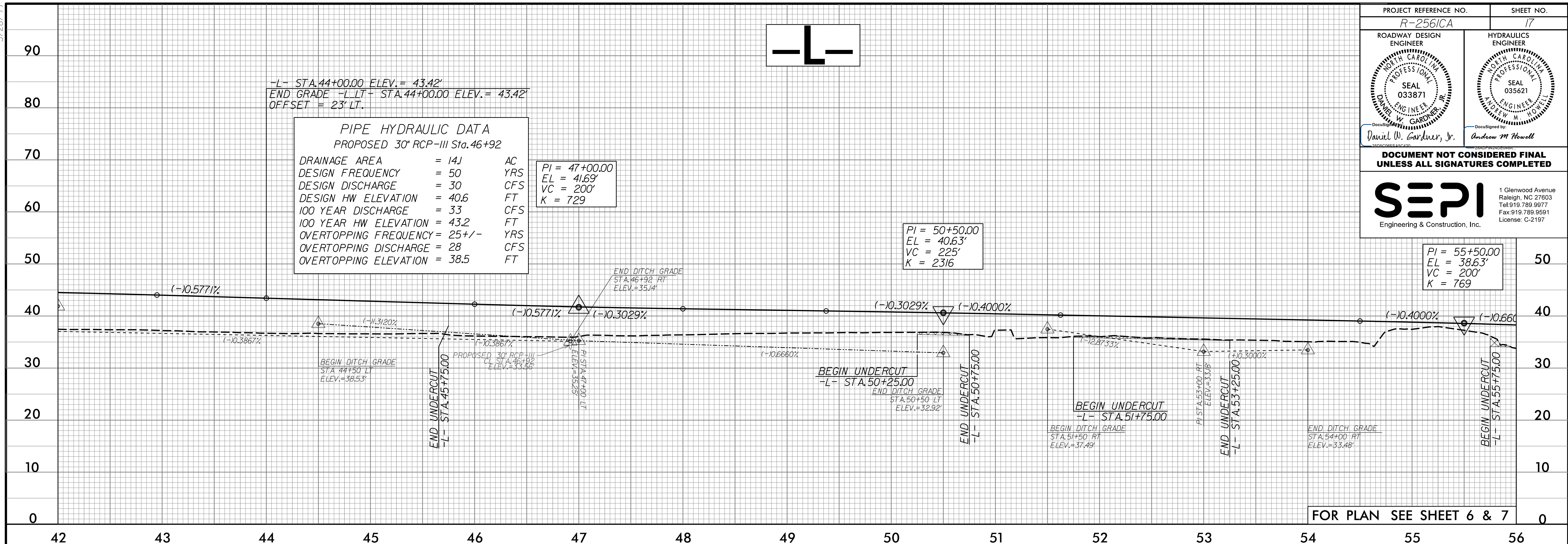


5/28/99

PROJECT REFERENCE NO. R-2561CA	SHEET NO. 17
ROADWAY DESIGN ENGINEER DANIEL W. GARDNER, JR. SEAL 033871 ENGINEER NORTH CAROLINA PROFESSIONAL SEAL	HYDRAULICS ENGINEER ANDREW M. HOWELL SEAL 035621 ENGINEER NORTH CAROLINA PROFESSIONAL SEAL
DOCUMENT NOT CONSIDERED FINAL UNLESS ALL SIGNATURES COMPLETED	
 SEPI Engineering & Construction, Inc.	
1 Glenwood Avenue Raleigh, NC 27603 Tel: 919.789.9977 Fax: 919.789.9591 License: C-2197	



PIPE HYDRAULIC DATA
PROPOSED 30" RCP-III Sta. 46+92

DRAINAGE AREA	= 14.1	AC
DESIGN FREQUENCY	= 50	YRS
DESIGN DISCHARGE	= 30	CFS
DESIGN HW ELEVATION	= 40.6	FT
100 YEAR DISCHARGE	= 33	CFS
100 YEAR HW ELEVATION	= 43.2	FT
OVERTOPPING FREQUENCY	= 25+/-	YRS
OVERTOPPING DISCHARGE	= 28	CFS
OVERTOPPING ELEVATION	= 38.5	FT

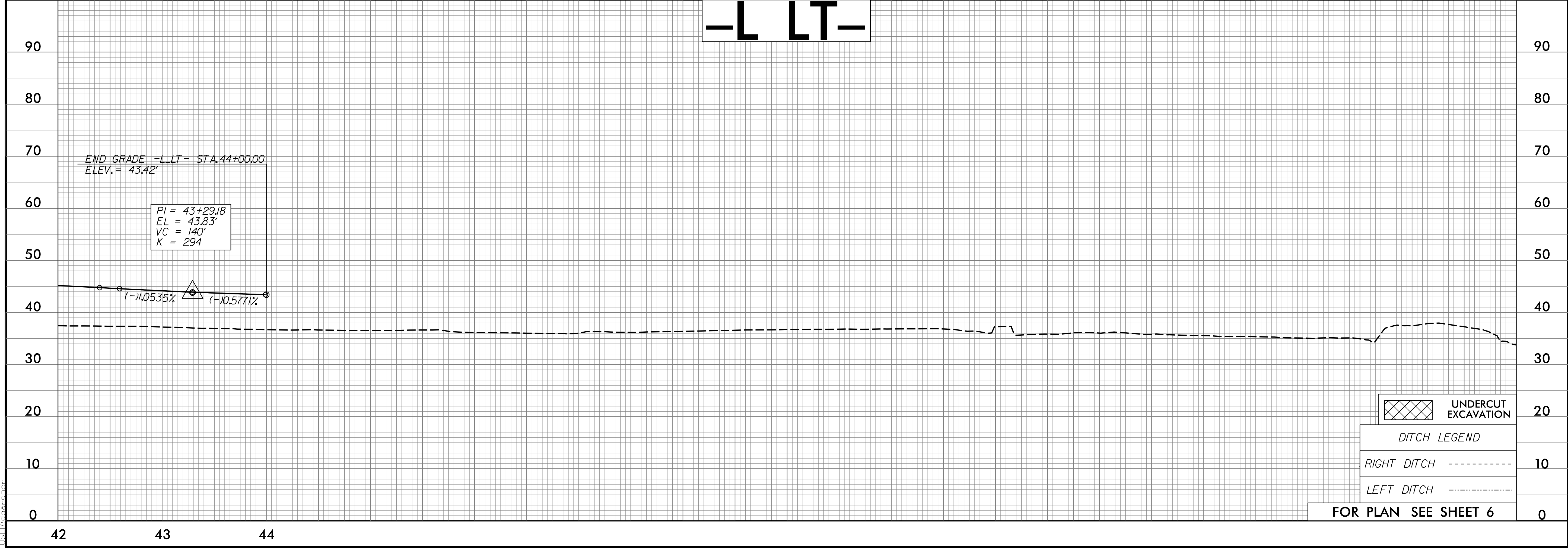
PI = 47+00.00
EL = 41.69'
VC = 200'
K = 729

PI = 50+50.00
EL = 40.63'
VC = 225'
K = 2316

PI = 55+50.00
EL = 38.63'
VC = 200'
K = 769

FOR PLAN SEE SHEET 6 & 7

8/26/2002 R-2561CA_Rdy.pfl.17.dgn



PI = 43+29.18
EL = 43.83'
VC = 140'
K = 294

END GRADE -L-LT- STA. 44+00.00
ELEV. = 43.42'

 UNDERCUT EXCAVATION

DITCH LEGEND

RIGHT DITCH - - - - - 10

LEFT DITCH - - - - - 10

FOR PLAN SEE SHEET 6