
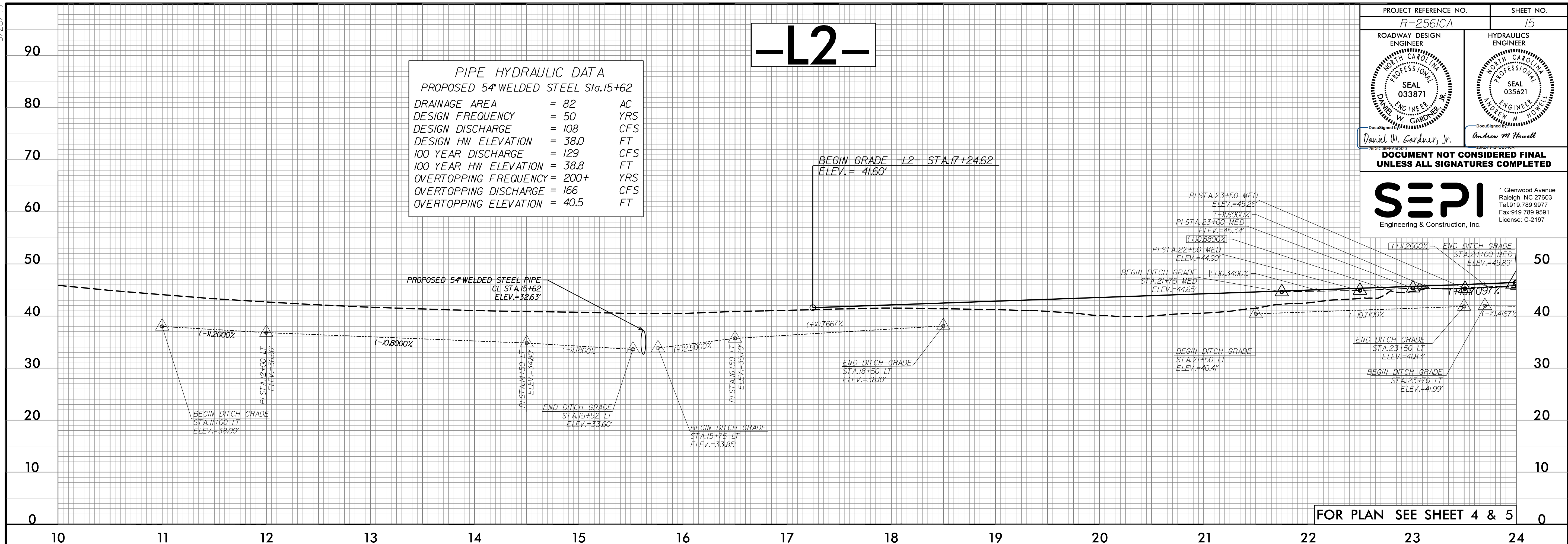


5/28/99

PROJECT REFERENCE NO. R-2561CA	SHEET NO. 15
ROADWAY DESIGN ENGINEER SEAL 033871 DAVID W. GARDNER, JR. ENGINEER DAVID W. GARDNER, JR.	HYDRAULICS ENGINEER SEAL 035621 ANDREW M. HOWELL ENGINEER ANDREW M. HOWELL
DOCUMENT NOT CONSIDERED FINAL UNLESS ALL SIGNATURES COMPLETED	
 <b>SEPI</b> Engineering & Construction, Inc.	
<small>1 Glenwood Avenue Raleigh, NC 27603 Tel: 919.789.9977 Fax: 919.789.9591 License: C-2197</small>	

# -L2-

PIPE HYDRAULIC DATA		
PROPOSED 54" WELDED STEEL STA. 15+62		
DRAINAGE AREA	= 82	AC
DESIGN FREQUENCY	= 50	YRS
DESIGN DISCHARGE	= 108	CFS
DESIGN HW ELEVATION	= 38.0	FT
100 YEAR DISCHARGE	= 129	CFS
100 YEAR HW ELEVATION	= 38.8	FT
OVERTOPPING FREQUENCY	= 200+	YRS
OVERTOPPING DISCHARGE	= 166	CFS
OVERTOPPING ELEVATION	= 40.5	FT



FOR PLAN SEE SHEET 4 & 5

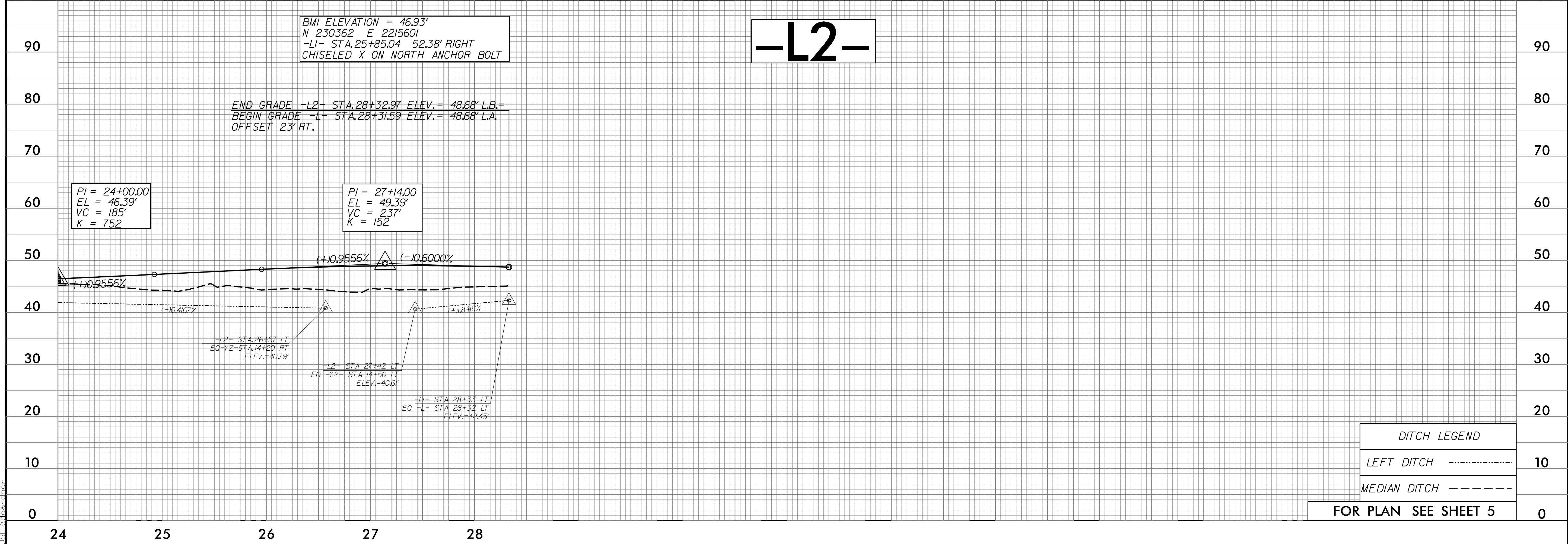
# -L2-

BMI ELEVATION = 46.93'  
 N 230362 E 2215601  
 -L1- STA. 25+85.04 52.38' RIGHT  
 CHISELED X ON NORTH ANCHOR BOLT

END GRADE -L2- STA. 28+32.97 ELEV. = 48.68' L.B. =  
 BEGIN GRADE -L- STA. 28+31.59 ELEV. = 48.68' L.A.  
 OFFSET 23' RT.

PI = 24+00.00  
 EL = 46.39'  
 VC = 185'  
 K = 752

PI = 27+14.00  
 EL = 49.39'  
 VC = 237'  
 K = 152



DITCH LEGEND	
LEFT DITCH	-----
MEDIAN DITCH	-----

FOR PLAN SEE SHEET 5

8/25/2002 R-2561CA\_Rdy.pfl\_15.dgn