
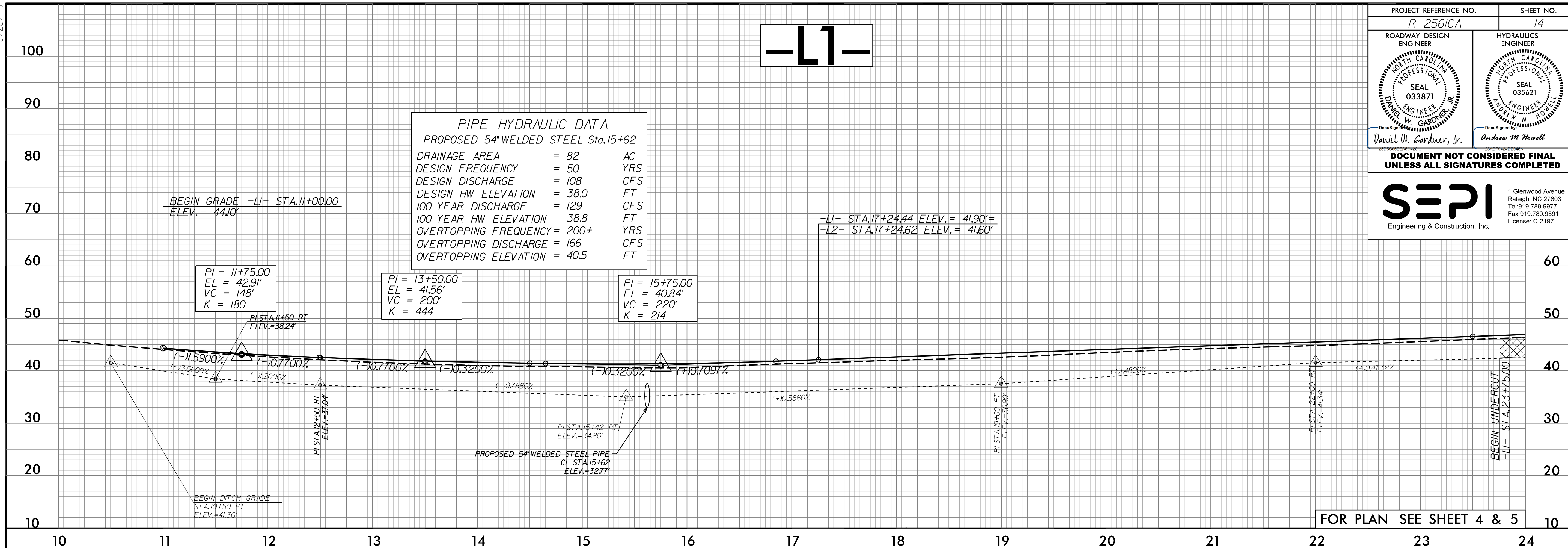


5/28/99

PROJECT REFERENCE NO. <b>R-2561CA</b>	SHEET NO. <b>14</b>
ROADWAY DESIGN ENGINEER <b>DAVID W. GARDNER, JR.</b> SEAL 033871 NORTH CAROLINA PROFESSIONAL ENGINEER	HYDRAULICS ENGINEER <b>ANDREW M. HOWELL</b> SEAL 035621 NORTH CAROLINA PROFESSIONAL ENGINEER
DOCUMENT NOT CONSIDERED FINAL UNLESS ALL SIGNATURES COMPLETED	
 <b>SEPI</b> Engineering & Construction, Inc.	
<small>1 Glenwood Avenue Raleigh, NC 27603 Tel: 919.789.9977 Fax: 919.789.9591 License: C-2197</small>	

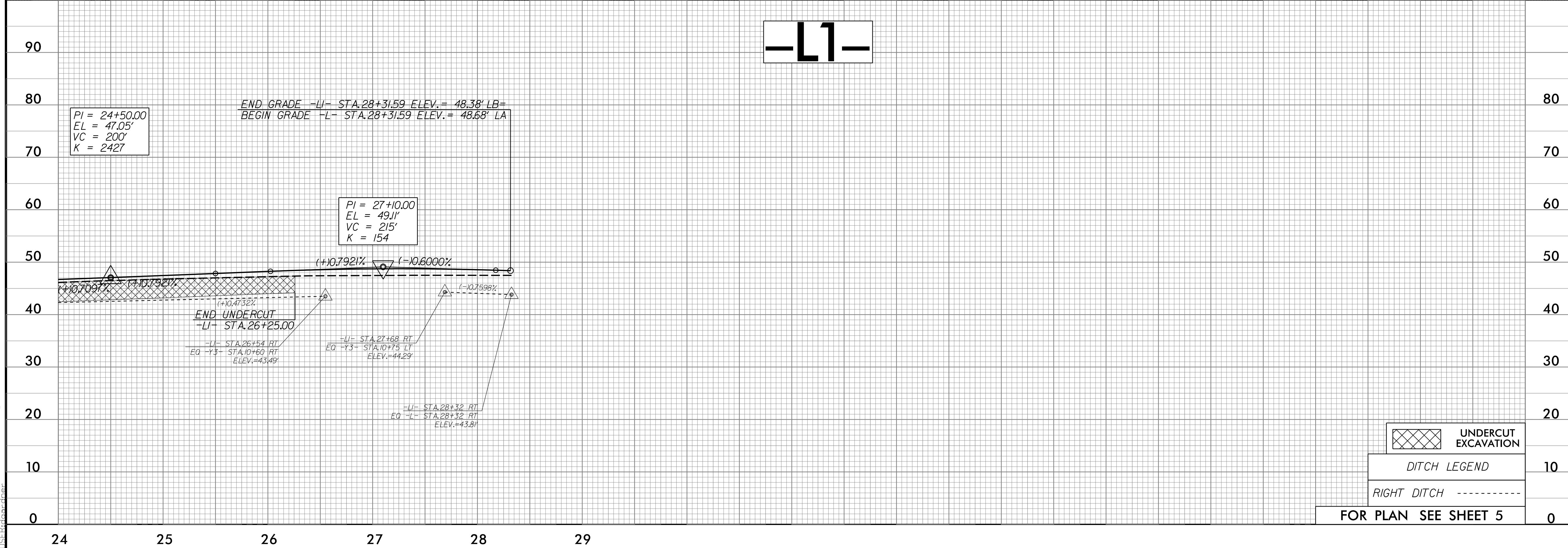


**PIPE HYDRAULIC DATA**  
PROPOSED 54" WELDED STEEL STA.15+62

DRAINAGE AREA	= 82	AC
DESIGN FREQUENCY	= 50	YRS
DESIGN DISCHARGE	= 108	CFS
DESIGN HW ELEVATION	= 38.0	FT
100 YEAR DISCHARGE	= 129	CFS
100 YEAR HW ELEVATION	= 38.8	FT
OVERTOPPING FREQUENCY	= 200+	YRS
OVERTOPPING DISCHARGE	= 166	CFS
OVERTOPPING ELEVATION	= 40.5	FT

**-L1-**

FOR PLAN SEE SHEET 4 & 5



**-L1-**

 UNDERCUT EXCAVATION

 DITCH LEGEND

 RIGHT DITCH

FOR PLAN SEE SHEET 5

8/25/2002 R-2561CA\_Rdy.pfl\_14.dgn