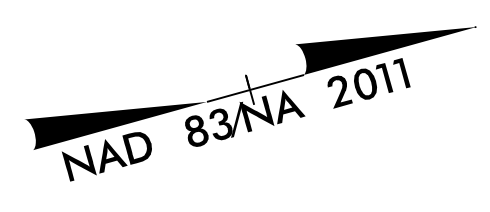


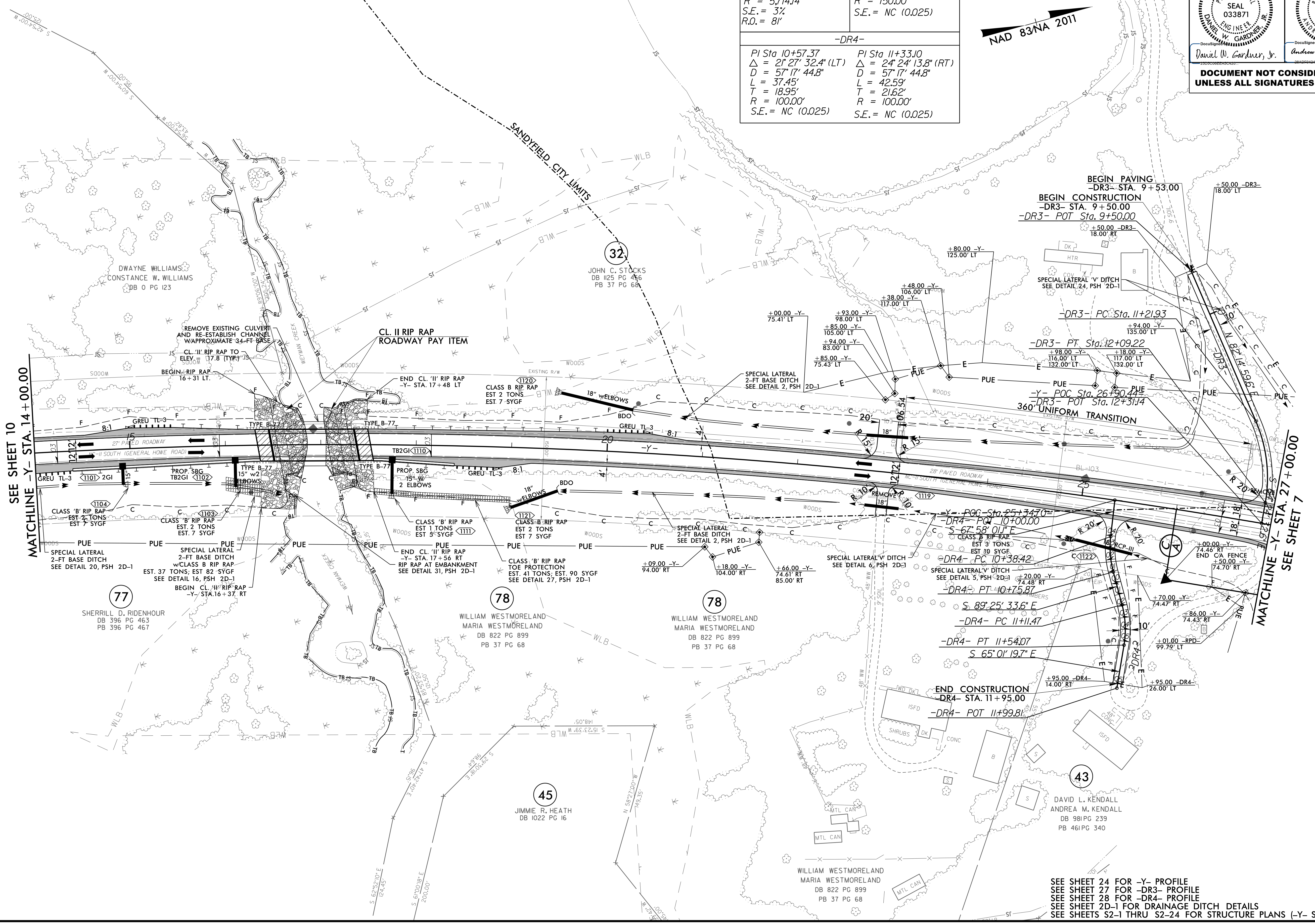
8/17/99
8/25/2014
R-2561CA_Rdy_psh_11.dgn
11:58:40 AM

-Y-	-DR3-
PI Sta 19+51.92 $\Delta = 17^{\circ} 57' 59.5" (RT)$ $D = 1^{\circ} 00' 09.7"$ $L = 1791.81'$ $T = 903.32'$ $R = 5714.14'$ $S.E. = 3\%$ $R.O. = 81'$	PI Sta 11+66.85 $\Delta = 33^{\circ} 20' 27.8" (RT)$ $D = 38^{\circ} 11' 49.9"$ $L = 87.29'$ $T = 44.92'$ $R = 150.00'$ $S.E. = NC (0.025)$
-DR4-	-DR3-
PI Sta 10+57.37 $\Delta = 21^{\circ} 27' 32.4" (LT)$ $D = 57^{\circ} 17' 44.8"$ $L = 37.45'$ $T = 18.95'$ $R = 100.00'$ $S.E. = NC (0.025)$	PI Sta 11+33.10 $\Delta = 24^{\circ} 24' 13.8" (RT)$ $D = 57^{\circ} 17' 44.8"$ $L = 42.59'$ $T = 21.62'$ $R = 100.00'$ $S.E. = NC (0.025)$

SEPI
Engineering & Construction, Inc.
1 Glenwood Avenue
Raleigh, NC 27603
Tel: 919.789.9577
Fax: 919.789.9591
License: C-2197



PROJECT REFERENCE NO. R-2561CA	SHEET NO. 11
RW SHEET NO.	
ROADWAY DESIGN ENGINEER	HYDRAULICS ENGINEER
 Daniel W. Gardner, Jr.	 Andrew M. Howell
DOCUMENT NOT CONSIDERED FINAL UNLESS ALL SIGNATURES COMPLETED	



SEE SHEET 24 FOR -Y- PROFILE
SEE SHEET 27 FOR -DR3- PROFILE
SEE SHEET 28 FOR -DR4- PROFILE
SEE SHEET 2D-1 FOR DRAINAGE DITCH DETAILS
SEE SHEETS S2-1 THRU S2-24 FOR STRUCTURE PLANS (-Y- STA. 16+93.00)