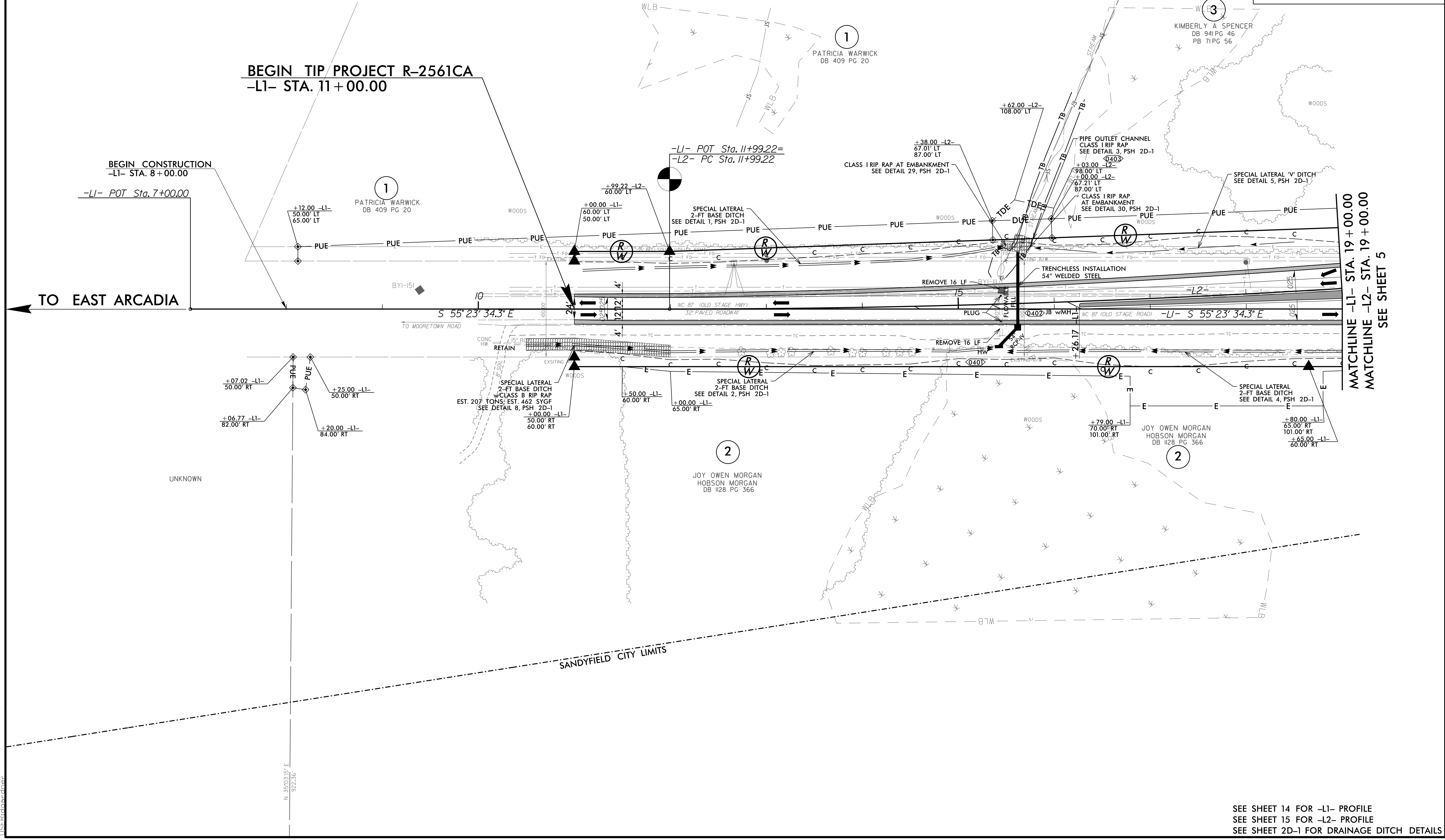


8/17/99
8/25/2002
R-2561CA_Rdy_psh_4.dgn
11:51:40 AM

-L2-	
PI Sta 16+07.83	PI Sta 24+24.70
$\Delta = 4' 04'' 11.5'' (LT)$	$\Delta = 4' 04'' 11.5'' (RT)$
$D = 0' 29'' 53.6''$	$D = 0' 29'' 53.6''$
$L = 816.87'$	$L = 816.87'$
$T = 408.6'$	$T = 408.6'$
$R = 11,500.00'$	$R = 11,500.00'$
SE = NC	SE = NC

SEPI
Engineering & Construction, Inc.
1 Glenwood Avenue
Raleigh, NC 27603
Tel: 919.789.9977
Fax: 919.789.9591
License: C-2197

PROJECT REFERENCE NO. R-2561CA	SHEET NO. 4
RW SHEET NO.	
ROADWAY DESIGN ENGINEER DANIEL W. GARDNER, JR. SEAL 033871 NORTH CAROLINA PROFESSIONAL ENGINEER	HYDRAULICS ENGINEER ANDREW M. HOWELL SEAL 035621 NORTH CAROLINA PROFESSIONAL ENGINEER
DOCUMENT NOT CONSIDERED FINAL UNLESS ALL SIGNATURES COMPLETED	



SEE SHEET 14 FOR -L1- PROFILE
SEE SHEET 15 FOR -L2- PROFILE
SEE SHEET 2D-1 FOR DRAINAGE DITCH DETAILS