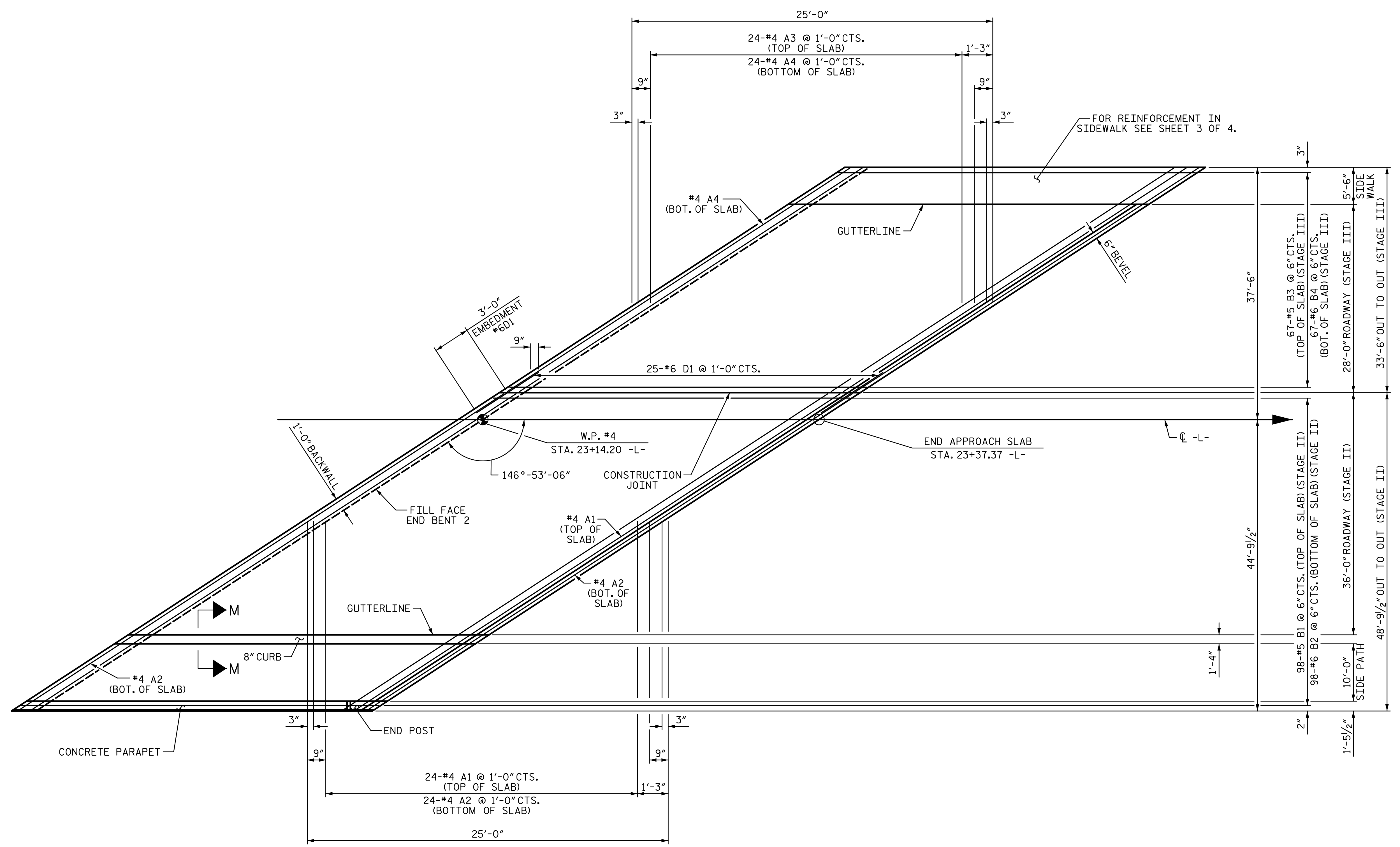
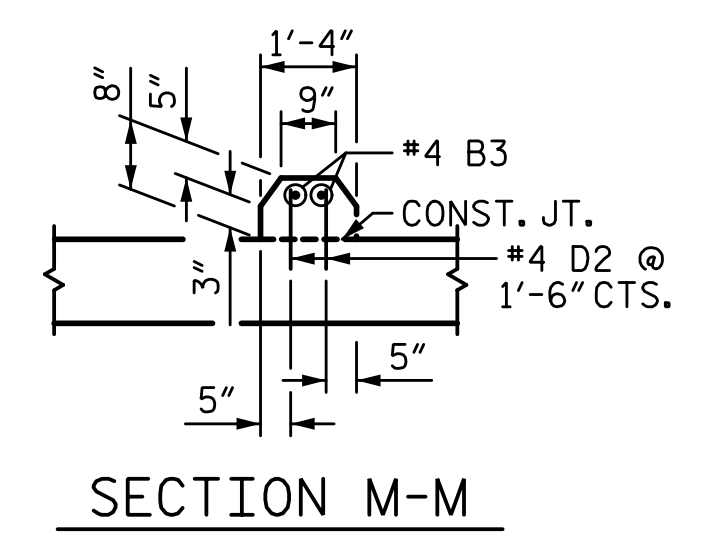


11/21/2022 10:19:14 AM P:\Raleigh\Projects\2018\Division 13 (SEA)\B-5869 (Burke 99)\Structures\Drawings\Final(2)\B5869_SMJ_AS_110099(2).dgn

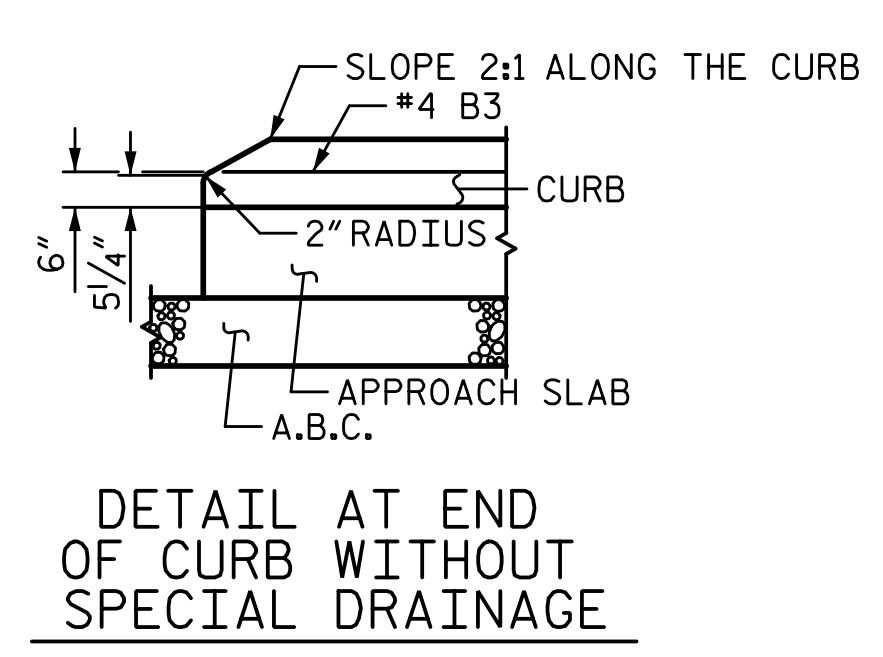


PLAN @ END BENT 2

A1 & A2 BARS ARE 3 BAR RUNS
A3 & A4 BARS ARE 2 BAR RUNS



SECTION M-M



DETAIL AT END OF CURB WITHOUT SPECIAL DRAINAGE

CURB DETAILS

NOTES:

FOR ADDITIONAL REINFORCING STEEL IN CONCRETE PARAPET, END POST AND APPROACH SLAB AND DIMENSIONS AND PAY ITEMS, SEE "CONCRETE PARAPET DETAILS" SHEETS.

FOR ADDITIONAL REINFORCING STEEL IN VERTICAL BARRIER RAIL AND APPROACH SLAB AND DIMENSIONS AND PAY ITEMS, SEE "VERTICAL BARRIER RAIL" SHEET.

#6 D1 DOWELS SHALL BE PLACED IN THE SAME HORIZONTAL PLANE AS THE TOP SLAB REINFORCING STEEL.

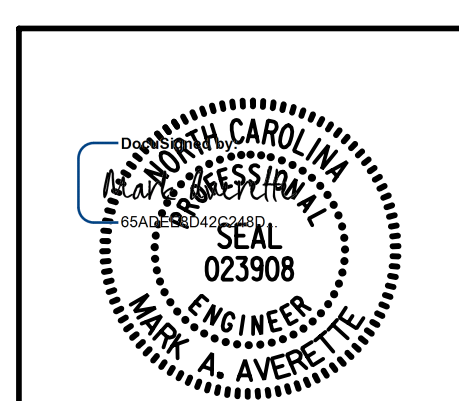
SEE "STRIP SEAL EXPANSION JOINT DETAILS FOR CONCRETE PARAPET" SHEETS FOR COVER PLATES AT END BENT.

PROJECT NO. B-5869
BURKE COUNTY
STATION: 21+62.39 -L-

SHEET 2 OF 4

STATE OF NORTH CAROLINA
DEPARTMENT OF TRANSPORTATION
RALEIGH

BRIDGE APPROACH SLAB



REVISIONS						SHEET NO.
NO.	BY:	DATE:	NO.	BY:	DATE:	S-70
1			3			TOTAL SHEETS
2			4			72

DRAWN BY: S.D. COOPER DATE: 3-2022
 CHECKED BY: M. AVERETTE DATE: 3-2022
 DESIGN ENGINEER OF RECORD: M. AVERETTE DATE: 3-2022

DOCUMENT NOT CONSIDERED FINAL
UNLESS ALL SIGNATURES COMPLETED