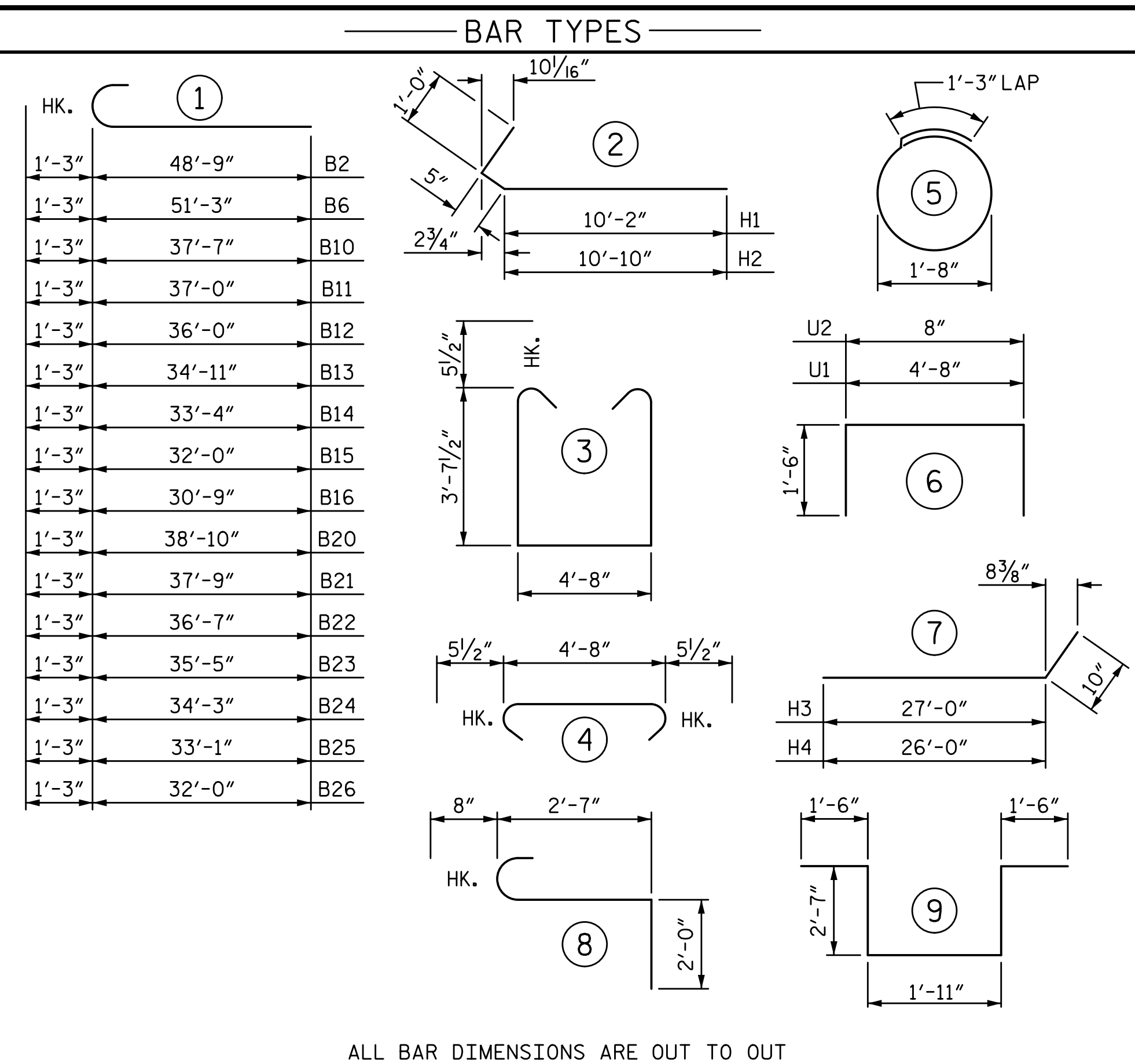
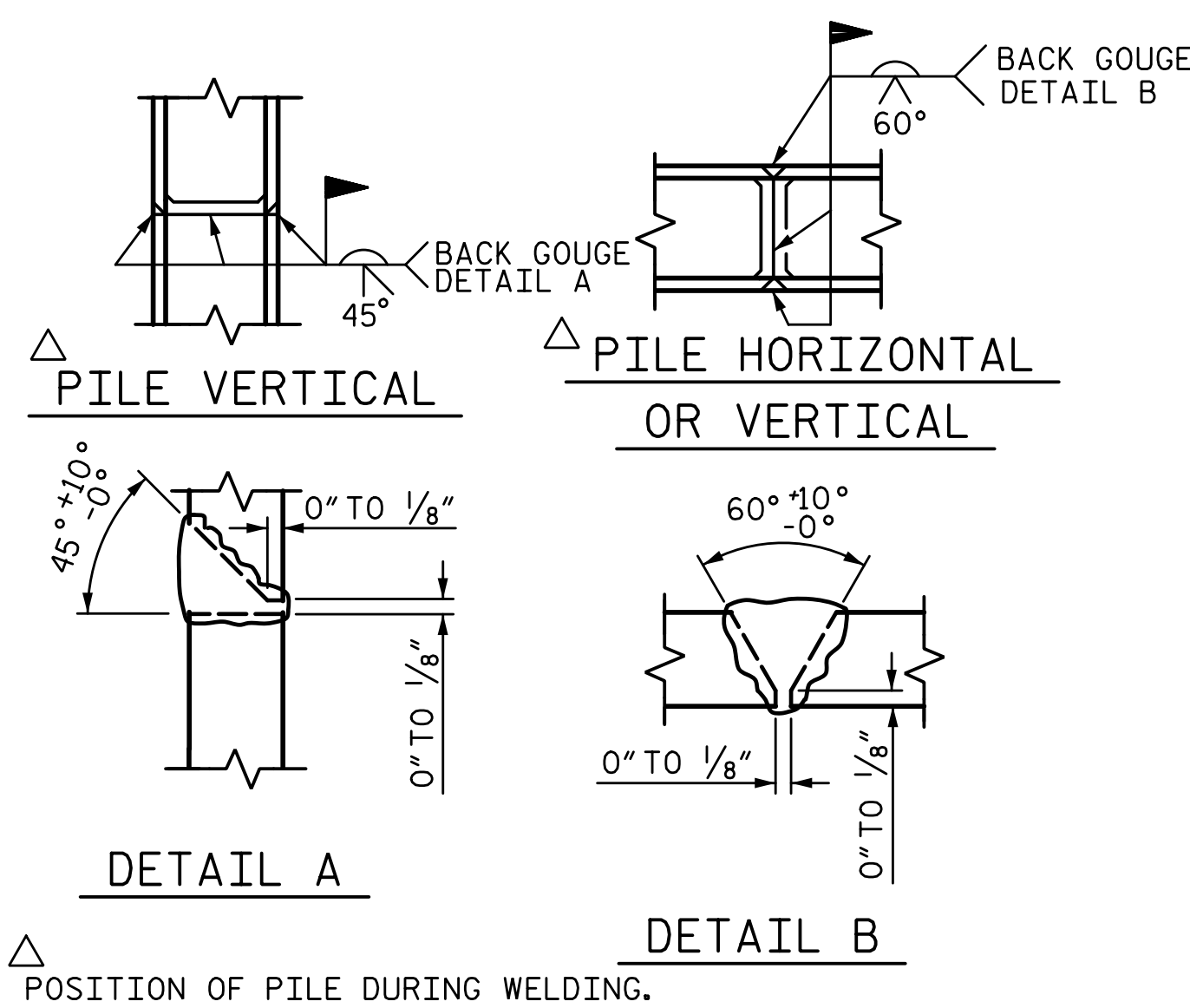
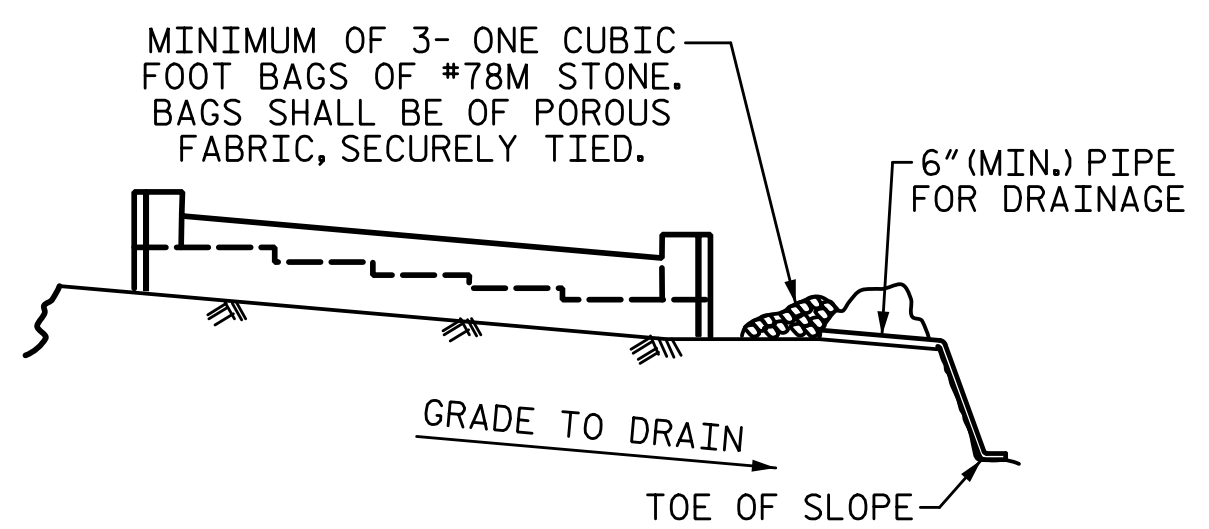
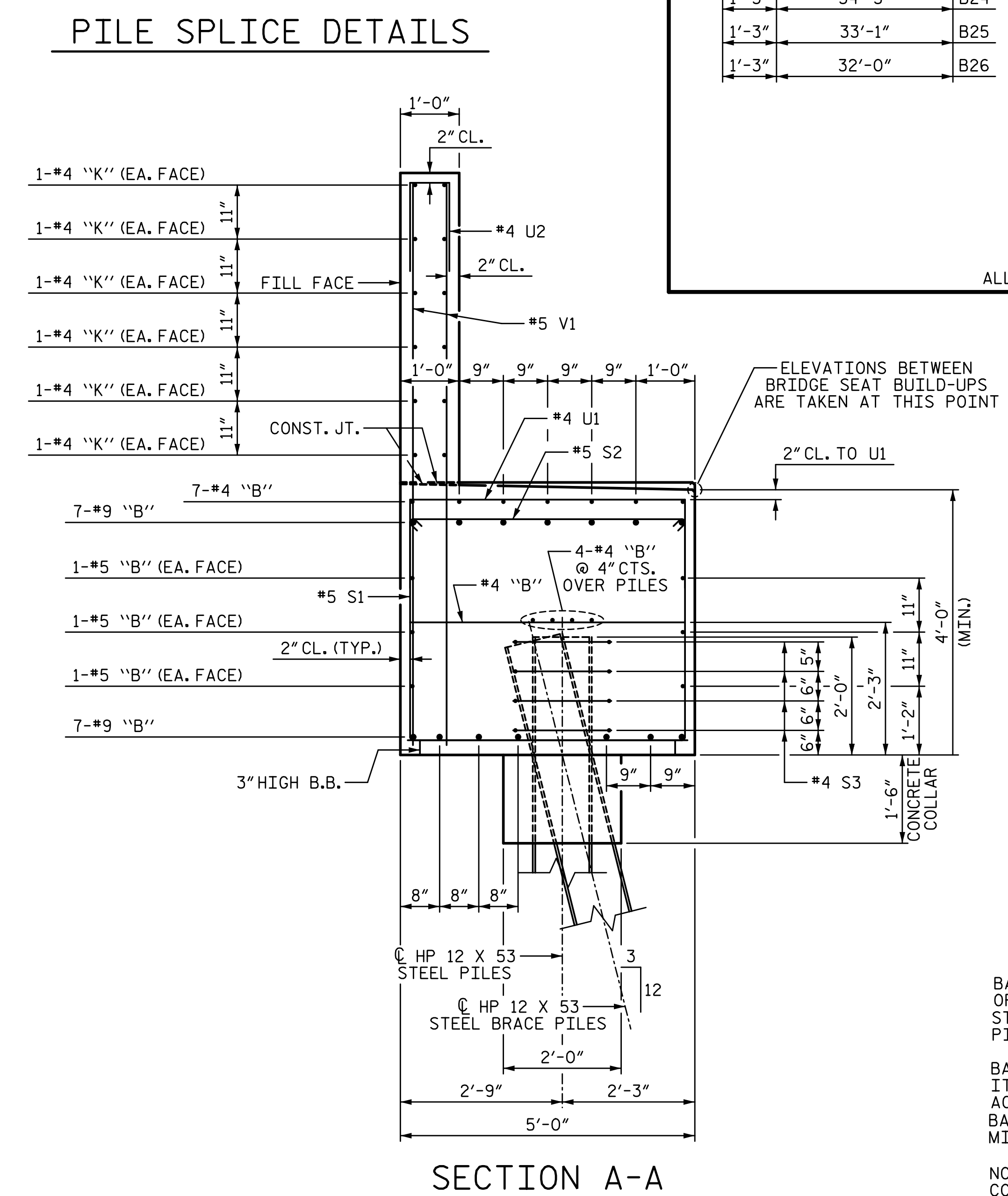


11/21/2022 10:19:11 AM P:\Raleigh\Projects\2018\Division 13 (SEA)\B-5869 (Burke 99)\Structures\Drawings\2\Final\2\B5869_SMU_E2_110099(2).dgn



BILL OF MATERIAL																	
END BENT 2																	
STAGE II								STAGE III									
BAR NO.	SIZE	TYPE	LENGTH	WEIGHT	BAR NO.	SIZE	TYPE	LENGTH	WEIGHT	BAR NO.	SIZE	TYPE	LENGTH	WEIGHT			
B1	14	#9	STR	55'-0"	2618	B5	16	#4	STR	4'-8"	50	S2	58	#5	4	5'-7"	338
B2	7	#9	1	50'-0"	1190	B10	1	#9	1	38'-10"	132	S3	28	#4	5	6'-6"	122
B3	12	#5	STR	50'-11"	637	B11	1	#9	1	38'-3"	130	S4	3	#6	8	5'-3"	24
B4	12	#4	STR	34'-5"	276	B12	1	#9	1	37'-3"	127	S5	3	#6	9	10'-1"	45
B5	24	#4	STR	4'-8"	75	B13	1	#9	1	36'-2"	123						
B6	7	#9	1	52'-6"	1250	B14	1	#9	1	34'-7"	118	U1	38	#4	6	7'-8"	195
B7	7	#4	STR	9'-7"	45	B15	1	#9	1	38'-3"	130	U2	60	#4	6	3'-8"	147
B8	28	#4	STR	15'-5"	288	B16	1	#9	1	32'-0"	109						
B9	7	#4	STR	22'-9"	106	B17	14	#9	STR	35'-0"	1666	V1	120	#5	STR	9'-5"	1179
						B18	12	#5	STR	36'-1"	452	V3	69	#5	STR	11'-8"	840
H1	24	#5	2	11'-7"	290	B19	8	#4	STR	34'-0"	182	TOTAL REINFORCING STEEL				9597 LB	
H2	24	#5	2	12'-3"	307	B20	1	#9	1	40'-1"	136	CLASS "A" CONCRETE BREAKDOWN					
						B21	1	#9	1	39'-0"	133	POUR 1				55.6 CY	
K1	36	#4	STR	34'-5"	828	B22	1	#9	1	37'-10"	129	(CAP, COLLARS & LOWER WING)					
K2	2	#4	STR	4'-3"	6	B23	1	#9	1	36'-8"	125	POUR 2				23.3 CY	
K3	2	#4	STR	4'-5"	6	B24	1	#9	1	35'-6"	121	(UPPER WING & BACKWALL)					
						B25	1	#9	1	34'-4"	117	TOTAL				78.9 CY	
S1	87	#5	3	12'-10"	1165	B26	1	#9	1	33'-3"	113	HP 12 X 53 STEEL PILES					
S2	87	#5	4	5'-7"	507	B27	1	#4	STR	18'-0"	12	NO. 7				315 LF	
S3	40	#4	5	6'-6"	174	B28	1	#4	STR	16'-10"	11	PILE DRIVING EQUIPMENT SETUP					
						B29	1	#4	STR	15'-9"	11	HP 12 X 53 STEEL PILES					
U1	67	#4	6	7'-8"	343	B30	1	#4	STR	14'-7"	10	NO. 7				315 LF	
U2	90	#4	6	3'-8"	220	B31	1	#4	STR	13'-5"	9	PILE DRIVING EQUIPMENT SETUP					
						B32	1	#4	STR	12'-3"	8	HP 12 X 53 STEEL PILES					
V1	180	#5	STR	9'-5"	1768	B33	1	#4	STR	11'-2"	7	NO. 11				630 LF	
V2	31	#5	STR	11'-1"	358	B34	21	#4	STR	14'-8"	206	PILE DRIVING EQUIPMENT SETUP					
												HP 12 X 53 STEEL PILES				11 EA	
TOTAL REINFORCING STEEL				12457 LB		H3	17	#5	7	27'-10"	494						
						H4	17	#5	7	26'-10"	476						
CLASS "A" CONCRETE BREAKDOWN																	
POUR 1 (CAP, COLLARS & LOWER WING) 34.6 CY																	
POUR 2 (CAP & COLLARS) 45.1 CY																	
POUR 3 (UPPER WING & BACKWALL) 22.2 CY																	
TOTAL 101.9 CY																	



BAGGED STONE AND PIPE SHALL BE PLACED IMMEDIATELY AFTER COMPLETION OF END BENT EXCAVATION. PIPE MAY BE EITHER CONCRETE, CORRUGATED STEEL, CORRUGATED ALUMINUM ALLOY, OR CORRUGATED PLASTIC. PERFORATED PIPE WILL NOT BE ALLOWED.

BAGGED STONE SHALL REMAIN IN PLACE UNTIL THE ENGINEER DIRECTS THAT IT BE REMOVED. THE CONTRACTOR SHALL REMOVE AND DISPOSE OF SILT ACCUMULATIONS AT BAGGED STONE WHEN SO DIRECTED BY THE ENGINEER. BAGS SHALL BE REMOVED AND REPLACED WHENEVER THE ENGINEER DETERMINES THAT THEY HAVE DETERIORATED AND LOST THEIR EFFECTIVENESS.

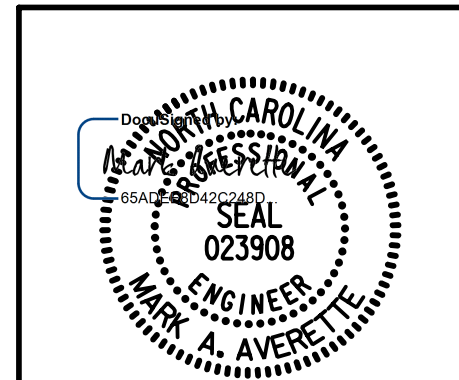
NO SEPARATE PAYMENT WILL BE MADE FOR THIS WORK AND THE ENTIRE COST OF THIS WORK SHALL BE INCLUDED IN THE UNIT CONTRACT PRICE BID FOR THE SEVERAL PAY ITEMS.

TEMPORARY DRAINAGE AT END BENT

PROJECT NO. B-5869
 BURKE COUNTY
 STATION: 21+62.39 -L-

SHEET 5 OF 5

STATE OF NORTH CAROLINA
 DEPARTMENT OF TRANSPORTATION
 RALEIGH
 SUBSTRUCTURE
 END BENT 2



DRAWN BY: S.D. COOPER DATE: 3-2022
 CHECKED BY: M. AVERETTE DATE: 3-2022
 DESIGN ENGINEER OF RECORD: M. AVERETTE DATE: 3-2022

REVISIONS				SHEET NO.	
NO.	BY:	DATE:	NO.	BY:	DATE:
1			3		
2			4		

DOCUMENT NOT CONSIDERED FINAL UNLESS ALL SIGNATURES COMPLETED

TOTAL SHEETS 72