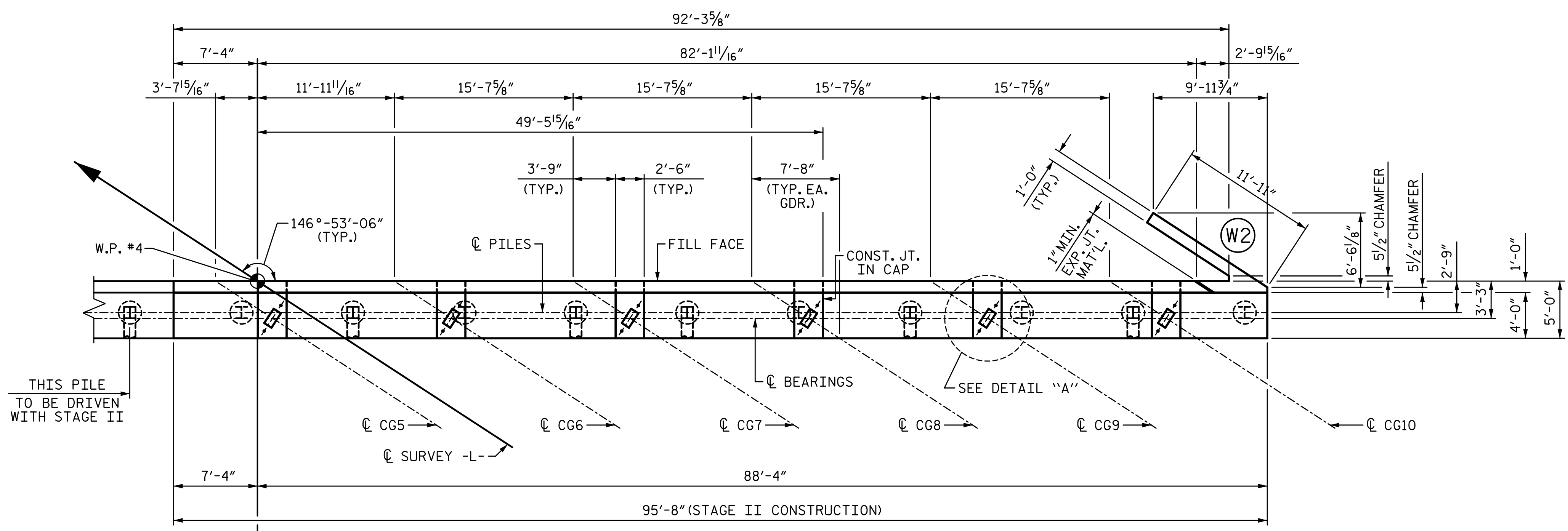


11/21/2022 10:19:09 AM P:\Raleigh\Projects\2018\Division 13 (SEA)\B-5869 (Burke 99)\Structures\Drawings\2\Final\2\B5869\_SMU\_E2\_110099(2).dgn



**PLAN**

**NOTES:**

STIRRUPS AND "U" BARS IN CAP MAY BE SHIFTED AS NECESSARY TO CLEAR ANCHOR BOLTS.

FOR SECTION A-A, SEE SHEET 5 OF 5.

FOR LOCATION OF ELEVATIONS BETWEEN BRIDGE SEAT BUILD-UPS SEE SECTION A-A, SEE SHEET 5 OF 5.

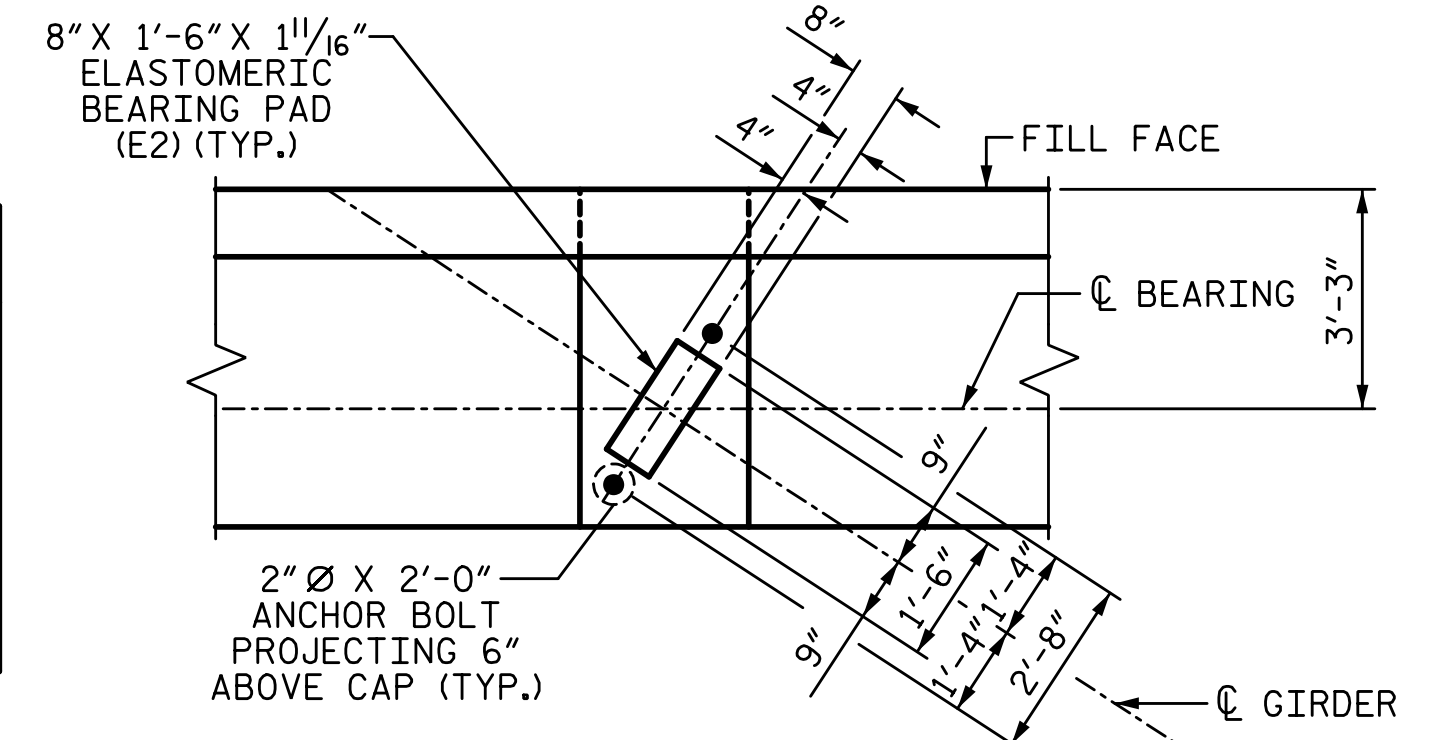
BACKWALL SHALL BE PLACED BEFORE APPLYING THE EPOXY PROTECTIVE COATING.

THE TOP SURFACE AREAS OF THE END BENT CAPS SHALL BE CURED IN ACCORDANCE WITH THE STANDARD SPECIFICATIONS EXCEPT THE MEMBRANE CURING COMPOUND METHOD SHALL NOT BE USED.

THE TOP SURFACE OF THE CAP EXCEPT THE BRIDGE SEAT BUILDUPS SHALL BE SLOPED TRANSVERSELY FROM THE FILL FACE TO THE BACK FACE AT THE RATE OF 2%.

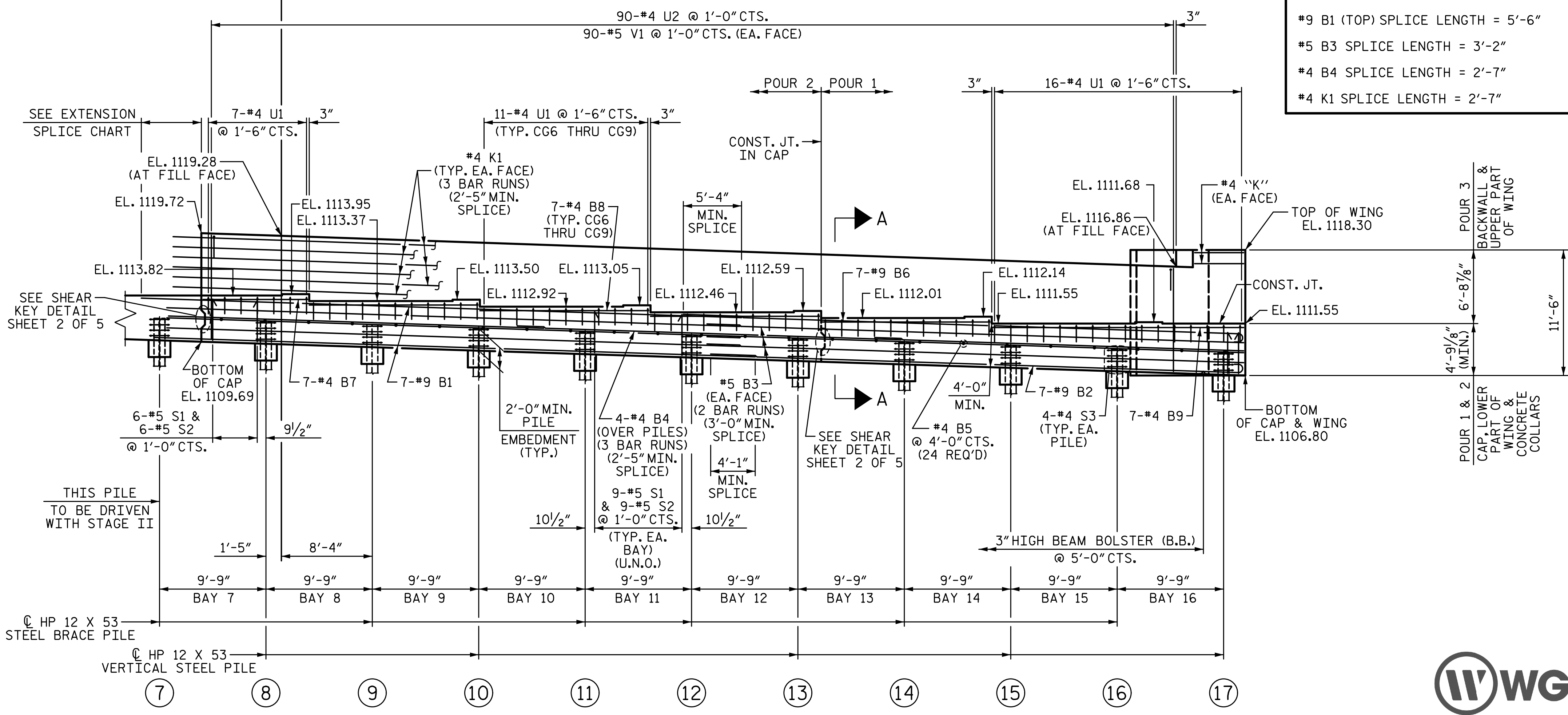
SEE GENERAL DRAWING "FOUNDATION LAYOUT" FOR ADDITIONAL NOTES FOR DRIVING PILES.

EXTENSION SPLICE CHART	
#9 B1 (BOTTOM) SPLICE LENGTH = 4'-3"	
#9 B1 (TOP) SPLICE LENGTH = 5'-6"	
#5 B3 SPLICE LENGTH = 3'-2"	
#4 B4 SPLICE LENGTH = 2'-7"	
#4 K1 SPLICE LENGTH = 2'-7"	



**DETAIL "A"**  
(TYP. EA. GIRDER)

TOP OF PILE ELEVATIONS			
PILE	ELEVATION	PILE	ELEVATION
7	1111.81	13	1110.04
8	1111.51	14	1109.74
9	1111.22	15	1109.45
10	1110.92	16	1109.15
11	1110.63	17	1108.86
12	1110.33		



**ELEVATION**

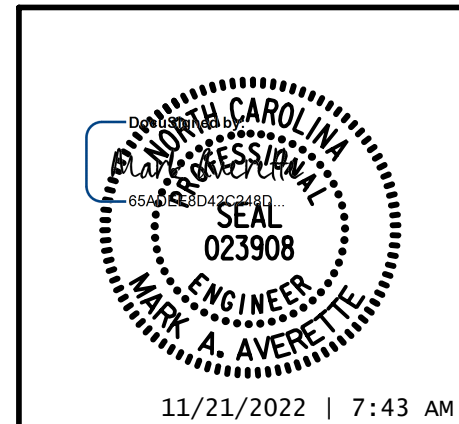
PROJECT NO. B-5869  
BURKE COUNTY  
 STATION: 21+62.39 -L-

SHEET 1 OF 5

STATE OF NORTH CAROLINA  
 DEPARTMENT OF TRANSPORTATION  
 RALEIGH  
 SUBSTRUCTURE

**END BENT 2**

**STAGE II**



DRAWN BY: S.D. COOPER DATE: 3-2022  
 CHECKED BY: M. AVERETTE DATE: 3-2022  
 DESIGN ENGINEER OF RECORD: M. AVERETTE DATE: 3-2022

U.N.O. = UNLESS NOTED OTHERWISE

REVISIONS				SHEET NO.	
NO.	BY:	DATE:	NO.	BY:	DATE:
1			3		
2			4		

DOCUMENT NOT CONSIDERED FINAL  
 UNLESS ALL SIGNATURES COMPLETED