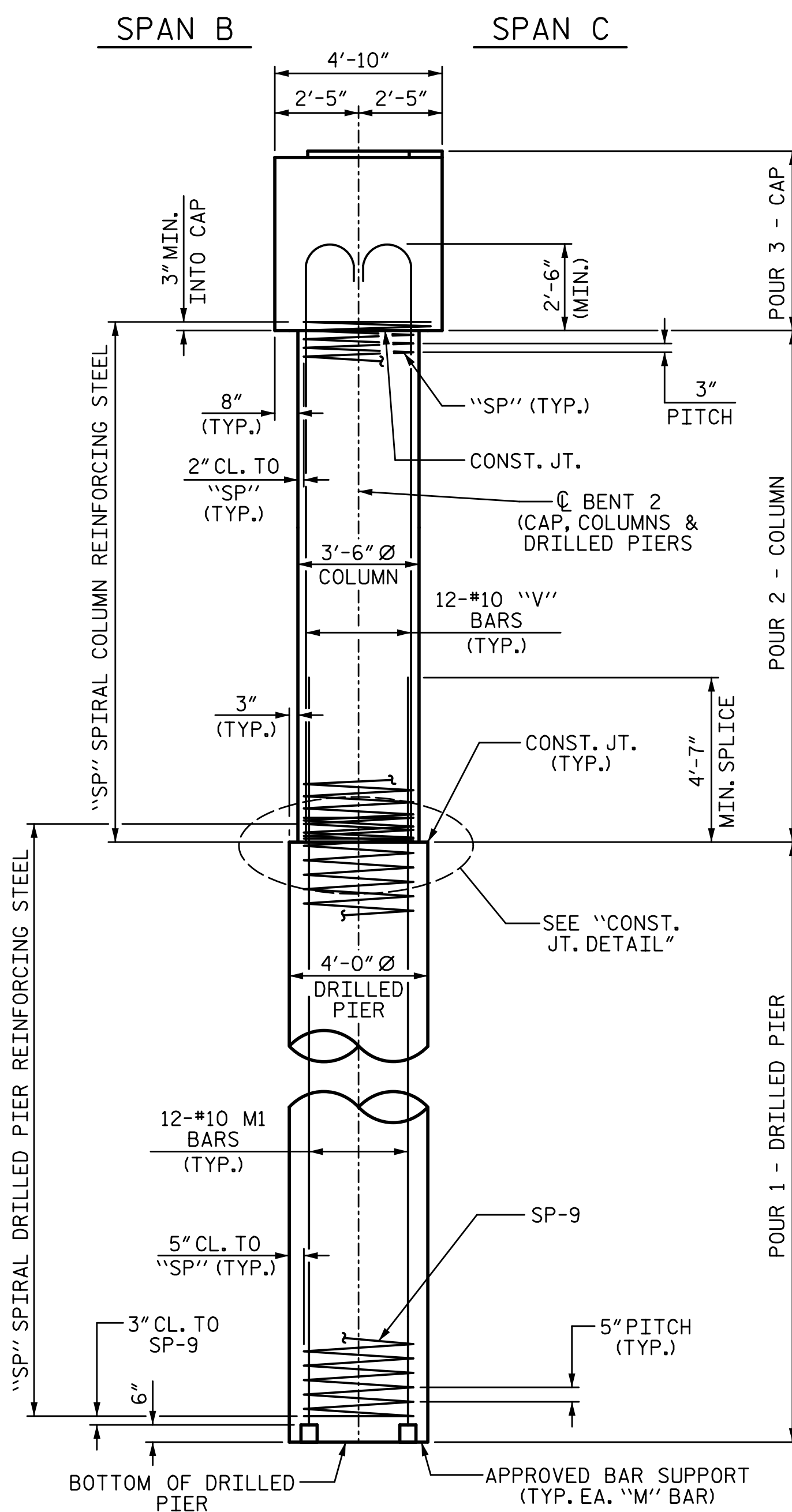
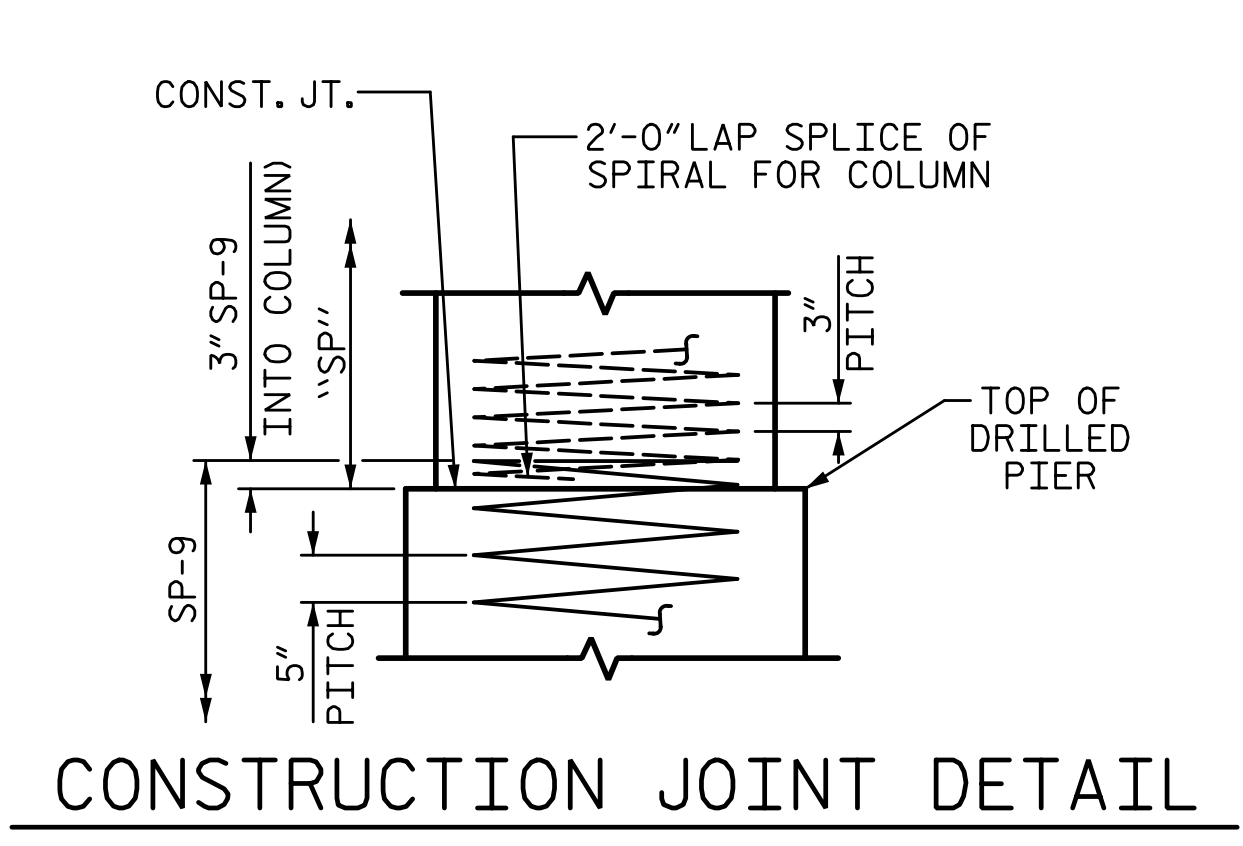


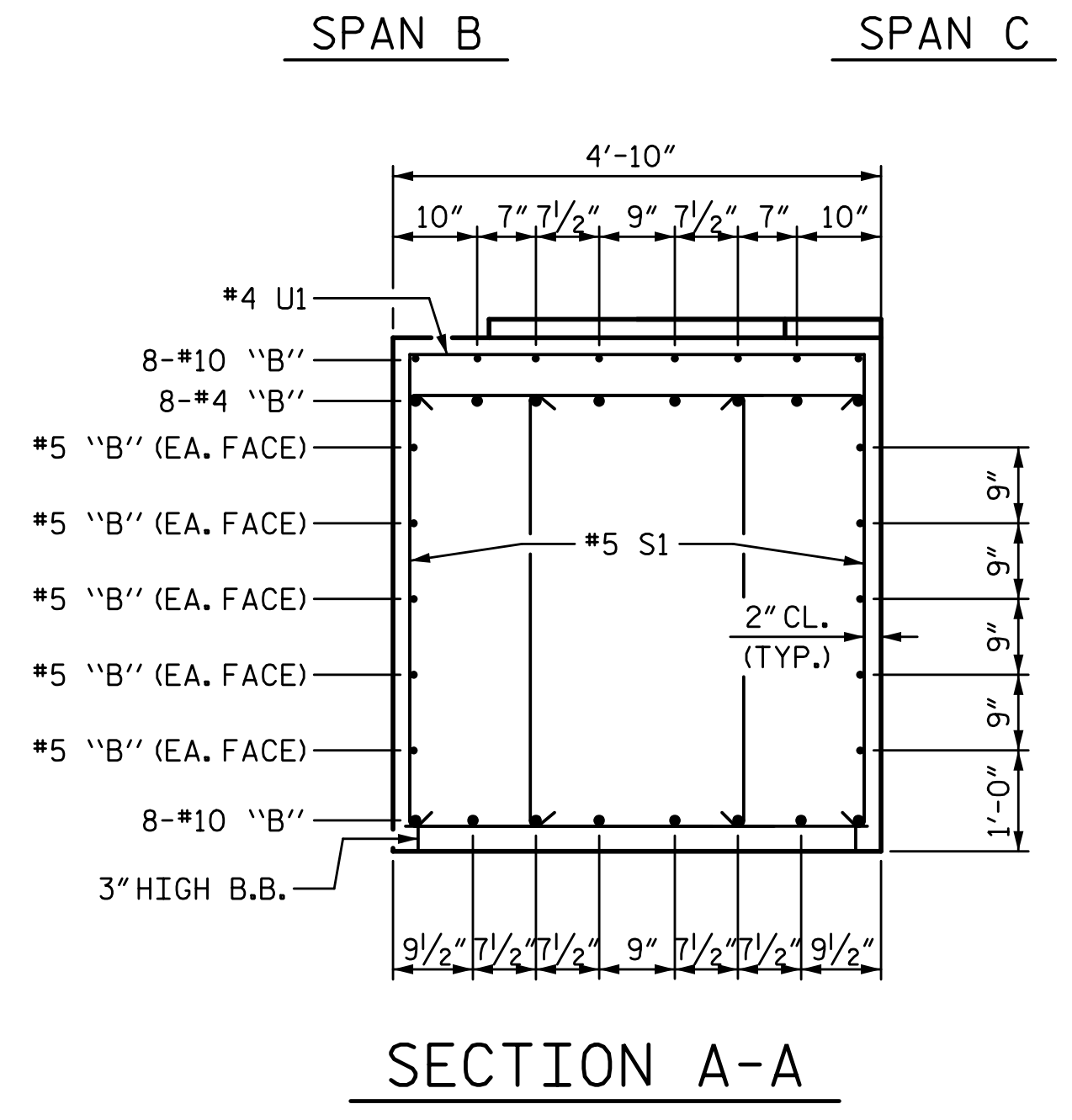
11/21/2022 10:19:08 AM P:\Rateigh\Projects\2018\Division 13 (SEA)\B-5869 (Burke 99)\Structures\Drawings\2\Final\2\B5869\_SMU\_B2\_110099(2).dgn



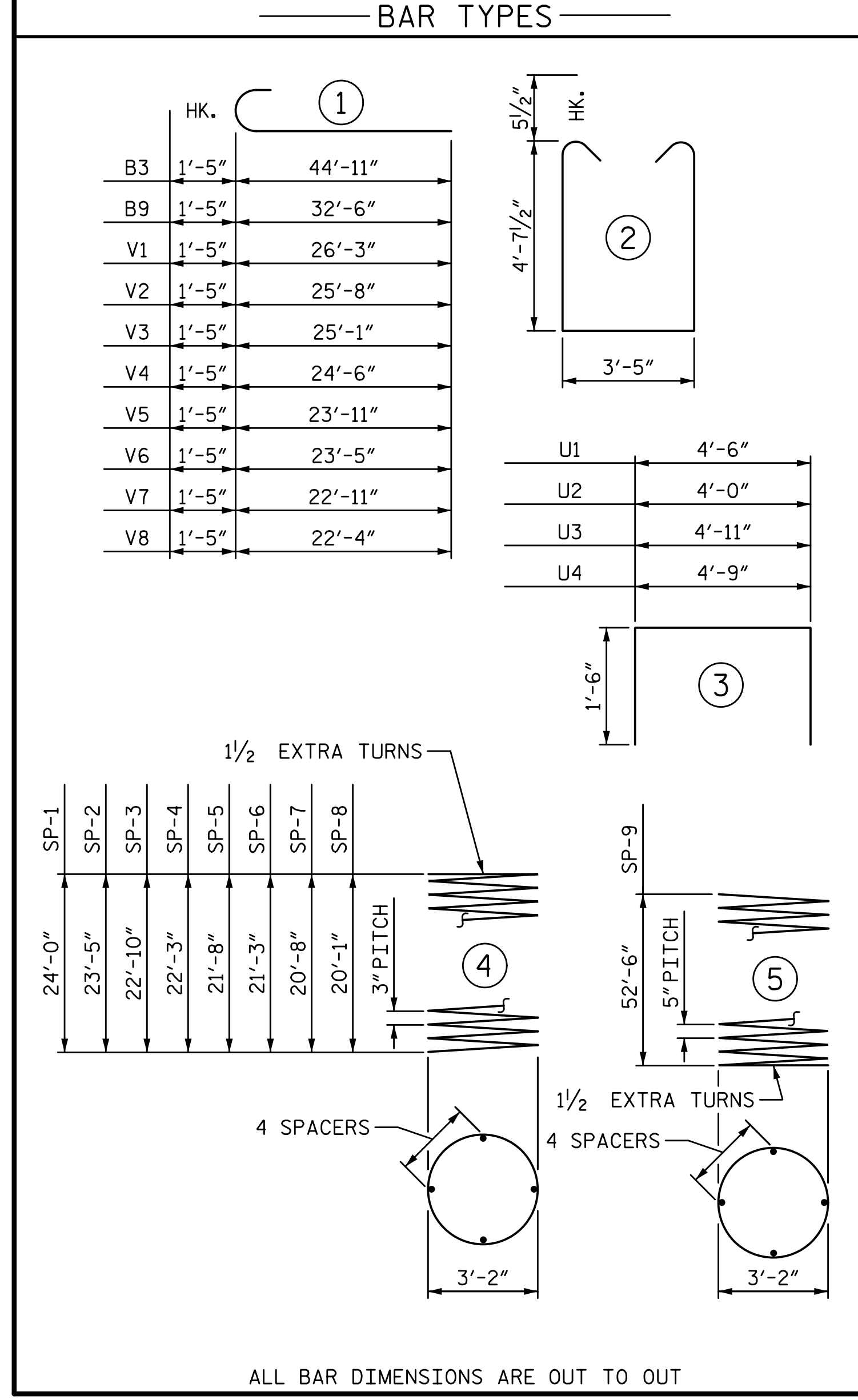
END ELEVATION



CONSTRUCTION JOINT DETAIL

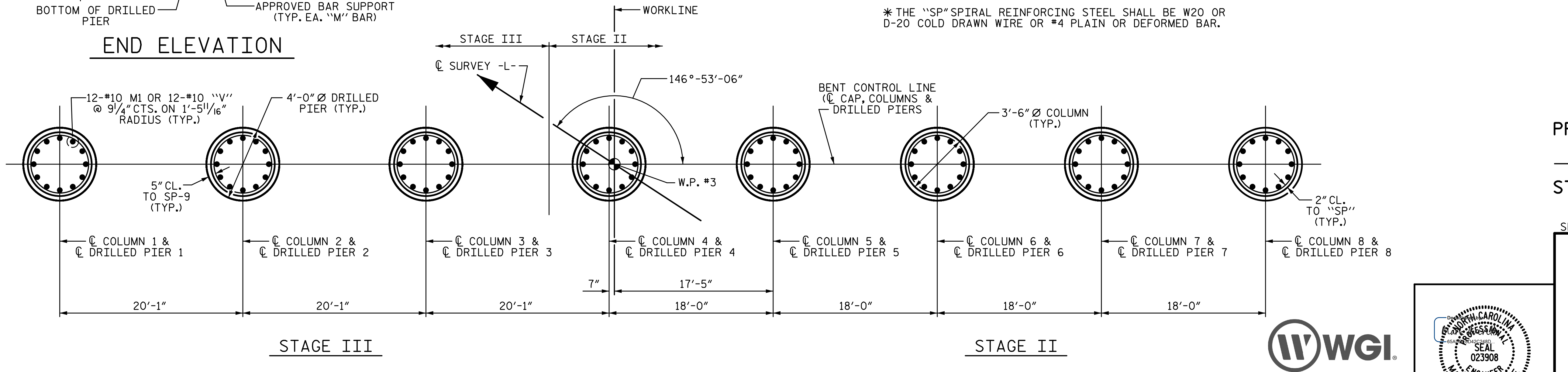


SECTION A-A



ALL BAR DIMENSIONS ARE OUT TO OUT  
 \* THE SP-9 SPIRAL REINFORCING STEEL SHALL BE W31 OR D-31 COLD DRAWN WIRE OR #5 PLAIN OR DEFORMED BAR.  
 \* THE SP SPIRAL REINFORCING STEEL SHALL BE W20 OR D-20 COLD DRAWN WIRE OR #4 PLAIN OR DEFORMED BAR.

BILL OF MATERIAL BENT 2 - STAGE II						BILL OF MATERIAL BENT 2 - STAGE III					
BAR	NO.	SIZE	TYPE	LENGTH	WEIGHT	BAR	NO.	SIZE	TYPE	LENGTH	WEIGHT
B1	16	#10	STR	46'-8"	3213	B6	8	#10	STR	59'-0"	2031
B2	20	#5	STR	45'-1"	940	B7	20	#5	STR	31'-0"	647
B3	8	#10	1	46'-4"	1595	B8	8	#10	STR	32'-6"	1119
B4	8	#10	STR	51'-3"	1764	B9	8	#10	1	33'-11"	1168
B5	48	#4	STR	15'-3"	489	B10	24	#4	STR	14'-6"	232
						B11	8	#4	STR	4'-5"	24
M1	60	#10	STR	60'-0"	15491	M1	36	#10	STR	60'-0"	9294
S1	202	#5	2	13'-7"	2862	S1	148	#5	2	13'-7"	2097
U1	94	#4	3	7'-6"	471	U1	64	#4	3	7'-6"	321
U2	5	#4	3	7'-0"	23	U2	5	#4	3	7'-0"	23
U3	4	#4	3	7'-11"	21	U4	4	#4	3	7'-9"	21
V4	12	#10	1	25'-11"	1338	V4	12	#10	1	27'-8"	1429
V5	12	#10	1	25'-4"	1308	V5	12	#10	1	27'-1"	1398
V6	12	#10	1	24'-10"	1282	V6	12	#10	1	26'-6"	1368
V7	12	#10	1	24'-4"	1256	V7	12	#10	1	26'-6"	1368
V8	12	#10	1	23'-9"	1226	V8	12	#10	1	23'-9"	1226
SP-4	1	*	4	893'-9"	597	SP-1	1	*	4	962'-6"	643
SP-5	1	*	4	874'-1"	584	SP-2	1	*	4	942'-10"	630
SP-6	1	*	4	854'-5"	571	SP-3	1	*	4	913'-4"	610
SP-7	1	*	4	834'-10"	558	SP-9	3	**	5	1253'-7"	3922
SP-8	1	*	4	805'-4"	538						
SP-9	5	**	5	1253'-7"	6537						
REINFORCING STEEL						REINFORCING STEEL					
33279 LB						21172 LB					
SPIRAL COL. REINF. STEEL						SPIRAL COL. REINF. STEEL					
9385 LB						5805 LB					
CLASS "A" CONCRETE BREAKDOWN						CLASS "A" CONCRETE BREAKDOWN					
POUR 2 (COLUMNS)						POUR 2 (COLUMNS)					
37.3 CY						24.8 CY					
POUR 3 (CAP)						POUR 3 (CAP)					
80.3 CY						60.2 CY					
TOTAL						TOTAL					
117.6 CY						85.0 CY					
DRILLED PIERS:						DRILLED PIERS:					
DRILLED PIER CONCRETE POUR 1 (DRILLED PIERS)						DRILLED PIER CONCRETE POUR 1 (DRILLED PIERS)					
123.2 CY						73.9 CY					
4'-0" DRILLED PIER NOT IN SOIL						4'-0" DRILLED PIER NOT IN SOIL					
57.5 LF						34.5 LF					
4'-0" DRILLED PIER IN SOIL						4'-0" DRILLED PIER IN SOIL					
207.1 LF						124.3 LF					
CSL TUBES						CSL TUBES					
1088.3 LF						653.0 LF					



PLAN OF DRILLED PIERS AND COLUMNS

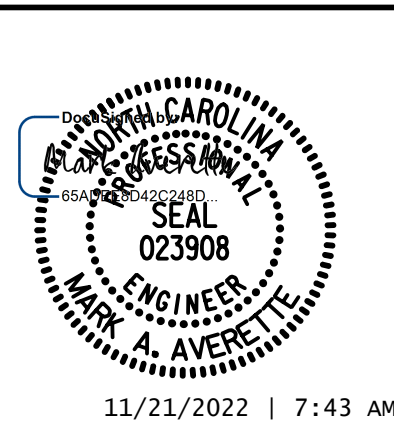
PROJECT NO. B-5869  
 BURKE COUNTY  
 STATION: 21+62.39 -L-

SHEET 3 OF 3

STATE OF NORTH CAROLINA  
 DEPARTMENT OF TRANSPORTATION  
 RALEIGH  
 SUBSTRUCTURE

**BENT 2**

STAGE II & III



DRAWN BY: S.D. COOPER DATE: 3-2022  
 CHECKED BY: M. AVERETTE DATE: 3-2022  
 DESIGN ENGINEER OF RECORD: M. AVERETTE DATE: 3-2022

REVISIONS		SHEET NO.	
NO.	DATE	BY	DATE
1		3	
2		4	

DOCUMENT NOT CONSIDERED FINAL UNLESS ALL SIGNATURES COMPLETED