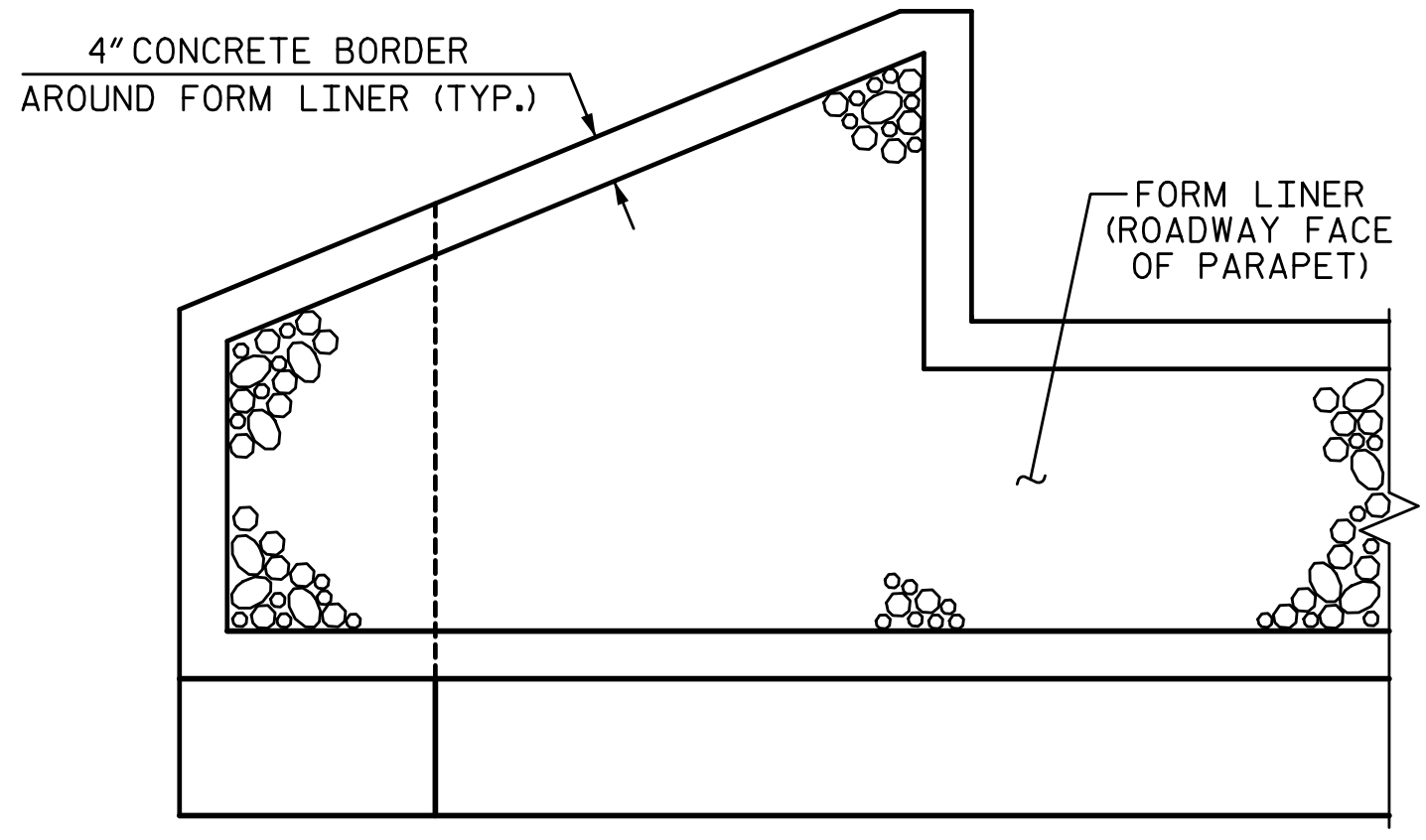
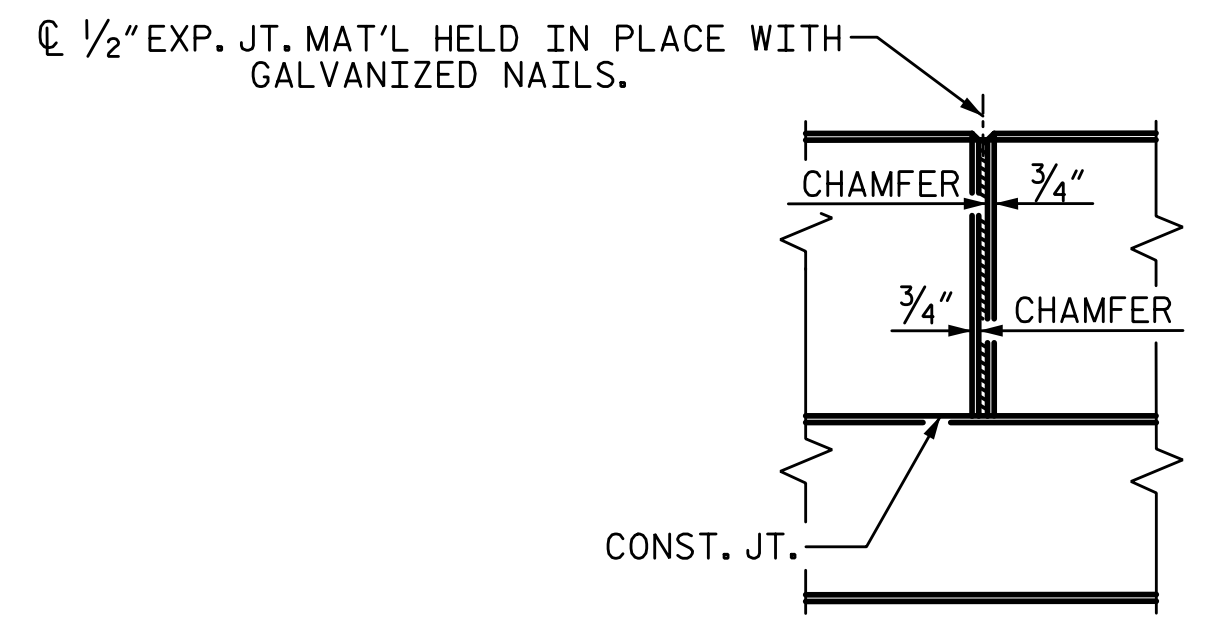


3/23/2023 8:06:59 AM P:\Railign\Projects\2018\Division 13 (SEA)\B-5869 (Burke 99)\Structures\Drawings\NF\Incl(2)\B5869_SMU_BR_110099(2).dgn



FORM LINER DETAIL

FOR LOCATION OF GUARDRAIL CONNECTION AND AREA WITH NO FORM LINER SEE "GUARDRAIL ANCHORAGE DETAILS" SHEET



ELEVATION AT EXPANSION JOINTS

NOTES:

CONCRETE PARAPET IN A CONTINUOUS UNIT SHALL NOT BE CAST UNTIL ALL SLAB CONCRETE IN THE UNIT HAS BEEN CAST AND HAS REACHED A MINIMUM COMPRESSIVE STRENGTH OF 3,000 PSI.

ALL REINFORCING STEEL IN PARAPET AND END POSTS SHALL BE EPOXY COATED.

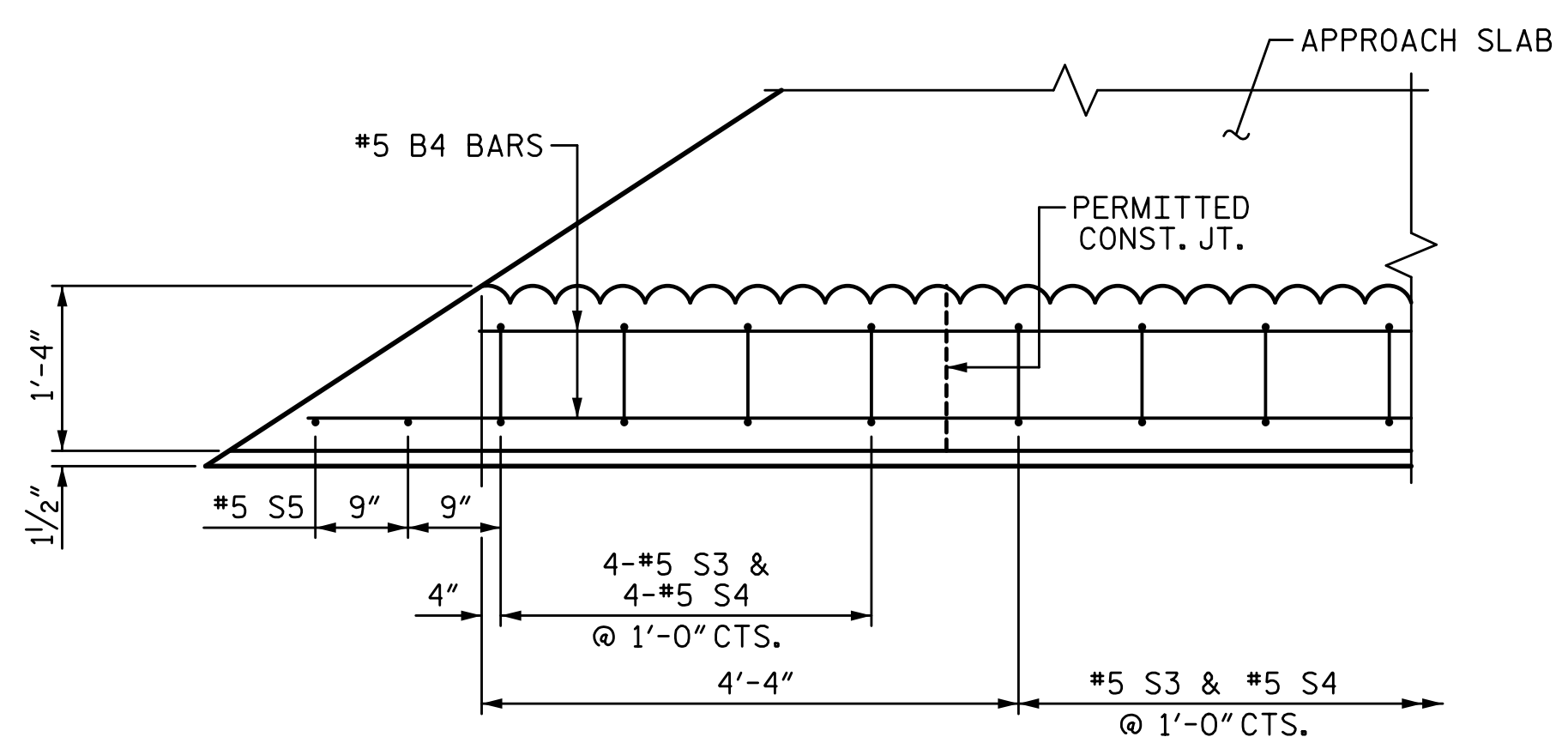
FOR DETAILS OF CONCRETE INSERTS IN END POSTS, SEE "RAIL POST SPACINGS AND END OF RAIL DETAILS" SHEET.

GROOVED CONTRACTION JOINTS, 1/2" IN DEPTH, SHALL BE TOOLED IN EXTERIOR FACE AND TOP SURFACE OF THE PARAPET AND IN ACCORDANCE WITH ARTICLE 825-10(B) OF THE STANDARD SPECIFICATIONS. A CONTRACTION JOINT SHALL BE LOCATED AT EACH THIRD POINT BETWEEN PARAPET EXPANSION JOINTS. ONLY ONE CONTRACTION JOINT IS REQUIRED AT MIDPOINT OF PARAPET SEGMENTS LESS THAN 20 FEET IN LENGTH AND NO CONTRACTION JOINTS ARE REQUIRED FOR THOSE SEGMENTS LESS THAN 10 FEET IN LENGTH.

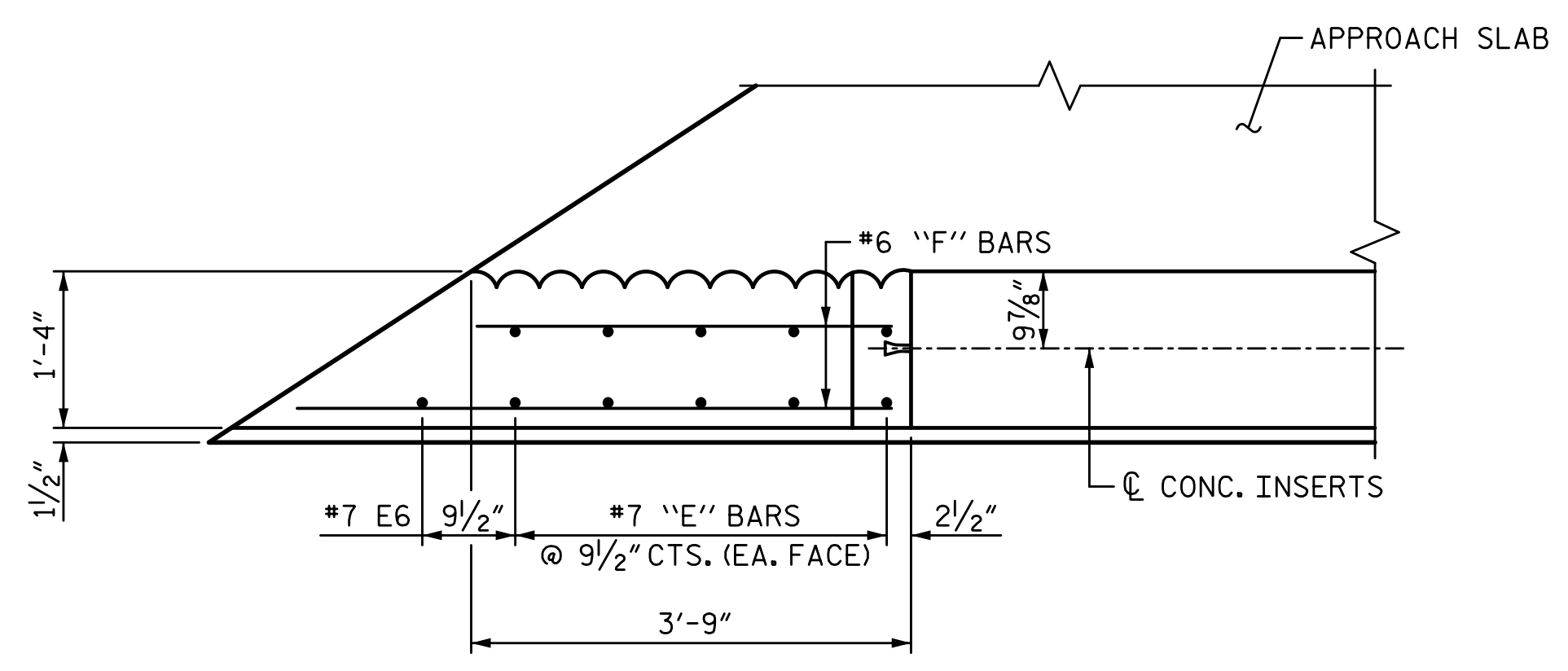
FOR ARCHITECTURAL CONCRETE SURFACE TREATMENT, SEE SPECIAL PROVISIONS.

FOR APPLICATION OF BRIDGE COATING, SEE SPECIAL PROVISIONS.

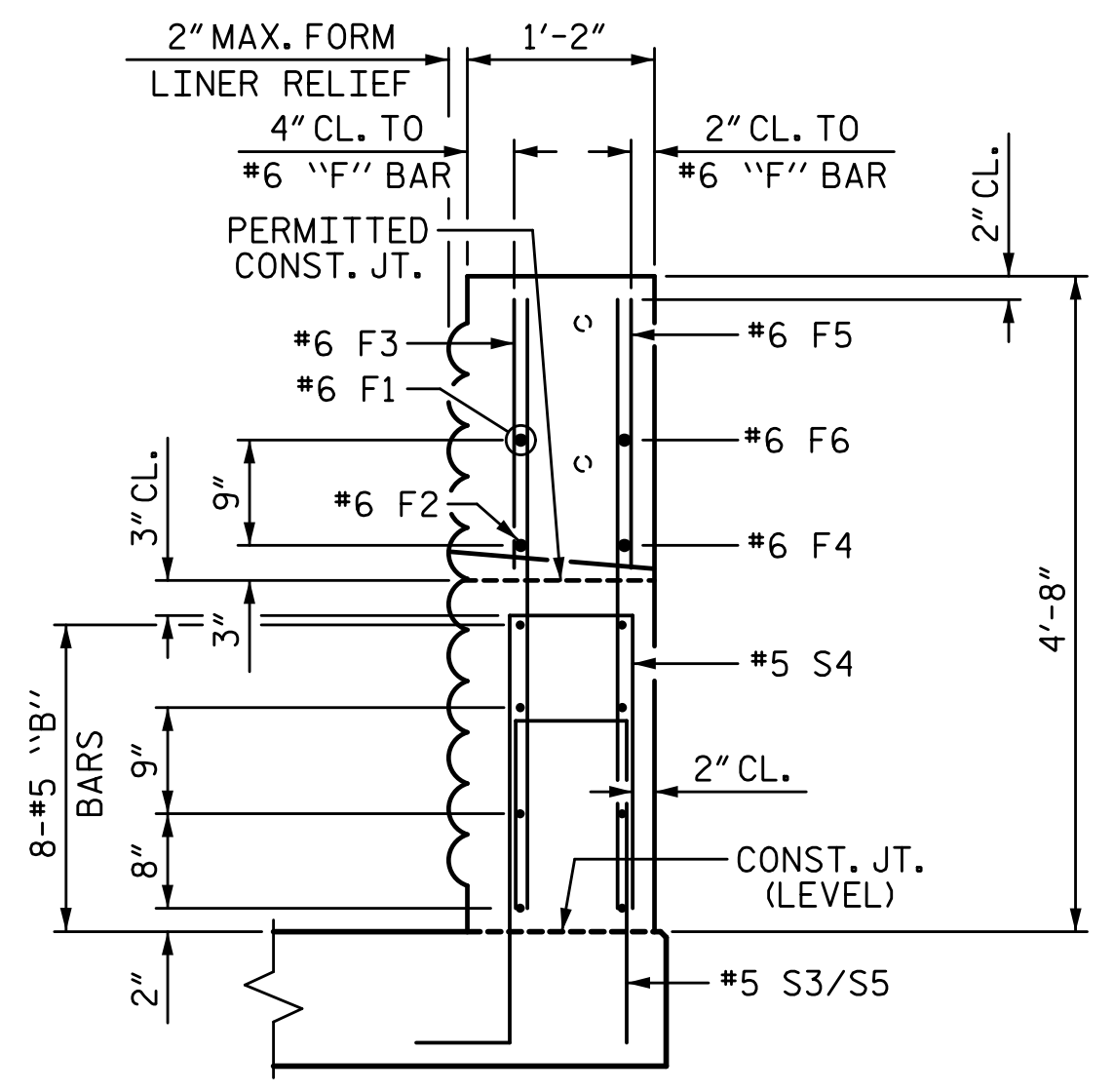
THE COST OF THE FORM LINERS AND SPECIAL SURFACE FINISH ARE INCLUDED IN LUMP SUM PRICE BID FOR ARCHITECTURAL SURFACE TREATMENT.



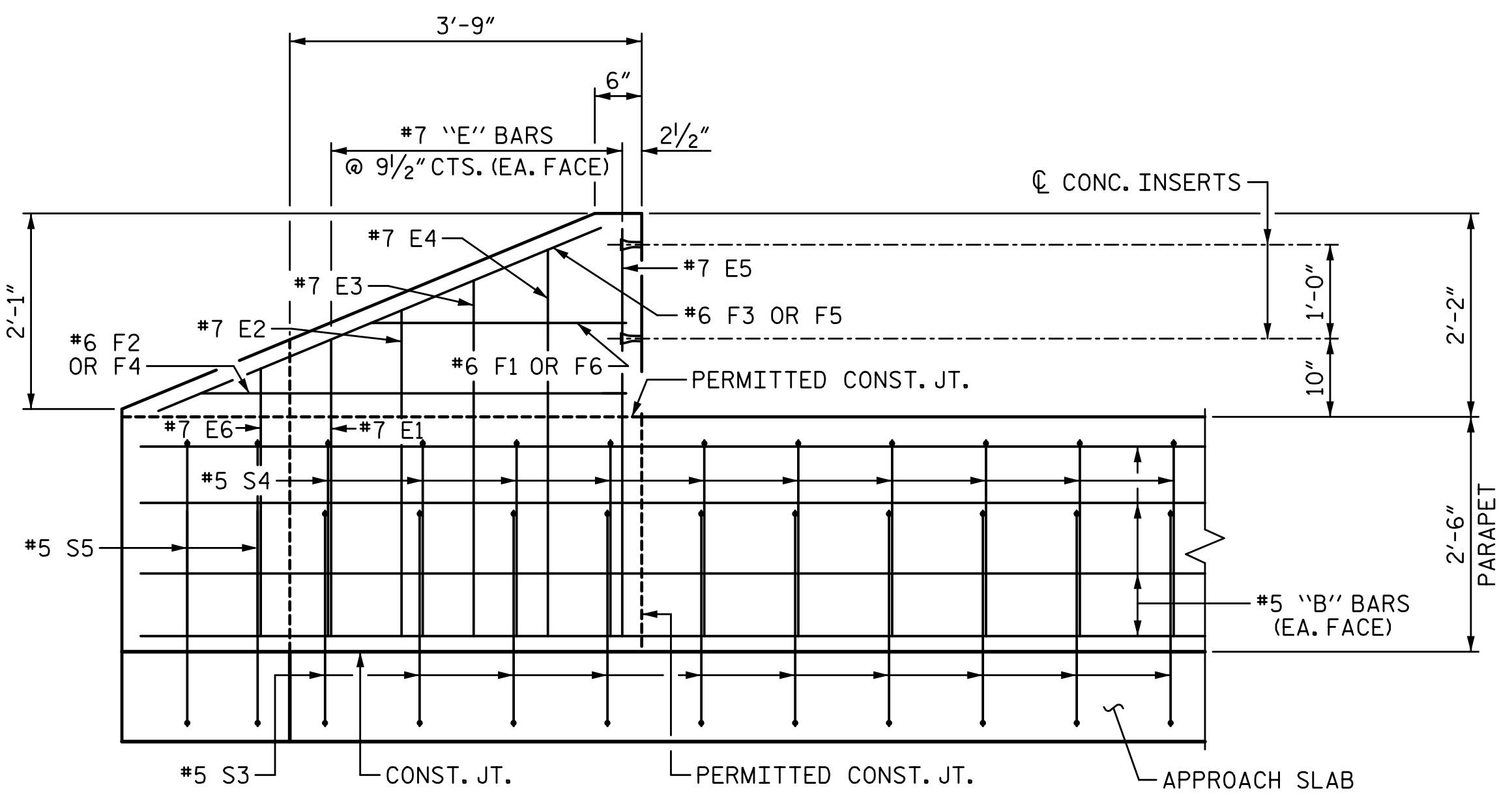
PLAN OF PARAPET @ END BENT 1
END BENT 2 SIMILAR



PLAN OF END POST @ END BENT 1
END BENT 2 SIMILAR



END VIEW



ELEVATION

PARAPET AND END POST FOR TWO BAR METAL RAIL

(1'-4" x 2'-6" PARAPET)

BILL OF MATERIAL

1'-4" X 2'-6" PARAPET AND END POSTS

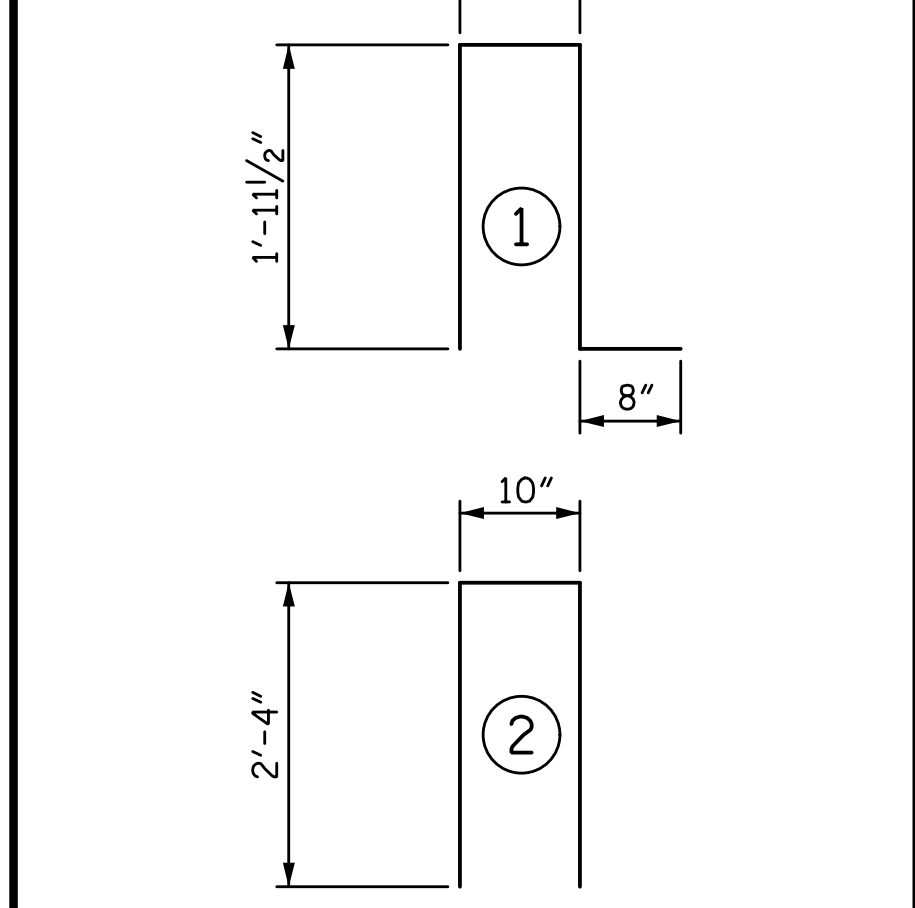
BAR	NO.	SIZE	TYPE	LENGTH	WEIGHT
*B1	16	#5	STR	12'-11"	216
*B2	64	#5	STR	20'-7"	1,374
*B3	16	#5	STR	24'-1"	402
*B4	16	#5	STR	24'-7"	410
*B5	16	#5	STR	14'-8"	245
*E1	4	#7	STR	3'-1"	25
*E2	4	#7	STR	3'-5"	28
*E3	4	#7	STR	3'-9"	31
*E4	4	#7	STR	4'-1"	33
*E5	4	#7	STR	4'-4"	35
*E6	2	#7	STR	2'-10"	12
*F1	2	#6	STR	1'-6"	5
*F2	2	#6	STR	3'-4"	10
*F3	2	#6	STR	3'-10"	12
*F4	2	#6	STR	4'-8"	14
*F5	2	#6	STR	5'-8"	17
*F6	2	#6	STR	2'-9"	8
*S3	307	#5	1	5'-5"	1,734
*S4	307	#5	2	5'-6"	1,761
*S5	12	#5	STR	3'-0"	38

EPOXY COATED REINFORCING STEEL 6,410 LB

CLASS AA CONCRETE 39.0 CY

1'-4" X 2'-6" CONCRETE PARAPET 312.46 LF

BAR TYPES



ALL BAR DIMENSIONS ARE OUT TO OUT
* EPOXY COATED REINFORCING STEEL

PROJECT NO. B-5869
BURKE COUNTY
STATION: 21+62.39 -L-

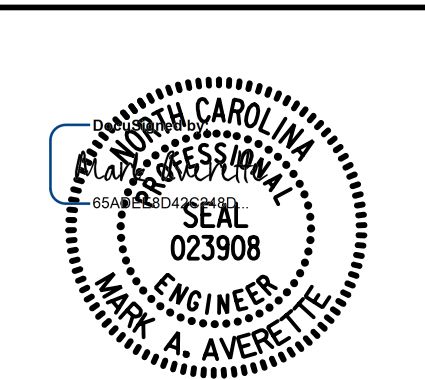
SHEET 2 OF 3

STATE OF NORTH CAROLINA
DEPARTMENT OF TRANSPORTATION
RALEIGH
SUPERSTRUCTURE
CONCRETE PARAPET DETAILS
STAGE II

REVISIONS				SHEET NO.	
NO.	BY:	DATE:	NO.	BY:	DATE:
1			3		
2			4		

TOTAL SHEETS 72

DRAWN BY: S.D. COOPER DATE: 3-2022
CHECKED BY: M. AVERETTE DATE: 3-2022
DESIGN ENGINEER OF RECORD: M. AVERETTE DATE: 3-2022



DOCUMENT NOT CONSIDERED FINAL UNLESS ALL SIGNATURES COMPLETED