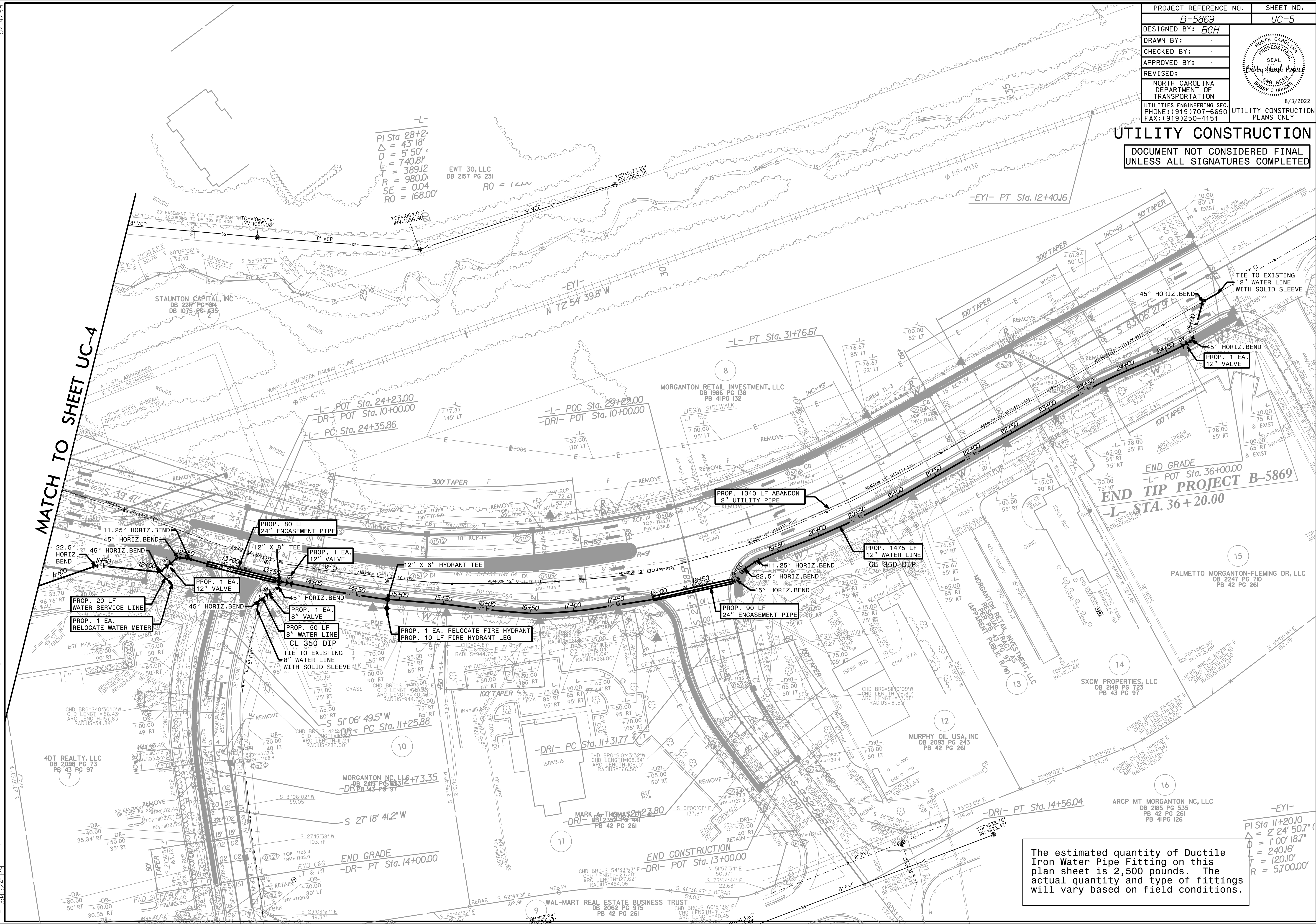


5/14/99

PROJECT REFERENCE NO.	B-5869	SHEET NO.	UC-5
DESIGNED BY:	BCH		UTILITY CONSTRUCTION PLANS ONLY
DRAWN BY:			
CHECKED BY:			
APPROVED BY:			
REVISED:			
NORTH CAROLINA DEPARTMENT OF TRANSPORTATION			
UTILITIES ENGINEERING SEC. PHONE: (919) 707-6690 FAX: (919) 250-4151			

UTILITY CONSTRUCTION
DOCUMENT NOT CONSIDERED FINAL
UNLESS ALL SIGNATURES COMPLETED



MATCH TO SHEET UC-4

END GRADE
-L- POT Sta. 36+00.00
END TIP PROJECT B-5869
-L- STA. 36+20.00

The estimated quantity of Ductile Iron Water Pipe Fitting on this plan sheet is 2,500 pounds. The actual quantity and type of fittings will vary based on field conditions.

-EYI-
PI Sta 11+20.0
Δ = 2' 24" 50.7'
Δ = 1' 00" 18.7'
L = 240.16'
T = 120.10'
R = 5700.00'

5/31/2022 (Pro.)\B5869-Ut-(r.dly.sht5).UC(ut).const.Sht(5).psh.dgn
3:01:29 PM