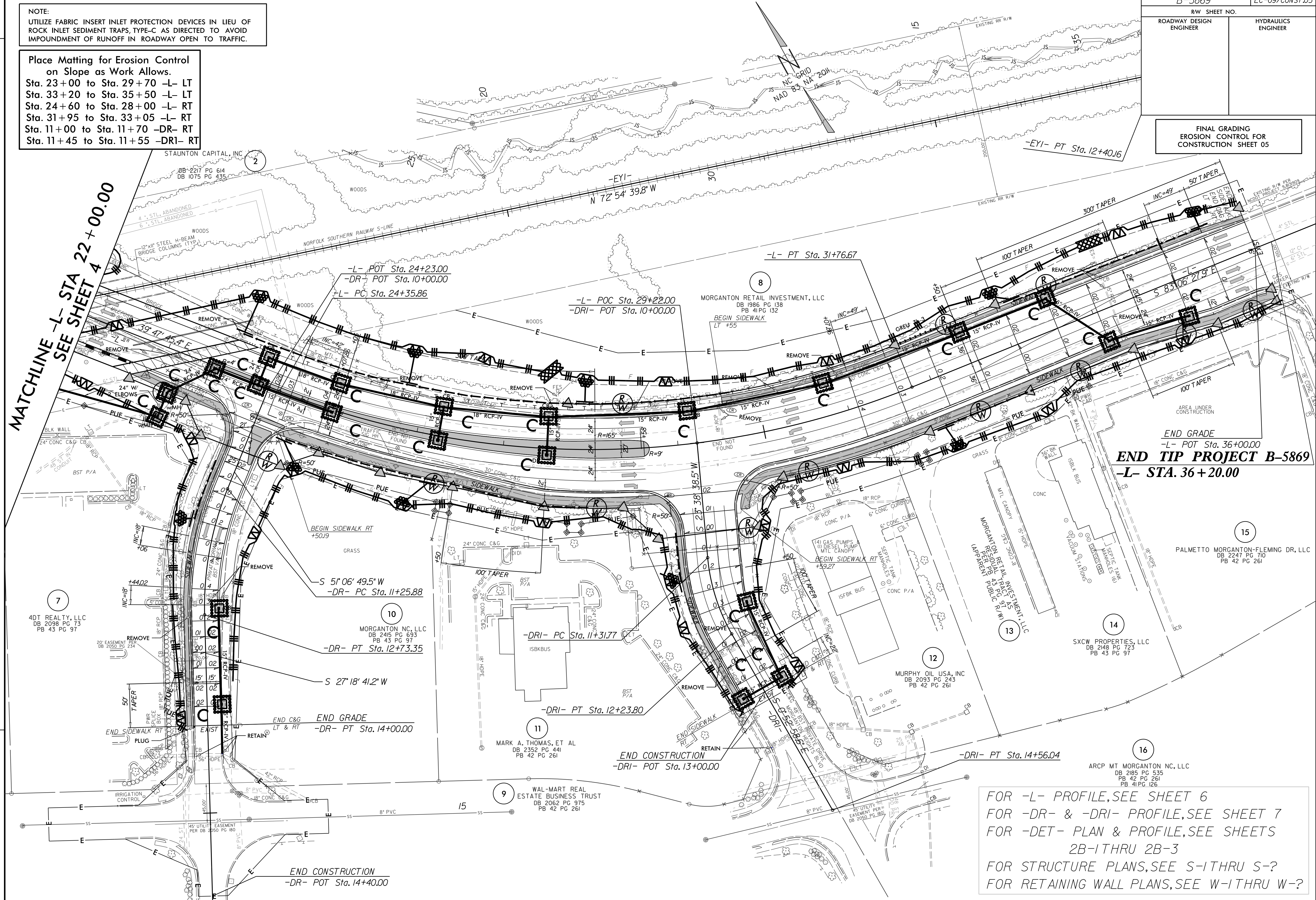


NOTE:
UTILIZE FABRIC INSERT INLET PROTECTION DEVICES IN LIEU OF
ROCK INLET SEDIMENT TRAPS, TYPE-C AS DIRECTED TO AVOID
IMPOUNDMENT OF RUNOFF IN ROADWAY OPEN TO TRAFFIC.

Place Matting for Erosion Control
on Slope as Work Allows.
Sta. 23+00 to Sta. 29+70 -L- LT
Sta. 33+20 to Sta. 35+50 -L- LT
Sta. 24+60 to Sta. 28+00 -L- RT
Sta. 31+95 to Sta. 33+05 -L- RT
Sta. 11+00 to Sta. 11+70 -DR- RT
Sta. 11+45 to Sta. 11+55 -DRI- RT

REVISIONS
ROW REVISION: 12/16/2021; MDPJ -DR- CONVERTED TO RIGHT IN ONLY. PARCELS 7.9 & 10. EASEMENTS ADDED FOR PROPOSED MARKING AND SIGNING REVISIONS.

MATCHLINE -L- STA 22+00.00
SEE SHEET 4



END GRADE
-L- POT Sta. 36+00.00
END TIP PROJECT B-5869
-L- STA. 36+20.00

FOR -L- PROFILE, SEE SHEET 6
FOR -DR- & -DRI- PROFILE, SEE SHEET 7
FOR -DET- PLAN & PROFILE, SEE SHEETS
2B-1 THRU 2B-3
FOR STRUCTURE PLANS, SEE S-1 THRU S-?
FOR RETAINING WALL PLANS, SEE W-1 THRU W-?